



Structure ID: HW-1

P1 HWSFBIO30

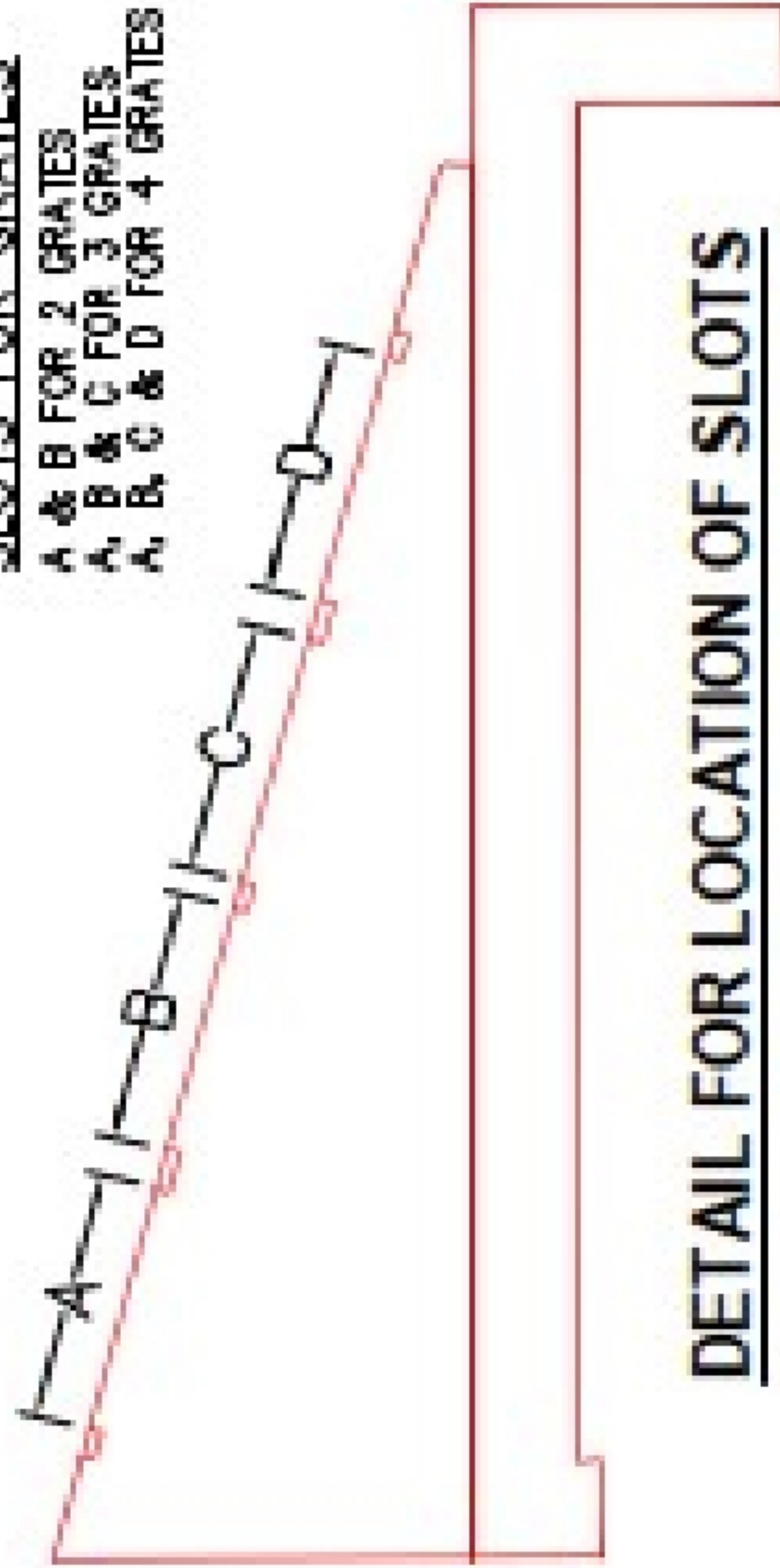
30" - SLOPED & FLARED BOX I/O F/F

NOTES:

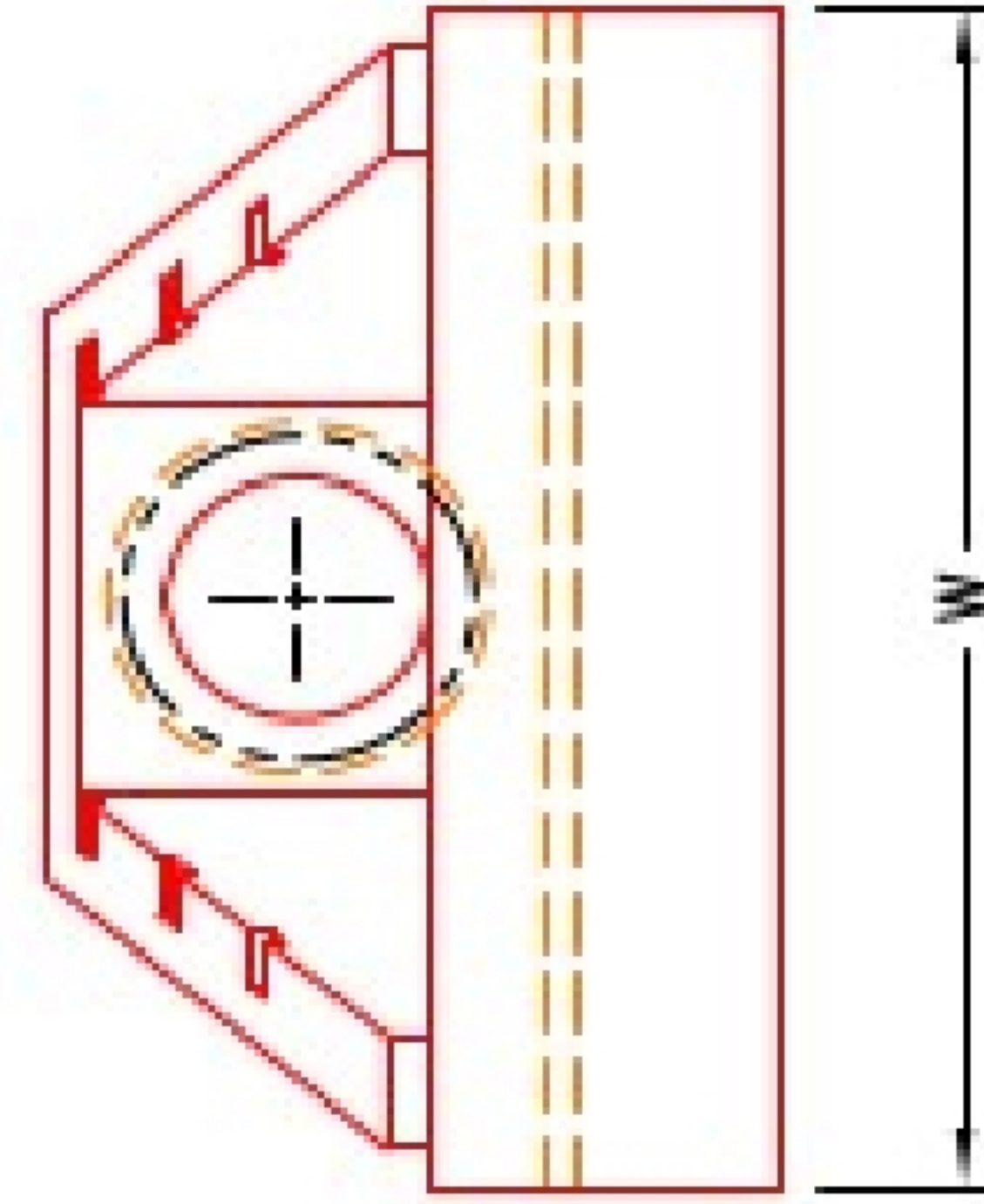
1. CONCRETE: KYTC APPROVED.
2. REINFORCING: #5 BAR @ 12" C/C E.W. - GRADE 60, (WITH 2" CONCRETE COVER MINIMUM)
3. REINFORCING BARS TO BE TACK WELDED OR TIED.
4. PIPE AND LIFTING ANCHOR POCKETS TO BE GROUTED WITH KYTC APPROVED NON-SHRINK GROUT.
5. DRAWING TO BE USED IN CONJUNCTION WITH KYTC STD. DRAWINGS RDB-105-08 & RDB-106-05 AND THE STANDARD SPECIFICATIONS FOR ROAD AND BRIDGE CONSTRUCTION.
6. 7" CHAMFER ON ALL EXPOSED EDGES.
7. PERFORMED STEPPED HOLE SIZED AS PER O.D. OF PIPE + 3"-4".

SLOTS FOR GRATES

- A & B FOR 2 GRATES
- A, B & C FOR 3 GRATES
- A, B, C & D FOR 4 GRATES

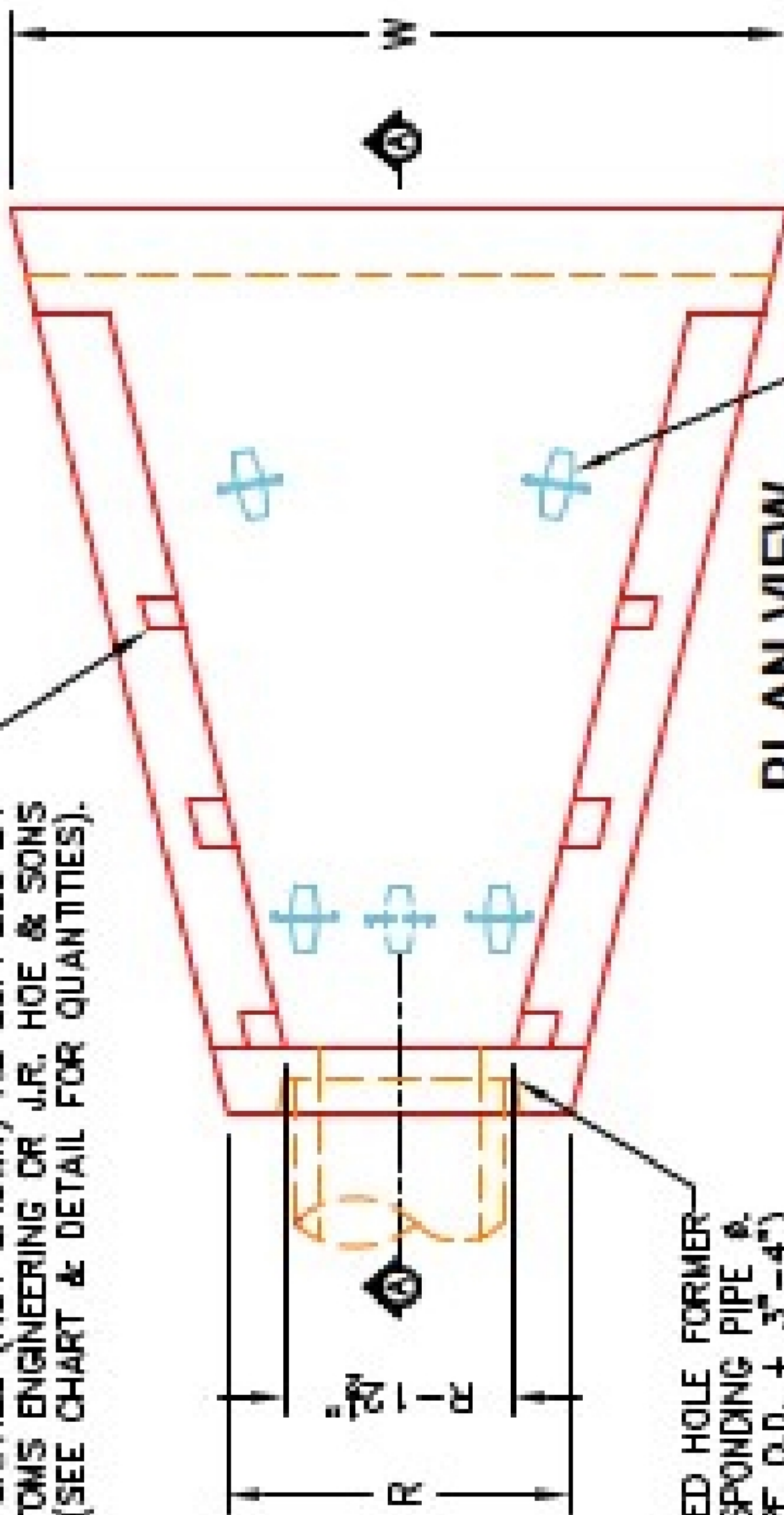


DETAIL FOR LOCATION OF SLOTS



FRONT ELEVATION

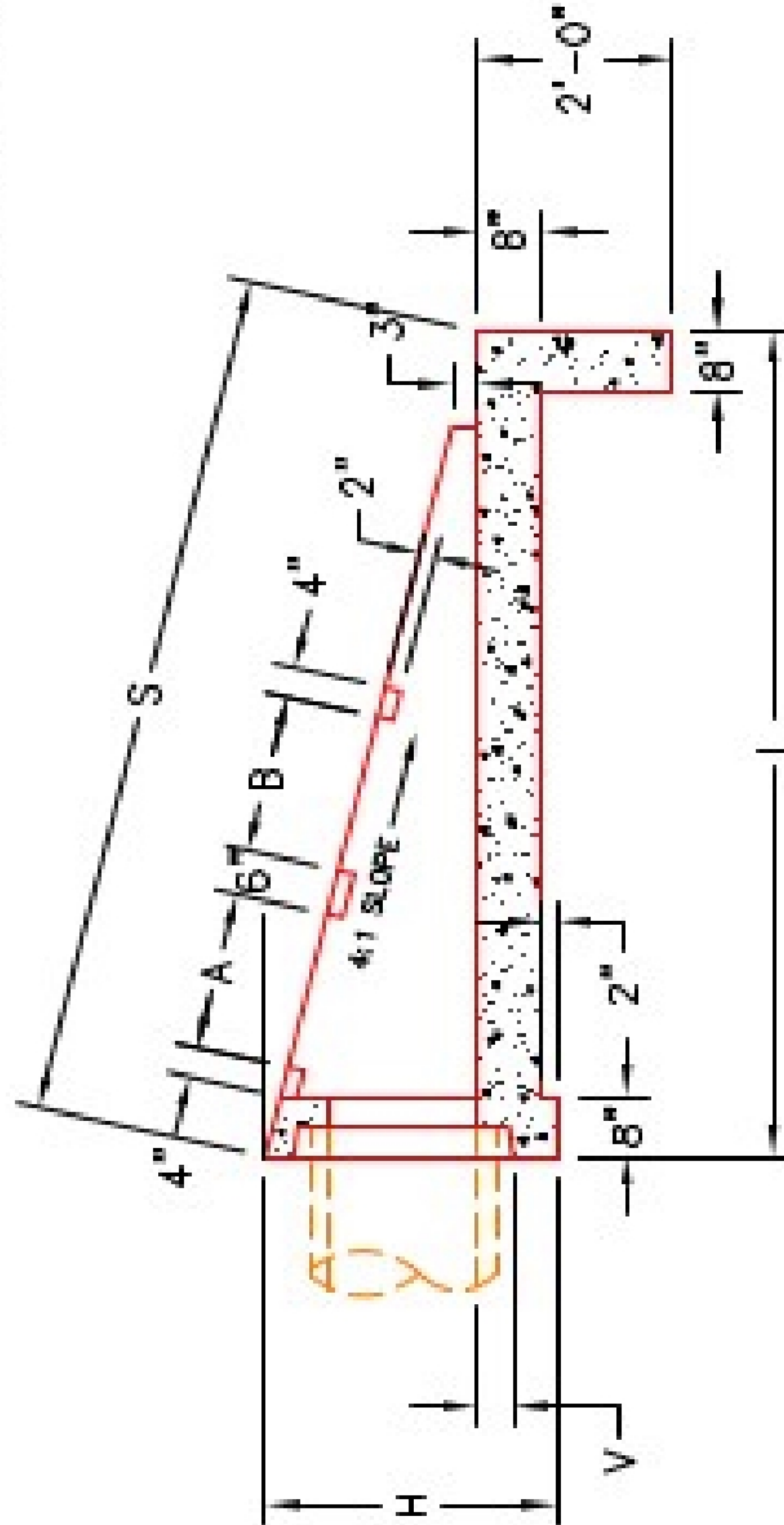
SLOTS AS REQUIRED FOR STRUCTURAL STEEL GRATES (NOT SHOWN) AS SUPPLIED BY BOTTOMS ENGINEERING OR J.R. HOE & SONS (SEE CHART & DETAIL FOR QUANTITIES).



PLAN VIEW

STEPPED HOLE FORMER FOR CORRESPONDING PIPE Ø. (PIPE O.D. + 3"-4")

"A"-ANCHOR LIFTING SYSTEM FOR PLANT & FIELD HANDLING. (SEE CHART FOR TYPE & QTY.)



SECTION A-A

DIMENSIONS

PIPE Ø	H	L	S	R	V	W	A	B	C	D	NO. GRATES		CONCRETE YD.	LBS. #4 BAR	LIFTING ANCHORS
											2'	3'			
15"	30"	102"	105 1/2"	35 1/2"	4"	87"	21"	21"	--	--	2 EA.	--	1.8	81	3 EA. CONAC 6041B
18"	36"	102"	105 1/2"	35 1/2"	4"	87"	21"	21"	--	--	2 EA.	--	1.8	81	3 EA. CONAC 6041B
24"	48"	138"	138"	48 1/2"	5"	107"	30"	30"	--	--	2 EA.	2 EA.	2.7	111	4 EA. CONAC 6041B
30"	60"	154"	154 1/2"	48 1/2"	6"	127"	30"	30"	21"	21"	1 EA.	2 EA.	3.8	148	4 EA. CONAC 6041B
36"	72"	180"	180 1/2"	54 1/2"	6"	147"	30"	30"	21"	21"	2 EA.	2 EA.	5.1	187	4 EA. CONAC 6041B



INFRASTRUCTURE PRECAST, INC.
 981 WEST 7TH ST., BEAVER DAM, KY, 42320
 PHONE: (270) 363-2238, FAX: (270) 298-7424

KYTC 15"-36" SLOPED & FLARED
 BOX INLET-OUTLET HEADWALL (NO SKEW)

DRAWING NO.: ET-KYTC-124
 DATE: 01-14-25
 REVIEWED BY: J.H. ROSS, PE
 DRAWN BY: H. RICHARDS
 WEB: WWW.IPCASTING.COM
 SCALE: NTS