

Job Name: 25-3462 - Corvette Museum Material
 Job Location: Bowling Green, KY
 Contractor: National Corvette Museum c/o Scotty's Contracting

Plant: 100
 12/8/2025 3:15:56 PM

Tech: J. Horsley - F
 PC: C. Goff



Structure ID: DI-6

P2 MH048LD12-24SQ

MH FLAT TOP w/24"x24" Hole F/G

- P4) 24" x 24" - CASTING HEIGHT - 2"
- P3) 24" x 24" - GRADE RING F/F - 3"
- P2) 48" - MH FLAT TOP w/24"x24" Hole F/G - 12"
- P1) 48" - MH BASE T/n - 36"
- 1) CASTING - JBS 4190-L F/G
- 1) 48" - Conseal CS-102 1.00"
- 2) 24" x 24" - Conseal CS-102 1.00"
- 2) Hole - 26

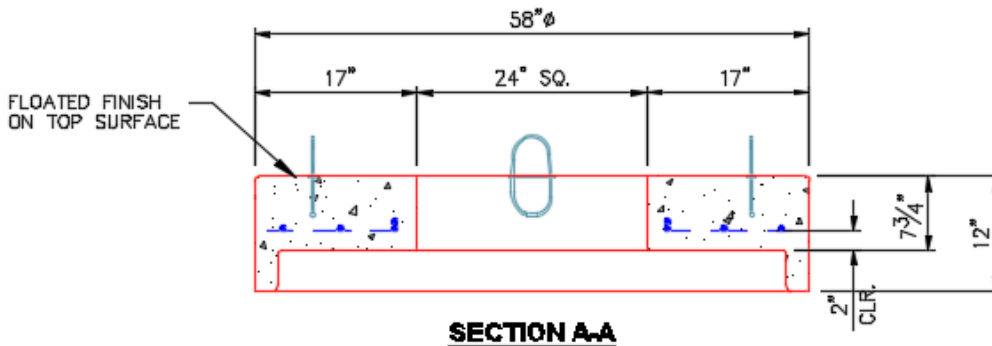
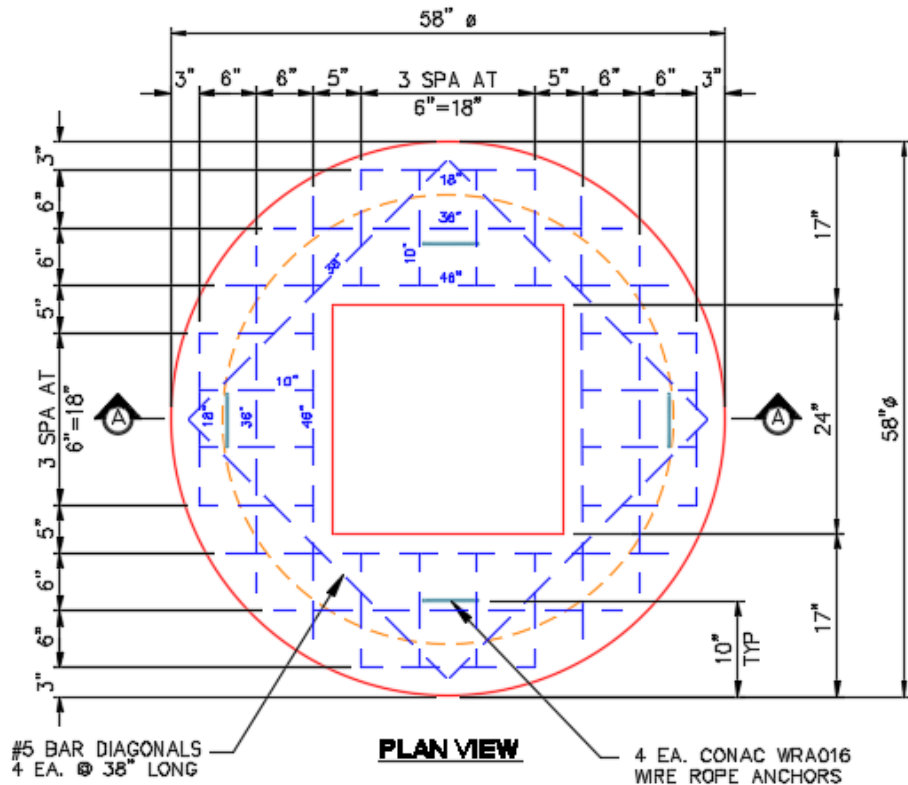
0 lb
 258 lb
 1500 lb
 3482 lb
 335 lb
 0 lb
 0 lb
 0 lb
 0 lb

 Structure Total: 5574 lb

Structure Notes:

1. PER ASTM C478 SPECIFICATIONS.
2. CONCRETE = 4,000 PSI AT 28 DAYS.
3. NO STEPS AND NO INVERT CHANNEL.
4. CASTING BY I-CAST (JBS 4190-L F/G).

REINFORCING PER ASTM A615 (GRADE 60).
 - TOP SLAB (As .62) #5 BARS AT 6" C.C.E.W..
 - RISER/WALLS (As .12)
 - FLOOR (As .31) #5 BARS AT 12" C.C.E.W.



- #5 BAR CUT LIST**
- 4 EA. @ 46"
 - 4 EA. @ 36"
 - 4 EA. @ 18"
 - 4 EA. @ 38"
 - 12 EA. @ 12"

Coating (Int):
 Coating (Ext):

Seam Up: Flat
 Seam Dn: Groove

Wall Thickness: 5"

Height (Ext): 12"

Weight (Net): 1500 lb
 Volume (Net): 0.37cu.yd