

Job Name: 25-3462 - Corvette Museum Material
 Job Location: Bowling Green, KY
 Contractor: National Corvette Museum c/o Scotty's Contracting

Plant: 100
 12/8/2025 3:15:57 PM

Tech: J. Horsley - F
 PC: C. Goff



Structure ID: DI-5

P2 MH060LD13-24SQ

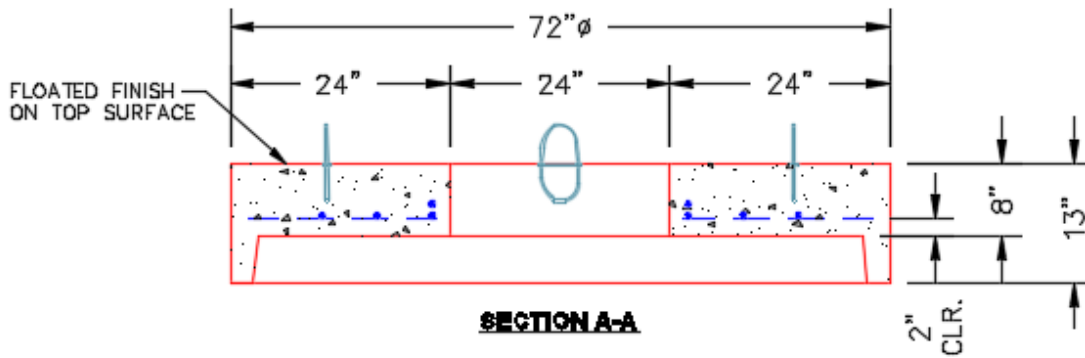
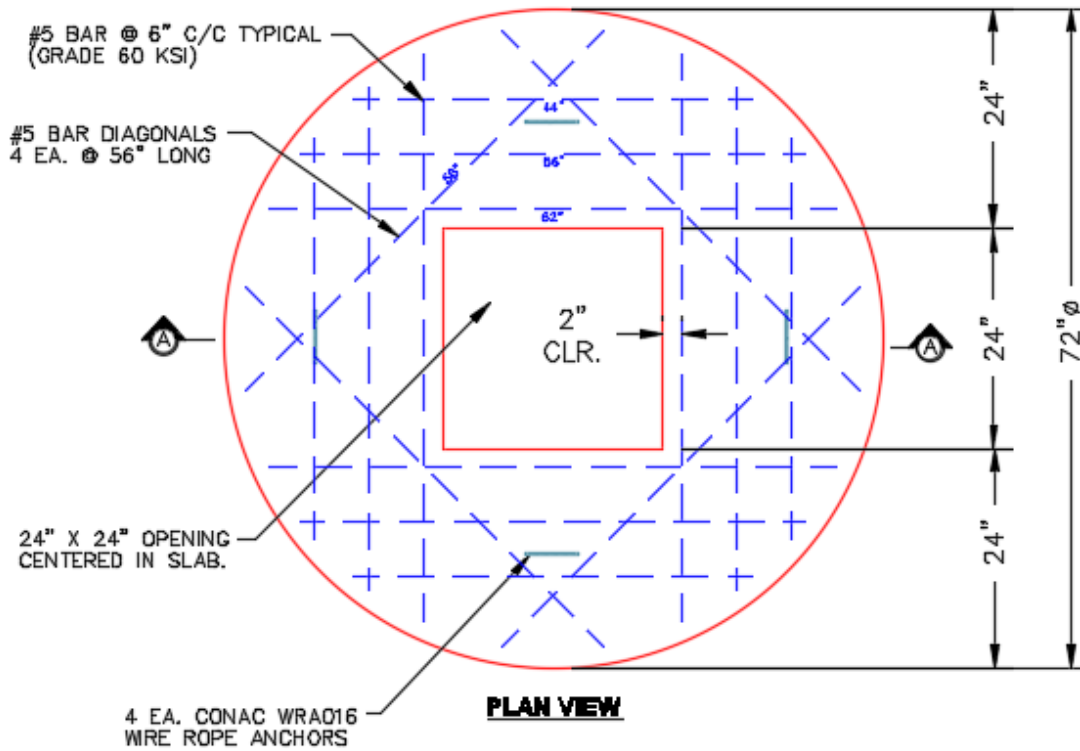
MH FLAT TOP w/24"x24" Hole F/G

- P3) 24" x 24" - CASTING HEIGHT - 2"
- P2) 60" - MH FLAT TOP w/24"x24" Hole F/G - 13"
- P1) 60" - MH BASE Custom Ht T/n - 52"
- 1) CASTING - JBS 4190-L F/G
- 1) 60" - Conseal CS-102 1.00"
- 1) 24" x 24" - Conseal CS-102 1.00"
- 1) Hole - 40
- 1) Hole - 24
- 1) Hole - 26
- 4) MH Step ML-10-TDS-NCR - 10"

	0 lb
	2619 lb
	6972 lb
	335 lb
	0 lb
	0 lb
	0 lb
	0 lb
	0 lb
	0 lb
Structure Total:	9926 lb

Structure Notes:
 1. PER ASTM C478 SPECIFICATIONS.
 2. CONCRETE = 4,000 PSI AT 28 DAYS.
 3. NO INVERT CHANNEL.
 4. CASTING BY I-CAST (JBS 4190-L F/G).

REINFORCING PER ASTM A615 (GRADE 60).
 - TOP SLAB (As .62) #5 BARS AT 6" C.C.E.W..
 - RISER/WALLS (As .18)
 - FLOOR (As .37) #5 BARS AT 10" C.C.E.W.



- #5 BAR CUT LIST**
- 4 EA. @ 62"
 - 8 EA. @ 56"
 - 4 EA. @ 44"

Coating (Int): Coating (Ext):	Seam Up: Flat Seam Dn: Groove	Wall Thickness: 6"	Height (Ext): 13"	Weight (Net): 2619 lb Volume (Net): 0.67cu.yd
----------------------------------	----------------------------------	--------------------	-------------------	--