

Job Name: 25-3462 - Corvette Museum Material  
 Job Location: Bowling Green, KY  
 Contractor: National Corvette Museum c/o Scotty's Contracting

Plant: 100  
 12/8/2025 3:15:56 PM

Tech: J. Horsley - F  
 PC: C. Goff



**Structure ID: DI-2**

**P2 MH060LD08-24SQ**

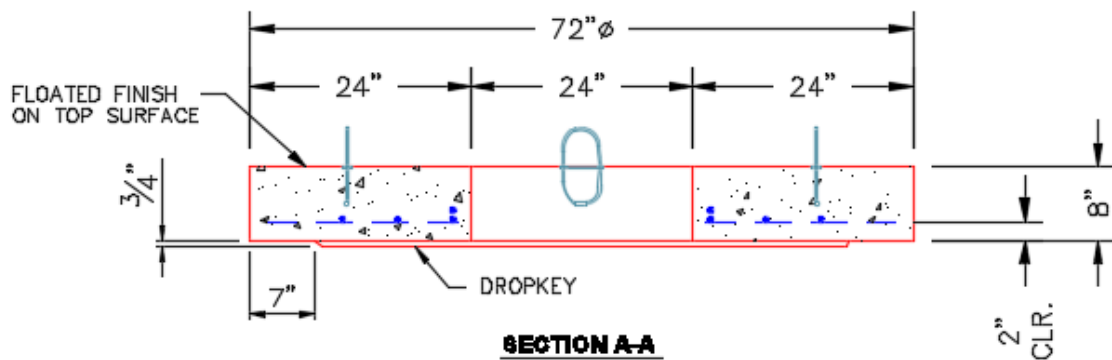
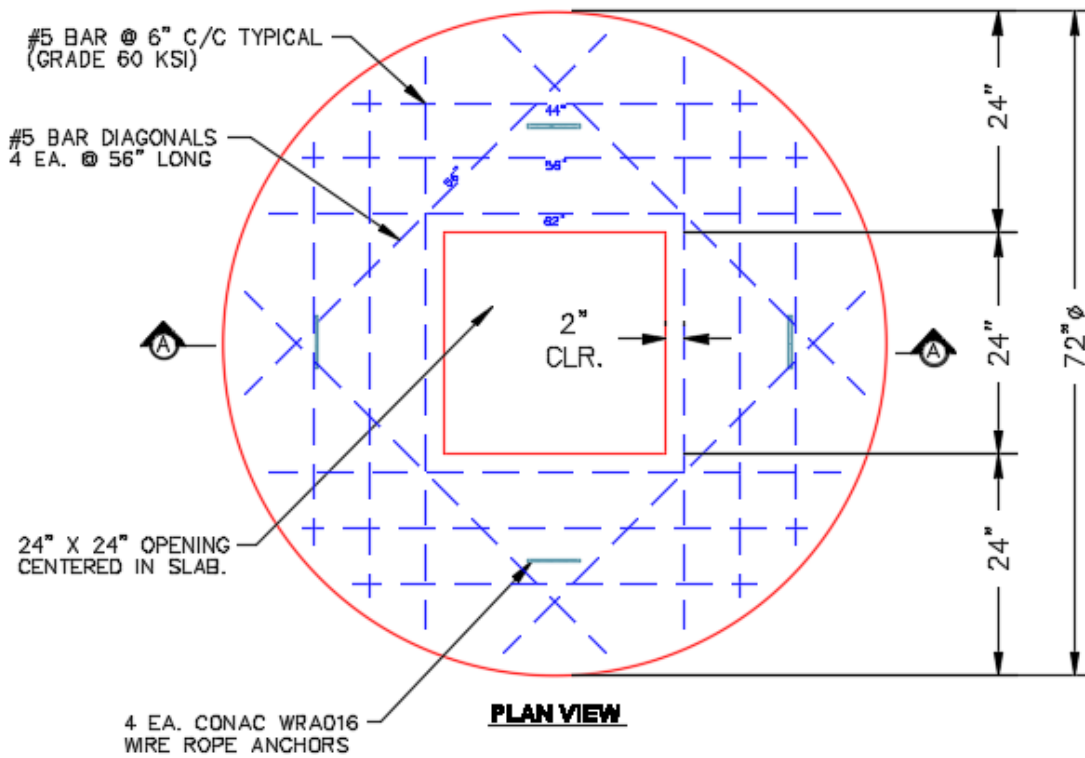
**MH FLAT TOP w/24"x24" Hole F/F**

- P3) 24" x 24" - CASTING HEIGHT - 2"
- P2) 60" - MH FLAT TOP w/24"x24" Hole F/F - 8"
- P1) 60" - MH BASE Custom Ht F/n - 38"
- 1) CASTING - JBS 4190-L F/G
- 1) 60" - Conseal CS-102 1.00"
- 1) 24" x 24" - Conseal CS-102 1.00"
- 1) DOGHOUSE INVRTD - 40"x41.50"
- 1) DOGHOUSE INVRTD - 40"x39"
- 3) MH Step ML-10-TDS-NCR - 10"

0 lb  
 2347 lb  
 5139 lb  
 335 lb  
 0 lb  
 0 lb  
 0 lb  
 0 lb  
 0 lb  
 0 lb  
 -----  
 Structure Total: 7820 lb

**Structure Notes:**  
 1. PER ASTM C478 SPECIFICATIONS.  
 2. CONCRETE = 4,000 PSI AT 28 DAYS.  
 3. NO INVERT CHANNEL.  
 4. CASTING BY I-CAST (JBS 4190-L F/G).

REINFORCING PER ASTM A615 (GRADE 60).  
 - TOP SLAB (As .62) #5 BARS AT 6" C.C.E.W..  
 - RISER/WALLS (As .18)  
 - FLOOR (As .37) #5 BARS AT 10" C.C.E.W.



- #5 BAR CUT LIST**
- 4 EA. @ 62"
  - 8 EA. @ 56"
  - 4 EA. @ 44"

Coating (Int): Coating (Ext):	Seam Up: Flat Seam Dn: Flat	Wall Thickness: 6"	Height (Ext): 8"	Weight (Net): 2347 lb Volume (Net): 0.6cu.yd
----------------------------------	--------------------------------	--------------------	------------------	---