

Job Name: 25-3459 Raceland MOB  
 Job Location: Raceland, KY  
 Contractor: Allard Excavation, LLC.

Plant: 100

11/25/2025 3:43:53 PM

Tech: J. Horsley-A

PC: Erica Bradley



**Structure ID: 220**

**P2 BX2436-08LD08-SP**

**BX FLAT LID 8inW w/24"x24" HOLE F/F**

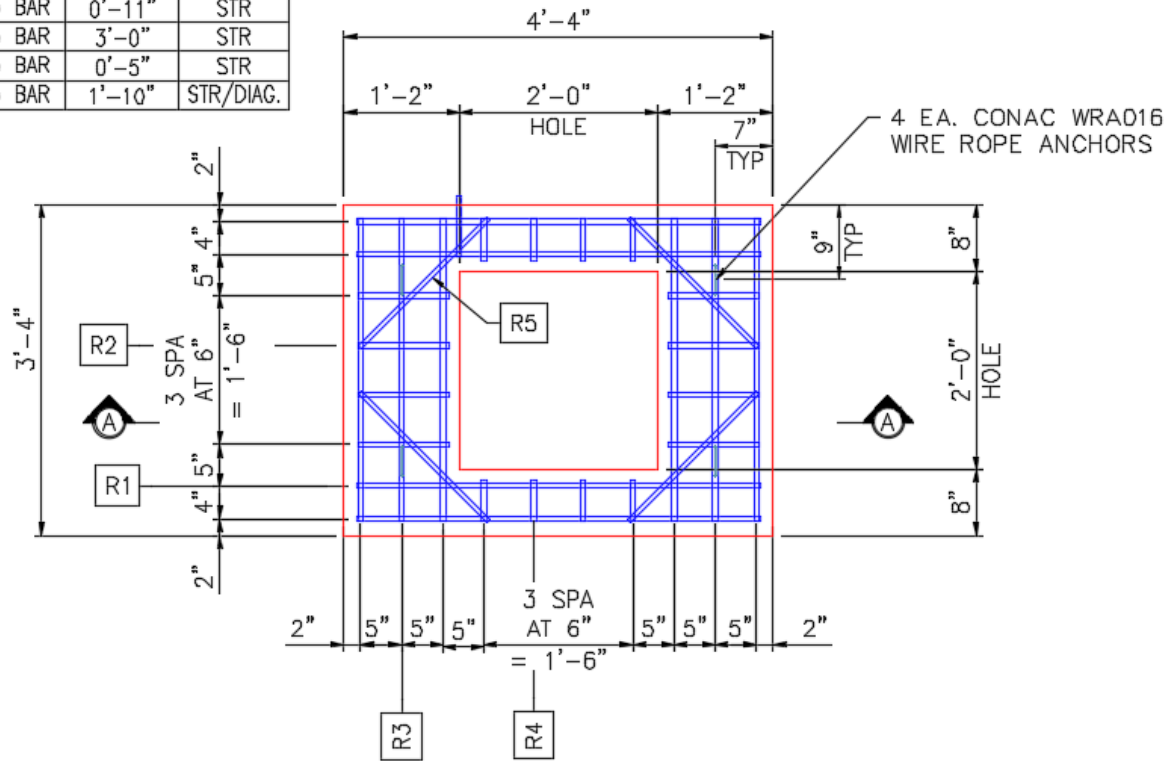
- P3) 24" x 24" - CASTING HEIGHT - 5"
- P2) 24" x 36" - BX FLAT LID 8inW w/24"x24" HOLE F/F - 8"
- P1) 24" x 36" - BOX BASE 8inW, 8inF, Variable Ht F/n - 30"
- 1) CASTING - HOE KY-465 SET (CBI TY F)
- 1) 24" x 36" - Conseal CS-102 1.00"
- 1) 24" x 24" - Conseal CS-102 1.00"
- 2) Hole - 20
- 2) Hole - 6

0 lb  
 1010 lb  
 3965 lb  
 465 lb  
 0 lb  
 0 lb  
 0 lb  
 0 lb  
 0 lb  
 Structure Total: 5440 lb

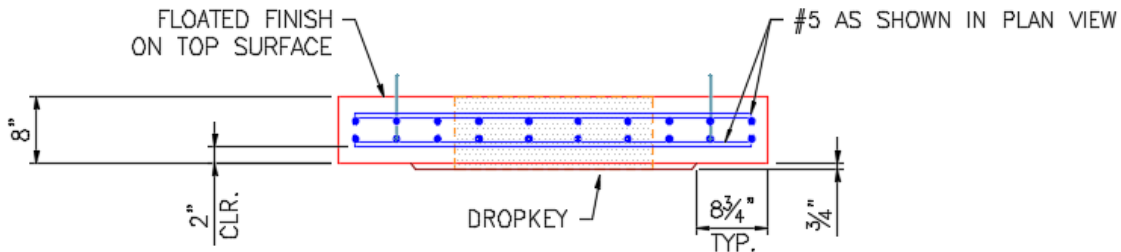
Structure Notes:

1. CASTING: HOE KY-465 SET (CBI TY F) PROVIDED BY ICAST.
  2. KYTC CBI TYPE F / ASTM C913 SPECIFICATIONS.
  3. CONCRETE = 4,000 PSI AT 28 DAYS.
  4. NO INVERT CHANNEL.
  5. NO STEPS.
- REINFORCING PER ASTM A615 (GRADE 60).  
 - TRANS. SLAB (As .62) #5 BARS AT 6" C.C.E.W (DBL MAT)  
 - WALLS (As .31) #5 BARS AT 12" C.C.E.W.  
 - FLOOR (As .31) #5 BARS AT 12" C.C.E.W.

REINFORCEMENT CUT LIST				
BAR	QTY	MATERIAL	LENGTH	SHAPE
R1	8	#5 BAR	4'-0"	STR
R2	16	#5 BAR	0'-11"	STR
R3	12	#5 BAR	3'-0"	STR
R4	16	#5 BAR	0'-5"	STR
R5	8	#5 BAR	1'-10"	STR/DIAG.



**PLAN VIEW**



**SECTION "A-A"**

Coating (Int):  
 Coating (Ext):

Seam Up: Flat  
 Seam Dn: Flat

Wall Thickness: 8"

Height (Ext): 8"

Weight (Net): 1010 lb  
 Volume (Net): 0.26cu.yd