

Structure ID: 220

P1 BX2436-08BVF

BOX BASE 8inW, 8inF, Variable Ht F/n

P3) 24" x 24" - CASTING HEIGHT - 5" 0 lb P2) 24" x 36" - BX FLAT LID 8inW w/24"x24" HOLE F/F - 8" 1010 lb P1) 24" x 36" - BOX BASE 8inW, 8inF, Variable Ht F/n - 30" 3965 lb 1) CASTING - HOE KY-465 SET (CBI TY F) 465 lb 1) 24" x 36" - Conseal CS-102 1.00" 0 lb 1) 24" x 24" - Conseal CS-102 1.00" 0 lb 2) Hole - 20 0 lb 2) Hole - 6 0 lb	Structure Total:	5440 lb
--	------------------	---------

Structure Notes:

1. CASTING: HOE KY-465 SET (CBI TY F) PROVIDED BY ICAST.
2. KYTC CBI TYPE F / ASTM C913 SPECIFICATIONS.
3. CONCRETE = 4,000 PSI AT 28 DAYS.
4. NO INVERT CHANNEL.
5. NO STEPS.

REINFORCING PER ASTM A615 (GRADE 60).

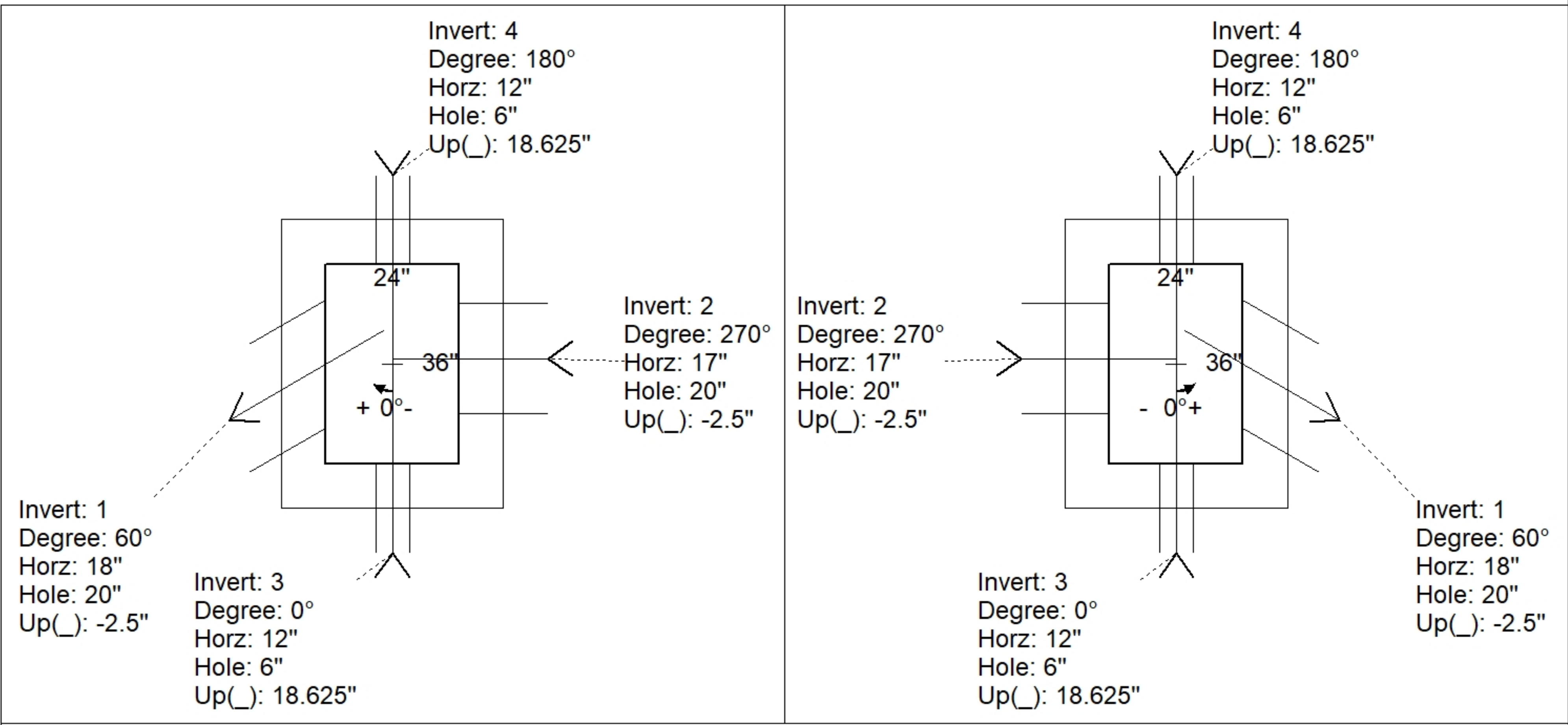
- TRANS. SLAB (As .62) #5 BARS AT 6" C.C.E.W (DBL MAT)
- WALLS (As .31) #5 BARS AT 12" C.C.E.W.
- FLOOR (As .31) #5 BARS AT 12" C.C.E.W.

Rim: 582.38' Rim to Invert: 3.62' Slack: 0.44" Sump: 0" Step Position:

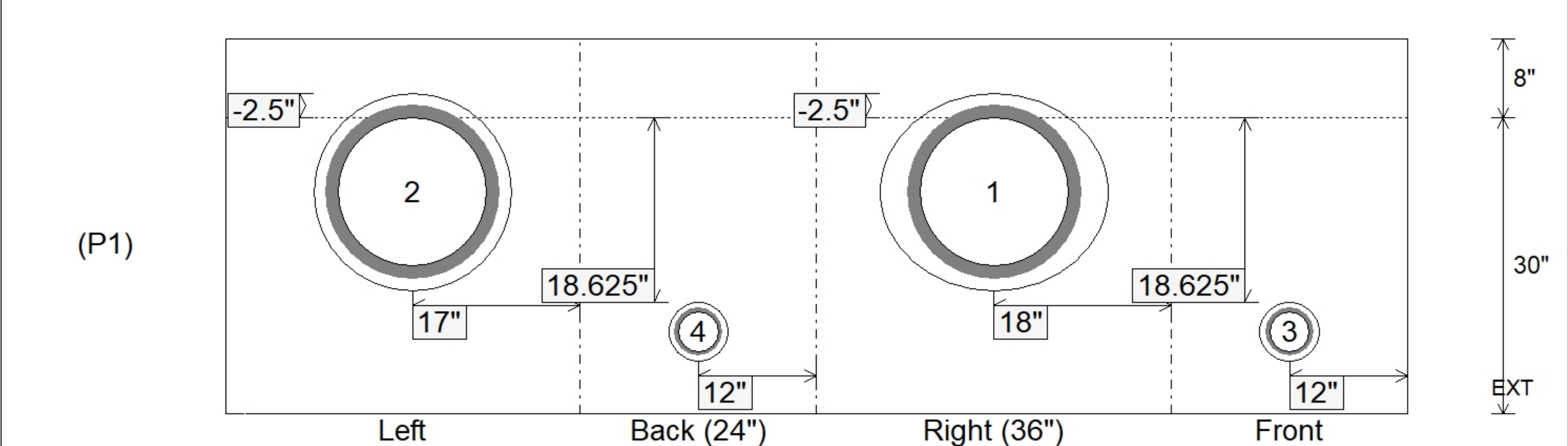
Position	Elev	Angle	Ext. (cw)	Pipe	Pipe OD	Connector	Hole	Horz Size	Up ()	Offset
Invert 1	578.76'	60°	21.375"	15" HDPE	17.6"	Hole 20	20"	23.094"	-2.5"	6"
Invert 2	578.76'	270°	25"	15" HDPE	17.6"	Hole 20	20"	20"	-2.5"	-1"
Invert 3	580.4'	0°	20"	4" HDPE	4.8"	Hole 6	6"	6"	18.625"	0"
Invert 4	580.4'	180°	20"	4" HDPE	4.8"	Hole 6	6"	6"	18.625"	0"
Invert 5										
Invert 6										
Invert 7										
Invert 8										

RIGHT-SIDE UP VIEW (int. dimensions)

UPSIDE-DOWN VIEW (int. dimensions)



INSIDE WALL DIMENSIONS



Coating (Int): Coating (Ext):	Seam Up: Flat Seam Dn: n/a	Wall Thickness: 8" Floor Height: 8"	Height (Int): 30" Height (Ext): 38"	Weight (Net): 3965 lb Volume (Net): 1.01cu.yd
----------------------------------	-------------------------------	--	--	--