

Structure ID: 110

P1 BX24300808VF

BOX BASE 8inW, 8inF, Variable Ht T/n

P3) 24" x 30" - CASTING HEIGHT - 3.75" P2) 24" x 30" - BOX RISER 8inW, Variable Ht F/G - 23" P1) 24" x 30" - BOX BASE 8inW, 8inF, Variable Ht T/n - 46" 1) CASTING - HOE KY-460-11 F/G (DBI 11) 2) 24" x 30" - Conseal CS-102 1.00" 1) Hole - 20 1) Hole - 8 1) Weir n/n - 24"x7" 1) Weir n/n - 30"x6"	0 lb 1987 lb 5314 lb 421 lb 0 lb 0 lb 0 lb 0 lb 0 lb 0 lb 0 lb ----- Structure Total: 7722 lb
--	---

Structure Notes:

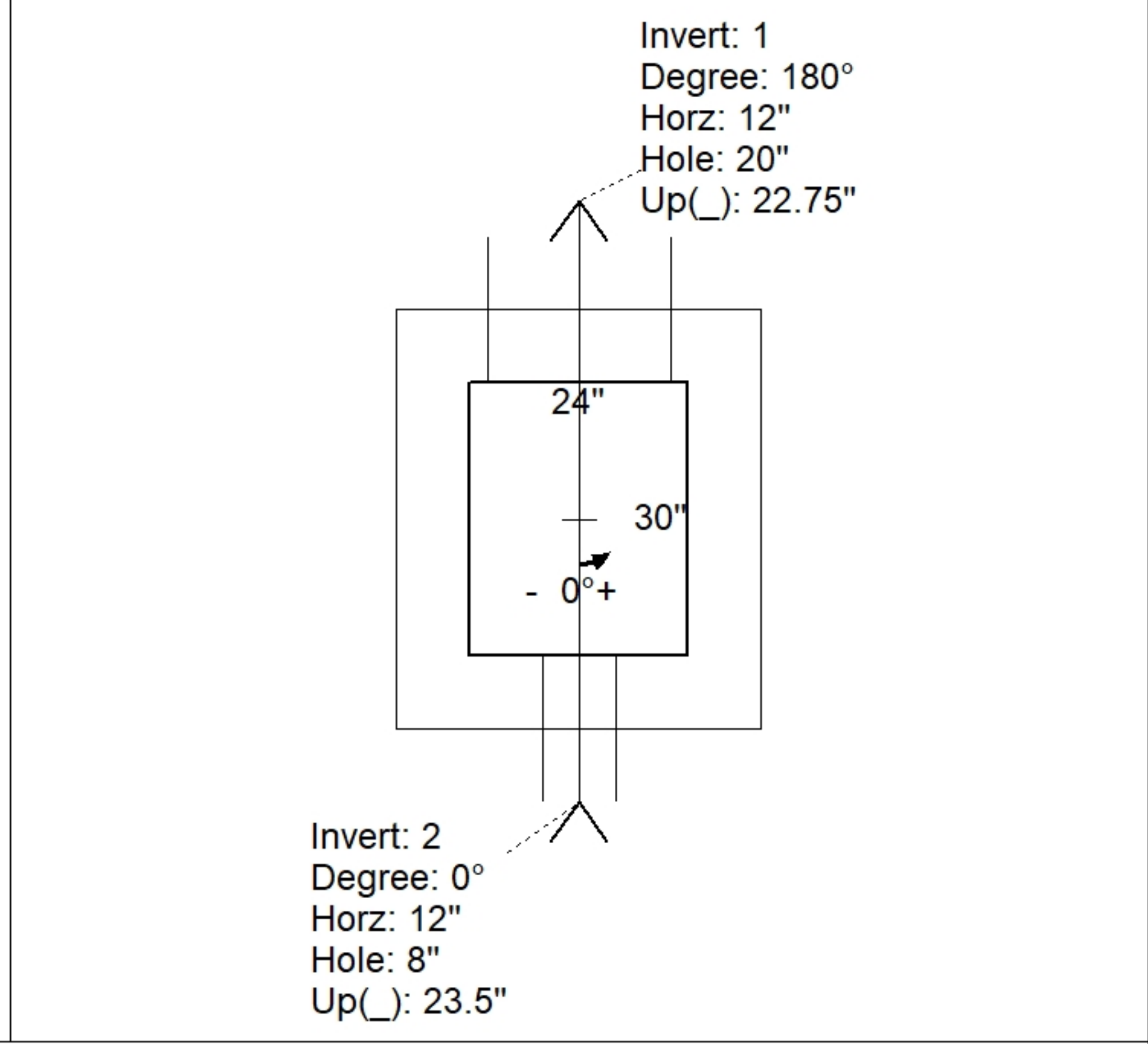
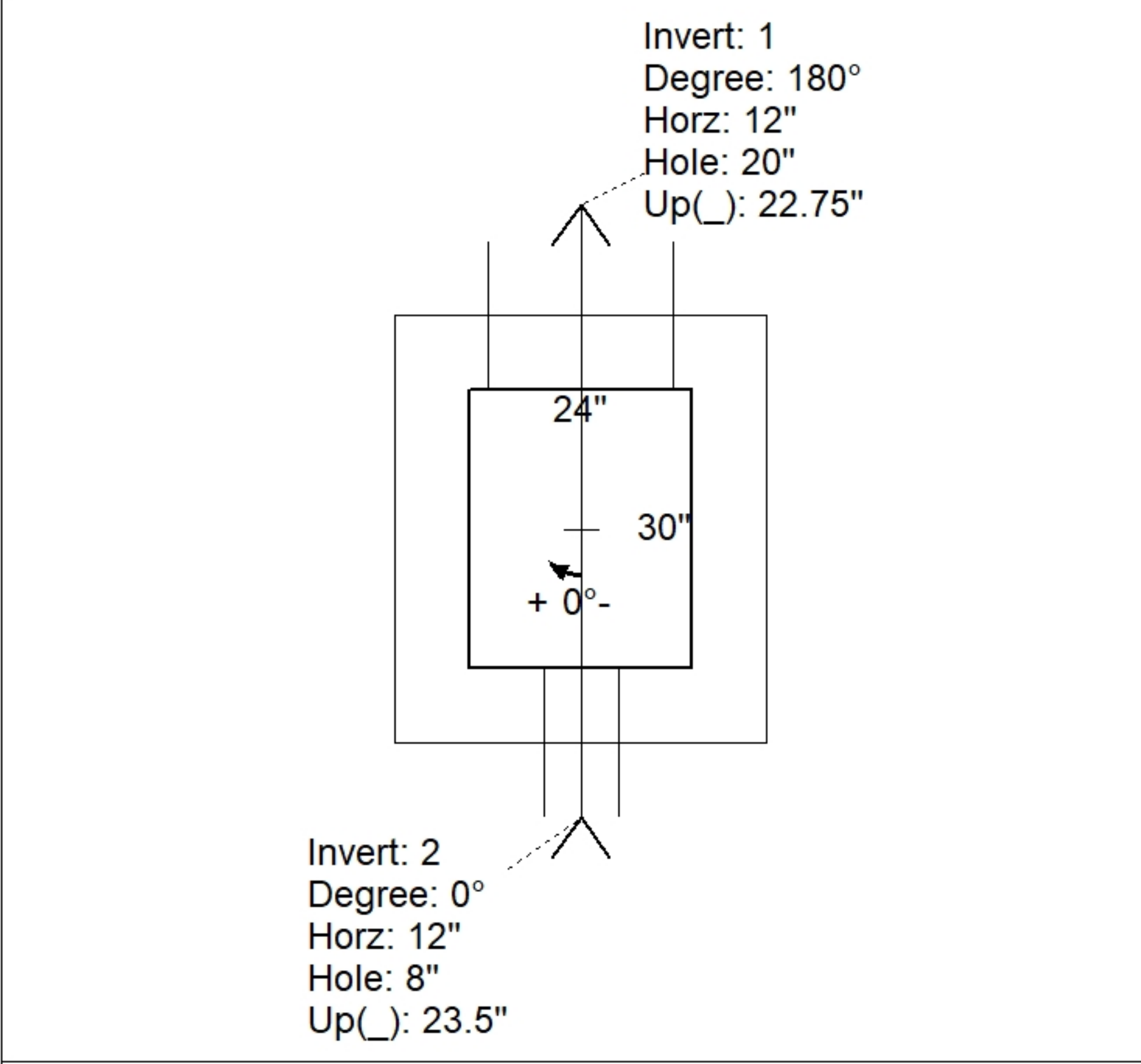
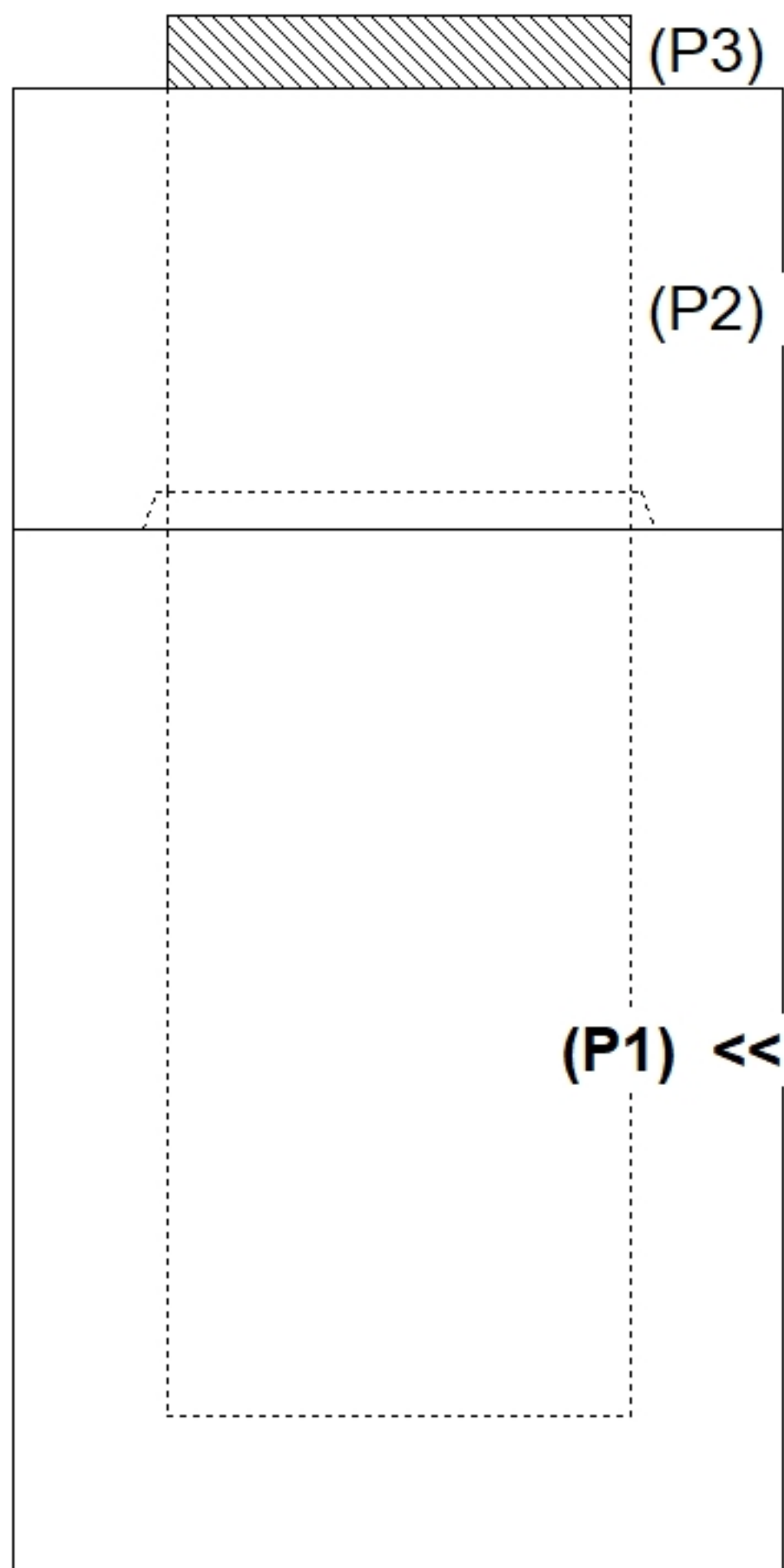
1. CASTING: HOE KY-460-11F/G PROVIDED BY ICAST.
2. PER ASTM C913 SPECIFICATIONS.
3. CONCRETE = 4,500 PSI AT 28 DAYS.
4. REINFORCING PER ASTM A615 (GRADE 60).
 - WALLS (As .31) #5 BARS AT 12" C.C.E.W.
 - FLOOR (As .31) #5 BARS AT 12" C.C.E.W.

Rim: 581.59' Rim to Invert: 4.09' Slack: 0.33" Sump: 24" Step Position:

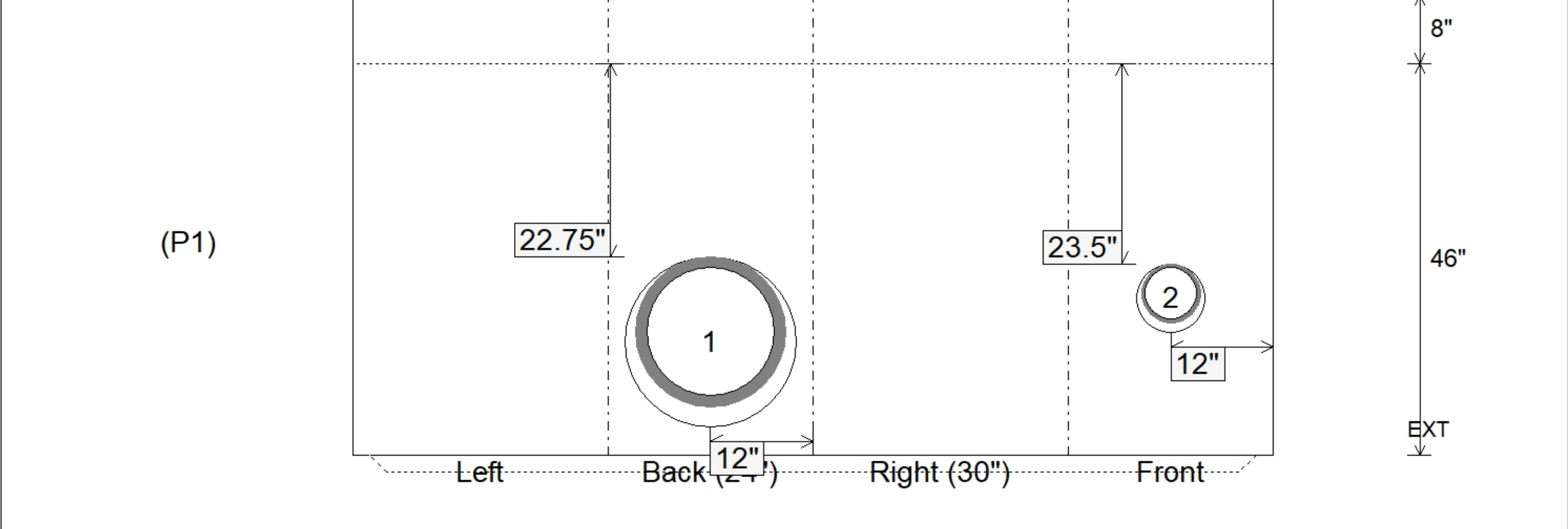
Position	Elev	Angle	Ext. (cw)	Pipe	Pipe OD	Connector	Hole	Horz Size	Up ()	Offset
Invert 1	577.5'	180°	20"	15" HDPE	17.6"	Hole 20	20"	20"	22.75"	0"
Invert 2	577.5'	0°	20"	6" HDPE (perf pipe)	6.9"	Hole 8	8"	8"	23.5"	0"
Invert 3										
Invert 4										
Invert 5										
Invert 6										
Invert 7										
Invert 8										

RIGHT-SIDE UP VIEW (int. dimensions)

UPSIDE-DOWN VIEW (int. dimensions)



INSIDE WALL DIMENSIONS



Coating (Int): Coating (Ext):	Seam Up: Tongue Seam Dn: n/a	Wall Thickness: 8" Floor Height: 8"	Height (Int): 46" Height (Ext): 54"	Weight (Net): 5314 lb Volume (Net): 1.36cu.yd
----------------------------------	---------------------------------	--	--	--