

Job Name: 25-3442 - Take 5
Job Location: Newburgh, IN 47630
Contractor: Stemaly Excavating Inc.

PC: Trevor Lewis
 TECH: J. Horsley - A
 Plant: Beaver Dam, KY



Structure ID: **SI 3**
 Spec: Storm
 Type: STM.MH
 Size: 48"

Rim: 393.45'
 Invert: 389.93'
 Rim to Invert: 3.52'

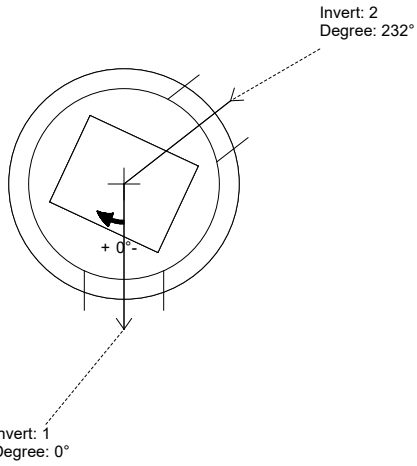
Sump: 1.3"
 Floor (Top): 389.822'
 Floor Height: 6"

Floor (Bot): 389.322'
 Overall Height: 4'
 Slack: 1.54"

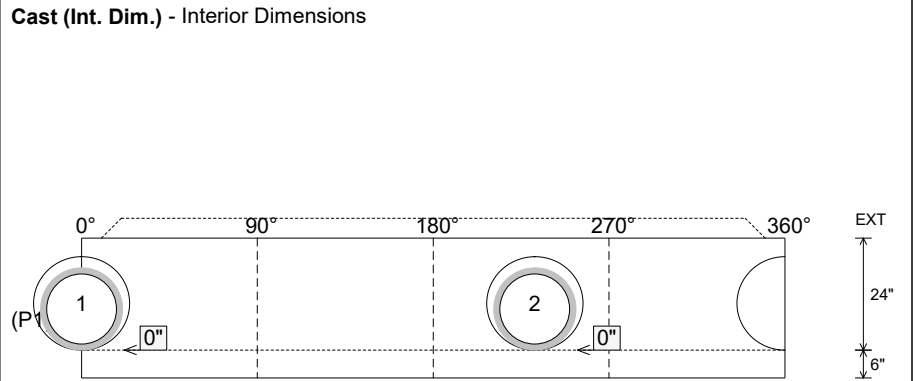
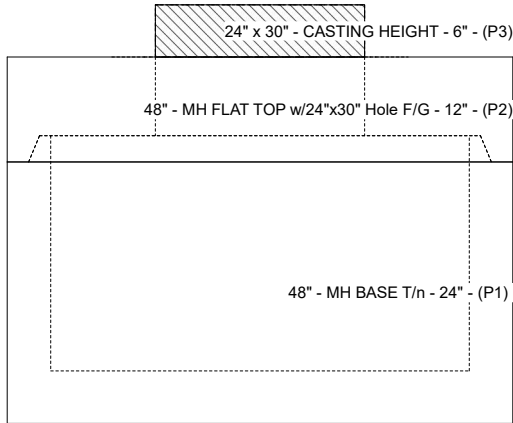
Structure Notes:
 PLAN LABEL: 3
 1. PER ASTM C-478 SPECIFICATIONS
 2. CONCRETE: 4,000 PSI AT 28 DAYS
 3. REINFORCEMENT:
 - FLAT LID: #4 BAR @ 10" C.C. E.W. (GRADE 60)
 - BASE: PER ASTM A615
 4. NO STORM INVERT
 5. NO STEPS
 6. HOE 360 FRAME, L-VANE GRATE, & CURB HOOD SUPPLIED BY ICAST

STRUCTURE SUMMARY:

P3) 24" x 30" - CASTING HEIGHT - 6"	0 lb
P2) 48" - MH FLAT TOP w/24"x30" Hole F/G - 12"	1935 lb
P1) 48" - MH BASE T/n - 24"	2736 lb
1) CASTING - HOE 360 L Vane Set (F/G/H)	362 lb
1) 48" - Conseal CS-102 1.00"	0 lb
1) 24" x 30" - Conseal CS-102 1.00"	0 lb
2) Hole - 20	0 lb
Structure Total:	5034 lb



Position	Elev	Angle	Pipe	Pipe OD	Hole	Connector	Up ()	Ref
Rim	393.45'							
Reducer								
Invert 1	389.93'	0°	15" HDPE	17.6"	20"	Hole 20	0"	P1
Invert 2	389.93'	232°	15" HDPE	17.6"	20"	Hole 20	0"	P1
Invert 3								
Invert 4								
Invert 5								
Invert 6								
Invert 7								
Invert 8								



Submittal Drawing
 2/22/2026 3:21:14 PM

SUBMITTAL
 APPROVED BY: