

Job Name: 25-3442 - Take 5
 Job Location: Newburgh, IN 47630
 Contractor: Stemaly Excavating Inc.

Plant: Beaver Dam, KY
 2/22/2026 4:12:17 PM

Tech: J. Horsley - A
 PC: Trevor Lewis



Structure ID: SI 3

P2 MH048LD12-24X30RECT

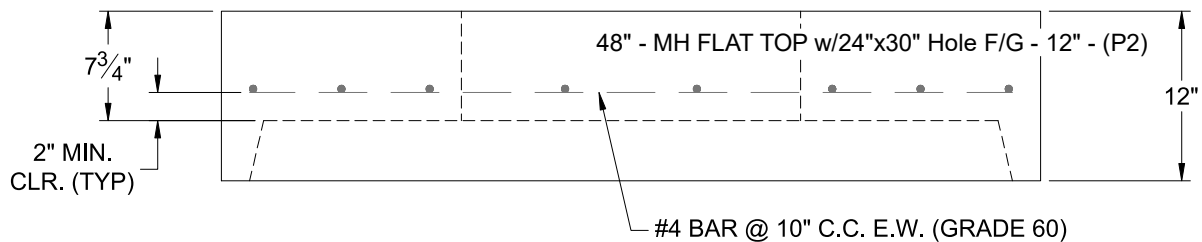
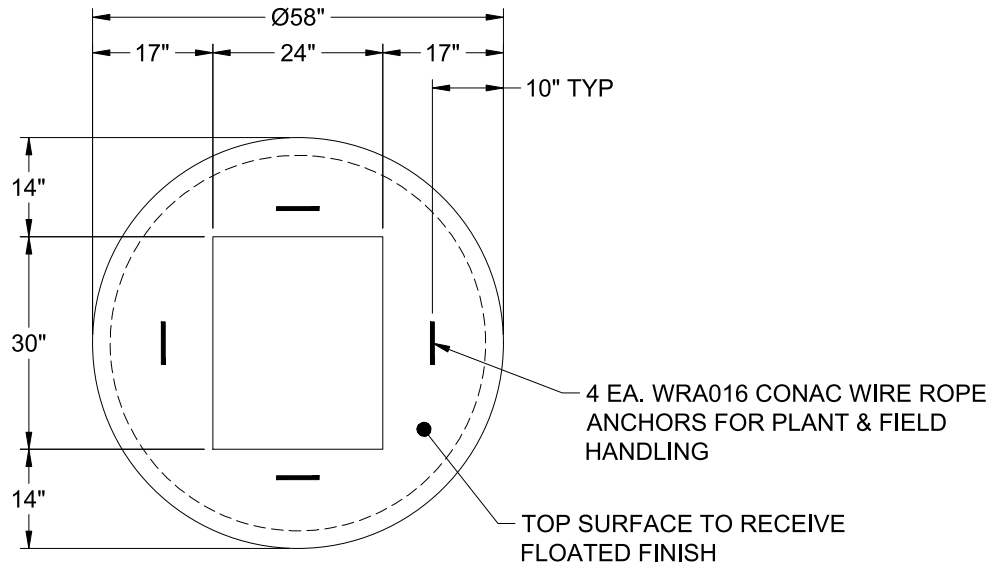
MH FLAT TOP w/24"x30" Hole F/G

- P3) 24" x 30" - CASTING HEIGHT - 6"
- P2) 48" - MH FLAT TOP w/24"x30" Hole F/G - 12"
- P1) 48" - MH BASE T/n - 24"
- 1) CASTING - HOE 360 L Vane Set (F/G/H)
- 1) 48" - Conseal CS-102 1.00"
- 1) 24" x 30" - Conseal CS-102 1.00"
- 2) Hole - 20

0 lb
 1935 lb
 2736 lb
 362 lb
 0 lb
 0 lb
 0 lb

 0 lb
 Structure Total: 5034 lb

- Structure Notes:
1. PER ASTM C-478 SPECIFICATIONS
 2. CONCRETE: 4,000 PSI AT 28 DAYS
 3. REINFORCEMENT: #4 BAR @ 10" C.C. E.W. (GRADE 60) - 2" MIN. REBAR CLEARANCE (TYP)
 4. HOE 360 FRAME, L-VANE GRATE, & CURB HOOD SUPPLIED BY ICAST
 5. LIFTERS: 4 EA. WRA016 CONAC WIRE ROPE ANCHORS FOR PLANT & FIELD HANDLING
 6. TOP SURFACE TO RECEIVE FLOATED FINISH



Coating (Int):
 Coating (Ext):

Seam Up: Flat
 Seam Dn: Groove

Wall Thickness: 5"

Height (Ext): 12"

Weight (Net): 1935 lb
 Volume (Net): 0.49cu.yd