

**Job Name: 25-3442 - Take 5**  
**Job Location: Newburgh, IN 47630**  
**Contractor: Stemaly Excavating Inc.**

PC: Trevor Lewis  
 TECH: J. Horsley - A  
 Plant: Beaver Dam, KY



Structure ID: **SI 2**  
 Spec: Storm  
 Type: STM.MH  
 Size: 48"

Rim: 393.6'  
 Invert: 390.15'  
 Rim to Invert: 3.45'

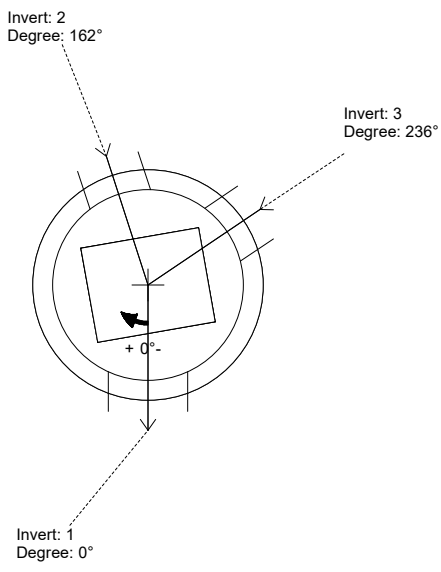
Sump: 1.3"  
 Floor (Top): 390.042'  
 Floor Height: 6"

Floor (Bot): 389.542'  
 Overall Height: 4'  
 Slack: 0.7"

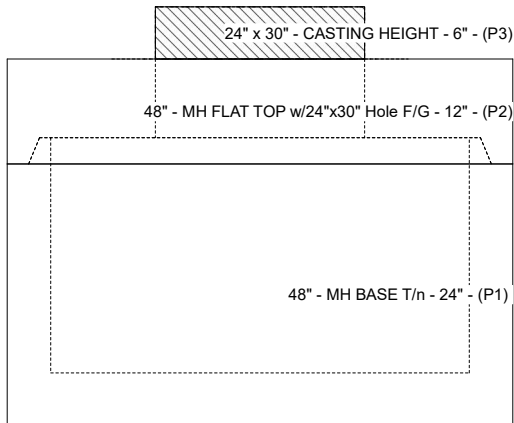
**Structure Notes:**  
 PLAN LABEL: 2  
 1. PER ASTM C-478 SPECIFICATIONS  
 2. CONCRETE: 4,000 PSI AT 28 DAYS  
 3. REINFORCEMENT:  
 - FLAT LID: #4 BAR @ 10" C.C. E.W. (GRADE 60)  
 - BASE: PER ASTM A615  
 4. NO STORM INVERT  
 5. NO STEPS  
 6. HOE 360 FRAME, L-VANE GRATE, & CURB HOOD SUPPLIED BY ICAST

**STRUCTURE SUMMARY:**

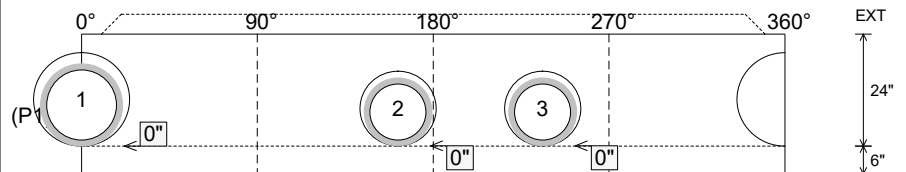
P3) 24" x 30" - CASTING HEIGHT - 6"	0 lb
P2) 48" - MH FLAT TOP w/24"x30" Hole F/G - 12"	1935 lb
P1) 48" - MH BASE T/n - 24"	2700 lb
1) CASTING - HOE 360 L Vane Set (F/G/H)	362 lb
1) 48" - Conseal CS-102 1.00"	0 lb
1) 24" x 30" - Conseal CS-102 1.00"	0 lb
1) Hole - 20	0 lb
2) Hole - 16	0 lb
	<hr/> 0 lb
<b>Structure Total:</b>	<b>4998 lb</b>



Position	Elev	Angle	Pipe	Pipe OD	Hole	Connector	Up ( )	Ref
Rim	393.6'							
Reducer								
Invert 1	390.15'	0°	15" HDPE	17.6"	20"	Hole 20	0"	P1
Invert 2	390.15'	162°	12" HDPE	14.5"	16"	Hole 16	0"	P1
Invert 3	390.15'	236°	12" HDPE	14.5"	16"	Hole 16	0"	P1
Invert 4								
Invert 5								
Invert 6								
Invert 7								
Invert 8								



**Cast (Int. Dim.) - Interior Dimensions**



Submittal Drawing  
 2/22/2026 3:21:14 PM

SUBMITTAL  
 APPROVED BY: