

Job Name: 25-3442 - Take 5  
 Job Location: Newburgh, IN 47630  
 Contractor: Stemaly Excavating Inc.

Plant: Beaver Dam, KY  
 2/22/2026 4:12:16 PM

Tech: J. Horsley - A  
 PC: Trevor Lewis



**Structure ID: SI 2**

**P2 MH048LD12-24X30RECT**

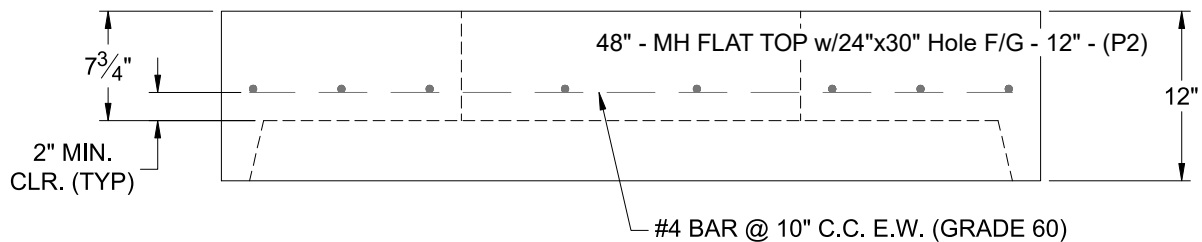
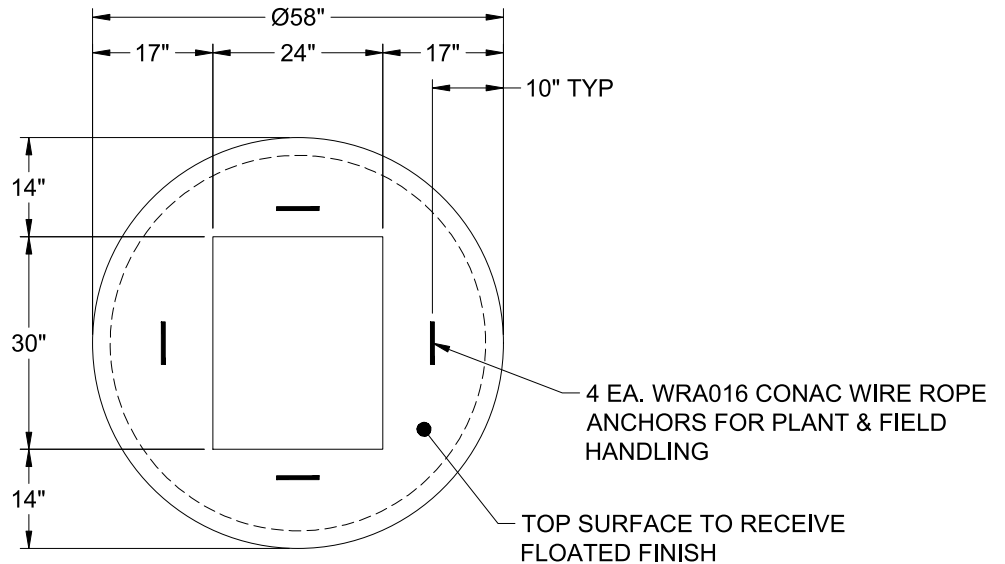
**MH FLAT TOP w/24"x30" Hole F/G**

- P3) 24" x 30" - CASTING HEIGHT - 6"
- P2) 48" - MH FLAT TOP w/24"x30" Hole F/G - 12"
- P1) 48" - MH BASE T/n - 24"
- 1) CASTING - HOE 360 L Vane Set (F/G/H)
- 1) 48" - Conseal CS-102 1.00"
- 1) 24" x 30" - Conseal CS-102 1.00"
- 1) Hole - 20
- 2) Hole - 16

0 lb  
 1935 lb  
 2700 lb  
 362 lb  
 0 lb  
 0 lb  
 0 lb  
 0 lb  
 -----  
 4998 lb

Structure Total:

- Structure Notes:
1. PER ASTM C-478 SPECIFICATIONS
  2. CONCRETE: 4,000 PSI AT 28 DAYS
  3. REINFORCEMENT: #4 BAR @ 10" C.C. E.W. (GRADE 60) - 2" MIN. REBAR CLEARANCE (TYP)
  4. HOE 360 FRAME, L-VANE GRATE, & CURB HOOD SUPPLIED BY ICAST
  5. LIFTERS: 4 EA. WRA016 CONAC WIRE ROPE ANCHORS FOR PLANT & FIELD HANDLING
  6. TOP SURFACE TO RECEIVE FLOATED FINISH



Coating (Int):  
 Coating (Ext):

Seam Up: Flat  
 Seam Dn: Groove

Wall Thickness: 5"

Height (Ext): 12"

Weight (Net): 1935 lb  
 Volume (Net): 0.49cu.yd