

Job Name: 25-3442 - Take 5
 Job Location: Newburgh, IN 47630
 Contractor: Stemaly Excavating Inc.

Plant: Beaver Dam, KY
 2/22/2026 4:12:16 PM

Tech: J. Horsley - A
 PC: Trevor Lewis



Structure ID: SI 1

P2 MH048LD07-24X30RECT

MH FLAT TOP w/24"x30" Hole F/F

- P3) 24" x 30" - CASTING HEIGHT - 6"
- P2) 48" - MH FLAT TOP w/24"x30" Hole F/F - 7"
- P1) 48" - MH BASE Custom Ht F/n - 31"
- 1) CASTING - HOE 360 L Vane Set (F/G/H)
- 1) 48" - Conseal CS-102 1.00"
- 1) 24" x 30" - Conseal CS-102 1.00"
- 2) Hole - 16

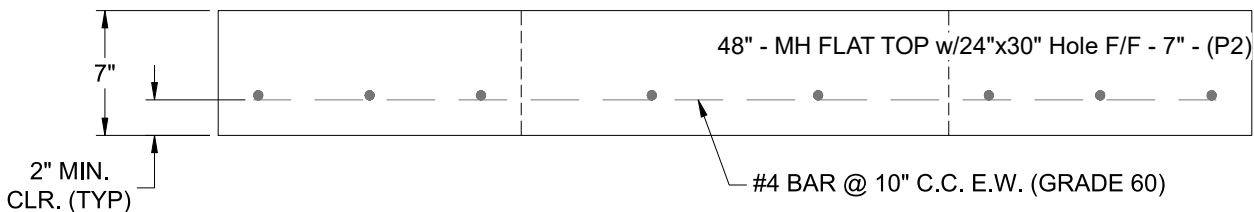
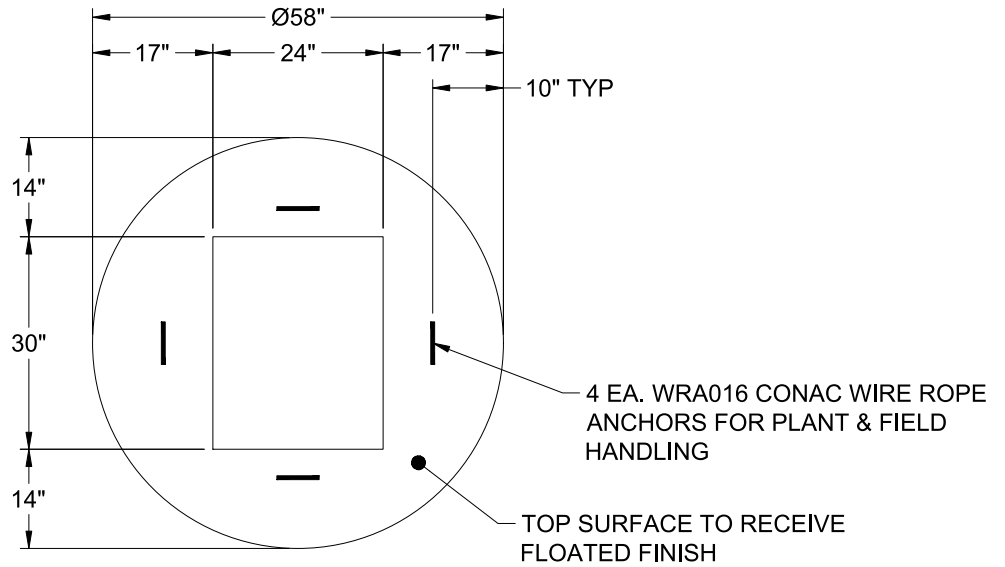
0 lb
 1129 lb
 3324 lb
 362 lb
 0 lb
 0 lb
 0 lb

 4815 lb

Structure Total:

Structure Notes:

1. PER ASTM C-478 SPECIFICATIONS
2. CONCRETE: 4,000 PSI AT 28 DAYS
3. REINFORCEMENT: #4 BAR @ 10" C.C. E.W. (GRADE 60) - 2" MIN. REBAR CLEARANCE (TYP)
4. HOE 360 FRAME, L-VANE GRATE, & CURB HOOD SUPPLIED BY ICAST
5. LIFTERS: 4 EA. WRA016 CONAC WIRE ROPE ANCHORS FOR PLANT & FIELD HANDLING
6. TOP SURFACE TO RECEIVE FLOATED FINISH



Coating (Int):
 Coating (Ext):

Seam Up: Flat
 Seam Dn: Flat

Wall Thickness: 5"

Height (Ext): 7"

Weight (Net): 1129 lb
 Volume (Net): 0.29cu.yd