

**Job Name: 25-3442 - Take 5**  
**Job Location: Newburgh, IN 47630**  
**Contractor: Stemaly Excavating Inc.**

PC: Trevor Lewis  
 TECH: J. Horsley - A  
 Plant: Beaver Dam, KY



Structure ID: **MH-12**  
 Spec: Storm  
 Type: STM.MH  
 Size: 48"

Rim: 394.55'  
 Invert: 390.43'  
 Rim to Invert: 4.12'

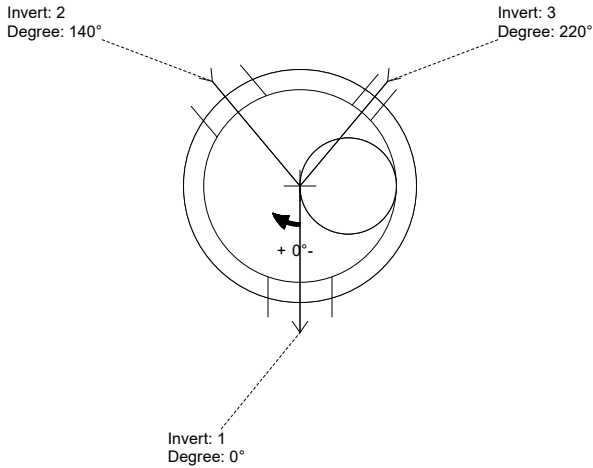
Sump: 1.25"  
 Floor (Top): 390.326'  
 Floor Height: 6"

Floor (Bot): 389.826'  
 Overall Height: 4.583'  
 Slack: 1.69"

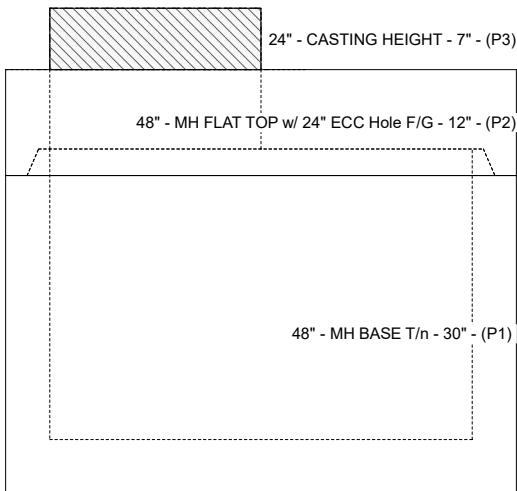
**Structure Notes:**  
 PLAN LABEL: 12  
 1. PER ASTM C-478 SPECIFICATIONS  
 2. CONCRETE: 4,000 PSI AT 28 DAYS  
 3. REINFORCEMENT:  
 - FLAT LID: #4 BAR @ 10" C.C. E.W. (GRADE 60)  
 - BASE: PER ASTM A615  
 4. NO STORM INVERT  
 5. NO STEPS  
 6. HOE MC-315 FRAME & COVER "STORM" SUPPLIED BY ICAST

**STRUCTURE SUMMARY:**

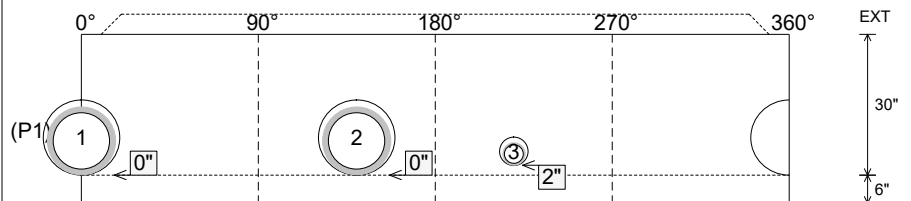
P3) 24" - CASTING HEIGHT - 7"	0 lb
P2) 48" - MH FLAT TOP w/ 24" ECC Hole F/G - 12"	1561 lb
P1) 48" - MH BASE T/n - 30"	3183 lb
1) CASTING - HOE MC-315 F/C Storm	258 lb
1) 48" - Conseal CS-102 1.00"	0 lb
2) Hole - 16	0 lb
1) Hole - 6	0 lb
<b>Structure Total:</b>	<b>5002 lb</b>



Position	Elev	Angle	Pipe	Pipe OD	Hole	Connector	Up (L)	Ref
Rim	394.55'							
Reducer								
Invert 1	390.43'	0°	12" HDPE	14.5"	16"	Hole 16	0"	P1
Invert 2	390.43'	140°	12" HDPE	14.5"	16"	Hole 16	0"	P1
Invert 3	390.53'	220°	4" HDPE (perf pipe)	4.8"	6"	Hole 6	2"	P1
Invert 4								
Invert 5								
Invert 6								
Invert 7								
Invert 8								



**Cast (Int. Dim.) - Interior Dimensions**



Submittal Drawing  
 2/23/2026 6:31:05 AM

SUBMITTAL  
 APPROVED BY: