

Job Name: 25-3438 - John H. Stigall Drive
 Job Location: Danville, KY
 Contractor: Todd Johnson Contracting, Inc.

Plant: 100
 11/6/2025 4:37:33 PM

Tech: J. Horsley - F
 PC: C. Goff



Structure ID: B-1

P1A STORMINVERT12

STORM INVERT CHANNEL 1/2 HEIGHT

- P3) 24" x 36" - CASTING HEIGHT - 12"
- P2) 48" - MH FLAT TOP w/24"x36" Hole F/G - 12"
- P1) 48" - MH BASE Custom Ht T/n - 39"

1) STORM INVERT CHANNEL - 1/2 HEIGHT

- 1) CASTING - HOE 525 LV SET (F/G/H)
- 1) 48" - Conseal CS-102 1.00"
- 1) 24" x 36" - Conseal CS-102 1.00"
- 2) Hole - 22
- 3) MH Step ML-10-TDS-NCR - 10"

0 lb
 1300 lb
 3725 lb
 1440 lb
 442 lb
 0 lb
 0 lb
 0 lb
 0 lb
 0 lb
 Structure Total: 6907 lb

Structure Notes:

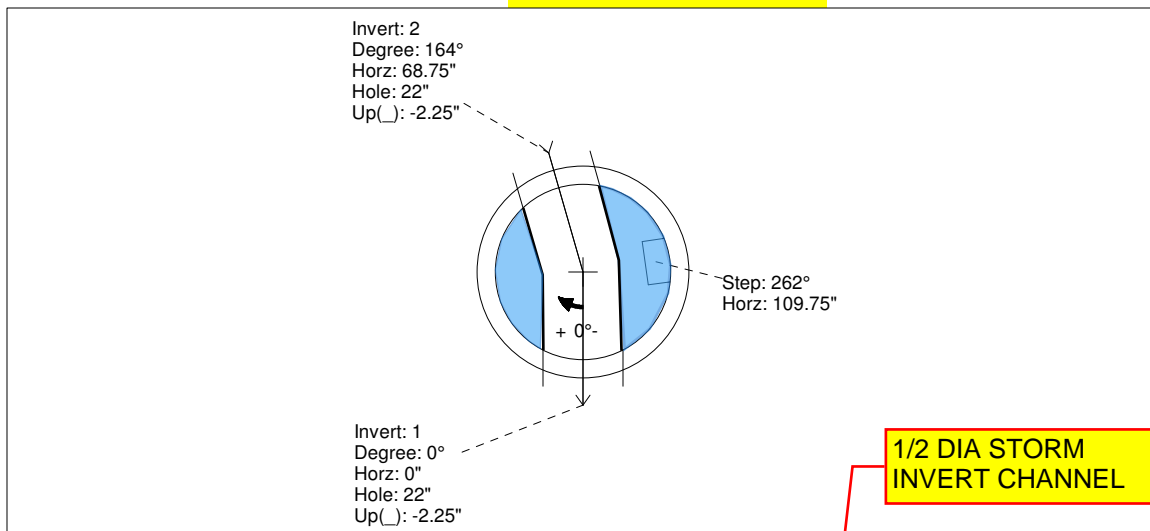
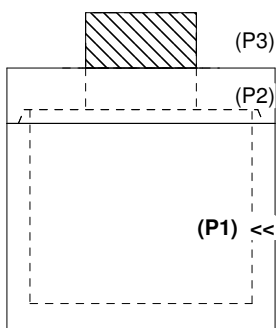
1. PER ASTM C478 SPECIFICATIONS.
2. CONCRETE = 4,000 PSI AT 28 DAYS.
3. NO STEPS AND NO INVERT CHANNEL.
4. CASTING BY ICAST (HOE 525 LV SET (F/G/H)).

REINFORCING PER ASTM A615 (GRADE 60).
 - TOP SLAB (As .62) #5 BARS AT 6" C.C.E.W..
 - RISER/WALLS (As .12)
 - FLOOR (As .31) #5 BARS AT 12" C.C.E.W.

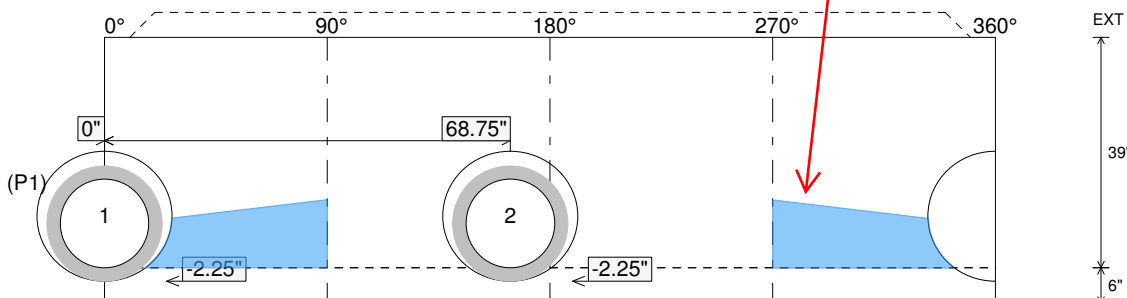
Rim: 974.18' Rim to Invert: 5.31' Slack: 0.72" Sump: 0" Step Position: 262°

Position	Elev	Angle	Ext. (cw)	Pipe	Pipe OD	Connector	Hole	Horz Size	Up ()	Offset
Invert 1	968.87'	0°	0"	15" RCP B WALL	19.5"	Hole 22	22"	22.854"	-2.25"	0"
Invert 2	968.87'	164°	83"	15" RCP B WALL	19.5"	Hole 22	22"	22.854"	-2.25"	0"
Invert 3										
Invert 4										
Invert 5										
Invert 6										
Invert 7										
Invert 8										

RIGHT-SIDE UP VIEW (int. dimensions) - - SECONDARY POUR



INSIDE WALL DIMENSIONS



Coating (Int):
 Coating (Ext):

Seam Up: Tongue
 Seam Dn: n/a

Wall Thickness: 5"
 Floor Height: 6"

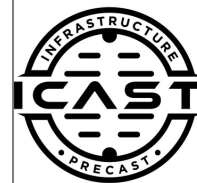
Height (Int): 39"
 Height (Ext): 45"

Weight (Net): 3725 lb
 Volume (Net): 0.95cu.yd

Job Name: 25-3438 - John H. Stigall Drive
 Job Location: Danville, KY
 Contractor: Todd Johnson Contracting, Inc.

Plant: 100
 11/6/2025 4:37:34 PM

Tech: J. Horsley - F
 PC: C. Goff



Structure ID: B-2

P1A STORMINVERT12

STORM INVERT CHANNEL 1/2 HEIGHT

- P2) 24" x 36" - CASTING HEIGHT - 12"
- P1) 24" x 36" - BOX BASE 8inW, 8inF, Variable Ht F/n - 51"
- 1) **STORM INVERT CHANNEL - 1/2 HEIGHT**
- 1) CASTING - HOE 525 LV SET (F/G/H)
- 1) 24" x 36" - Conseal CS-102 1.00"
- 1) Hole - 22"

0 lb
 6345 lb
 1440 lb
 442 lb
 0 lb
 0 lb

 8227 lb

Structure Total: 8227 lb

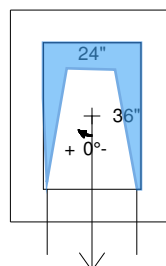
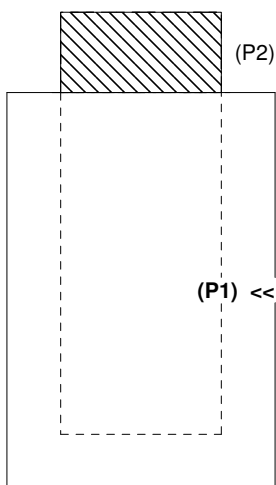
- Structure Notes:**
1. PER ASTM C913 SPECIFICATIONS.
 2. CONCRETE = 4,000 PSI AT 28 DAYS.
 3. NO STEPS AND NO INVERT CHANNEL.
 4. CASTING BY ICAST (HOE 525 LV SET (F/G/H)).

REINFORCING PER ASTM A615 (GRADE 60).
 - WALLS (As .12) #5 BARS AT 12" C.C.E.W.
 - FLOOR (As .12) #5 BARS AT 12" C.C.E.W.

Rim: 975.12' Rim to Invert: 5.25' Slack: 0" Sump: 0" Step Position:

Position	Elev	Angle	Ext. (cw)	Pipe	Pipe OD	Connector	Hole	Horz Size	Up (⌋)	Offset
Invert 1	969.87'	0°	20"	15" RCP B WALL	19.5"	Hole 22	22"	22"	-2.25"	0"
Invert 2										
Invert 3										
Invert 4										
Invert 5										
Invert 6										
Invert 7										
Invert 8										

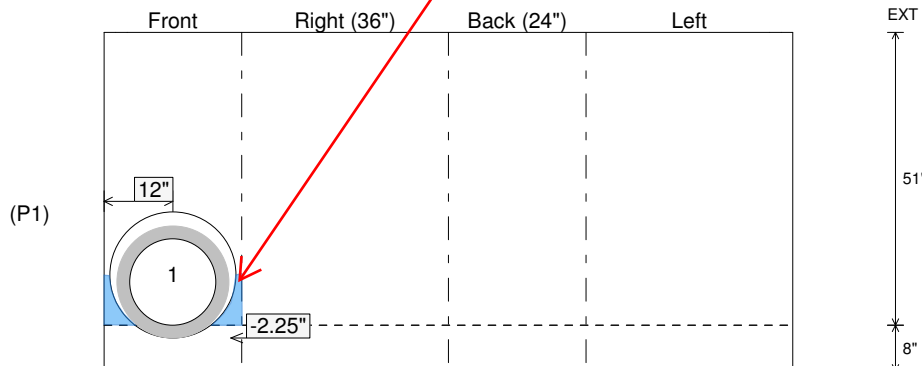
RIGHT-SIDE UP VIEW (int. dimensions) - - SECONDARY POUR



Invert: 1
 Degree: 0°
 Horz: 12"
 Hole: 22"
 Up(⌋): -2.25"

**1/2 DIA STORM
 INVERT CHANNEL**

INSIDE WALL DIMENSIONS



Coating (Int):
 Coating (Ext):

Seam Up: Flat
 Seam Dn: n/a

Wall Thickness: 8"
 Floor Height: 8"

Height (Int): 51"
 Height (Ext): 59"

Weight (Net): 6345 lb
 Volume (Net): 1.62cu.yd

Job Name: 25-3438 - John H. Stigall Drive
 Job Location: Danville, KY
 Contractor: Todd Johnson Contracting, Inc.

Plant: 100
 11/6/2025 4:37:34 PM

Tech: J. Horsley - F
 PC: C. Goff



Structure ID: C-2

P1A STORMINVERT12

STORM INVERT CHANNEL 1/2 HEIGHT

- P2) 24" x 36" - CASTING HEIGHT - 12"
- P1) 24" x 36" - BOX BASE 8inW, 8inF, Variable Ht F/n - 30"
- 1) **STORM INVERT CHANNEL - 1/2 HEIGHT**
- 1) CASTING - HOE 525 LV SET (F/G/H)
- 1) 24" x 36" - Conseal CS-102 1.00"
- 2) Hole - 22"

0 lb
 3947 lb
 1440 lb
 442 lb
 0 lb
 0 lb

 0 lb
 Structure Total: 5829 lb

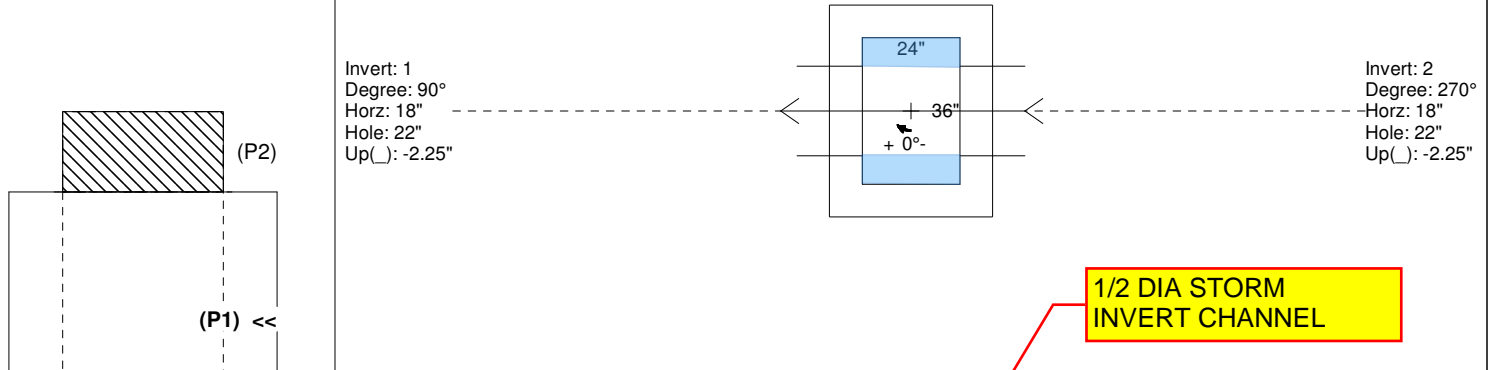
Structure Notes:
 1. PER ASTM C913 SPECIFICATIONS.
 2. CONCRETE = 4,000 PSI AT 28 DAYS.
 3. NO STEPS AND NO INVERT CHANNEL.
 4. CASTING BY ICAST (HOE 525 LV SET (F/G/H)).

REINFORCING PER ASTM A615 (GRADE 60).
 - WALLS (As .12) #5 BARS AT 12" C.C.E.W.
 - FLOOR (As .12) #5 BARS AT 12" C.C.E.W.

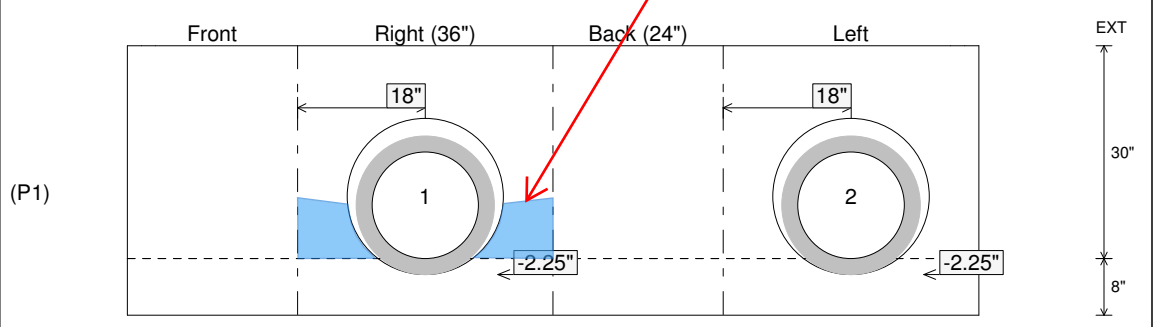
Rim: 968.61' Rim to Invert: 3.53' Slack: 0.36" Sump: 0" Step Position:

Position	Elev	Angle	Ext. (cw)	Pipe	Pipe OD	Connector	Hole	Horz Size	Up ()	Offset
Invert 1	965.08'	90°	26"	15" RCP B WALL	19.5"	Hole 22	22"	22"	-2.25"	0"
Invert 2	965.08'	270°	26"	15" RCP B WALL	19.5"	Hole 22	22"	22"	-2.25"	0"
Invert 3										
Invert 4										
Invert 5										
Invert 6										
Invert 7										
Invert 8										

RIGHT-SIDE UP VIEW (int. dimensions) - - SECONDARY POUR



INSIDE WALL DIMENSIONS



Coating (Int): Coating (Ext):	Seam Up: Flat Seam Dn: n/a	Wall Thickness: 8" Floor Height: 8"	Height (Int): 30" Height (Ext): 38"	Weight (Net): 3947 lb Volume (Net): 1.01cu.yd
----------------------------------	-------------------------------	--	--	--

Job Name: 25-3438 - John H. Stigall Drive
 Job Location: Danville, KY
 Contractor: Todd Johnson Contracting, Inc.

Plant: 100
 11/6/2025 4:37:35 PM

Tech: J. Horsley - F
 PC: C. Goff



Structure ID: C-3

P1A STORMINVERT12

STORM INVERT CHANNEL 1/2 HEIGHT

- P2) 24" x 36" - CASTING HEIGHT - 12"
- P1) 24" x 36" - BOX BASE 8inW, 8inF, Variable Ht F/n - 25"
- 1) STORM INVERT CHANNEL - 1/2 HEIGHT**
- 1) CASTING - HOE 525 LV SET (F/G/H)
- 1) 24" x 36" - Conseal CS-102 1.00"
- 1) Hole - 22"

0 lb
 3666 lb
 1440 lb
 442 lb
 0 lb
 0 lb

 Structure Total: 5548 lb

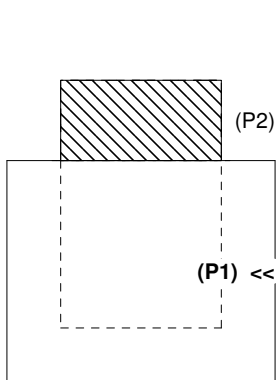
- Structure Notes:**
1. PER ASTM C913 SPECIFICATIONS.
 2. CONCRETE = 4,000 PSI AT 28 DAYS.
 3. NO STEPS AND NO INVERT CHANNEL.
 4. CASTING BY ICAST (HOE 525 LV SET (F/G/H)).

REINFORCING PER ASTM A615 (GRADE 60).
 - WALLS (As .12) #5 BARS AT 12" C.C.E.W.
 - FLOOR (As .12) #5 BARS AT 12" C.C.E.W.

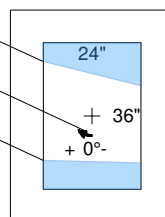
Rim: 968.4' Rim to Invert: 3.16' Slack: 0.92" Sump: 0" Step Position:

Position	Elev	Angle	Ext. (cw)	Pipe	Pipe OD	Connector	Hole	Horz Size	Up (↓)	Offset
Invert 1	965.24'	115°	30.875"	15" RCP B WALL	19.5"	Hole 22	22"	24.274"	-2.25"	-4"
Invert 2										
Invert 3										
Invert 4										
Invert 5										
Invert 6										
Invert 7										
Invert 8										

RIGHT-SIDE UP VIEW (int. dimensions) - - SECONDARY POUR

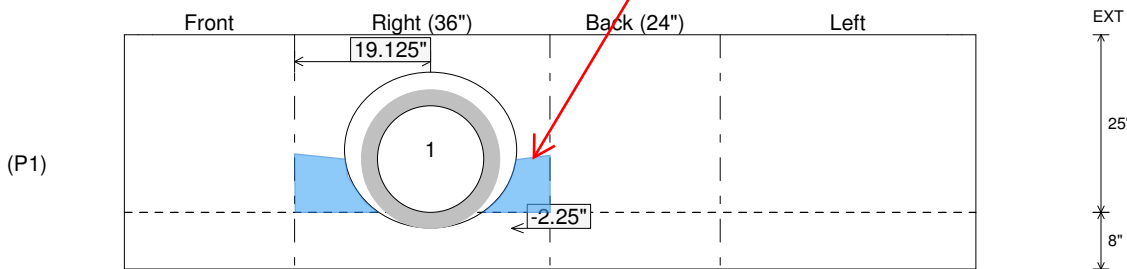


Invert: 1
 Degree: 115°
 Horz: 19.125"
 Hole: 22"
 Up(↓): -2.25"



1/2 DIA STORM INVERT CHANNEL

INSIDE WALL DIMENSIONS



Coating (Int):
 Coating (Ext):

Seam Up: Flat
 Seam Dn: n/a

Wall Thickness: 8"
 Floor Height: 8"

Height (Int): 25"
 Height (Ext): 33"

Weight (Net): 3666 lb
 Volume (Net): 0.94cu.yd

Job Name: 25-3438 - John H. Stigall Drive
 Job Location: Danville, KY
 Contractor: Todd Johnson Contracting, Inc.

Plant: 100
 11/6/2025 4:37:35 PM

Tech: J. Horsley - F
 PC: C. Goff



Structure ID: F-1

P1A STORMINVERT12

STORM INVERT CHANNEL 1/2 HEIGHT

- P3) 24" x 36" - CASTING HEIGHT - 12"
- P2) 48" - MH FLAT TOP w/24"x36" Hole F/G - 12"
- P1) 48" - MH BASE T/n - 54"

1) STORM INVERT CHANNEL - 1/2 HEIGHT

- 1) CASTING - HOE 525 LV SET (F/G/H)
- 1) 48" - Conseal CS-102 1.00"
- 1) 24" x 36" - Conseal CS-102 1.00"
- 3) Hole - 22
- 5) MH Step ML-10-TDS-NCR - 10"

0 lb
 1300 lb
 4609 lb
 1440 lb
 442 lb
 0 lb
 0 lb
 0 lb
 0 lb
 0 lb
 Structure Total: 7791 lb

Structure Notes:

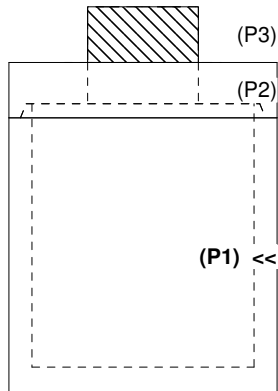
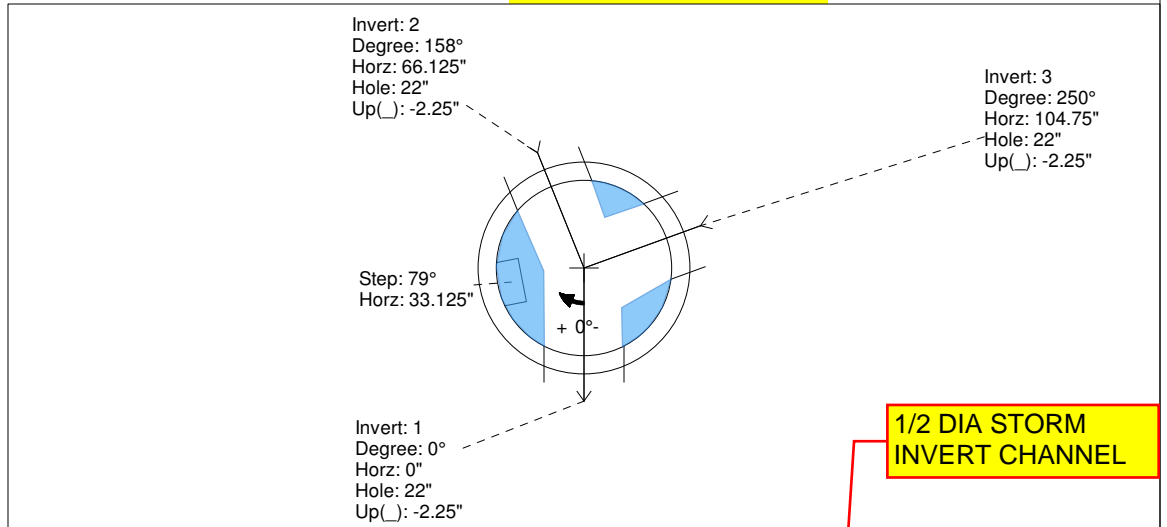
1. PER ASTM C478 SPECIFICATIONS.
2. CONCRETE = 4,000 PSI AT 28 DAYS.
3. NO STEPS AND NO INVERT CHANNEL.
4. CASTING BY ICAST (HOE 525 LV SET (F/G/H)).

REINFORCING PER ASTM A615 (GRADE 60).
 - TOP SLAB (As .62) #5 BARS AT 6" C.C.E.W..
 - RISER/WALLS (As .12)
 - FLOOR (As .31) #5 BARS AT 12" C.C.E.W.

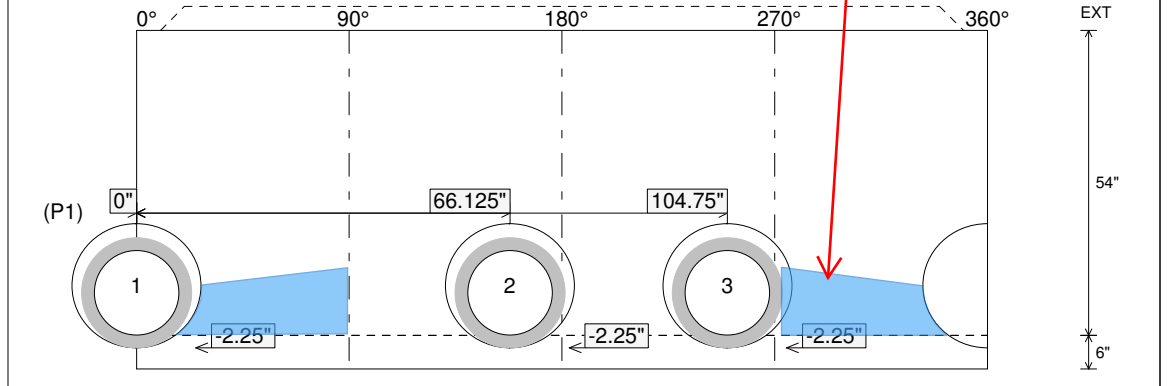
Rim: 961.31' Rim to Invert: 6.53' Slack: 0.36" Sump: 0" Step Position: 79°

Position	Elev	Angle	Ext. (cw)	Pipe	Pipe OD	Connector	Hole	Horz Size	Up ()	Offset
Invert 1	954.78'	0°	0"	15" RCP B WALL	19.5"	Hole 22	22"	22.854"	-2.25"	0"
Invert 2	954.78'	158°	80"	15" RCP B WALL	19.5"	Hole 22	22"	22.854"	-2.25"	0"
Invert 3	954.78'	250°	126.5"	15" RCP B WALL	19.5"	Hole 22	22"	22.854"	-2.25"	0"
Invert 4										
Invert 5										
Invert 6										
Invert 7										
Invert 8										

RIGHT-SIDE UP VIEW (int. dimensions) - - SECONDARY POUR



INSIDE WALL DIMENSIONS

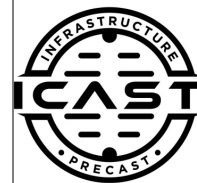


Coating (Int): Coating (Ext):	Seam Up: Tongue Seam Dn: n/a	Wall Thickness: 5" Floor Height: 6"	Height (Int): 54" Height (Ext): 60"	Weight (Net): 4609 lb Volume (Net): 1.18cu.yd
----------------------------------	---------------------------------	--	--	--

Job Name: 25-3438 - John H. Stigall Drive
 Job Location: Danville, KY
 Contractor: Todd Johnson Contracting, Inc.

Plant: 100
 11/6/2025 4:37:36 PM

Tech: J. Horsley - F
 PC: C. Goff



Structure ID: F-2

P1A STORMINVERT12

STORM INVERT CHANNEL 1/2 HEIGHT

- P2) 24" x 36" - CASTING HEIGHT - 12"
 P1) 24" x 36" - BOX BASE 8inW, 8inF, Variable Ht F/n - 31"
1) STORM INVERT CHANNEL - 1/2 HEIGHT
 1) CASTING - HOE 525 LV SET (F/G/H)
 1) 24" x 36" - Conseal CS-102 1.00"
 2) Hole - 22"

0 lb
 4049 lb
 1440 lb
 442 lb
 0 lb
 0 lb

 Structure Total: 5931 lb

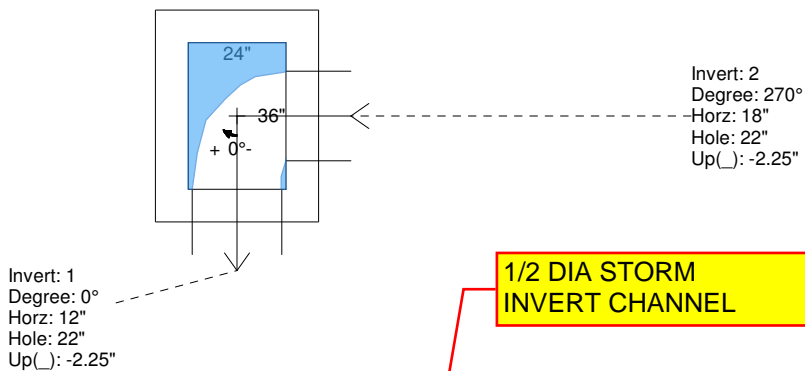
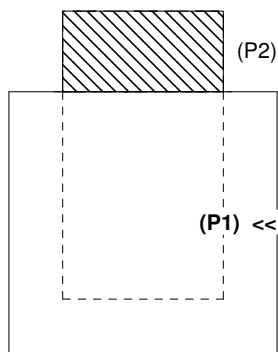
- Structure Notes:**
 1. PER ASTM C913 SPECIFICATIONS.
 2. CONCRETE = 4,000 PSI AT 28 DAYS.
 3. NO STEPS AND NO INVERT CHANNEL.
 4. CASTING BY ICAST (HOE 525 LV SET (F/G/H)).

REINFORCING PER ASTM A615 (GRADE 60).
 - WALLS (As .12) #5 BARS AT 12" C.C.E.W.
 - FLOOR (As .12) #5 BARS AT 12" C.C.E.W.

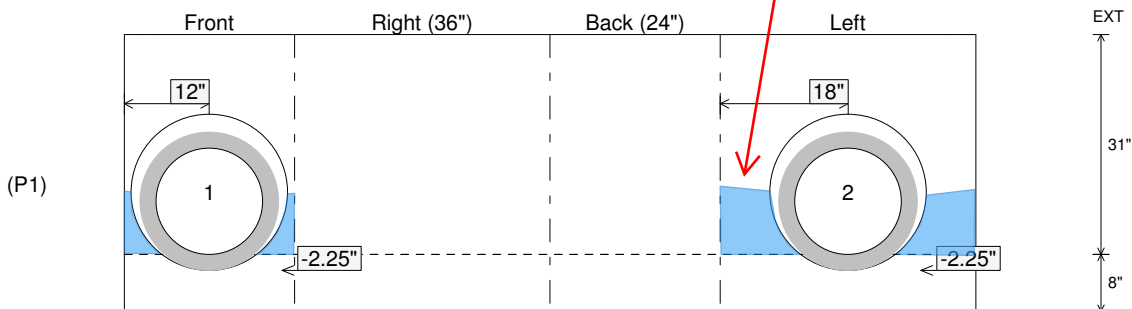
Rim: 960.34' Rim to Invert: 3.59' Slack: 0.08" Sump: 0" Step Position:

Position	Elev	Angle	Ext. (cw)	Pipe	Pipe OD	Connector	Hole	Horz Size	Up ()	Offset
Invert 1	956.75'	0°	20"	15" RCP B WALL	19.5"	Hole 22	22"	22"	-2.25"	0"
Invert 2	956.75'	270°	26"	15" RCP B WALL	19.5"	Hole 22	22"	22"	-2.25"	0"
Invert 3										
Invert 4										
Invert 5										
Invert 6										
Invert 7										
Invert 8										

RIGHT-SIDE UP VIEW (int. dimensions) - - SECONDARY POUR



INSIDE WALL DIMENSIONS



Coating (Int):
 Coating (Ext):

Seam Up: Flat
 Seam Dn: n/a

Wall Thickness: 8"
 Floor Height: 8"

Height (Int): 31"
 Height (Ext): 39"

Weight (Net): 4049 lb
 Volume (Net): 1.03cu.yd

Job Name: 25-3438 - John H. Stigall Drive
 Job Location: Danville, KY
 Contractor: Todd Johnson Contracting, Inc.

Plant: 100
 11/6/2025 4:37:36 PM

Tech: J. Horsley - F
 PC: C. Goff



Structure ID: F-3

P1A STORMINVERT12

STORM INVERT CHANNEL 1/2 HEIGHT

- P2) 24" x 36" - CASTING HEIGHT - 12"
- P1) 24" x 36" - BOX BASE 8inW, 8inF, Variable Ht F/n - 27"
- 1) **STORM INVERT CHANNEL - 1/2 HEIGHT**
- 1) CASTING - HOE 525 LV SET (F/G/H)
- 1) 24" x 36" - Conseal CS-102 1.00"
- 1) Hole - 22"

0 lb
 3896 lb
 1440 lb
 442 lb
 0 lb
 0 lb

 Structure Total: 5778 lb

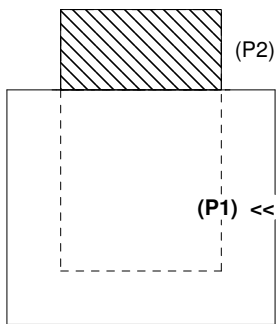
Structure Notes:
 1. PER ASTM C913 SPECIFICATIONS.
 2. CONCRETE = 4,000 PSI AT 28 DAYS.
 3. NO STEPS AND NO INVERT CHANNEL.
 4. CASTING BY ICAST (HOE 525 LV SET (F/G/H)).

REINFORCING PER ASTM A615 (GRADE 60).
 - WALLS (As .12) #5 BARS AT 12" C.C.E.W.
 - FLOOR (As .12) #5 BARS AT 12" C.C.E.W.

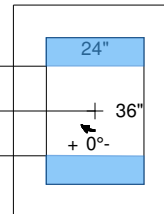
Rim: 960.34' Rim to Invert: 3.25' Slack: 0" Sump: 0" Step Position:

Position	Elev	Angle	Ext. (cw)	Pipe	Pipe OD	Connector	Hole	Horz Size	Up ()	Offset
Invert 1	957.09'	90°	26"	15" RCP B WALL	19.5"	Hole 22	22"	22"	-2.25"	0"
Invert 2										
Invert 3										
Invert 4										
Invert 5										
Invert 6										
Invert 7										
Invert 8										

RIGHT-SIDE UP VIEW (int. dimensions) - - SECONDARY POUR

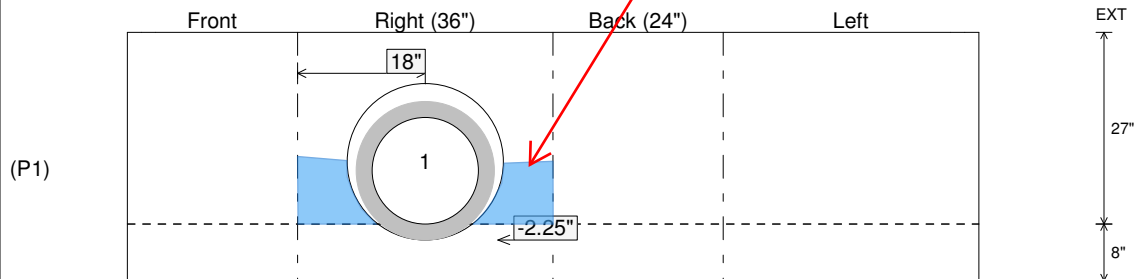


Invert: 1
 Degree: 90°
 Horz: 18"
 Hole: 22"
 Up() : -2.25"



1/2 DIA STORM INVERT CHANNEL

INSIDE WALL DIMENSIONS



Coating (Int): Coating (Ext):	Seam Up: Flat Seam Dn: n/a	Wall Thickness: 8" Floor Height: 8"	Height (Int): 27" Height (Ext): 35"	Weight (Net): 3896 lb Volume (Net): 1cu.yd
----------------------------------	-------------------------------	--	--	---

Job Name: 25-3438 - John H. Stigall Drive
 Job Location: Danville, KY
 Contractor: Todd Johnson Contracting, Inc.

Plant: 100
 11/6/2025 4:37:37 PM

Tech: J. Horsley - F
 PC: C. Goff



Structure ID: G-1

P1A STORMINVERT12

STORM INVERT CHANNEL 1/2 HEIGHT

- P2) 24" x 36" - CASTING HEIGHT - 12"
- P1) 24" x 36" - BOX BASE 8inW, 8inF, Variable Ht F/n - 45"
- 1) **STORM INVERT CHANNEL - 1/2 HEIGHT**
- 1) CASTING - HOE 525 LV SET (F/G/H)
- 1) 24" x 36" - Conseal CS-102 1.00"
- 1) Hole - 22"

0 lb
 5733 lb
 1440 lb
 442 lb
 0 lb
 0 lb

 Structure Total: 7615 lb

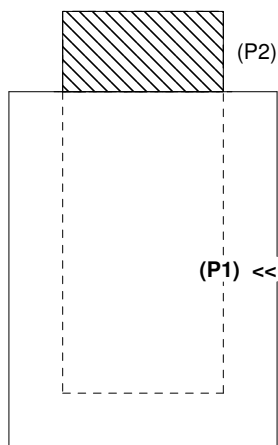
- Structure Notes:**
1. PER ASTM C913 SPECIFICATIONS.
 2. CONCRETE = 4,000 PSI AT 28 DAYS.
 3. NO STEPS AND NO INVERT CHANNEL.
 4. CASTING BY ICAST (HOE 525 LV SET (F/G/H)).

REINFORCING PER ASTM A615 (GRADE 60).
 - WALLS (As .12) #5 BARS AT 12" C.C.E.W.
 - FLOOR (As .12) #5 BARS AT 12" C.C.E.W.

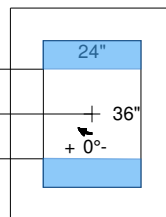
Rim: 961.31' Rim to Invert: 4.81' Slack: 0.72" Sump: 0" Step Position:

Position	Elev	Angle	Ext. (cw)	Pipe	Pipe OD	Connector	Hole	Horz Size	Up ()	Offset
Invert 1	956.5'	90°	26"	15" RCP B WALL	19.5"	Hole 22	22"	22"	-2.25"	0"
Invert 2										
Invert 3										
Invert 4										
Invert 5										
Invert 6										
Invert 7										
Invert 8										

RIGHT-SIDE UP VIEW (int. dimensions) - - SECONDARY POUR

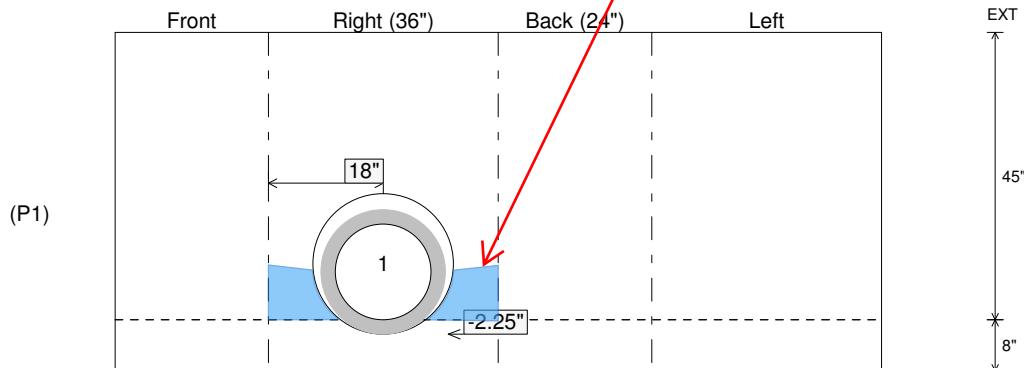


Invert: 1
 Degree: 90°
 Horz: 18"
 Hole: 22"
 Up(): -2.25"



1/2 DIA STORM INVERT CHANNEL

INSIDE WALL DIMENSIONS



Coating (Int):
 Coating (Ext):

Seam Up: Flat
 Seam Dn: n/a

Wall Thickness: 8"
 Floor Height: 8"

Height (Int): 45"
 Height (Ext): 53"

Weight (Net): 5733 lb
 Volume (Net): 1.46cu.yd