

Job Name: 25-3438 - John H. Stigall Drive
 Job Location: Danville, KY
 Contractor: Todd Johnson Contracting, Inc.

Plant: 100

Tech: J. Horsley - F

11/6/2025 4:43:30 PM

PC: C. Goff

Structure ID: F-2

P1 BX2436-08BVF

BOX BASE 8inW, 8inF, Variable Ht F/n

P2) 24" x 36" - CASTING HEIGHT - 12"

P1) 24" x 36" - BOX BASE 8inW, 8inF, Variable Ht F/n - 31"

1) STORM INVERT CHANNEL - 1/2 HEIGHT

1) CASTING - HOE 525 LV SET (F/G/H)

1) 24" x 36" - Conseal CS-102 1.00"

2) Hole - 22"

0 lb

4049 lb

1440 lb

442 lb

0 lb

0 lb

Structure Total: 5931 lb

Structure Notes:

1. PER ASTM C913 SPECIFICATIONS.
2. CONCRETE = 4,000 PSI AT 28 DAYS.
3. NO STEPS AND NO INVERT CHANNEL.
4. CASTING BY ICAST (HOE 525 LV SET (F/G/H)).

REINFORCING PER ASTM A615 (GRADE 60).

- WALLS (As .12) #5 BARS AT 12" C.C.E.W.
- FLOOR (As .12) #5 BARS AT 12" C.C.E.W.

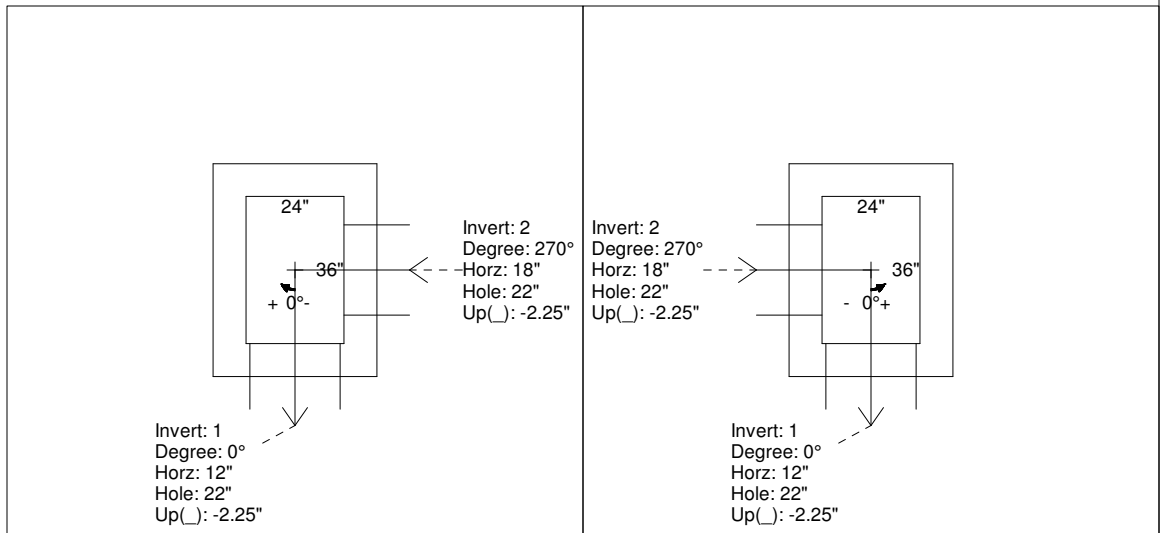
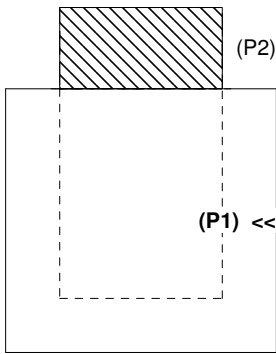
**SECONDARY POUR
 REQUIRED
 SEE SHEET P1A**

Rim: 960.34' Rim to Invert: 3.59' Slack: 0.08" Sump: 0" Step Position:

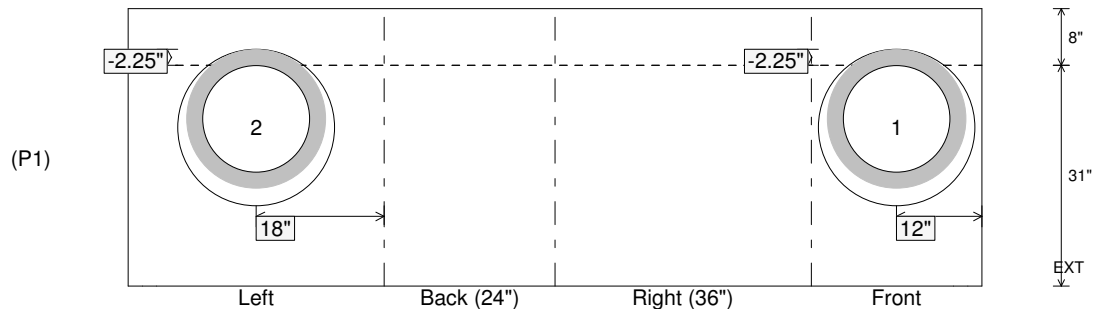
Position	Elev	Angle	Ext. (cw)	Pipe	Pipe OD	Connector	Hole	Horz Size	Up (↓)	Offset
Invert 1	956.75'	0°	20"	15" RCP B WALL	19.5"	Hole 22	22"	22"	-2.25"	0"
Invert 2	956.75'	270°	26"	15" RCP B WALL	19.5"	Hole 22	22"	22"	-2.25"	0"
Invert 3										
Invert 4										
Invert 5										
Invert 6										
Invert 7										
Invert 8										

RIGHT-SIDE UP VIEW (int. dimensions)

UPSIDE-DOWN VIEW (int. dimensions)



INSIDE WALL DIMENSIONS



Coating (Int):
 Coating (Ext):

Seam Up: Flat
 Seam Dn: n/a

Wall Thickness: 8"
 Floor Height: 8"

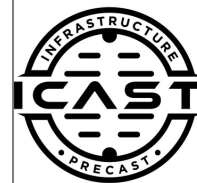
Height (Int): 31"
 Height (Ext): 39"

Weight (Net): 4049 lb
 Volume (Net): 1.03cu.yd

Job Name: 25-3438 - John H. Stigall Drive
 Job Location: Danville, KY
 Contractor: Todd Johnson Contracting, Inc.

Plant: 100
 11/6/2025 4:37:36 PM

Tech: J. Horsley - F
 PC: C. Goff



Structure ID: F-2

P1A STORMINVERT12

STORM INVERT CHANNEL 1/2 HEIGHT

- P2) 24" x 36" - CASTING HEIGHT - 12"
 P1) 24" x 36" - BOX BASE 8inW, 8inF, Variable Ht F/n - 31"
1) STORM INVERT CHANNEL - 1/2 HEIGHT
 1) CASTING - HOE 525 LV SET (F/G/H)
 1) 24" x 36" - Conseal CS-102 1.00"
 2) Hole - 22"

0 lb
 4049 lb
 1440 lb
 442 lb
 0 lb
 0 lb

 Structure Total: 5931 lb

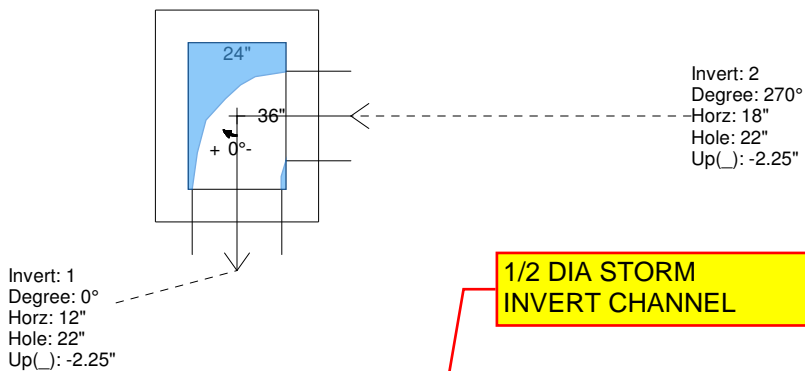
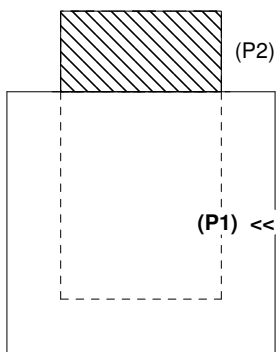
- Structure Notes:**
 1. PER ASTM C913 SPECIFICATIONS.
 2. CONCRETE = 4,000 PSI AT 28 DAYS.
 3. NO STEPS AND NO INVERT CHANNEL.
 4. CASTING BY ICAST (HOE 525 LV SET (F/G/H)).

REINFORCING PER ASTM A615 (GRADE 60).
 - WALLS (As .12) #5 BARS AT 12" C.C.E.W.
 - FLOOR (As .12) #5 BARS AT 12" C.C.E.W.

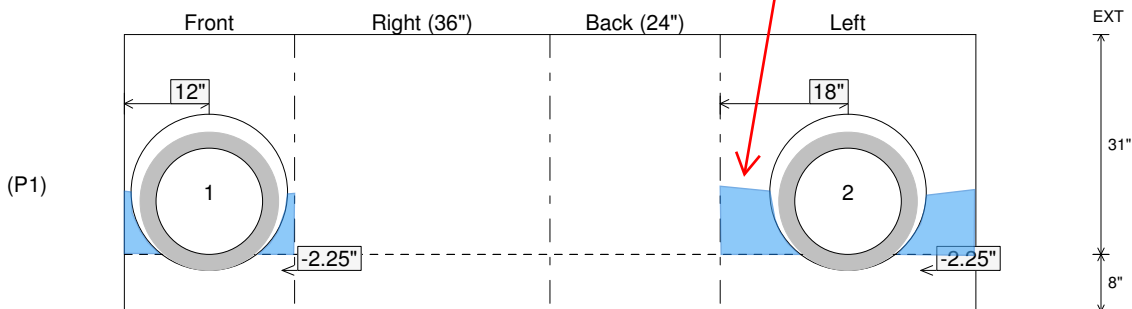
Rim: 960.34' Rim to Invert: 3.59' Slack: 0.08" Sump: 0" Step Position:

Position	Elev	Angle	Ext. (cw)	Pipe	Pipe OD	Connector	Hole	Horz Size	Up ()	Offset
Invert 1	956.75'	0°	20"	15" RCP B WALL	19.5"	Hole 22	22"	22"	-2.25"	0"
Invert 2	956.75'	270°	26"	15" RCP B WALL	19.5"	Hole 22	22"	22"	-2.25"	0"
Invert 3										
Invert 4										
Invert 5										
Invert 6										
Invert 7										
Invert 8										

RIGHT-SIDE UP VIEW (int. dimensions) - - SECONDARY POUR



INSIDE WALL DIMENSIONS



Coating (Int):
 Coating (Ext):

Seam Up: Flat
 Seam Dn: n/a

Wall Thickness: 8"
 Floor Height: 8"

Height (Int): 31"
 Height (Ext): 39"

Weight (Net): 4049 lb
 Volume (Net): 1.03cu.yd