

Job Name: 25-3438 - John H. Stigall Drive  
 Job Location: Danville, KY  
 Contractor: Todd Johnson Contracting, Inc.

Plant: 100

Tech: J. Horsley - F

11/6/2025 5:42:18 PM

PC: C. Goff

**Structure ID: B-1**

**P2 MH048LD12-24X36RECT**

**MH FLAT TOP w/24"x36" Hole F/G**

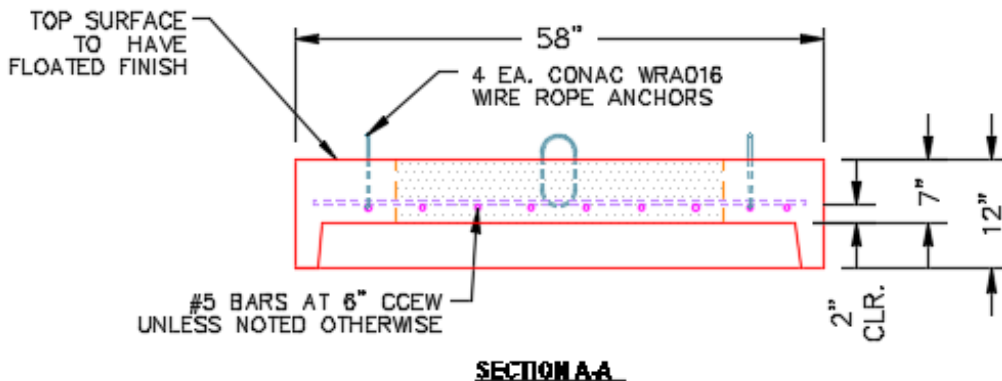
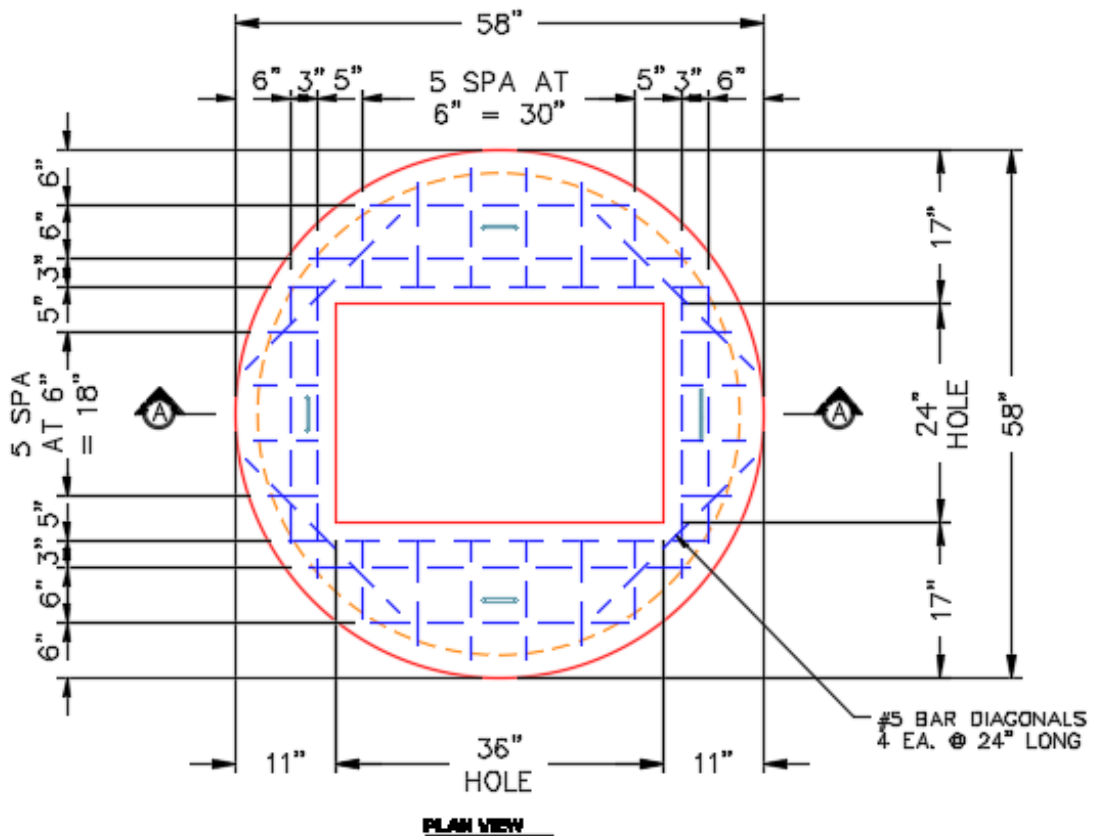
- P3) 24" x 36" - CASTING HEIGHT - 12"
- P2) 48" - MH FLAT TOP w/24"x36" Hole F/G - 12"
- P1) 48" - MH BASE Custom Ht T/n - 39"
- 1) STORM INVERT CHANNEL - 1/2 HEIGHT
- 1) CASTING - HOE 525 LV SET (F/G/H)
- 1) 48" - Conseal CS-102 1.00"
- 1) 24" x 36" - Conseal CS-102 1.00"
- 2) Hole - 22
- 3) MH Step ML-10-TDS-NCR - 10"

0 lb  
 1300 lb  
 3725 lb  
 1440 lb  
 442 lb  
 0 lb  
 0 lb  
 0 lb  
 0 lb  
 0 lb  
 Structure Total: 6907 lb

Structure Notes:

1. PER ASTM C478 SPECIFICATIONS.
2. CONCRETE = 4,000 PSI AT 28 DAYS.
3. NO STEPS AND NO INVERT CHANNEL.
4. CASTING BY ICAST (HOE 525 LV SET (F/G/H)).

REINFORCING PER ASTM A615 (GRADE 60).  
 - TOP SLAB (As .62) #5 BARS AT 6" C.C.E.W..  
 - RISER/WALLS (As .12)  
 - FLOOR (As .31) #5 BARS AT 12" C.C.E.W.



Coating (Int):  
 Coating (Ext):

Seam Up: Flat  
 Seam Dn: Groove

Wall Thickness: 5"

Height (Ext): 12"

Weight (Net): 1300 lb  
 Volume (Net): 0.46cu.yd