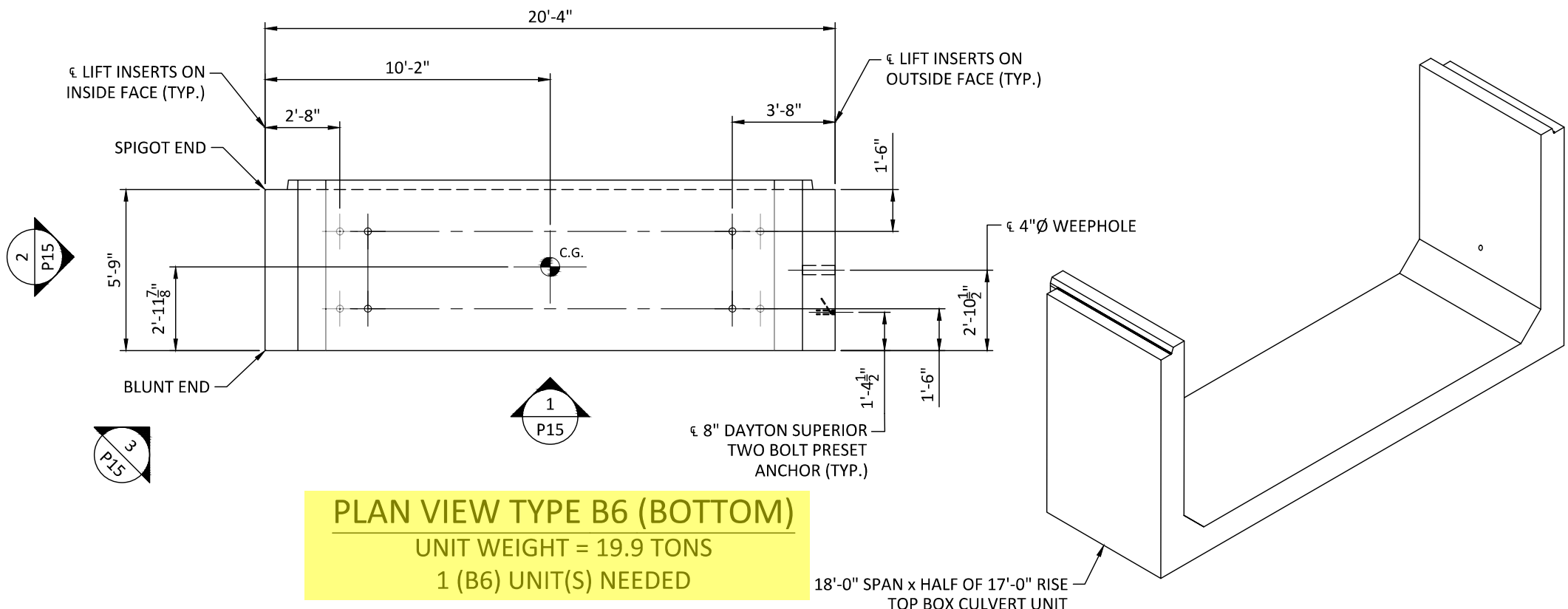
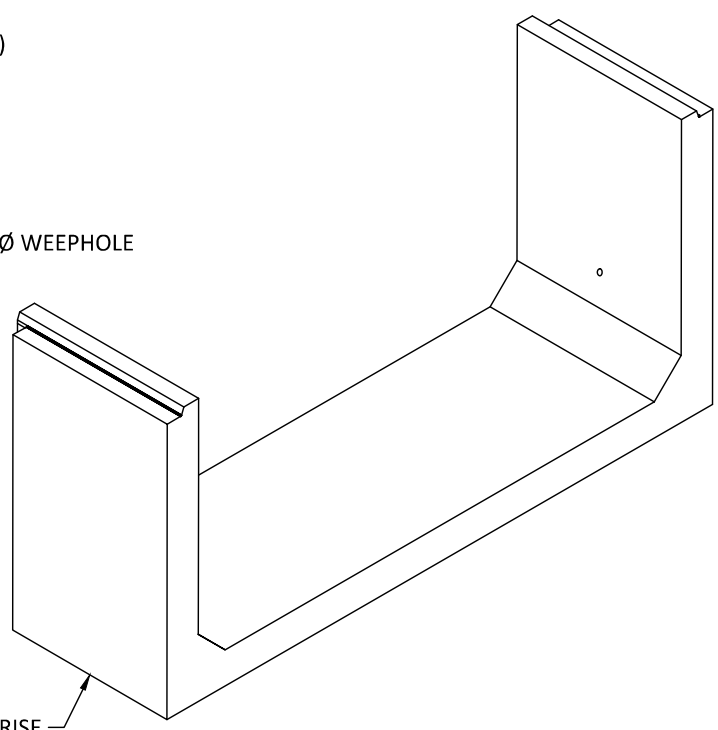


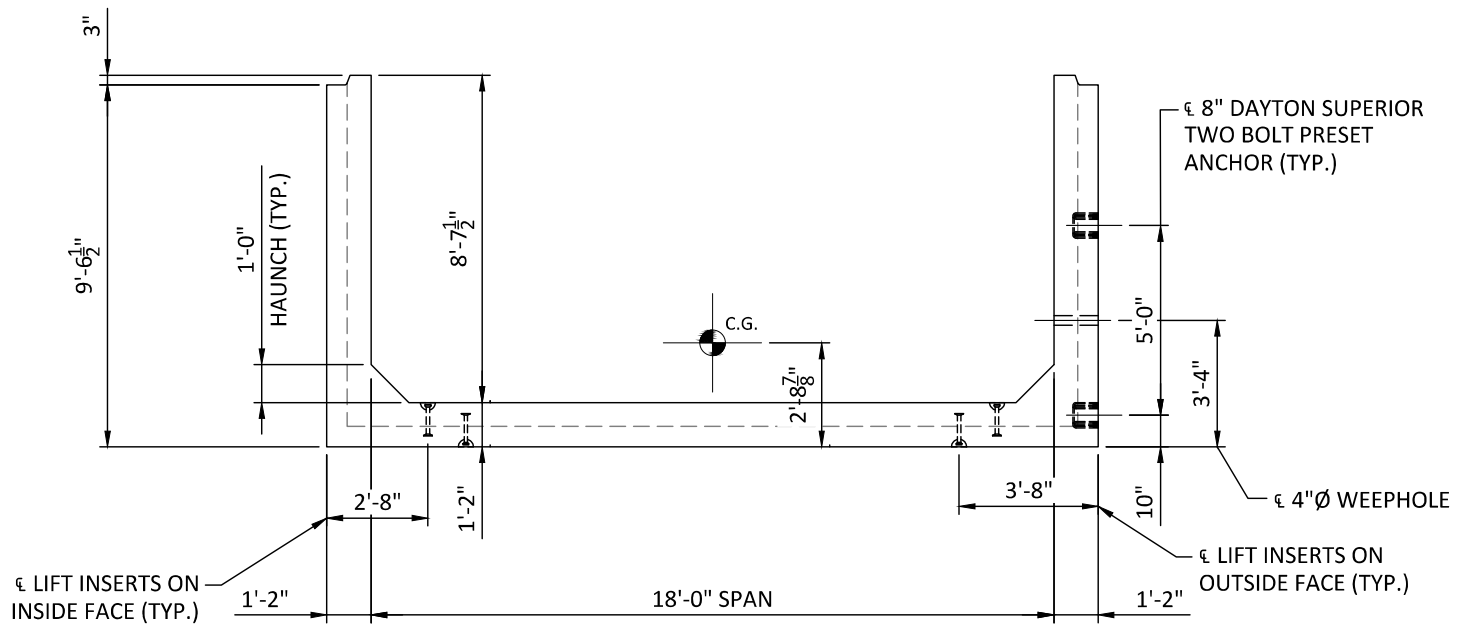
**25-3437 - TDOT Jackson CO CNZ250
SR 53 CULVERT REPLACEMENT
B6 - 1 TOTAL REQUIRED**



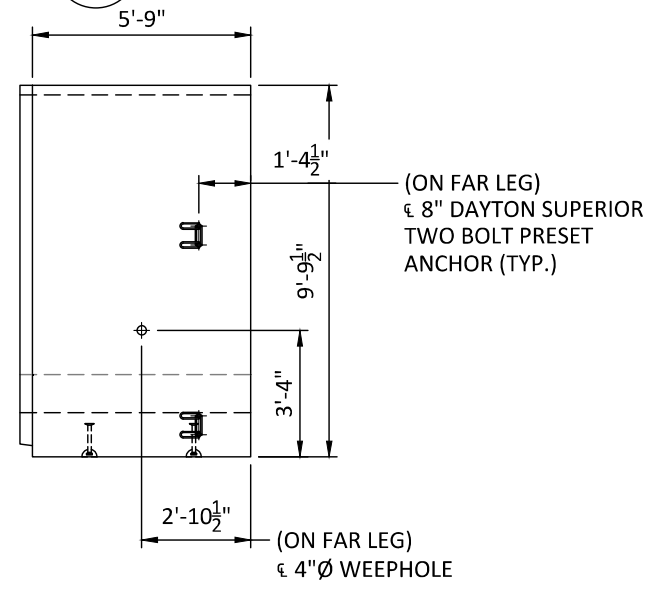
PLAN VIEW TYPE B6 (BOTTOM)
UNIT WEIGHT = 19.9 TONS
1 (B6) UNIT(S) NEEDED



ISOMETRIC
NOT TO SCALE



ELEVATION
END VIEW



ELEVATION
SIDE VIEW

DESIGN NOTES

1. F'c = 5,000 PSI.
2. SEE SHEET P4 FOR UNIT STEEL REINFORCING
3. ANY REINFORCING CUT AROUND OPENINGS OR INSERTS MUST BE REPLACED WITH EQUIVALENT
4. UNIT MAY NOT HANG LEVEL, ADJUST LIFTING CABLES AS NECESSARY



APPROVED
1/15/2026
Red A. Krumpal
ENGR. DIRECTOR, STRUCTURES

FOR APPROVAL

DATE	DESCRIPTION	ENG	STATE PROJECT # 44S053-M3-005	PIN NO. 136243.00	BRIDGE ID # 44SR0530017
7					
6					
5					
4					
3					
2					
1	1/14/26	JJC	NO CHANGES THIS SHEET	LOCALE: JACKSON COUNTY	STATE: TN

SR 53 CULVERT REPLACEMENT



981 W 7TH STREET
BEAVER DAM, KY 42320
270.363.2238



P.O. BOX 351
BELLBROOK, OH 45305
800.241.0925

PROJECT NUMBER: 25-429
DATE: 12/17/2025
DESIGNED BY: KDK
DRAWN BY: SP
CHECKED BY: TEN

P15

