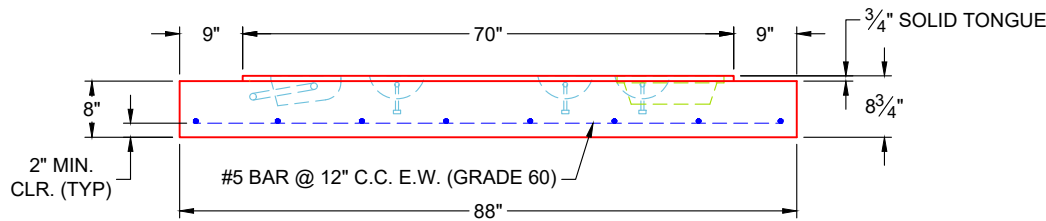
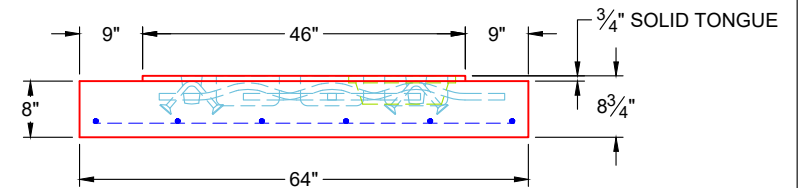


**PLAN VIEW  
(RIGHT SIDE UP)**



**FRONT VIEW  
(RIGHT SIDE UP)**



**SIDE VIEW  
(RIGHT SIDE UP)**

**GENERAL NOTES:**

1. PER TO ASTM C-913 (LATEST REVISION) SPECIFICATIONS
2. CONCRETE: 5,000 PSI AT 28 DAYS
3. REINFORCEMENT: #5 BAR @ 12" C.C. E.W. (GRADE 60) - 2" MIN. REBAR CLEARANCE (TYP)
4. WEIGHT: 3,990 LBS
5. PA INSERT CO. SUMP PAN SUPPLIED BY ICAST - TO BE CAST INTO FLOOR
6. 3 EA. M.A. INDUSTRIES PULLING IRONS WITH POCKETS SUPPLIED BY ICAST - TO BE CAST INTO FLOOR

**PRODUCTION WORK ORDER**

PRODUCT I.D.: CVBS

DESCRIPTION: 64" X 88" SEPARATE BASE SLAB, 8" HT. W/ 3/4" SOLID TONGUE



**QUALITY CONTROL CHECKLIST**

- ALL DIMENSIONS CORRECT.
- LIFTERS INSTALLED.
- CORRECT THICKNESS.
- REINFORCING CORRECT.
- FINISH ON SLAB SURFACE UNIFORM.
- OUTSIDE TOP EDGE TROWELLED.
- SOLID TONGUE JOINT INSTALLED.

PRODUCT VIEW: RIGHT SIDE UP

CUSTOMER: GARDNER ELECTRIC SERVICE

PLANT: BEAVER DAM, KY

PROJECT: CUSTOM ELECTRICAL VAULT

WEIGHT: 3,990 LBS

STRUCTURE: 2-53432 (ELECTRICAL VAULT)

TOP SECTION JOINT: N / A

ORDER NO: 25-3432

BASE SECTION JOINT: SOLID TONGUE

PE: J.H. ROSS

DRAWING: K. CARDWELL

QC CHECK INITIALS:

DATE: 11/11/25

SCALE: NTS

PG. 1 OF 1

**Job Number:**

25-3432

**Job Name:**

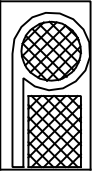
Custom Electrical Vault

**Structure:**

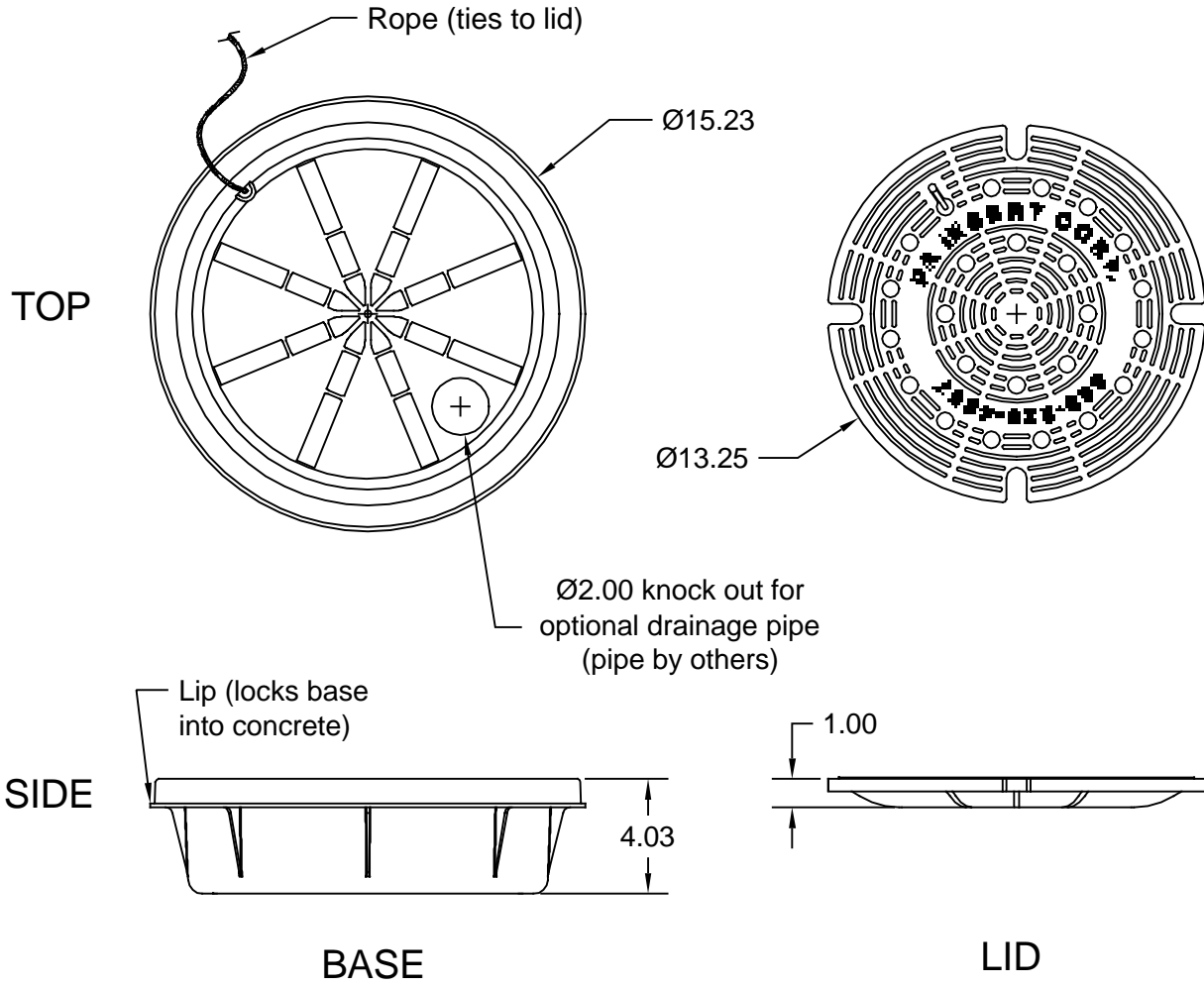
2-53432 (Electrical Vault)

**Note:**

PA Insert Co. Sump Pan Supplied By  
iCast To Be Cast Into Base Floor

Fax to:	Customer	Approved/Notes		<b>PA Insert Corp</b> PO Box 199 Spring City PA 19475 tel: 610-948-9688 fax: 610-948-9750  email: sales@pennsylvaniainsert.com web: www.pennsylvaniainsert.com	
Fax#	Project				
From	Job#	Ship Date			
Date	PA Insert Quote/Order#	Page _____ of _____			

# NEW PLASTIC SUMP

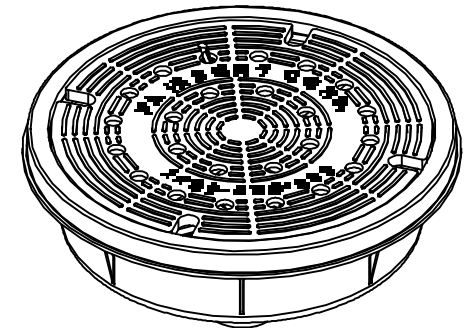


**BASE:**

- Material - Propylene
- Rope connects to lid
- Lip positively locks base into concrete
- 2" knock out hole in base for optional drain pipe (drain pipe by others)

**LID:**

- Material - 30% Glass filled Propylene
- Top surface has raised areas to provide traction
- Ribbed construction provides increased strength and rigidity



**3D VIEW**

**Job Number:**

25-3432

**Job Name:**

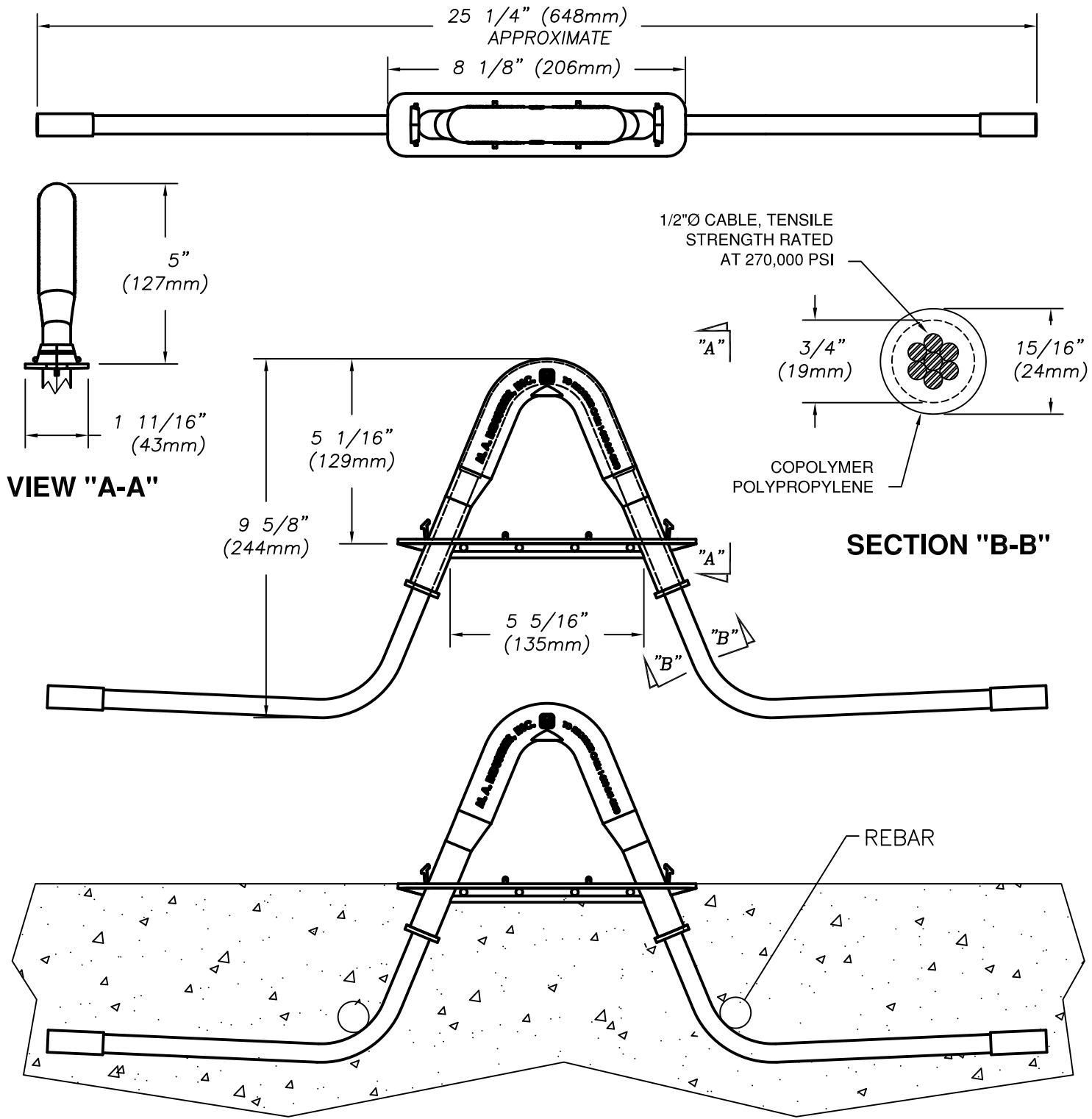
Custom Electrical Vault

**Structure:**

2-53432 (Electrical Vault)

**Note:**

3 Ea. M.A. Industries Pulling Irons  
With Pockets Supplied By iCast To  
Be Cast Into Base Floor

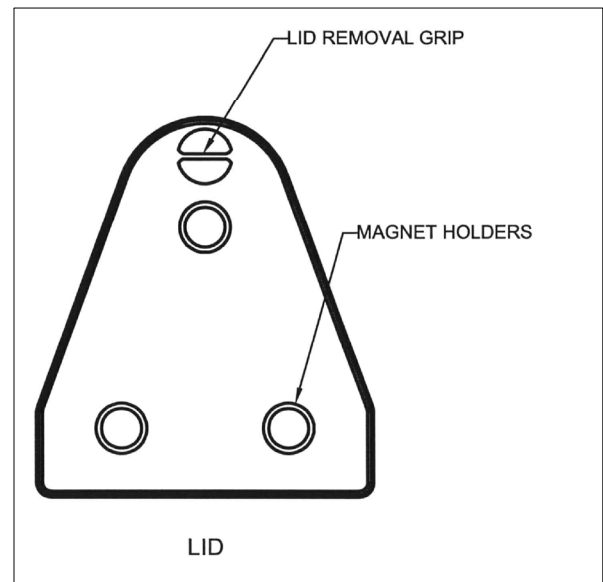
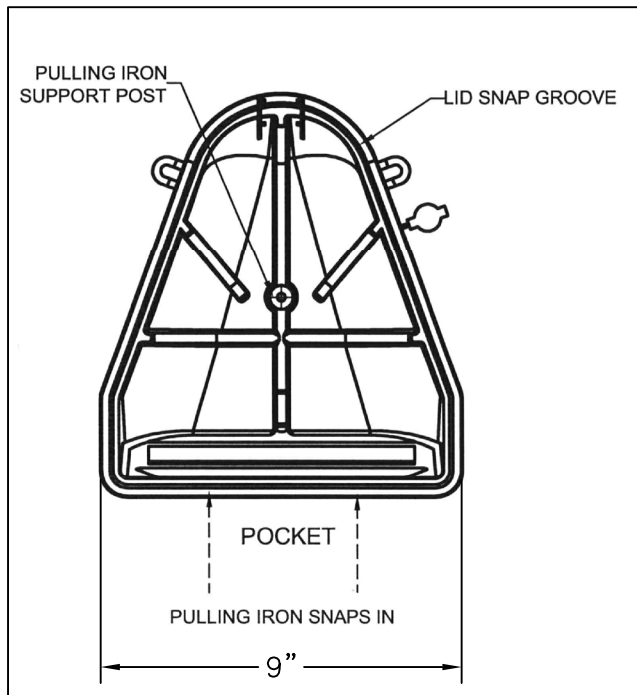
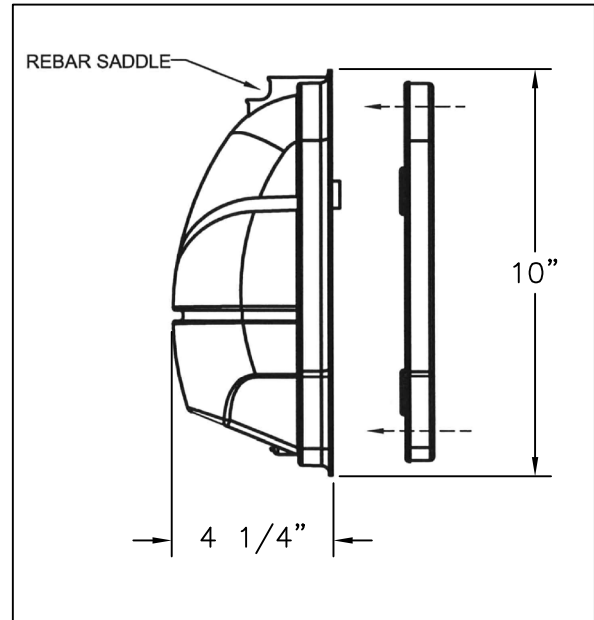
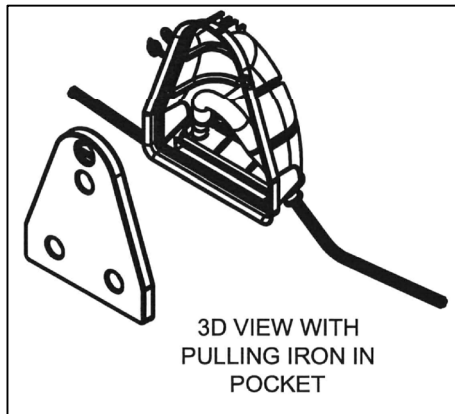


**Lifting capacity rated at 7500 lbs. per Pulling Iron.**

**Pulling Iron must be securely attached to the steel reinforcement cage as depicted above.**



**M . A . I N D U S T R I E S , I N C .**



- PULLING IRON SNAPS SECURELY INTO POCKET
- SUPPORT POST KEEPS PULLING IRON IN POSITION
- LID SNAPS SECURELY INTO POCKET
- LID HOLDS MAGNETS

**M . A . I N D U S T R I E S , I N C .**

