

Job Name: 25-3431 Plano Bridleton Farms Storm
 Job Location: Bowling Green, KY
 Contractor: J & J Concrete & Excavating, LLC

Plant: Beaver Dam

Tech: C.Russ

10/30/2025 12:17:40 PM

PC: E.Bradley



Structure ID: ST-F2

P2 MH048LD06SP

MH FLAT TOP SPEC. HT. (6") w/24" ECC Hole

- P3) 24" - CASTING HEIGHT - 7"
- P2) 48" - MH FLAT TOP SPEC. HT. (6") w/24" ECC Hole - 6"
- P1) 48" - MH BASE Custom Ht - 30"
- 1) CASTING - HOE MC-375 F/C Storm
- 1) 48" - SGL 1"x14.5' Butyl (2x)
- 2) DOGHOUSE INVRTD - 34"x30"
- 2) MH Step ML-10-TDS-NCR - 10"

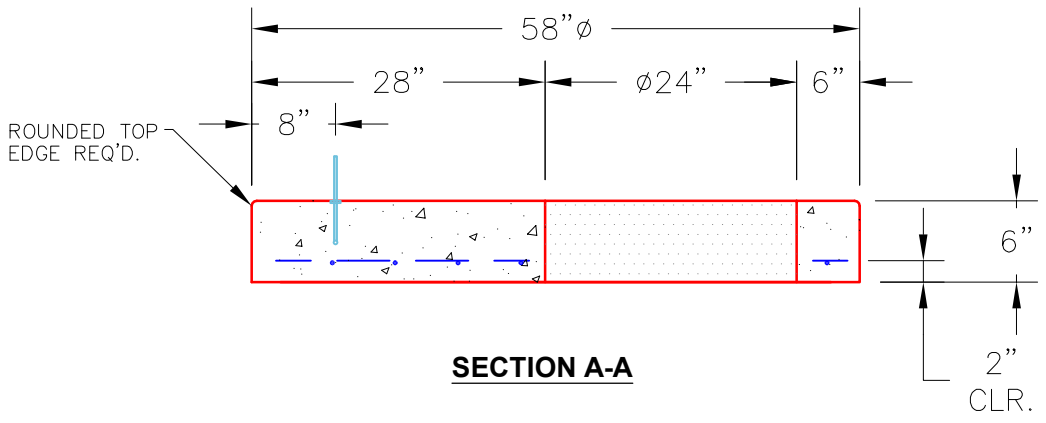
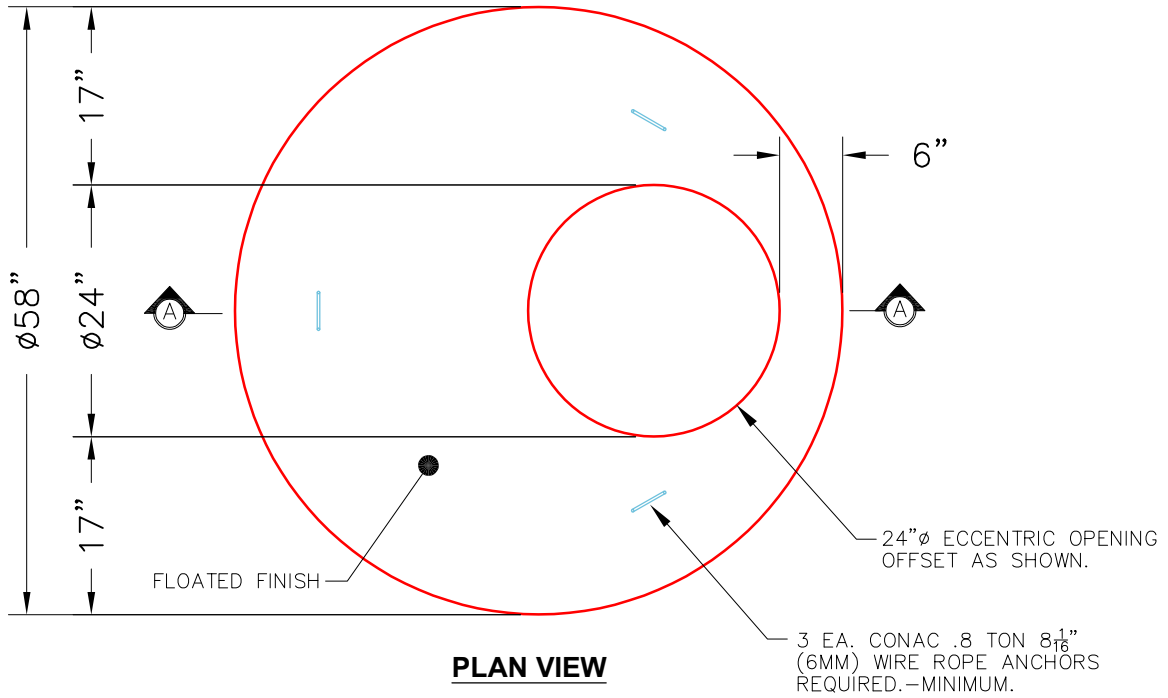
0 lb
 1102 lb
 2593 lb
 271 lb
 0 lb
 0 lb
 0 lb

 3967 lb

Structure Total:

Structure Notes:

1. PER ASTM C478 SPECIFICATIONS.
2. CONCRETE = 4,000 PSI AT 28 DAYS.
3. HOE MC-375 F/C BY ICAST
4. REINFORCING PER ASTM A615 (GRADE 60).
 - TOP SLAB (As .62) #5 BARS AT 6" C.C.E.W..
 - RISER/WALLS (As .12)#5 BARS AT 12" C.C.E.W.
 - FLOOR (As .31) #5 BARS AT 12" C.C.E.W.



Coating (Int): Coating (Ext):	Seam Up: Flat Seam Dn: Flat	Wall Thickness: 5"	Height (Ext): 6"	Weight (Net): 1102 lb Volume (Net): 0.28cu.yd
----------------------------------	--------------------------------	--------------------	------------------	--