

Job Name: 25-3431 Plano Bridleton Farms Storm  
 Job Location: Bowling Green, KY  
 Contractor: J & J Concrete & Excavating, LLC

Plant: Beaver Dam  
 10/30/2025 11:31:53 AM

Tech: C.Russ  
 PC: E.Bradley



**Structure ID: ST-D2**  
**P1 MH048BA30 MH BASE**

- P4) 24" - CASTING HEIGHT - 7"
- P3) 24" - GRADE RING - 4"
- P2) 48" - MH FLAT TOP w/ 24" ECC Hole - 12"
- P1) 48" - MH BASE - 30"
- 1) CASTING - HOE MC-375 F/C Storm
- 1) 48" - SGL 1"x14.5' Butyl (2x)
- 1) Hole - 24
- 1) Hole - 20
- 3) MH Step ML-10-TDS-NCR - 10"

- Structure Notes:**
1. PER ASTM C478 SPECIFICATIONS.
  2. CONCRETE = 4,000 PSI AT 28 DAYS.
  3. HOE MC-375 F/C BY ICAST
  4. REINFORCING PER ASTM A615 (GRADE 60).
    - TOP SLAB (As .62) #5 BARS AT 6" C.C.E.W..
    - RISER/WALLS (As .12)
    - FLOOR (As .31) #5 BARS AT 12" C.C.E.W.

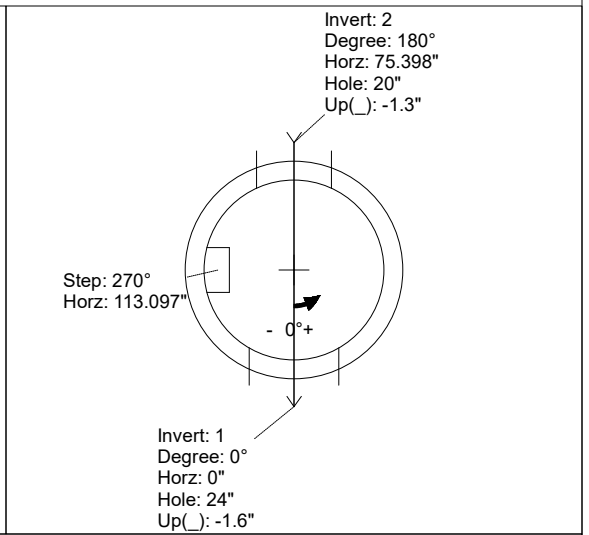
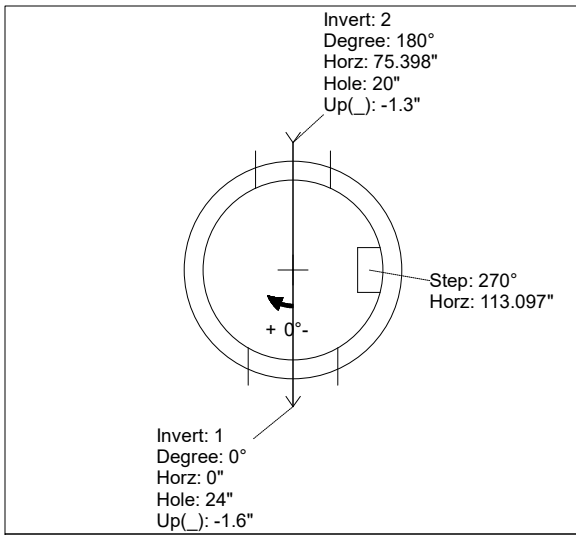
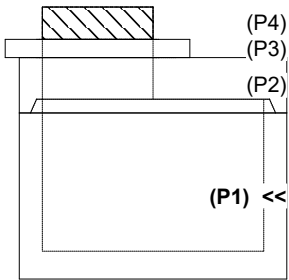
Structure Total: 5195 lb

Rim: 607.11' Rim to Invert: 4.64' Slack: 2.68" Sump: 0" Step Position: 270

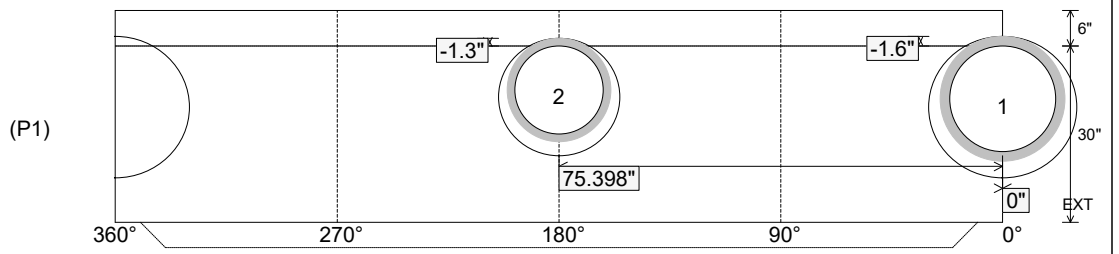
Position	Elev	Angle	Ext. (cw)	Pipe	Pipe OD	Connector	Hole	Horz Size	Up ( )	Offset
Invert 1	602.47'	0°	0"	18" HDPE	21.2"	Hole 24	24"	25.133"	-1.6"	0"
Invert 2	602.47'	180°	91.106"	15" HDPE	17.6"	Hole 20	20"	20.629"	-1.3"	0"
Invert 3										
Invert 4										
Invert 5										
Invert 6										
Invert 7										
Invert 8										

RIGHT-SIDE UP VIEW (int. dimensions)

UPSIDE-DOWN VIEW (int. dimensions)



INSIDE WALL DIMENSIONS



Coating (Int): Coating (Ext):	Seam Up: Tongue Seam Dn: n/a	Wall Thickness: 5" Floor Height: 6"	Height (Int): 30" Height (Ext): 36"	Weight (Net): 3093 lb Volume (Net): 0.79cu.yd
----------------------------------	---------------------------------	--	--	--