



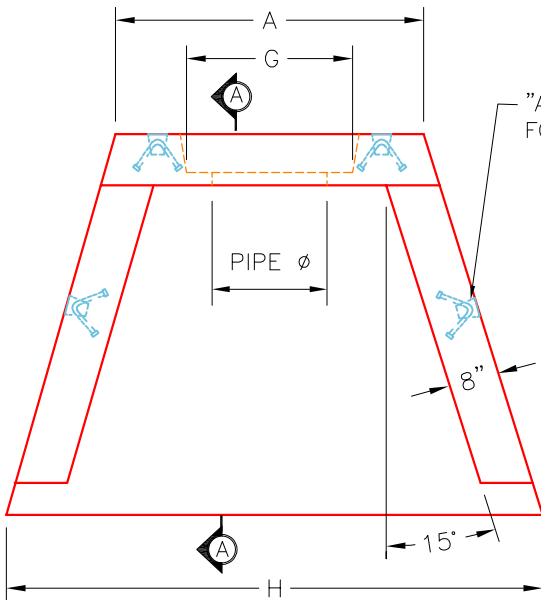
**Structure ID: 16-53431**

**P1 HWSF24F**

**24" - HW SLOPED & FLARED w/FLAT BOTTOM**

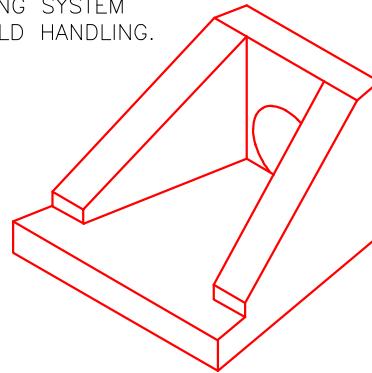
DIMENSIONS

| PIPE $\phi$ | A     | B     | C      | D  | E     | F  | G      | H     | WEIGHT      |
|-------------|-------|-------|--------|----|-------|----|--------|-------|-------------|
| 24"         | 3'-6" | 4'-4" | 2'-10" | 8" | 5'-0" | 4" | 2'-10" | 6'-0" | .3,711 LBS. |

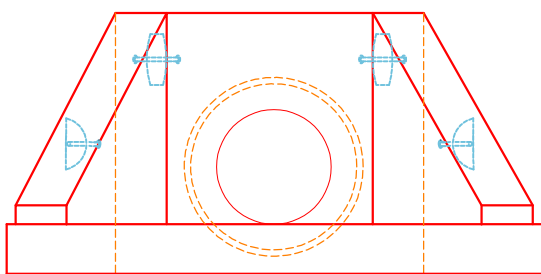


**PLAN VIEW**

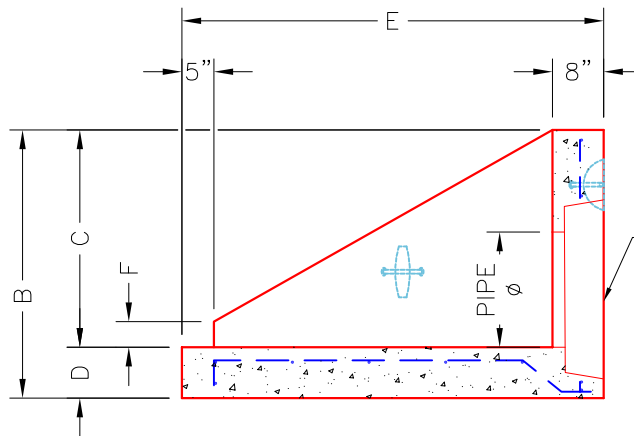
"A-ANCHOR" LIFTING SYSTEM FOR PLANT & FIELD HANDLING.



**ISOMETRIC VIEW**



**FRONT ELEVATION**



**SECTION A-A**

STEPPED HOLE FORMER FOR 15" PIPE  $\phi$ . (PIPE O.D. + 3"-4")

**NOTES:**

1. CONCRETE: KYTC APPROVED.
2. REINFORCING: #4 BAR @ 12" C/C E.W.-GRADE 60, (WITH 2" CONCRETE COVER MINIMUM)
3. REINFORCING BARS TO BE TACK WELDED OR TIED.
4. PIPE AND LIFTING ANCHOR POCKETS TO BE GROUTED WITH KYTC APPROVED NON-SHRINK GROUT.
5. DRAWING TO BE USED IN CONJUNCTION WITH KYTC STD. DRAWING RDH-020-03 AND THE STANDARD SPECIFICATIONS FOR ROAD AND BRIDGE CONSTRUCTION.
6.  $\frac{3}{4}$ " CHAMFER ON ALL EXPOSED EDGES.
7. PREFORMED STEPPED HOLE SIZED AS PER O.D. OF PIPE + 3"-4".