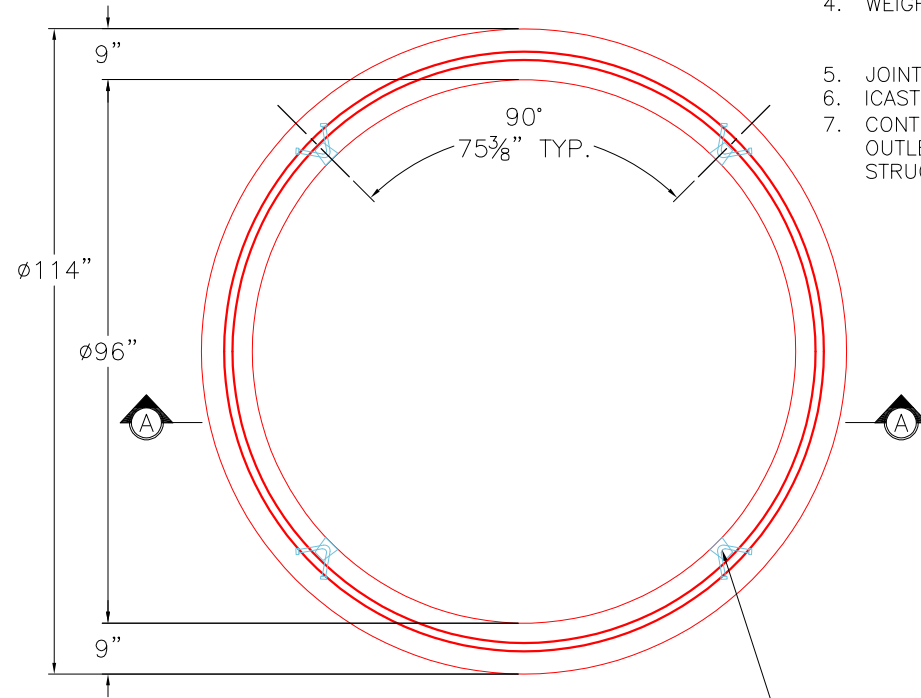


GENERAL NOTES:

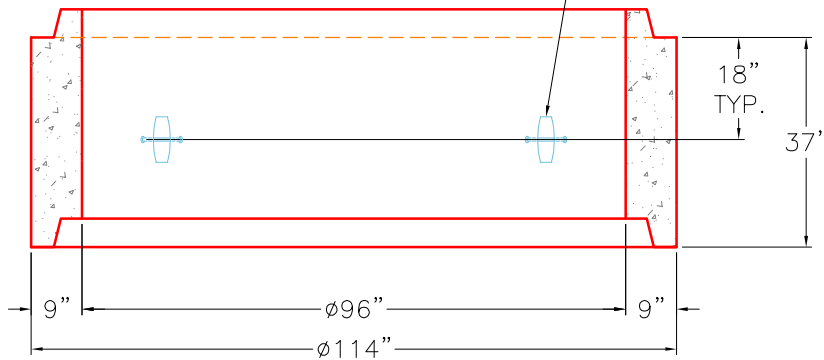
1. MANUFACTURED TO ASTM C-478 (LATEST REVISION).
2. CONCRETE 5,000 PSI AT 28 DAYS.
3. REINFORCING: WALLS - WWF AREA 0.24
FLOOR - AREA 0.27 - #5 BAR @ 12" C/C TOP AND BOTTOM MAT.
4. WEIGHT: TOTAL - 17,113 LBS.
FIRST POUR - 9,216 LBS
SECOND POUR - 7,897 LBS
5. JOINT SEAL: CONCRETE SEALANTS INC. CS-102.
6. ICAST TO INSTALL INTERNAL BRACKETS.
7. CONTECH'S LOGO AS WELL AS THE INLETS AND OUTLETS MUST BE STENCILED ONTO THE STRUCTURE.




TOP VIEW

FIRST POUR DRAWING

4 EA. CONAC 6CA14 ANCHORS REQUIRED FOR HANDLING.



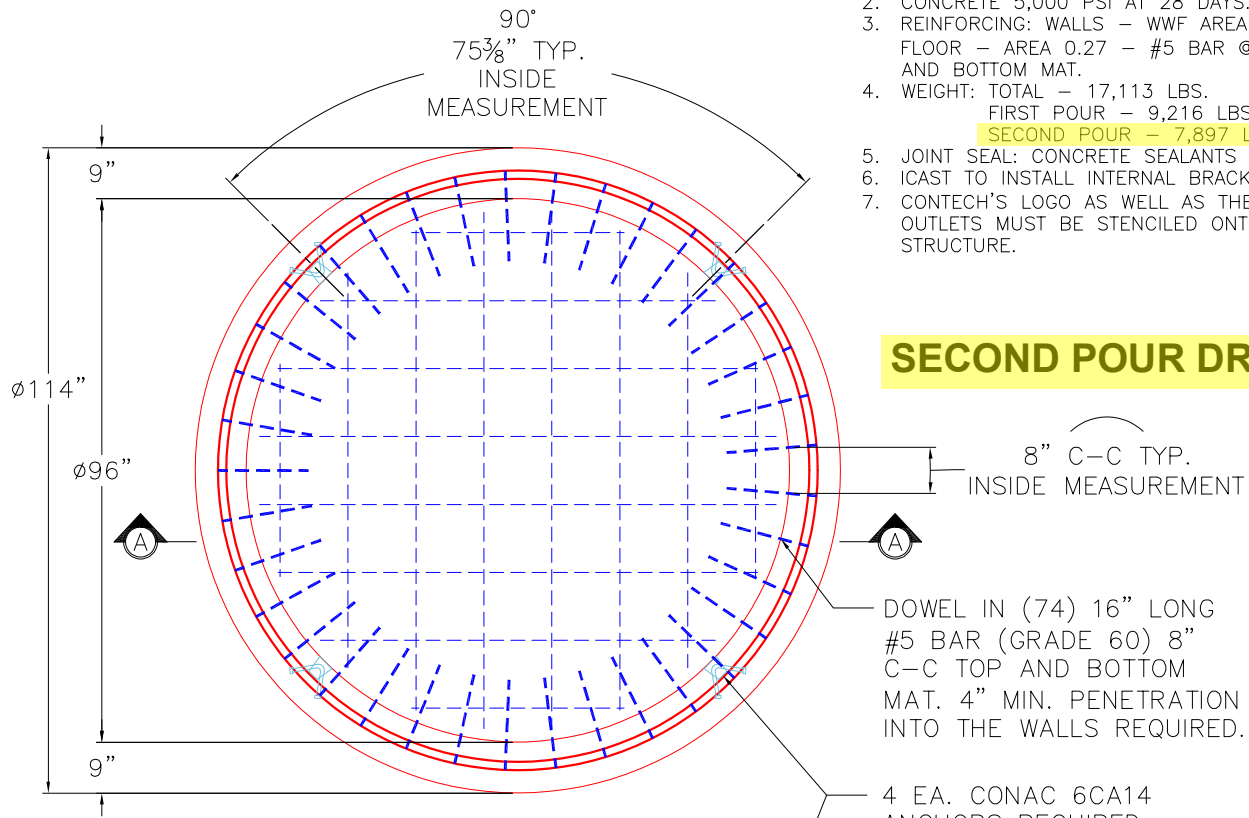
SECTION A-A

PRODUCTION WORK ORDER		PRODUCT I.D.: MH096BAVF	DESCRIPTION: 96"Ø MONOBASE, 37" EXTERNAL HEIGHT W/ 13" THICK FLOOR	
	QUALITY CONTROL CHECKLIST	PRODUCT VIEW: RIGHT SIDE UP	CUSTOMER: CONTECH ENGINEERED SOLUTIONS	
	<input type="checkbox"/> ALL DIMENSIONS CORRECT.	PLANT: BEAVER DAM, KY.	PROJECT: 842654 THE VILLAGE AT LEMONS MILL	
	<input type="checkbox"/> LIFTERS INSTALLED.	WEIGHT: 17,113 LBS	STRUCTURE: 15-CS-8	
	<input type="checkbox"/> HOLE LOCATION CORRECT.	TOP SECTION JOINT: N/A	QUOTE/SALES ORDER NO: 25-3424	
	<input type="checkbox"/> REINFORCING CORRECT.	BASE SECTION JOINT: N/A	PC: T. SEKULA	DRAWING: J. COPPAGE
<input type="checkbox"/> FINISH ON SURFACE UNIFORM.	QC CHECK INITIALS:	DATE: 10/17/25	SCALE: NTS	PG. 1 of 1
<input type="checkbox"/> OUTSIDE TOP EDGE TROWELLED.				
<input type="checkbox"/> GROOVE JOINT INSTALLED.				

GENERAL NOTES:

1. MANUFACTURED TO ASTM C-478 (LATEST REVISION).
2. CONCRETE 5,000 PSI AT 28 DAYS.
3. REINFORCING: WALLS - WWF AREA 0.24
FLOOR - AREA 0.27 - #5 BAR @ 12" C/C TOP AND BOTTOM MAT.
4. WEIGHT: TOTAL - 17,113 LBS.
FIRST POUR - 9,216 LBS
SECOND POUR - 7,897 LBS
5. JOINT SEAL: CONCRETE SEALANTS INC. CS-102.
6. ICAST TO INSTALL INTERNAL BRACKETS.
7. CONTECH'S LOGO AS WELL AS THE INLETS AND OUTLETS MUST BE STENCILED ONTO THE STRUCTURE.

SECOND POUR DRAWING

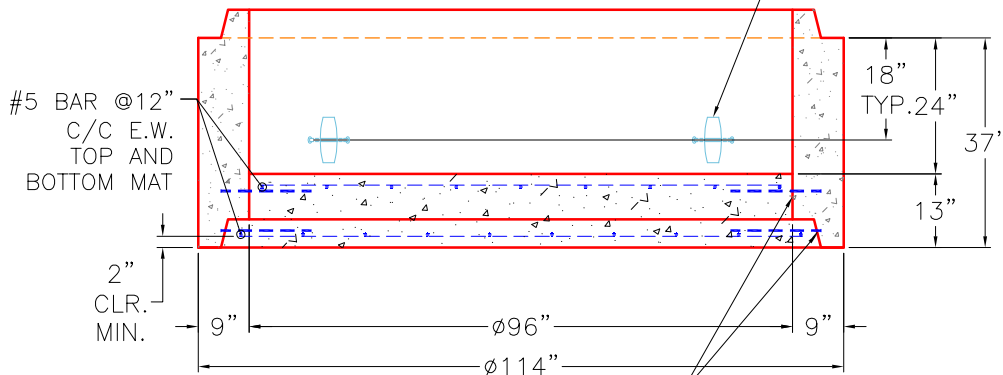


TOP VIEW

8" C-C TYP. INSIDE MEASUREMENT

DOWEL IN (74) 16" LONG #5 BAR (GRADE 60) 8" C-C TOP AND BOTTOM MAT. 4" MIN. PENETRATION INTO THE WALLS REQUIRED.

4 EA. CONAC 6CA14 ANCHORS REQUIRED FOR HANDLING.



SECTION A-A

TWO LAYERS OF CS-231 REQUIRED PRIOR TO POURING THE FLOOR

<p>PRODUCTION WORK ORDER</p>		<p>PRODUCT I.D.: MH096BAVF</p>	<p>DESCRIPTION: 96"Ø MONOBASE, 37" EXTERNAL HEIGHT W/ 13" THICK FLOOR</p>	
	<p>QUALITY CONTROL CHECKLIST</p>	<p>PRODUCT VIEW: RIGHT SIDE UP</p>	<p>CUSTOMER: CONTECH ENGINEERED SOLUTIONS</p>	
	<input type="checkbox"/> ALL DIMENSIONS CORRECT.	<p>PLANT: BEAVER DAM, KY.</p>	<p>PROJECT: 842654 THE VILLAGE AT LEMONS MILL</p>	
	<input type="checkbox"/> LIFTERS INSTALLED.	<p>WEIGHT: 17,113 LBS</p>	<p>STRUCTURE: 15-CS-8</p>	
	<input type="checkbox"/> HOLE LOCATION CORRECT.	<p>TOP SECTION JOINT: N/A</p>	<p>QUOTE/SALES ORDER NO: 25-3424</p>	
	<input type="checkbox"/> REINFORCING CORRECT.	<p>BASE SECTION JOINT: N/A</p>	<p>PC: T. SEKULA</p>	<p>DRAWING: J. COPPAGE</p>
	<input type="checkbox"/> FINISH ON SURFACE UNIFORM.	<p>QC CHECK INITIALS:</p>	<p>DATE: 10/17/25</p>	<p>SCALE: NTS</p>
<input type="checkbox"/> OUTSIDE TOP EDGE TROWELLED.			<p>PG. 1 of 1</p>	
<input type="checkbox"/> GROOVE JOINT INSTALLED.				