

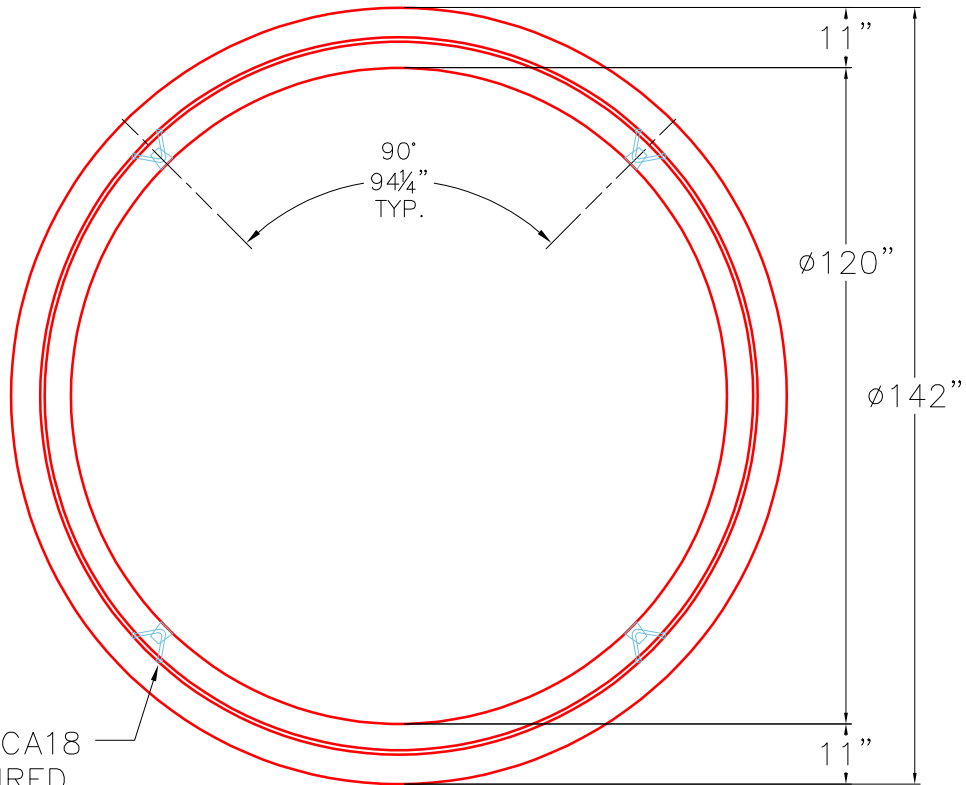
THIS DRAWING IS INTENDED TO BE PRINTED IN COLOR.

FIRST POUR DRAWING

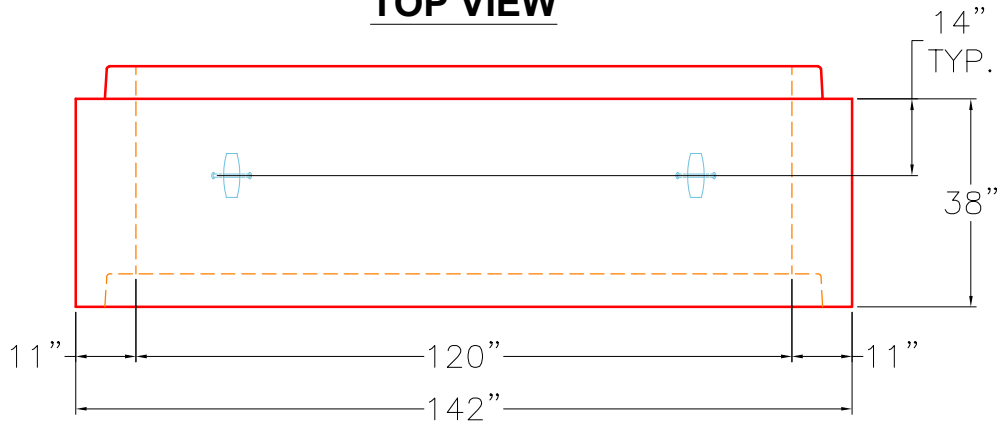
SEE NEXT PAGE (P1B)

GENERAL NOTES:


1. MANUFACTURED TO ASTM C-478 (LATEST REVISION).
2. CONCRETE 5,000 PSI AT 28 DAYS.
3. REINFORCING: TOP AND BOTTOM MAT
#5 BAR @ 8" C-C E.W. (GRADE 60).
4. WEIGHT: 27,721 LBS TOTAL.
FIRST POUR: 14,435 LBS
SECOND POUR: 13,286 LBS



TOP VIEW



FRONT VIEW

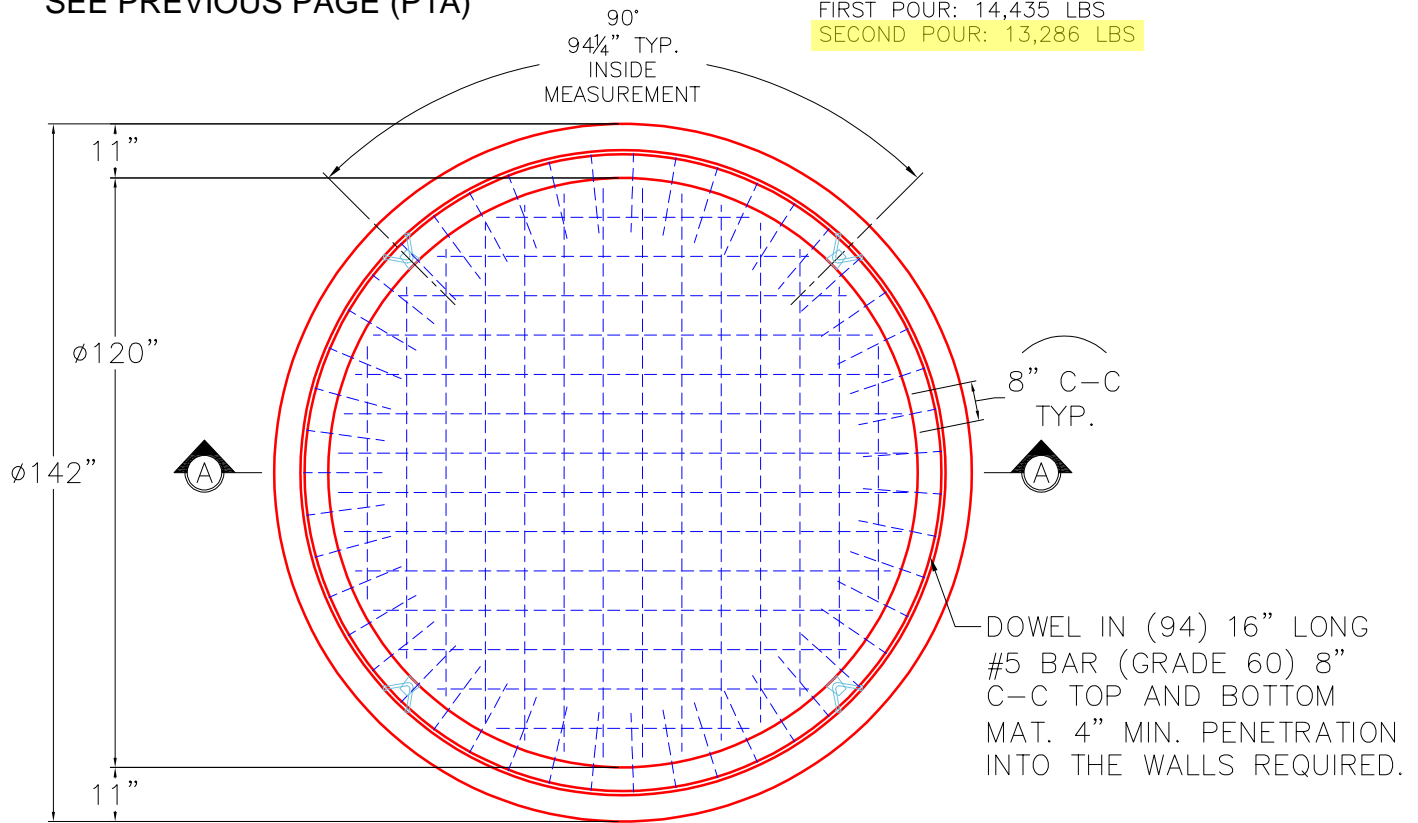
PRODUCTION WORK ORDER		PRODUCT I.D.: MH120BVF	DESCRIPTION: 120"Ø MONOBASE, 38" EXT HEIGHT. FIRST POUR DRAWING	
	QUALITY CONTROL CHECKLIST	PRODUCT VIEW: RIGHT SIDE UP	CUSTOMER: CONTECH ENGINEERING SOLUTIONS	
	<input type="checkbox"/> ALL DIMENSIONS CORRECT.	PLANT: BEAVER DAM, KY.	PROJECT: OBERLIN CAMBY (IN) 866651-10	
	<input type="checkbox"/> LIFTERS INSTALLED.	WEIGHT: 27,721 LBS.	STRUCTURE: 10-CS-10	
	<input type="checkbox"/> CORRECT HEIGHT.	TOP SECTION JOINT: TONGUE	QUOTE/SALES ORDER NO: 25-3423	
	<input type="checkbox"/> REINFORCING CORRECT.	BASE SECTION JOINT: N/A	PC: T. SEKULA	DRAWING: J. COPPAGE
<input type="checkbox"/> FINISH ON SLAB SURFACE UNIFORM.	QC CHECK INITIALS:	DATE: 9/30/25	SCALE: NTS	PG. 1 of 1
<input type="checkbox"/> EDGE CHAMFERED.				
<input type="checkbox"/> JOINT INSTALLED.				

THIS DRAWING IS INTENDED TO BE PRINTED IN COLOR.

GENERAL NOTES:

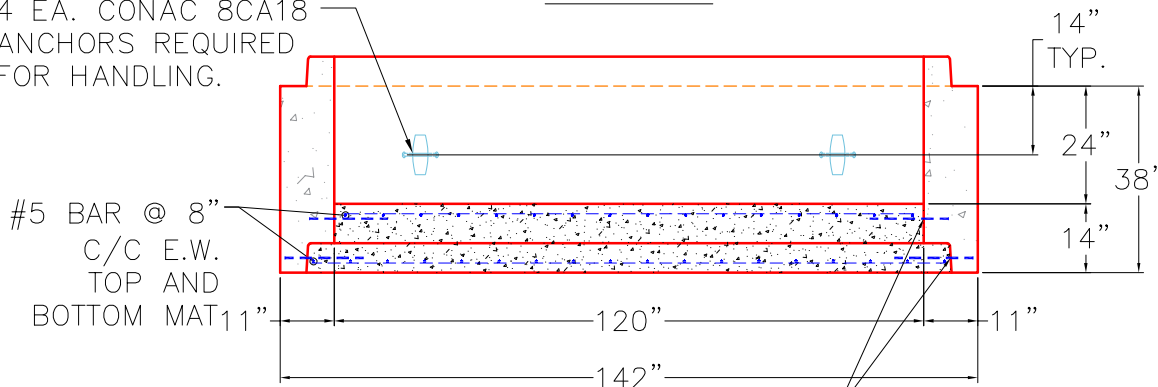
1. MANUFACTURED TO ASTM C-478 (LATEST REVISION).
2. CONCRETE 5,000 PSI AT 28 DAYS.
3. REINFORCING: TOP AND BOTTOM MAT #5 BAR @ 8" C-C E.W. (GRADE 60).
4. WEIGHT: 27,721 LBS TOTAL.
FIRST POUR: 14,435 LBS
SECOND POUR: 13,286 LBS

SECOND POUR DRAWING
SEE PREVIOUS PAGE (P1A)



TOP VIEW

4 EA. CONAC 8CA18 ANCHORS REQUIRED FOR HANDLING.



SECTION A-A

<p>PRODUCTION WORK ORDER</p>		<p>PRODUCT I.D.: MH120BVF</p>	<p>DESCRIPTION: 120"Ø MONOBASE, 24" INT HEIGHT. SECOND POUR DRAWING</p>	
	<p>QUALITY CONTROL CHECKLIST</p>		<p>PRODUCT VIEW: RIGHT SIDE UP</p>	
	<input type="checkbox"/> ALL DIMENSIONS CORRECT.		<p>CUSTOMER: CONTECH ENGINEERING SOLUTIONS</p>	
	<input type="checkbox"/> LIFTERS INSTALLED.		<p>PLANT: BEAVER DAM, KY.</p>	
	<input type="checkbox"/> CORRECT HEIGHT.		<p>PROJECT: OBERLIN CAMBY (IN) 866651-10</p>	
	<input type="checkbox"/> REINFORCING CORRECT.		<p>STRUCTURE: 10-CS-10</p>	
	<input type="checkbox"/> FINISH ON SLAB SURFACE UNIFORM.		<p>QUOTE/SALES ORDER NO: 25-3423</p>	
<input type="checkbox"/> EDGE CHAMFERED.		<p>PC: T. SEKULA</p>		
<input type="checkbox"/> JOINT INSTALLED.		<p>DRAWING: J. COPPAGE</p>		
<p>QC CHECK INITIALS:</p>		<p>DATE: 9/30/25</p>	<p>SCALE: NTS</p>	<p>PG. 1 of 1</p>