

Job Name: 25-3419 - MSU Learning Commons
 Job Location: Murray, KY
 Contractor: Sykes Family Farms, LLC.

Plant: 100
 2/24/2026 10:46:47 AM

Tech: J. Horsley - F
 PC: E. Bradley



Structure ID: INL 15

P2 MH048LD12S

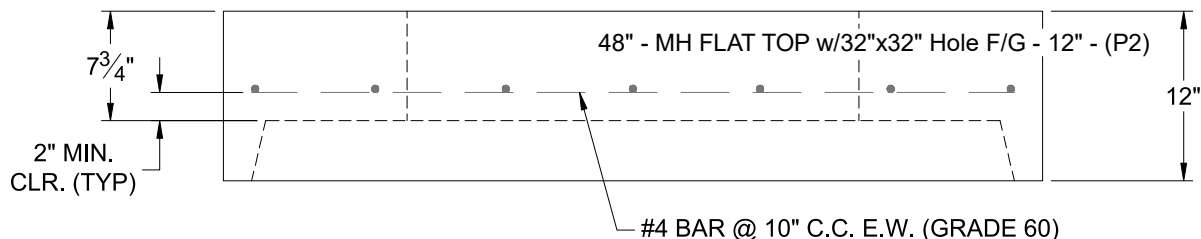
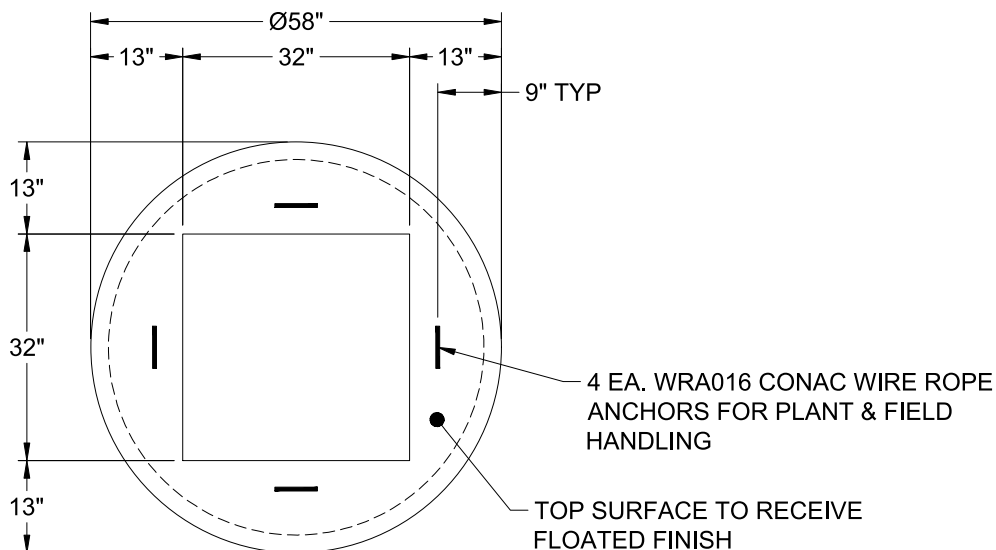
MH FLAT TOP w/32"x32" Hole F/G

- P3) 32" x 32" - CASTING HEIGHT - 3"
- P2) 48" - MH FLAT TOP w/32"x32" Hole F/G - 12"
- P1) 48" - MH BASE Custom Ht T/n - 67"
- 1) CASTING - HOE 595 F/G
- 1) 48" - Conseal CS-102 1.00"
- 1) 32" x 32" - Conseal CS-102 1.00"
- 2) Hole - 22
- 1) Hole - 8
- 5) MH Step ML-10-TDS-NCR - 10"

0 lb
 1629 lb
 5660 lb
 376 lb
 0 lb
 0 lb
 0 lb
 0 lb
 0 lb
 0 lb

 Structure Total: 7666 lb

- Structure Notes:
1. PER ASTM C-478 SPECIFICATIONS
 2. CONCRETE: 4,000 PSI AT 28 DAYS
 3. REINFORCEMENT: #4 BAR @ 10" C.C. E.W. (GRADE 60) - 2" MIN. REBAR CLEARANCE (TYP)
 4. HOE 595 FRAME & GRATES SUPPLIED BY ICAST
 5. LIFTERS: 4 EA. WRA016 CONAC WIRE ROPE ANCHORS FOR PLANT & FIELD HANDLING
 6. TOP SURFACE TO RECEIVE FLOATED FINISH



Coating (Int):
 Coating (Ext):

Seam Up: Flat
 Seam Dn: Groove

Wall Thickness: 5"

Height (Ext): 12"

Weight (Net): 1629 lb
 Volume (Net): 0.42cu.yd