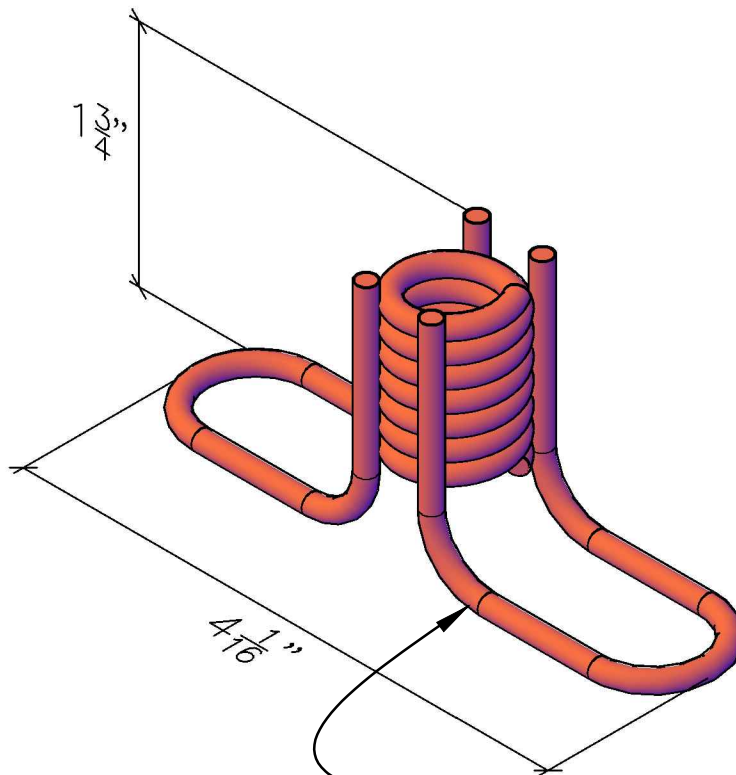


25-3415B - RIGHT HAND

Fairbanks Softball & Baseball Dugouts

HARDWARE



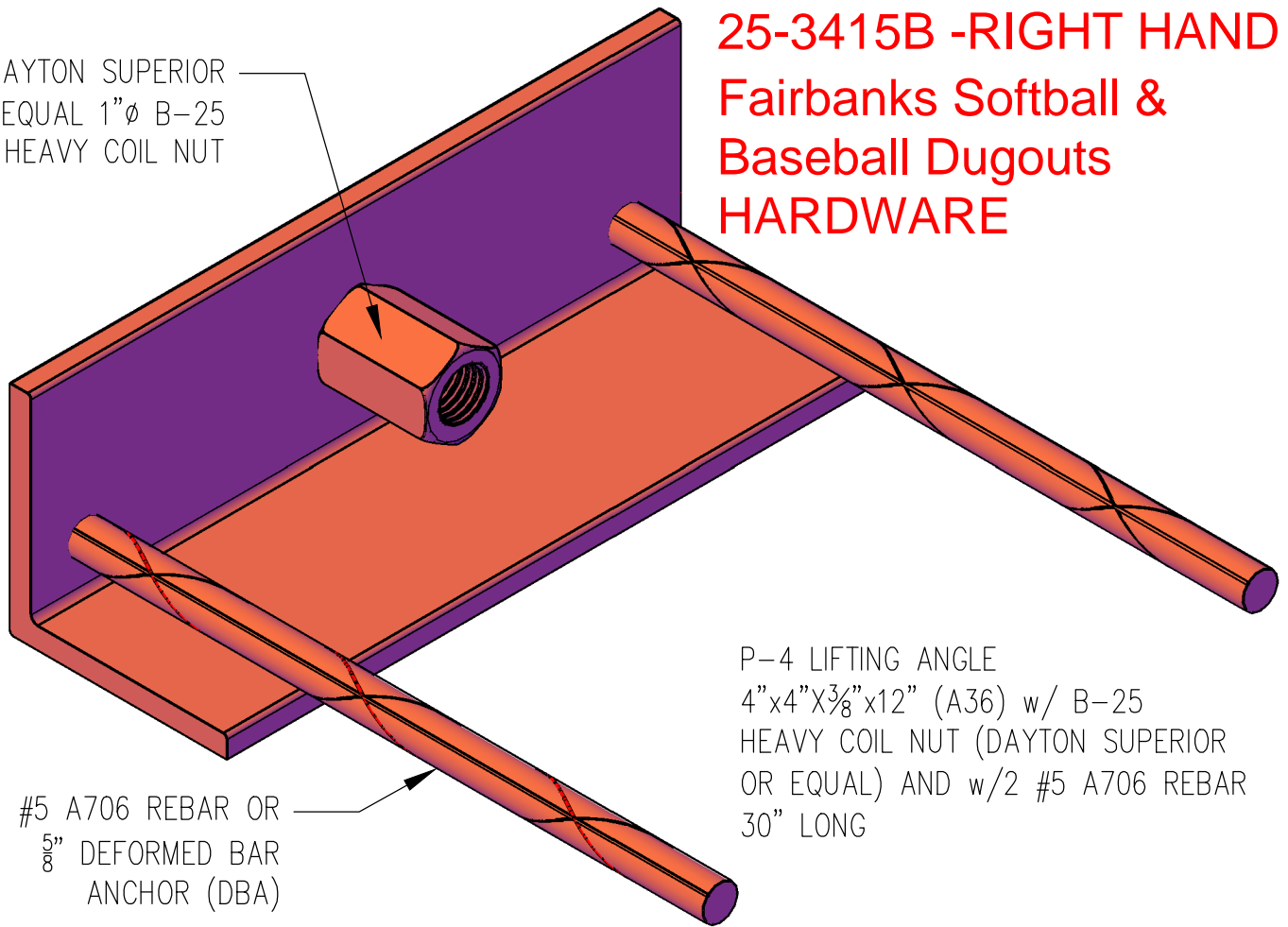
1/2" x 1 3/4" FLARED THIN SLAB
COIL INSERT

VENDORS: DAYTON SUPERIOR (F-63),
PATTERSON (CI-63), MEADOWBURKE
REFER TO VENDOR CATALOG FOR
CAPACITIES

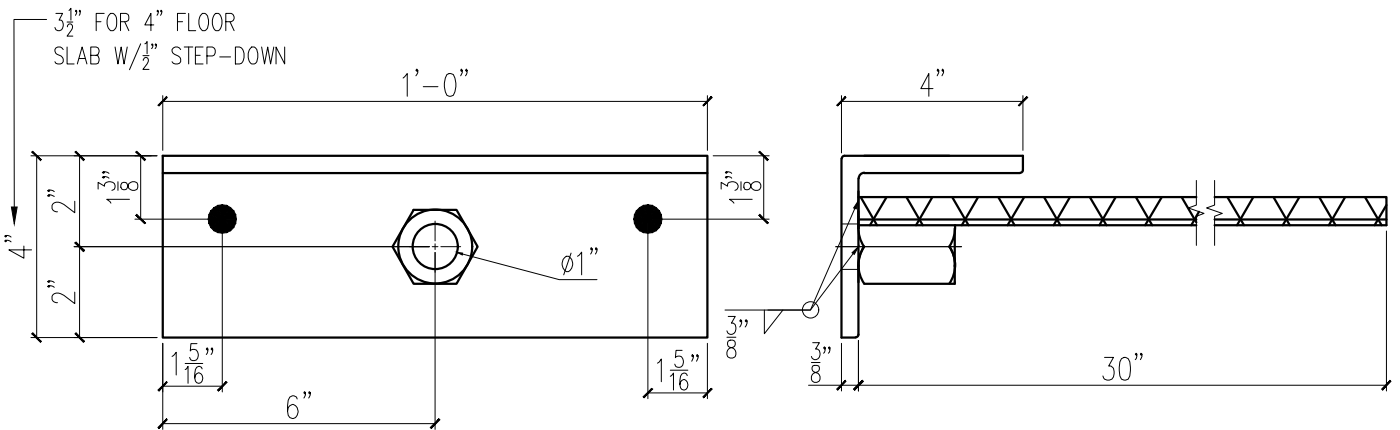
PROJECT: STANDARD VENDOR ITEM	<table border="1"> <thead> <tr> <th colspan="2">ORDER HISTORY</th> </tr> <tr> <th>DATE</th> <th>QTY.</th> </tr> </thead> <tbody> <tr> <td>-</td> <td>-</td> </tr> <tr> <td>-</td> <td>-</td> </tr> <tr> <td>-</td> <td>-</td> </tr> </tbody> </table>	ORDER HISTORY		DATE	QTY.	-	-	-	-	-	-	<table border="1"> <tr> <td style="text-align: center;">TOTAL QUANTITY NEEDED FOR JOB</td> <td style="text-align: center;">→</td> <td data-bbox="1299 1768 1534 1900" style="text-align: center;"> <table border="1"> <tr> <td>QUANTITY</td> </tr> <tr> <td style="text-align: center;">-</td> </tr> </table> </td> </tr> </table>	TOTAL QUANTITY NEEDED FOR JOB	→	<table border="1"> <tr> <td>QUANTITY</td> </tr> <tr> <td style="text-align: center;">-</td> </tr> </table>	QUANTITY	-
ORDER HISTORY																	
DATE	QTY.																
-	-																
-	-																
-	-																
TOTAL QUANTITY NEEDED FOR JOB	→	<table border="1"> <tr> <td>QUANTITY</td> </tr> <tr> <td style="text-align: center;">-</td> </tr> </table>	QUANTITY	-													
QUANTITY																	
-																	
PROJECT NO.: ESW STANDARDS	<table border="1"> <tr> <td style="text-align: center;">ITEM COST</td> </tr> <tr> <td style="text-align: center;">\$. - / /</td> </tr> </table>	ITEM COST	\$. - / /	<table border="1"> <tr> <td> DRAWN BY: - </td> <td> FINISH: ELECTROPLATED </td> <td data-bbox="1299 1900 1534 2053" rowspan="2" style="text-align: center;"> <table border="1"> <tr> <td>HARDWARE ITEM</td> </tr> <tr> <td style="text-align: center;">P101L</td> </tr> </table> </td> </tr> <tr> <td> ISSUE DATE: 11-07-13 </td> <td> APPROVAL: </td> </tr> </table>	DRAWN BY: -	FINISH: ELECTROPLATED	<table border="1"> <tr> <td>HARDWARE ITEM</td> </tr> <tr> <td style="text-align: center;">P101L</td> </tr> </table>	HARDWARE ITEM	P101L	ISSUE DATE: 11-07-13	APPROVAL:						
ITEM COST																	
\$. - / /																	
DRAWN BY: -	FINISH: ELECTROPLATED	<table border="1"> <tr> <td>HARDWARE ITEM</td> </tr> <tr> <td style="text-align: center;">P101L</td> </tr> </table>	HARDWARE ITEM	P101L													
HARDWARE ITEM																	
P101L																	
ISSUE DATE: 11-07-13	APPROVAL:																

25-3415B -RIGHT HAND Fairbanks Softball & Baseball Dugouts HARDWARE

DAYTON SUPERIOR
OR EQUAL 1"Ø B-25
HEAVY COIL NUT



P-4 LIFTING ANGLE
4"x4"x3/8"x12" (A36) w/ B-25
HEAVY COIL NUT (DAYTON SUPERIOR
OR EQUAL) AND w/2 #5 A706 REBAR
30" LONG



WELDING IN ACCORDANCE WITH:
AWS D1.1 AMERICAN WELDING SOCIETY:
STRUCTURAL WELDING CODE-STEEL
AWS D1.4 AMERICAN WELDING SOCIETY:
STRUCTURAL WELDING CODE-REINFORCING STEEL

NOTE:
- FOR HEAVY BUILDINGS USE MODIFIED P-4
- BUILDINGS THAT EXCEED 80,000 LBS, CONSULT
STRUCTURAL ENGINEER
- COLD-GALVANIZED FINISH, ZINC-RICH COATED IN
ACCORDANCE WITH ASTM A780

PROJECT:
STANDARD PRECAST MATERIAL

PROJECT NO.:
ESW STANDARDS

ORDER HISTORY	
DATE	QTY.
-	-
-	-
-	-

TOTAL QUANTITY
NEEDED FOR JOB →

QUANTITY
-

EASI SET WORLDWIDE
5119 Catlett Rd. • Midland, VA 22728 • info@EasiSet.com
www.EasiSet.com • 800-547-4045 • Fax 540-439-2541

ITEM COST
\$. - / /

DRAWN BY:
-

ISSUE DATE:
11-07-13

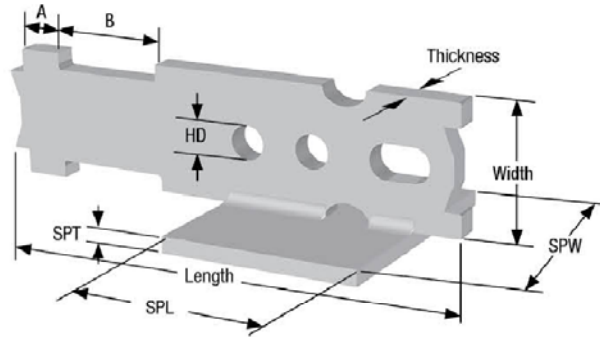
FINISH:
GALVANIZED

APPROVAL:

HARDWARE ITEM
P102G

QUIKLIFT™ ERECTION ANCHOR - TECH SERIES WITH SHEAR PLATE

The Erection Anchor Tech Series with Shear Plate is designed for horizontal to vertical edge lifting and handling of thin-walled precast elements. The two “ears” on the anchor head prevent the clutch from coming in contact and spalling the concrete. The “ears” transfer the shear loads into the anchor and concrete. A tension bar is typically required to reach the higher tension capacities. Available in 2T, 4T and 8-Ton capacities.



Standard Finish: Hot-Dipped Galvanized

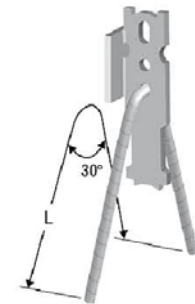
ERECTION ANCHOR - TECH SERIES WITH SHEAR PLATE DIMENSIONS

Part Number	Ton	Ring Clutch System	Width	Length	Thickness	HD - Hole Diameter	A	B	SPW - Shear Plate Width	SPL - Shear Plate Length	SPT - Shear Plate Thickness	Anchor Ultimate Mechanical Load in Tension (lbs)	Weight Per Piece (lbs)
QL527SPG	2T	2T-3T (QL001)	2"	8-11/16"	3/8"	5/8"	5/8"	2-5/8"	2-1/2"	3"	1/4"	16,000	2.04
QL548SPG	4T	4T-6T (QL002)	2-1/2"	10-7/16"	5/8"	3/4"	3/4"	2-5/8"	2-1/2"	3"	3/8"	32,000	4.47
QL589SPG	8T	8T-11T (QL003)	3-3/4"	13-1/2"	3/4"	1"	1"	3-5/8"	3"	3-1/2"	3/8"	64,000	9.97

ERECTION ANCHOR - TECH SERIES WITH SHEAR PLATE LOAD CHART

Anchor Capacity in Concrete, 4:1 SWL

Part Number	Ton	Ring Clutch System	Panel Thickness	Shear (lbs)	Tension w/o Tension Bar (lbs)	Tension w/ Tension Bar (lbs)	Min. Corner Distance (in.)
QL527SPG	2T	2T-3T (QL001)	3-1/2" min.	1,430	2,640	4,000	12"
			4"	1,950	3,190		
			4-1/2"	2,020	3,550		
			5"	2,100	3,900		
QL548SPG	4T	4T-6T (QL002)	4" min.	1,800	3,400	8,000	15"
			4-1/2"	2,470	3,860		
			5"	2,660	4,730		
			5-1/2"	2,770	4,970		
			6"	2,860	5,170		
QL589SPG	8T	8T-11T (QL003)	7" min.	4,010	7,100	16,000	18"
			7-1/2"	4,010	7,220		
			8"	4,010	7,690		



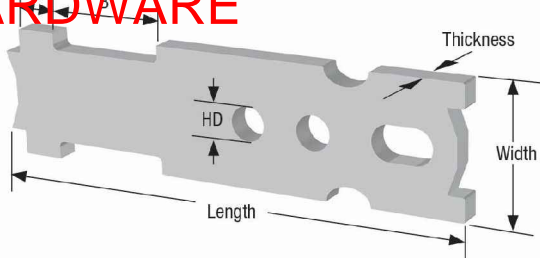
Tension Bars provide a simple and economical method to increase tension capacity. (See Tension Bar Selection Chart)

25-3415B -RIGHT HAND
Fairbanks Softball &
Baseball Dugouts
HARDWARE

- Table is based on a concrete compressive strength of 3,500 psi and 150 PCF concrete
- Above capacities are based upon mechanical testing and available industry data.
- Minimum anchor spacing is double the corner distance for anchors without tension bars

<p>PROJECT: STANDARD VENDOR ITEM</p>	<table border="1" style="width: 100%; border-collapse: collapse;"> <thead> <tr> <th colspan="2">ORDER HISTORY</th> </tr> <tr> <th>DATE</th> <th>QTY.</th> </tr> </thead> <tbody> <tr> <td style="text-align: center;">-</td> <td style="text-align: center;">-</td> </tr> <tr> <td style="text-align: center;">-</td> <td style="text-align: center;">-</td> </tr> <tr> <td style="text-align: center;">-</td> <td style="text-align: center;">-</td> </tr> </tbody> </table>	ORDER HISTORY		DATE	QTY.	-	-	-	-	-	-	<p style="text-align: center;">TOTAL QUANTITY NEEDED FOR JOB →</p>	<p style="text-align: center;">QUANTITY</p> <p style="text-align: center;">—</p>
ORDER HISTORY													
DATE	QTY.												
-	-												
-	-												
-	-												
<p>PROJECT NO.: ESW STANDARDS</p>	<table border="1" style="width: 100%; border-collapse: collapse;"> <thead> <tr> <th colspan="2">ITEM COST</th> </tr> </thead> <tbody> <tr> <td style="text-align: center;">\$</td> <td style="text-align: center;">. - / /</td> </tr> </tbody> </table>	ITEM COST		\$. - / /	<p>DRAWN BY: —</p>	<p>FINISH: GALVANIZED</p>						
ITEM COST													
\$. - / /												
<p>5119 Catlett Rd. • Midland, VA 22728 • info@EasiSet.com www.EasiSet.com • 800-547-4045 • Fax 540-439-2541</p>	<p>ISSUE DATE: 11-07-13</p>	<p>APPROVAL:</p>	<p style="text-align: center;">HARDWARE ITEM</p> <p style="text-align: center;">P103G P107G</p>										

QUIKLIFT™ ERECTION ANCHOR - TECH SERIES



The Erection Anchor Tech Series is designed for horizontal to vertical edge lifting and handling of thin-walled precast elements. The two “ears” on the head of the anchor prevent the clutch from coming in contact and spalling the concrete. The “ears” transfer the shear loads into the anchor and concrete. The shear bar is required with this anchor. A tension bar may be required to reach the higher tension capacities. Available in 2T, 4T and 8-Ton capacities.

Standard Finish: Hot-Dipped Galvanized

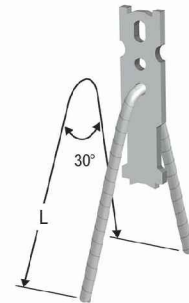
ERECTION ANCHOR - TECH SERIES DIMENSIONS

Part Number	Ton	Ring Clutch System	Width	Length	Thickness	HD - Hole Diameter	A	B	Anchor Ultimate Mechanical Load in Tension (lbs)	Weight Per Piece (lbs)
QL527G	2T	2T-3T (QL001)	2"	8-3/4"	3/8"	5/8"	5/8"	2-5/8"	16,000	1.46
QL548G	4T	4T-6T (QL002)	2-1/2"	10-1/2"	5/8"	3/4"	3/4"	2-5/8"	32,000	3.70
QL589G	8T	8T-10T (QL003)	3-3/4"	13-1/2"	3/4"	1"	1"	3-5/8"	64,000	8.65

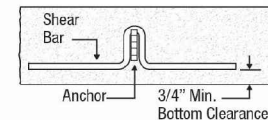
ERECTION ANCHOR - TECH SERIES LOAD CHART

Anchor Capacity in Concrete 4:1 SWL

Part Number	Ton	Ring Clutch System	Panel Thickness	Shear w/ Shear Bar (lbs)	Tension w/o Tension Bar (lbs)	Tension w/ Tension Bar (lbs)
QL527G	2T	2T-3T (QL001)	4" min.	1,490	3,190	4,000
			5"	2,110	3,900	
			5-1/2"	2,130	4,000	
			6"	2,520	4,000	
			7"	2,870	4,000	
			8"	3,160	4,000	
			10"	3,640	4,000	
QL548G	4T	4T-6T (QL002)	5-1/2" min.	2,670	4,970	8,000
			6"	3,075	5,170	
			7"	3,170	6,030	
			8"	3,430	6,910	
			9"	3,650	7,750	
			10"	3,860	8,000	
QL589G	8T	8T-10T (QL003)	7-1/2" min.	4,010	7,220	16,000
			8"	4,200	7,690	
			10"	4,950	9,580	
			12"	5,175	11,680	



Tension Bars provide a simple and economical method to increase tension capacity. (See Tension Bar Selection Chart)



QUIKLIFT™ Shear Bar is required to achieve shear strength shown in chart.

Table is based on a concrete compressive strength of 3,500 psi and 150 PCF concrete

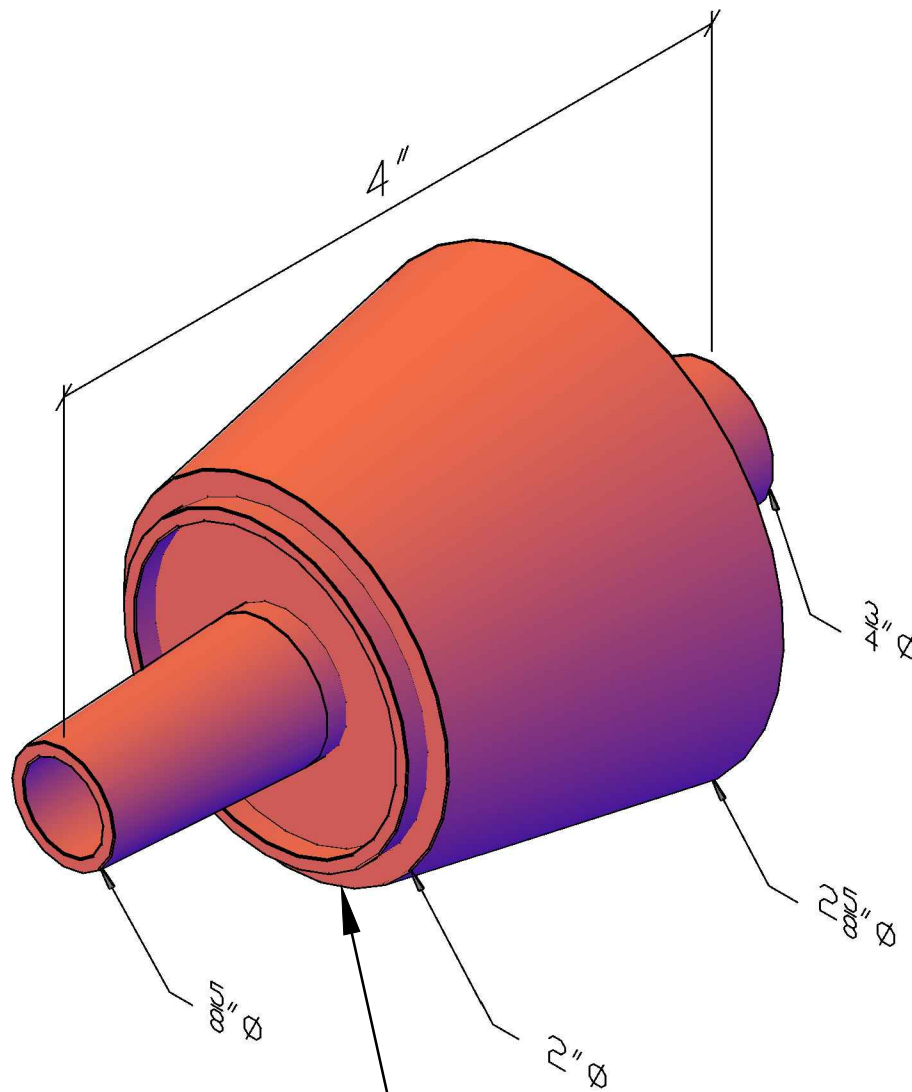
With proper embedment, reinforcement and minimum compressive strength concrete; Erection Anchors can achieve a pull out strength equal to their ultimate mechanical strength. (See Tension Bar Selection Chart)

PROJECT: STANDARD VENDOR ITEM	ORDER HISTORY		TOTAL QUANTITY NEEDED FOR JOB →	QUANTITY —
	DATE	QTY.		
PROJECT NO.: ESW STANDARDS	—	—	DRAWN BY: —	FINISH: GALVANIZED
EASI SET® WORLDWIDE 5119 Catlett Rd. • Midland, VA 22728 • info@EasiSet.com www.EasiSet.com • 800-547-4045 • Fax 540-439-2541	ITEM COST \$. - / /	ISSUE DATE: 11-07-13		

25-3415B - RIGHT HAND

Fairbanks Softball & Baseball Dugouts

HARDWARE



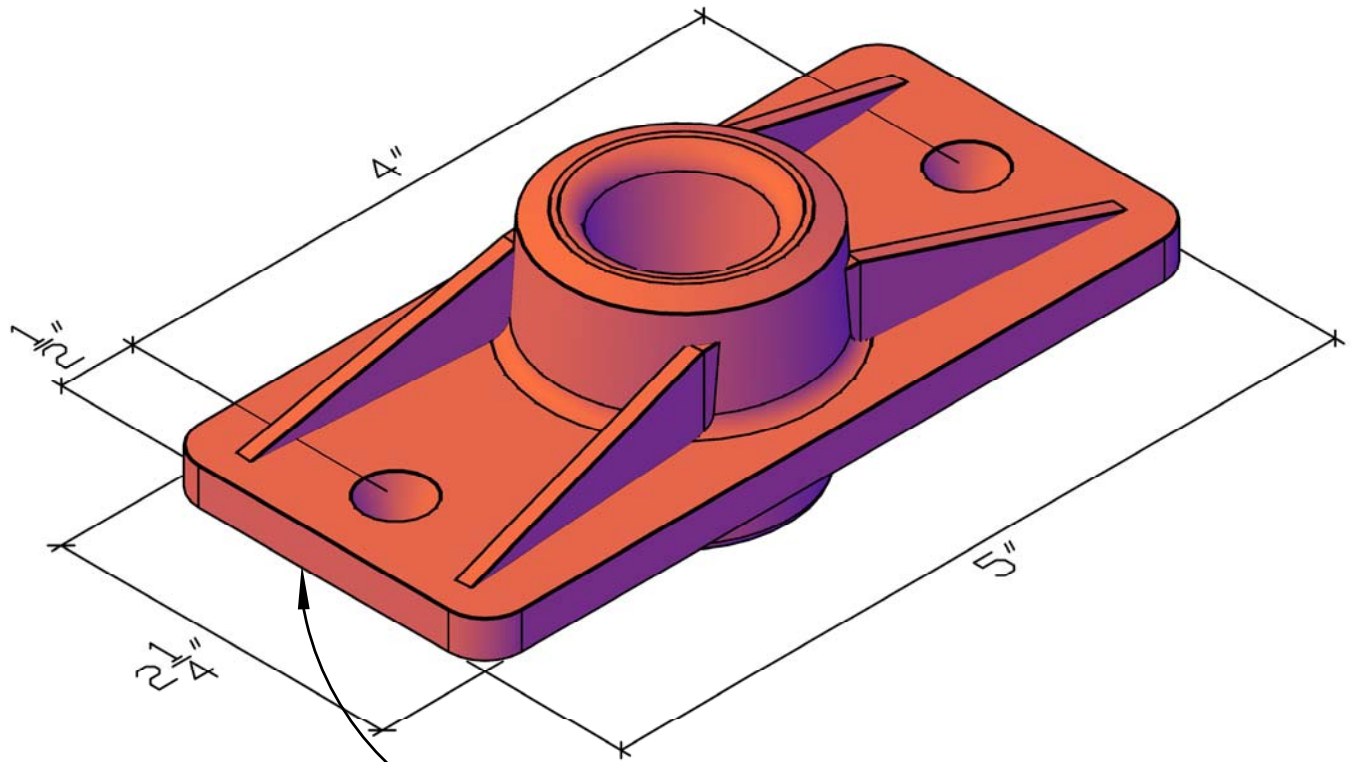
STANDARD U-5 POST TENSION COLLAR
 VENDOR: PATTERSON
 REFER TO CATALOG FOR DETAILS.

PROJECT: STANDARD VENDOR ITEM	<table border="1"> <thead> <tr> <th colspan="2">ORDER HISTORY</th> </tr> <tr> <th>DATE</th> <th>QTY.</th> </tr> </thead> <tbody> <tr> <td>-</td> <td>-</td> </tr> <tr> <td>-</td> <td>-</td> </tr> <tr> <td>-</td> <td>-</td> </tr> </tbody> </table>	ORDER HISTORY		DATE	QTY.	-	-	-	-	-	-	TOTAL QUANTITY NEEDED FOR JOB →	QUANTITY -
ORDER HISTORY													
DATE	QTY.												
-	-												
-	-												
-	-												
PROJECT NO.1: ESW STANDARDS	ITEM COST \$. - / /	DRAWN BY: -	FINISH: BLACK PLASTIC	HARDWARE ITEM P104A									
EASI SET WORLDWIDE <small>5119 Catlett Rd. • Midland, VA 22728 • info@EasiSet.com www.EasiSet.com • 800-547-4045 • Fax 540-439-2541</small>		ISSUE DATE: 11-07-13	APPROVAL:										

25-3415B - RIGHT HAND

Fairbanks Softball & Baseball Dugouts

HARDWARE



STANDARD U-5 POST TENSION ANCHOR
 VENDOR: PATTERSON
 REFER TO CATALOG FOR DETAILS.

PROJECT: STANDARD VENDOR ITEM	<table border="1"> <thead> <tr> <th colspan="2">ORDER HISTORY</th> </tr> <tr> <th>DATE</th> <th>QTY.</th> </tr> </thead> <tbody> <tr> <td>-</td> <td>-</td> </tr> <tr> <td>-</td> <td>-</td> </tr> <tr> <td>-</td> <td>-</td> </tr> </tbody> </table>	ORDER HISTORY		DATE	QTY.	-	-	-	-	-	-	TOTAL QUANTITY NEEDED FOR JOB →	<table border="1"> <tr> <td>QUANTITY</td> </tr> <tr> <td>QTY</td> </tr> </table>	QUANTITY	QTY
ORDER HISTORY															
DATE	QTY.														
-	-														
-	-														
-	-														
QUANTITY															
QTY															
PROJECT NO.: ESW STANDARDS	<table border="1"> <tr> <td>ITEM COST</td> </tr> <tr> <td>\$. - / /</td> </tr> </table>	ITEM COST	\$. - / /	DRAWN BY: -	FINISH: CAST IRON	<table border="1"> <tr> <td>HARDWARE ITEM</td> </tr> <tr> <td>P104P</td> </tr> </table>	HARDWARE ITEM	P104P							
ITEM COST															
\$. - / /															
HARDWARE ITEM															
P104P															
EASI SET® EASI-SET® WORLDWIDE <small>5119 Catlett Rd. • Midland, VA 22728 • info@EasiSet.com www.EasiSet.com • 800-547-4045 • Fax 540-439-2541</small>	ISSUE DATE: 11-07-13	APPROVAL:													

25-3415B - RIGHT HAND Fairbanks Softball & Baseball Dugouts HARDWARE

ALP2014



LIFTING & HANDLING

QUIKLIFT™ PLATE ANCHORS

The Plate Anchors are designed for removal of panels from the form. The Plate Anchors are designed with a plate welded to the bottom to provide a high capacity in a low profile anchor. The bottom plate allows reinforcing to be applied to the anchor as shown in the below diagram to maximize the capacity.

Standard Finish: Hot-Dipped Galvanized

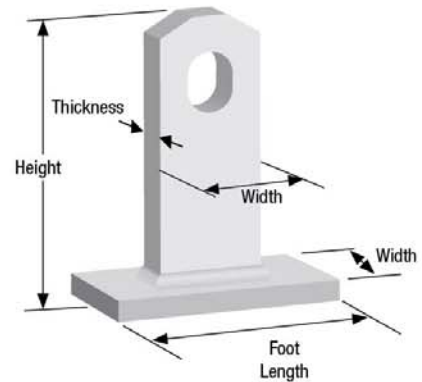
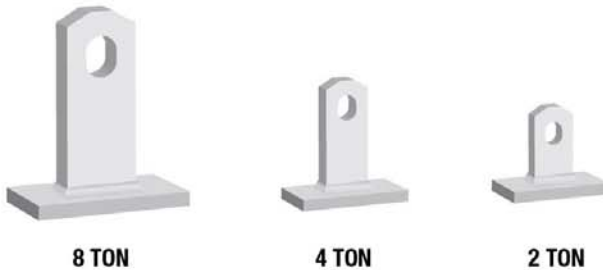


PLATE ANCHOR DIMENSIONS AND LOAD CHART

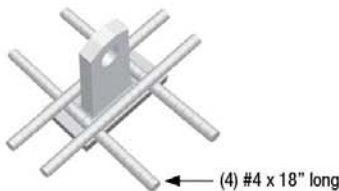
Part Number	Ton	Ring Clutch System	Width	Height	Anchor Head Thickness	Foot Length	Anchor Ultimate Mechanical Load in Tension (lbs)	Weight Per Piece (lbs)	Anchor Capacity in Concrete 4:1 SWL	
									Unreinforced Tension Load (lbs)	Reinforced Tension Load (lbs)
QL128G	2T	2T-3T (QL001)	1-1/4"	2-1/4"	3/8"	3-3/4"	16,000	0.75	950	4,000
QL846G	4T	4T-6T (QL002)	1-1/2"	3"	5/8"	3"	32,000	1.25	3,570	8,000
QL847G	4T	4T-6T (QL002)	1-1/2"	3-1/2"	5/8"	3"	32,000	1.35	4,700	8,000
QL044G	4T	4T-6T (QL002)	1-1/2"	4-3/8"	5/8"	3-7/8"	32,000	1.95	4,730	8,000
QL054G	8T	8T-10T (QL003)	2-1/2"	6-1/4"	3/4"	5"	64,000	5.40	6,530	12,000
QL042G	8T	8T-10T (QL003)	2-1/2"	7-1/8"	3/4"	5"	64,000	5.90	10,000	16,000

- Unreinforced tension values are based on a concrete compressive strength of 3,500 psi and 150 PCF concrete.
- Reinforced tension values are based on a concrete compressive strength of 3,000 psi, 150 PCF concrete and a minimum edge distance of 10".
- Minimum edge distance of (3 x anchor height + anchor width) / 2.
- Minimum of 3/4" concrete cover required below anchor

1) *Shear loads should be parallel to the face of the anchor and center line of recess.



2) Spalling may occur when pulling in shear perpendicular to the face of the anchor. This may lead to overloading the anchor



In order to achieve the higher tension values (listed above in the reinforced tension load column) (4) #4 x 18" reinforcing bars are required as illustrated. Two bars are placed directly on the bottom plate and the other two crisscross directly on top of the first bars. These must be secured in place to maintain contact with the plate.

PROJECT: STANDARD VENDOR ITEM	ORDER HISTORY		TOTAL QUANTITY NEEDED FOR JOB →	QUANTITY
	DATE	QTY.		QTY
PROJECT NO.: ESW STANDARDS	-	-	DRAWN BY: -	FINISH: GALVANIZED
	-	-		
EASI SET WORLDWIDE 5119 Catlett Rd. • Midland, VA 22728 • info@EasiSet.com www.EasiSet.com • 800-547-4045 • Fax 540-439-2541	ITEM COST		HARDWARE ITEM	P106G
	\$. - / /			

25-3415B - RIGHT HAND

Fairbanks Softball & Baseball Dugouts

HARDWARE



CONCRETE REINFORCEMENT

ENERPAC
PRECISION SURE-LOCK®



POST TENSION ANCHOR

Part Number	Strand Size
SL F5CA	0.25", 0.38", 0.43", 0.5", 0.50-0.52"
SL F6CA	0.50"-JUMBO, 0.60"-0.62"

ENERPAC
PRECISION SURE-LOCK®



2-PART WEDGE

Part Number	Strand Size
SL F250SL2	0.25"
SL F375SL2	0.38"
SL F437SL2	0.43"
SL F500SL2	0.50"-0.52"
SL F500SLJ2	0.50"-JUMBO
SL F600SL2	0.60"-0.62"

ENERPAC
PRECISION SURE-LOCK®



POCKET FORMER

Part Number	Strand Size	Weight
SL F5PF	0.50"	1.0 oz.
SL F6PF	0.60"	2.1 oz.

ENERPAC
PRECISION SURE-LOCK®



HAND WEDGE SETTER TOOL

Part Number	Weight
SL 400580	2.45 lbs

PROJECT:
STANDARD VENDOR ITEM

PROJECT NO.1:
ESW STANDARDS

ORDER HISTORY

DATE	QTY.
-	-
-	-
-	-

TOTAL QUANTITY
NEEDED FOR JOB →

QUANTITY

-

DRAWN BY:

-

FINISH:

-

HARDWARE ITEM

PT

HRDWRE

ISSUE DATE:

11-07-13

APPROVAL:

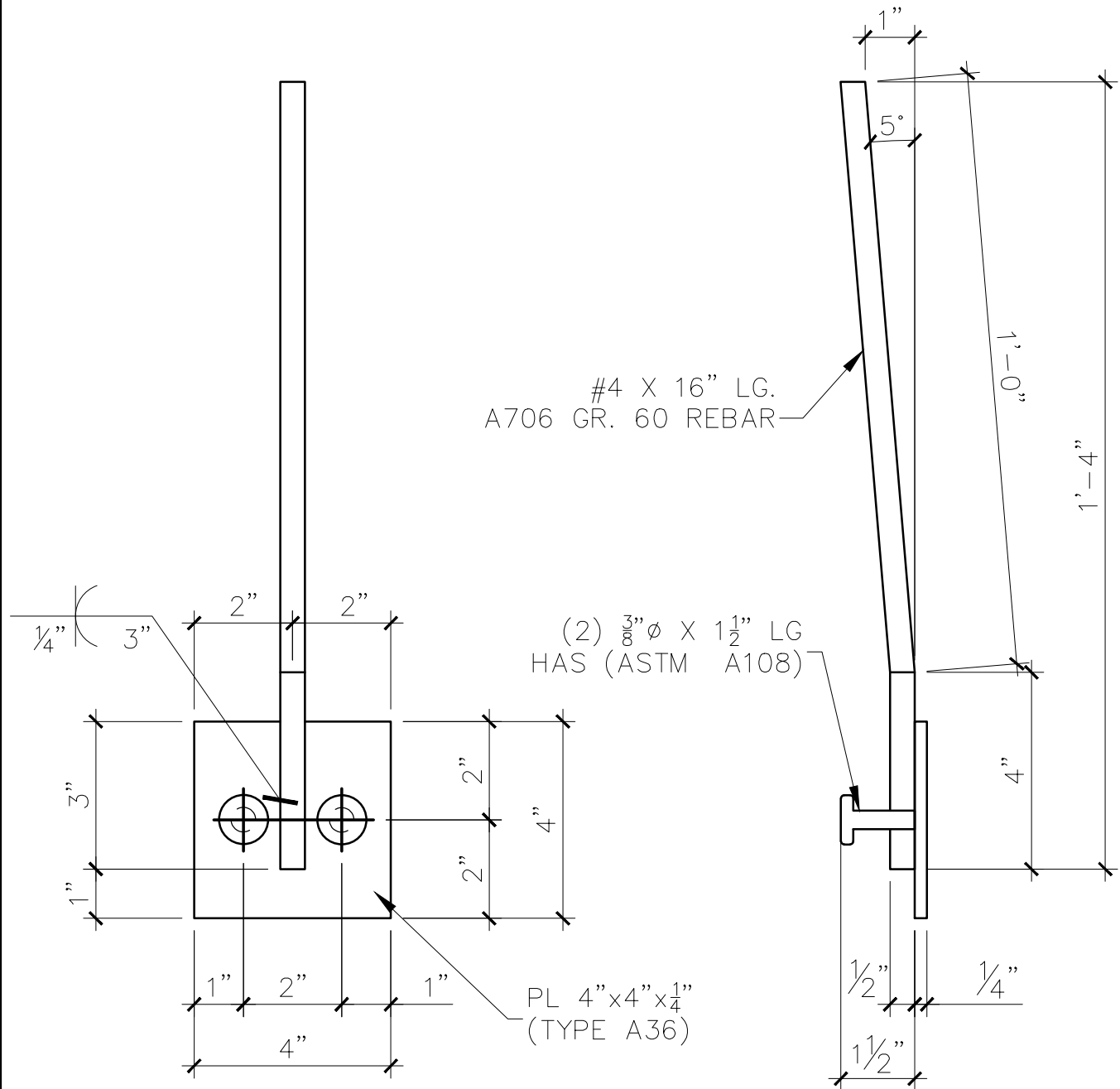
EASI SET **EASI-SET® WORLDWIDE**
5119 Catlett Rd. • Midland, VA 22728 • info@EasiSet.com
WORLDWIDE www.EasiSet.com • 800-547-4045 • Fax 540-439-2541

ITEM COST


\$. - / /

25-3415B - RIGHT HAND

Fairbanks Softball & Baseball Dugouts HARDWARE



WELDING IN ACCORDANCE WITH:
 AWS D1.1 AMERICAN WELDING SOCIETY: STRUCTURAL WELDING CODE-STEEL
 AWS D1.4 AMERICAN WELDING SOCIETY: STRUCTURAL WELDING CODE-REINFORCING STEEL

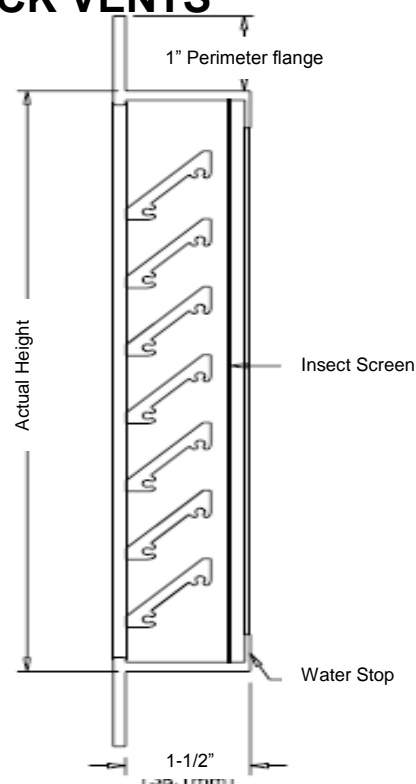
PROJECT: _	ORDER HISTORY		TOTAL QUANTITY NEEDED FOR JOB →	QUANTITY
	DATE	QTY.		—
PROJECT NO.: STANDARDS	—	—	DRAWN BY: MJR	FINISH: GALVANIZED
	—	—		ISSUE DATE: —
	ITEM COST		HARDWARE ITEM P201G	
	\$.	— / /		

25-3415B - RIGHT HAND

Fairbanks Softball & Baseball Dugouts

HARDWARE

MODEL "FL" 1-1/2" Deep with 1" Front Flange EXTRUDED ALUMINUM BRICK VENTS



QTY	MODEL #	ORDER SIZE	FINISHED DIMENSIONS (+1/4" to order size width for mechanical fasteners)	MINIMUM OPENING REQUIRED
3	FL157			

- Extruded aluminum to be 6063 - T5 Alloy. Minimum .125" thick.
- Blades are 1" deep, set at 45° angles, 1" on center.
- For any unit over 30" wide - do not mortar jamb sections.

FINISH:

SCREENS: 18 X 14 aluminum mesh

SUNVENT INDUSTRIES
By SYLRO SALES CORP.
1 Industrial Drive, #26
Pelham NH, 03076
Toll Free: 1-800-325-4115
In NH: 603-595-4556
Fax: 603-595-4778
www.sunventindustries.com
info@sunventindustries.com

PROJECT:

LOCATION:

ARCHITECT:

CONTRACTOR:

AGENT:

DATE:

JOB NO:

ORDER NO:

DWG NO: FL

REVISIONS:

Model # EX / FL	ORDER SIZE (Width x Height)	MINIMUM Opening Required (Width x Height)	
		EX Vent	FL Vent
825	8-1/8" x 2-3/8"	8-3/8" x 2-7/8"	8-1/2" x 2-5/8"
847	8-1/8" x 4-3/4"	8-3/8" x 5-1/4"	8-1/2" x 5"
808	8-1/8" x 7-3/4"	8-3/8" x 8-1/4"	8-1/2" x 8"
123	12" x 2-3/8"	12-1/4" x 2-7/8"	12-1/2" x 2-5/8"
125	12" x 4-3/4"	12-1/4" x 5-1/4"	12-1/2" x 5"
128	12" x 7-3/4"	12-1/4" x 8-1/4"	12-1/2" x 8"
1212	12" x 11-3/4"	12-1/4" x 12-1/4"	12-1/2" x 12"
157	15-5/8" x 7-3/4"	16" x 8-1/4"	16" x 8"
1516	15-5/8" x 15-3/4"	16" x 16-1/4"	16" x 16"
162	16-1/2" x 2-3/8"	16-3/4" x 2-7/8"	17" x 2-5/8"
164	16-1/2" x 4-3/4"	16-3/4" x 5-1/4"	17" x 5"
168	16-1/2" x 7-3/4"	16-3/4" x 8-1/4"	17" x 8"
1616	16-1/2" x 15-3/4"	16-3/4" x 16-1/4"	17" x 16"
242	24" x 2-3/8"	24-1/4" x 2-7/8"	24-1/2" x 2-5/8"
244	24" x 4-3/4"	24-1/4" x 5-1/4"	24-1/2" x 5"
248	24" x 7-3/4"	24-1/4" x 8-1/4"	24-1/2" x 8"
3208	32" x 7-3/4"	32-1/4" x 8-1/4"	32-1/2" x 8"
4808	48" x 7-3/4"	48-1/4" x 8-1/4"	48-1/2" x 8"

25-3415B - RIGHT HAND

Fairbanks Softball & Baseball Dugouts
HARDWARE