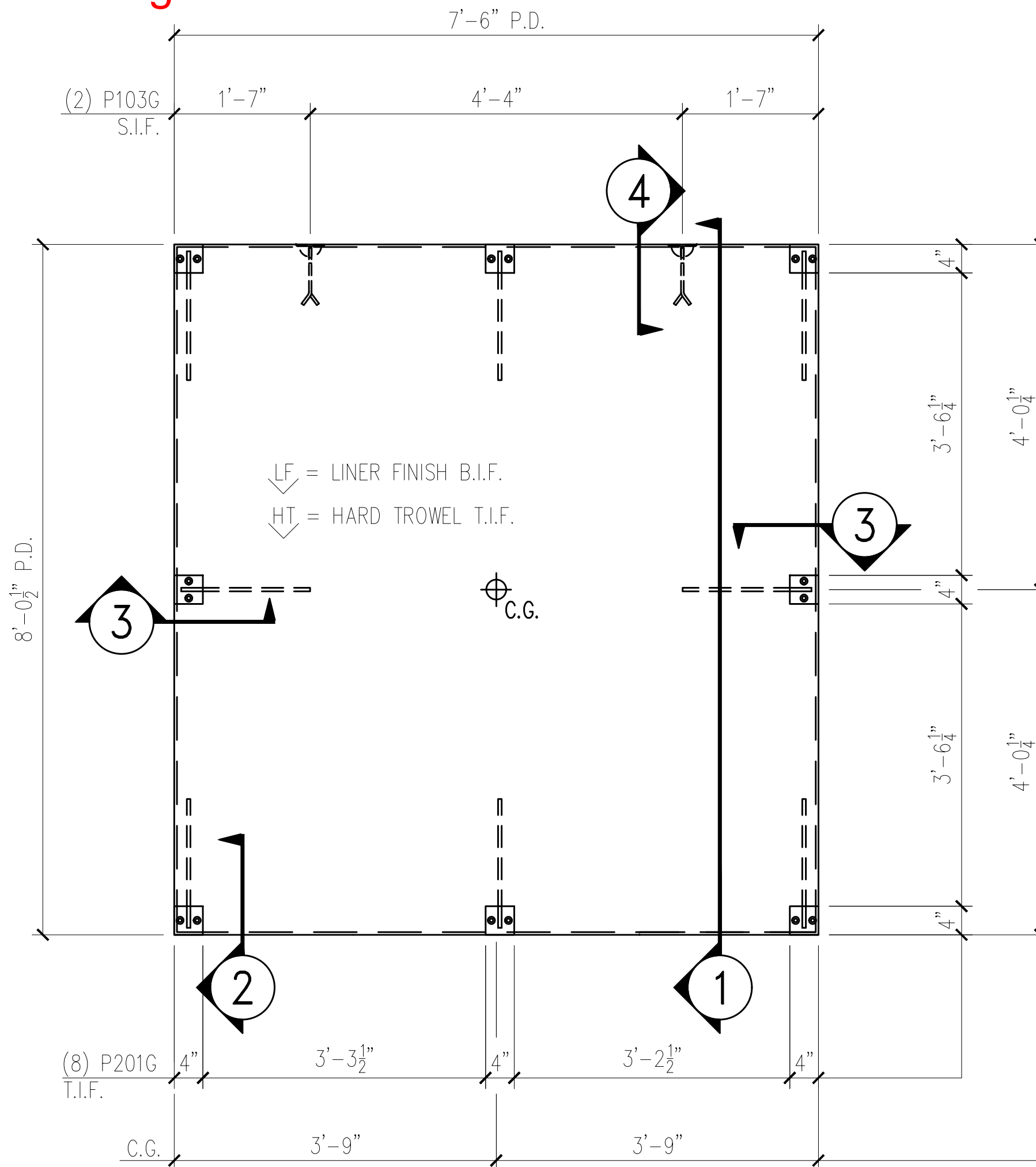
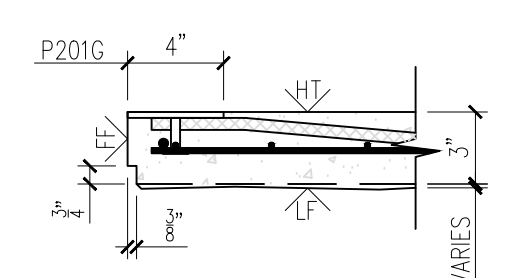
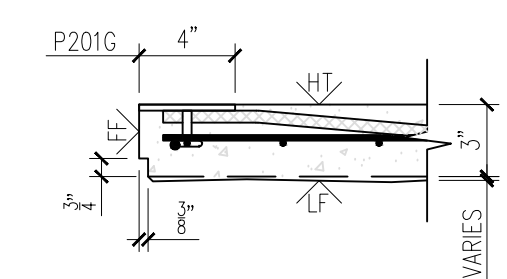
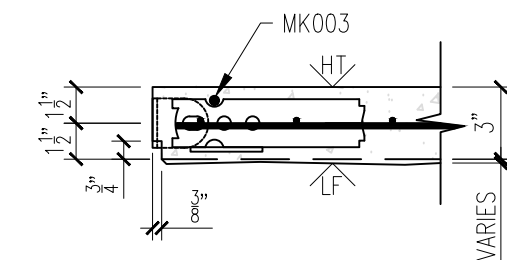
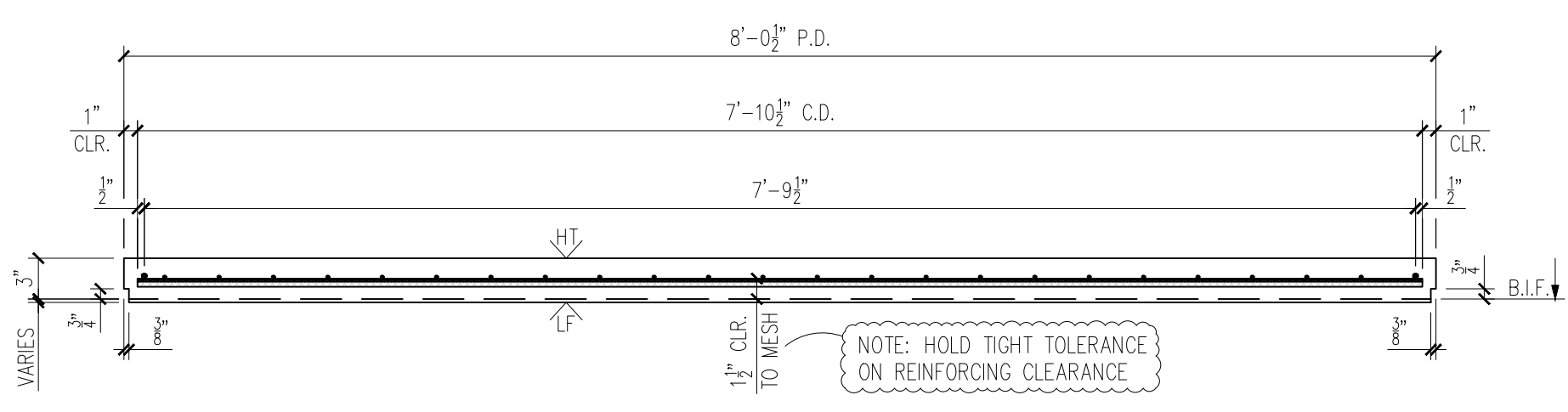


**25-3415B - RIGHT HAND**  
**Fairbanks Softball & Baseball Dugouts**  
**Product ID - CVW**  
**Wall - WP-06**  
**Weight - 2,445 LBS Each**  
**1 Required**



**WALL FORM VIEW**  
 SCALE: 1/2" = 1'-0"



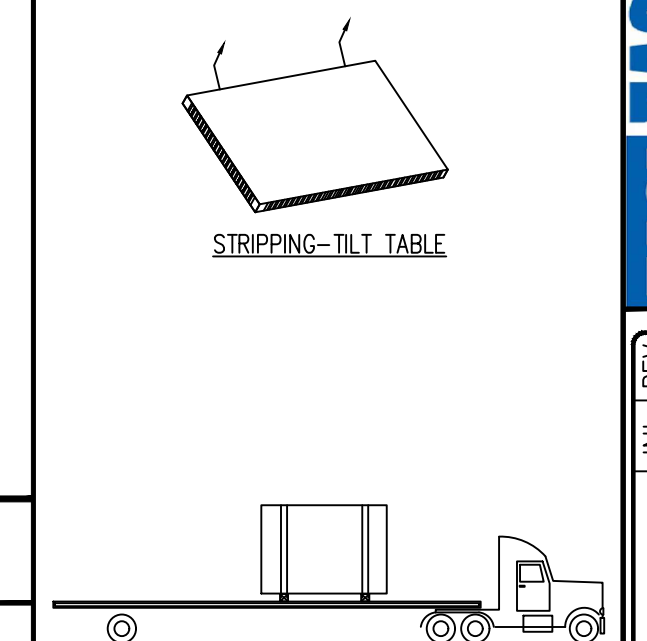
**MESSAGE CENTER**

- REFER TO DETAILS FOR REINFORCEMENT/CABLE PLACEMENT
- SHOP TICKET SHOWS EXTERIOR FACE OF PANEL CAST FACE DOWN

CHECKED BY: \_\_\_\_\_ DATE: \_\_\_\_\_  
 APPROVED BY: \_\_\_\_\_ DATE: \_\_\_\_\_

BILL OF MATERIALS		
MARK #	DESCRIPTION	QTY.
P201G	A36 STEEL 4"x4"x1/2" W/(2) 8"x1 1/2" HAS W/ 1'-4" BENT REBAR (GALV.)	8
P103G	2 TON RL-4 TECH ERECTION ANCHOR (79527SP) (GALV.)	2

**HANDLING INSTRUCTIONS**



REV	INI.	DESCRIPTION	DATE

CONCRETE INSTRUCTIONS	
CONCRETE RELEASE @:	2,500 P.S.I.
CONCRETE @ 28 DAYS:	5,000 P.S.I.
POST-TENSION @:	3,500 P.S.I.
CONCRETE MIXES	
CONCRETE - GRAY	VOLUME = 0.60 C.Y.
CONCRETE - MIX 1	VOLUME = - C.Y.
CONCRETE - MIX 2	VOLUME = - C.Y.
SOFT SOUND	VOLUME = - C.Y.
TOTALS	VOLUME = 0.60 C.Y.
WEIGHT:	2,445 LBS.

FINISHING INSTRUCTIONS	
LF = LINER FINISH	
HT = HARD TROWEL FINISH	
FF = FORM FINISH	
L = 7'-6"	SQ.FT.(T.I.F.) = 60.08
W = 8'-0 1/2"	SQ.FT.(T.I.F.) = -
D = 3"	SQ.FT.(T.I.F.) = -
CONTROL NUMBERS:	

PRODUCT	SALES ORDER NUMBER
ESW BUILDING	-
SHEET NUMBER	NUMBER REQUIRED
1 OF 2	1

**EASI-SET® WORLDWIDE**  
 5119 Catlett Rd. • Midland, VA 22728 • info@EasiSet.com  
 www.EasiSet.com • 800-547-4045 • Fax 540-439-2541

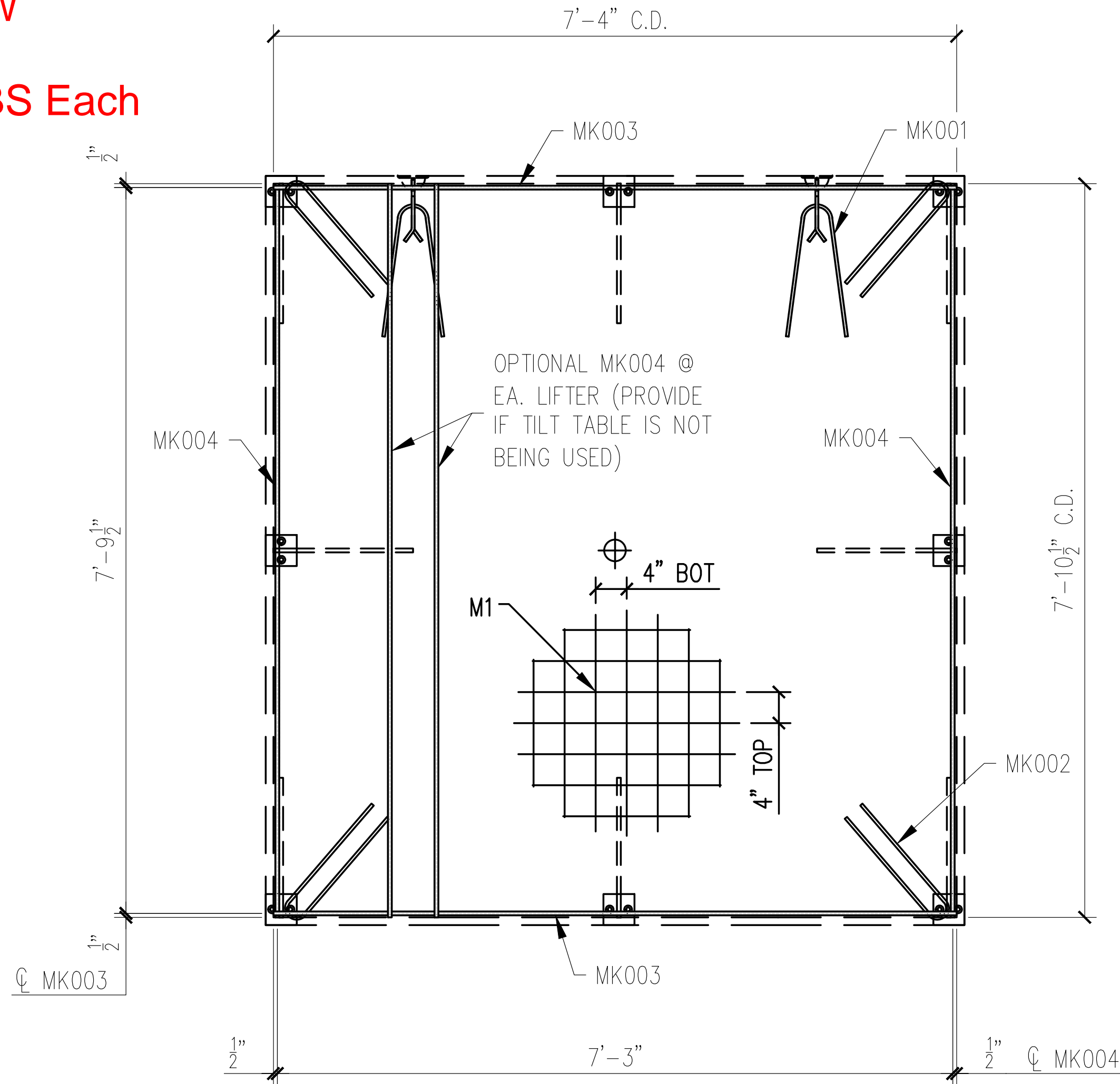
REV	INI.	DESCRIPTION	DATE

PROJECT: 38'x8' EASI-SET DUGOUT  
 FAIRBANKS DUGOUTS  
 MILFORD CENTER, OH  
 CONTRACTOR: LEVAN'S EXCAVATING, INC.

SCALE NTS
DRAWN BY FTL
CHECK BY WCR
ISSUE DATE 12.12.25
PIECE MARK WP-06

**25-3415B - RIGHT HAND**  
**Fairbanks Softball & Baseball Dugouts**  
**Product ID - CVW**  
**Wall - WP-06**  
**Weight - 2,445 LBS Each**  
**1 Required**

SHOP NOTE:  
 DIMENSIONS PROVIDED ARE PULLED FROM EDGE OF  
 CAGE TO CENTERLINE OF REBAR AND TO CENTER  
 OF REBAR TO CENTER OF REBAR



**WALL REINFORCING VIEW**

SCALE: 1/2" = 1'-0"

REINFORCING SCHEDULE		
MARK #	DESCRIPTION	QTY
MK001	#3 X 3'-0"	2
MK002	#3 X 3'-1"	4
MK003	#3 X 7'-4"	2
MK004	#3 X 7'-10 1/2"	2
MESH SCHEDULE		
MARK #	DESCRIPTION	QTY
M1	W4XW4 4"x4" WWF 7'-10 1/2" x 7'-4"	1

**EASI-SET® WORLDWIDE**  
 5119 Catlett Rd. • Midland, VA 22728 • info@EasiSet.com  
 www.EasiSet.com • 800-547-4045 • Fax 540-439-2541

REV	INI.	DESCRIPTION	DATE
1	-	-	-
2	-	-	-
3	-	-	-
4	-	-	-

NOTES:

1. TRIM PLASTIC SHEATH AT BOTH ENDS OF THE PT CABLE TO FIT BETWEEN U-5 ANCHOR PLATES
2. CONSTRUCT REBAR-MESH CAGE ACCORDING TO THE DRAWINGS. SECURE LIFTING APPARATUS TO FORM AND ADD PROPER REINFORCEMENT. PLACE REBAR-MESH CAGE AND HAIRPINS AT INSERTS WITH PROPER CLEARANCES (PER DRAWINGS).
3. PLACE AND SECURE PT CABLE AS INDICATED ON THE DRAWINGS (REINFORCING VIEW)

MESSAGE CENTER

1. REFER TO DETAILS FOR REINFORCEMENT/CABLE PLACEMENT

2. SUPPLEMENTAL STEEL FOR STRIPPING AND HANDLING MAY BE ADDED AS REQUIRED.

CHECKED BY: DATE:  
 APPROVED BY: DATE:

PRODUCT	SALES ORDER NUMBER
ESW BUILDING	-
SHEET NUMBER	NUMBER REQUIRED
2 OF 2	1

PROJECT: 38'x8' EASI-SET DUGOUT  
 FAIRBANKS DUGOUTS  
 MILFORD CENTER, OH  
 CONTRACTOR: LEVAN'S EXCAVATING, INC.

SCALE	NTS
DRAWN BY	FTL
CHECK BY	WCR
ISSUE DATE	12.12.25
PIECE MARK	WP-06