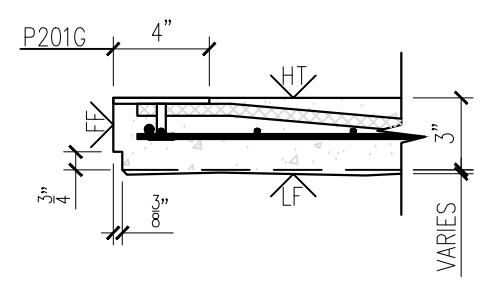
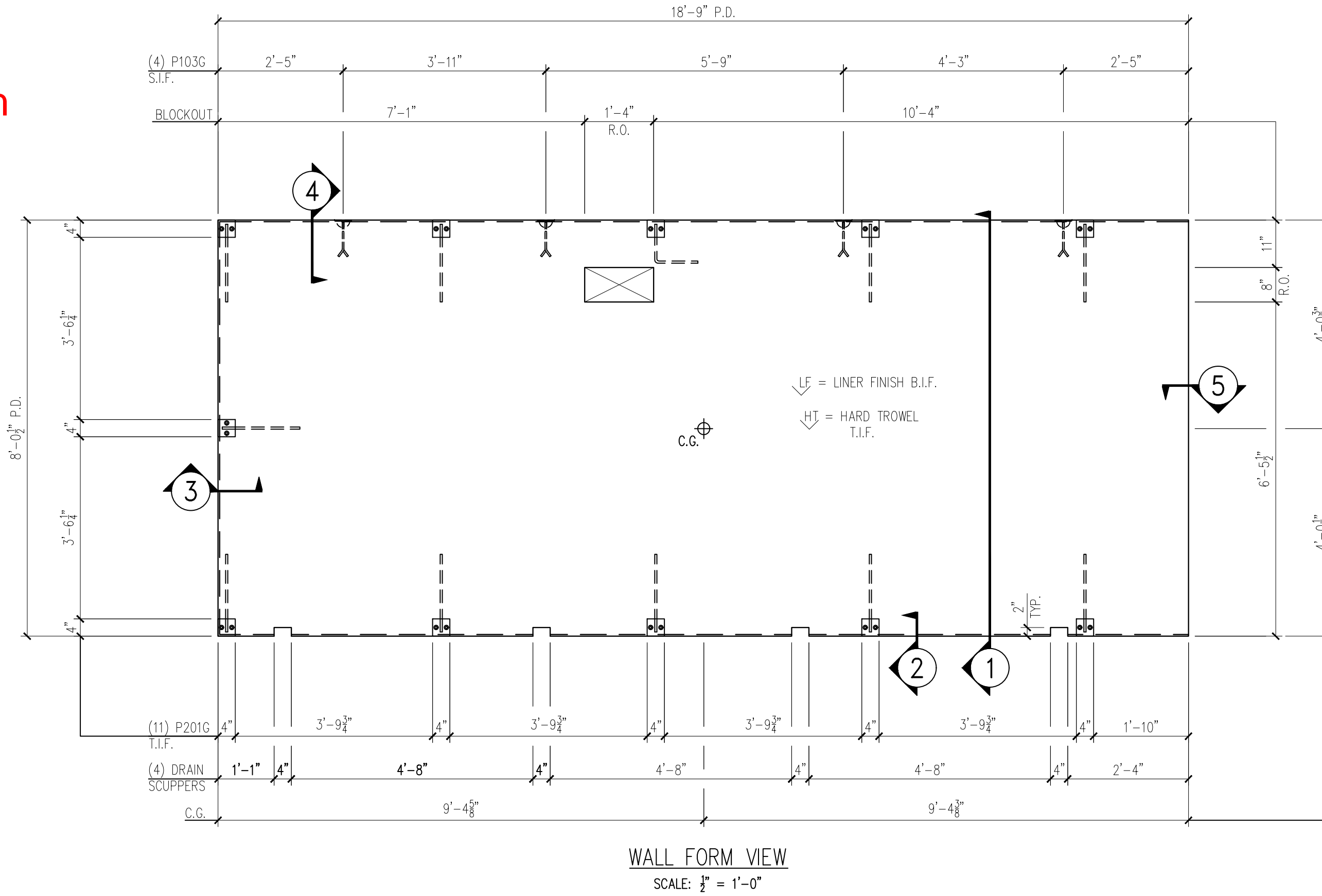
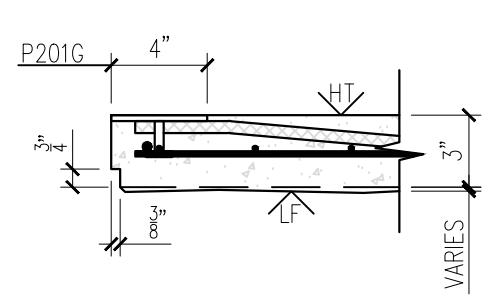


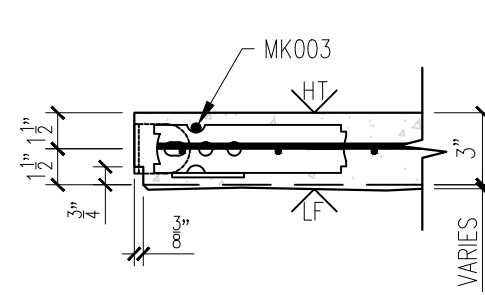
25-3415B - RIGHT HAND
Fairbanks Softball & Baseball Dugouts
Product ID - CVW
Wall - WP-03
Weight - 6,070 LBS Each
1 Required



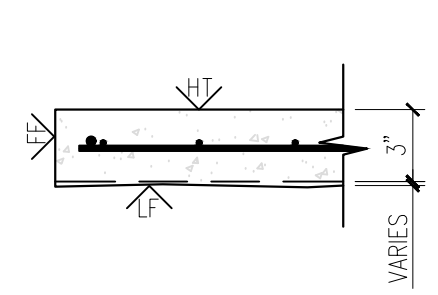
2



3

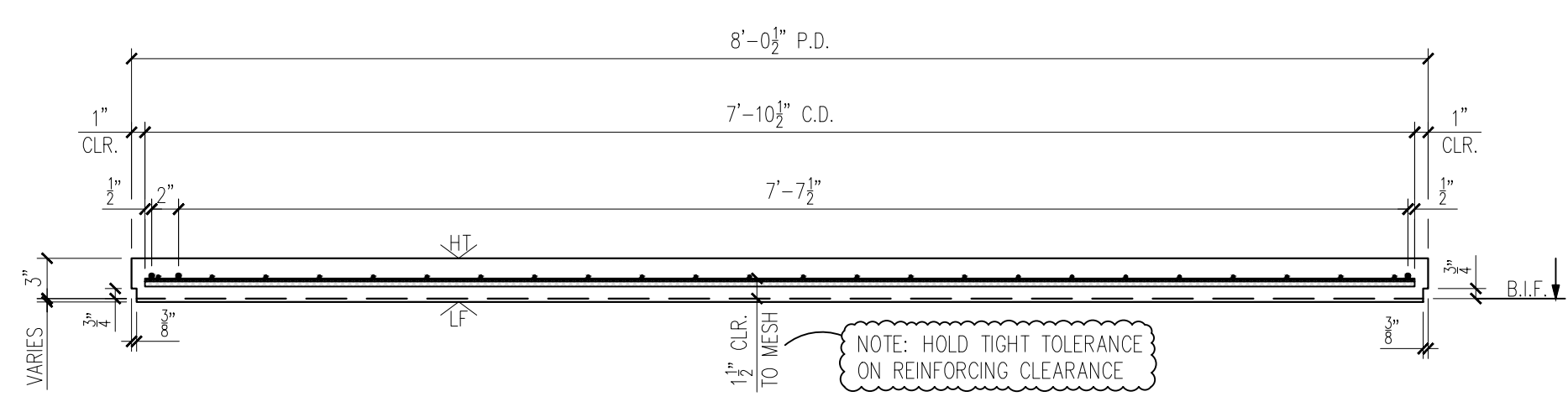


4



5

6



1

MESSAGE CENTER

1. REFER TO DETAILS FOR REINFORCEMENT/CABLE PLACEMENT

2. SHOP TICKET SHOWS EXTERIOR FACE OF PANEL CAST FACE DOWN

CHECKED BY: _____ DATE: _____

APPROVED BY: _____ DATE: _____

BILL OF MATERIALS		
MARK #	DESCRIPTION	QTY
P201G	A36 STEEL 4"x4"x1/2" W/(2) 8"x1 1/2" HAS W/ 1'-4" BENT REBAR (GALV.)	12
P103G	2 TON RL-4 TECH ERECTION ANCHOR (79527SP) (GALV.)	4

HANDLING INSTRUCTIONS

STRIPPING-TILT TABLE

SHIPPING

YARD STORAGE

REV	INI.	DESCRIPTION	DATE
1	-	-	-
2	-	-	-
3	-	-	-
4	-	-	-

CONCRETE INSTRUCTIONS	
CONCRETE RELEASE @:	2,500 P.S.I.
CONCRETE @ 28 DAYS:	5,000 P.S.I.
POST-TENSION @:	3,500 P.S.I.

CONCRETE MIXES	
CONCRETE - GRAY	VOLUME = 1.49 C.Y.
CONCRETE - MIX 1	VOLUME = - C.Y.
CONCRETE - MIX 2	VOLUME = - C.Y.
SOFT SOUND	VOLUME = - C.Y.
TOTALS	VOLUME = 1.49 C.Y.
WEIGHT:	6,070 LBS.

FINISHING INSTRUCTIONS	
LF = LINER FINISH	
HT = HARD TROWEL FINISH	
FF = FORM FINISH	
L = 8'-0 1/2"	SQ.FT.(T.I.F.) = 149.35
W = 18'-9"	SQ.FT.(T.I.F.) = -
D = 3"	SQ.FT.(T.I.F.) = -
CONTROL NUMBERS:	
-	
PRODUCT	SALES ORDER NUMBER
ESW BUILDING	-
SHEET NUMBER	NUMBER REQUIRED
1 OF 2	1

EASI-SET® WORLDWIDE

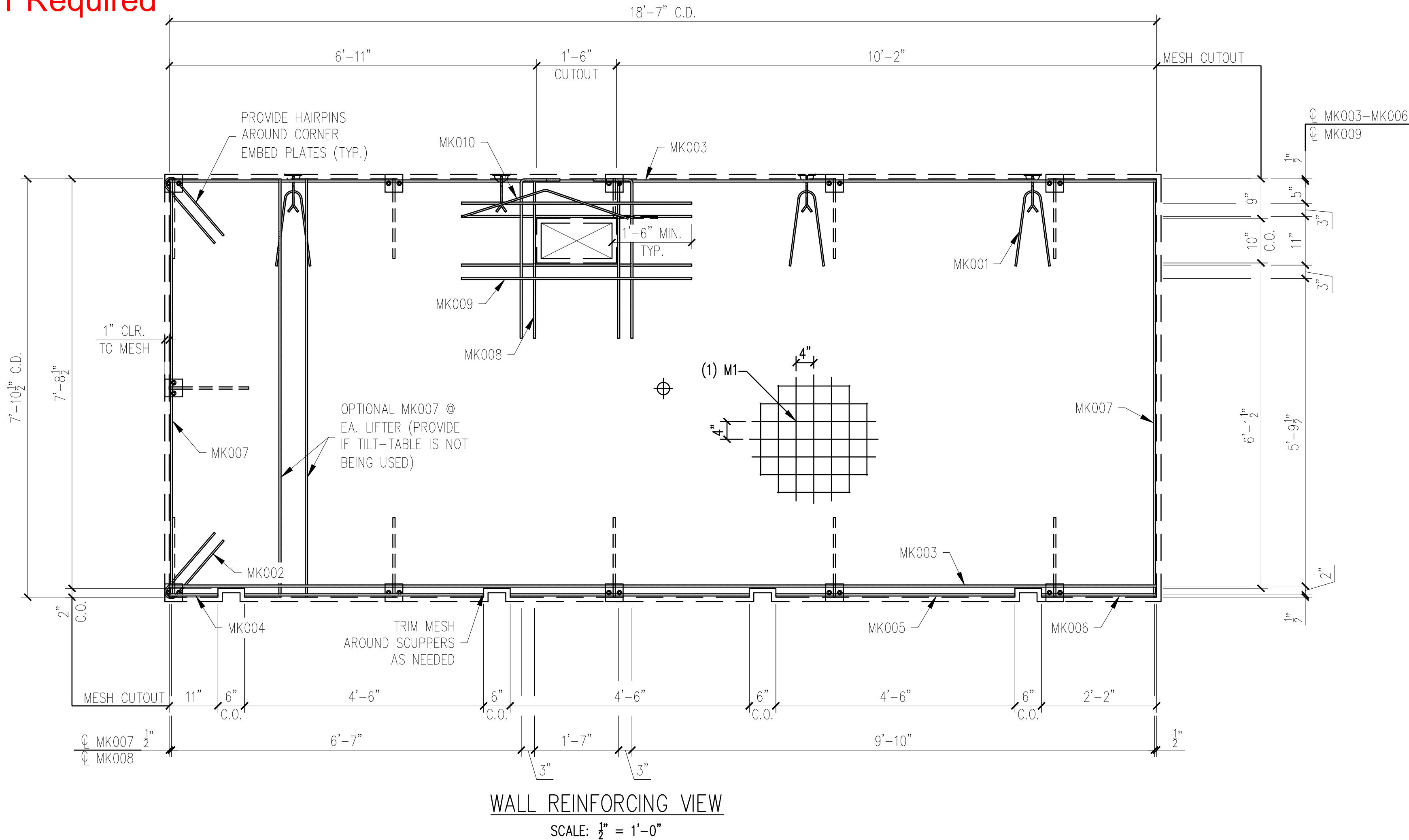
5119 Catlett Rd. • Midland, VA 22728 • info@EasiSet.com
 www.EasiSet.com • 800-547-4045 • Fax 540-439-2541

PROJECT: 38'x8'x8' EASI-SET DUGOUT
 FAIRBANKS DUGOUTS
 MILFORD CENTER, OH
 CONTRACTOR: LEVAN'S EXCAVATING, INC.

SCALE	NTS
DRAWN BY	FTL
CHECK BY	WCR
ISSUE DATE	01.07.26
PIECE MARK	WP-03

25-3415B - RIGHT HAND
Fairbanks Softball & Baseball Dugouts
Product ID - CVW
Wall - WP-03
Weight - 6,070 LBS Each
1 Required

SHOP NOTE:
 DIMENSIONS PROVIDED ARE PULLED FROM EDGE OF
 CAGE TO CENTERLINE OF REBAR AND TO CENTER
 OF REBAR TO CENTER OF REBAR



WALL REINFORCING VIEW
 SCALE: 1/2" = 1'-0"

REINFORCING SCHEDULE		
MARK #	DESCRIPTION	QTY
MK001	#3 X 3'-0"	3
MK002	#3 X 3'-1"	2
MK003	#3 X 18'-7"	2
MK004	#3 X 11"	1
MK005	#3 X 4'-6"	3
MK006	#3 X 2'-2"	1
MK007	#3 X 7'-10 1/2"	2
MK008	#3 X 3'-5"	4
MK009	#3 X 4'-4"	4
MK010	#3 X 3'-0"	1

MESH SCHEDULE		
MARK #	DESCRIPTION	QTY
M1	W4XW4 4"x4" WWF 18'-7" x 7'-10 1/2"	1

EASI-SET® WORLDWIDE
 5119 Catlett Rd. • Midland, VA 22728 • info@EasiSet.com
 www.EasiSet.com • 800-547-4045 • Fax 540-439-2541

REV	DESCRIPTION	DATE
INI.		
1		
2		
3		
4		

- NOTES:
1. TRIM PLASTIC SHEATH AT BOTH ENDS OF THE PT CABLE TO FIT BETWEEN U-5 ANCHOR PLATES
 2. CONSTRUCT REBAR-MESH CAGE ACCORDING TO THE DRAWINGS. SECURE LIFTING APPARATUS TO FORM AND ADD PROPER REINFORCEMENT. PLACE REBAR-MESH CAGE AND HAIRPINS AT INSERTS WITH PROPER CLEARANCES (PER DRAWINGS).
 3. PLACE AND SECURE PT CABLE AS INDICATED ON THE DRAWINGS (REINFORCING VIEW)

MESSAGE CENTER

1. REFER TO DETAILS FOR REINFORCEMENT/CABLE PLACEMENT
2. SUPPLEMENTAL STEEL FOR STRIPPING AND HANDLING MAY BE ADDED AS REQUIRED.

CHECKED BY: _____ DATE: _____
 APPROVED BY: _____ DATE: _____

PRODUCT	SALES ORDER NUMBER
ESW BUILDING	-
SHEET NUMBER	NUMBER REQUIRED
2 OF 2	1

PROJECT: 38'x8' EASI-SET DUGOUT
 FAIRBANKS DUGOUTS
 MILFORD CENTER, OH
 CONTRACTOR: LEVAN'S EXCAVATING, INC.

SCALE NTS

DRAWN BY FTL

CHECK BY WCR

ISSUE DATE 01.07.26

PIECE MARK WP-03