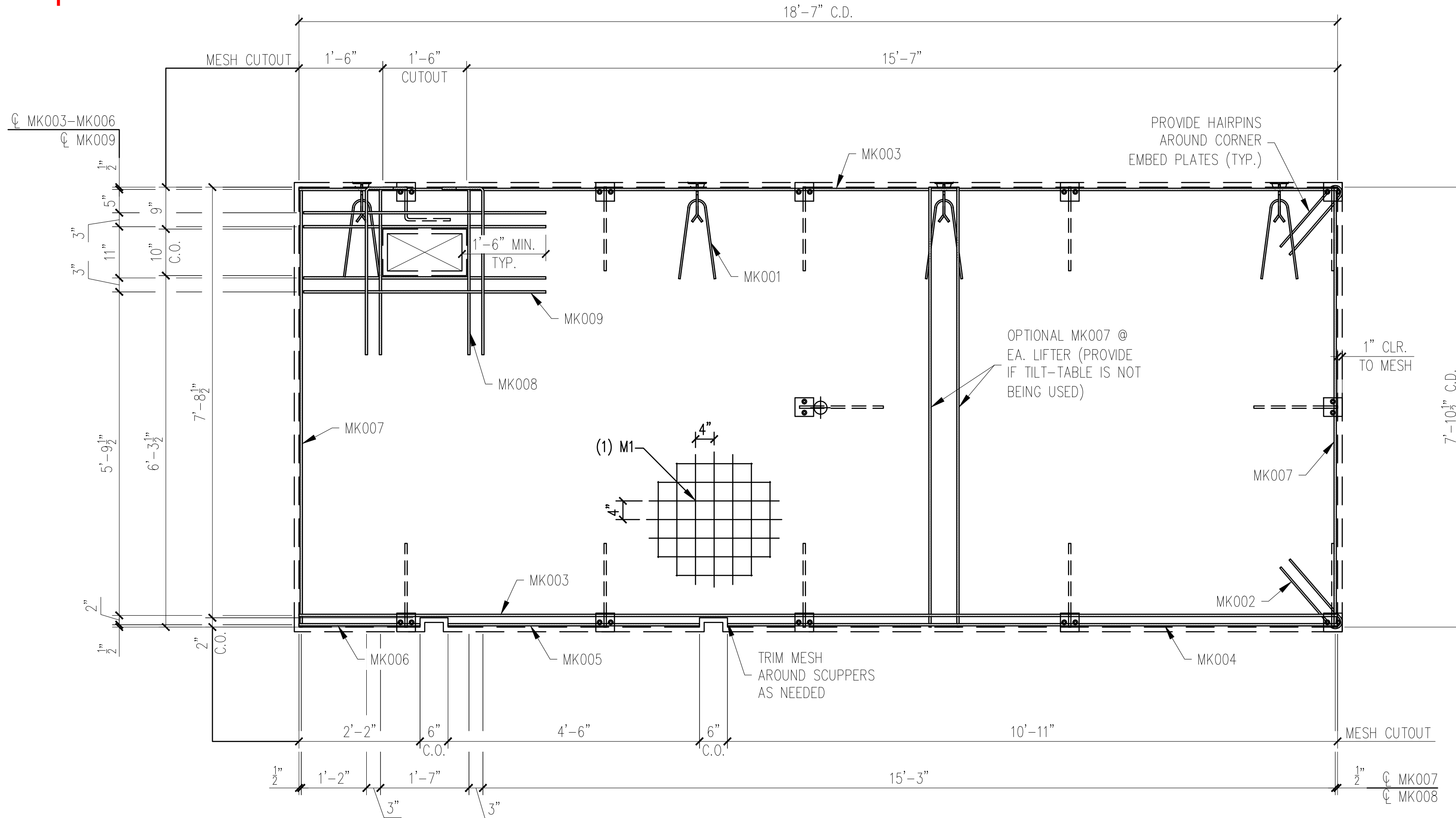


25-3415B - RIGHT HAND
Fairbanks Softball & Baseball Dugouts
Product ID - CVW
Wall - WP-01
Weight - 6,065 LBS Each
1 Required

SHOP NOTE:
 DIMENSIONS PROVIDED ARE PULLED FROM EDGE OF
 CAGE TO CENTERLINE OF REBAR AND TO CENTER
 OF REBAR TO CENTER OF REBAR



WALL REINFORCING VIEW
 SCALE: $\frac{1}{2}'' = 1'-0''$

REINFORCING SCHEDULE		
MARK #	DESCRIPTION	QTY
MK001	#3 X 3'-0"	4
MK002	#3 X 3'-1"	2
MK003	#3 X 18'-7"	2
MK004	#3 X 10'-11"	1
MK005	#3 X 4'-6"	1
MK006	#3 X 2'-2"	1
MK007	#3 X 7'-10 $\frac{1}{2}$ "	2
MK008	#3 X 3'-5"	4
MK009	#3 X 4'-4"	4

MESH SCHEDULE		
MARK #	DESCRIPTION	QTY
M1	W4XW4 4"x4" WWF 18'-7" x 7'-10 $\frac{1}{2}$ "	1

REV	INI.	DESCRIPTION	DATE
1			
2			
3			
4			

NOTES:

1. TRIM PLASTIC SHEATH AT BOTH ENDS OF THE PT CABLE TO FIT BETWEEN U-5 ANCHOR PLATES
2. CONSTRUCT REBAR-MESH CAGE ACCORDING TO THE DRAWINGS. SECURE LIFTING APPARATUS TO FORM AND ADD PROPER REINFORCEMENT. PLACE REBAR-MESH CAGE AND HAIRPINS AT INSERTS WITH PROPER CLEARANCES (PER DRAWINGS).
3. PLACE AND SECURE PT CABLE AS INDICATED ON THE DRAWINGS (REINFORCING VIEW)

MESSAGE CENTER

1. REFER TO DETAILS FOR REINFORCEMENT/CABLE PLACEMENT

2. SUPPLEMENTAL STEEL FOR STRIPPING AND HANDLING MAY BE ADDED AS REQUIRED.

CHECKED BY: _____ DATE: _____

APPROVED BY: _____ DATE: _____

PRODUCT	SALES ORDER NUMBER
ESW BUILDING	-
SHEET NUMBER	NUMBER REQUIRED
2 OF 2	1

EASI-SET® WORLDWIDE
 5119 Catlett Rd. • Midland, VA 22728 • info@EasiSet.com
 www.EasiSet.com • 800-547-4045 • Fax 540-439-2541

REV	INI.	DESCRIPTION	DATE
1			
2			
3			
4			

PROJECT: 38'x8' EASI-SET DUGOUT
 FAIRBANKS DUGOUTS
 MILFORD CENTER, OH
 CONTRACTOR: LEVAN'S EXCAVATING, INC.

SCALE	NTS
DRAWN BY	FTL
CHECK BY	WCR
ISSUE DATE	01.05.26
PIECE MARK	WP-01