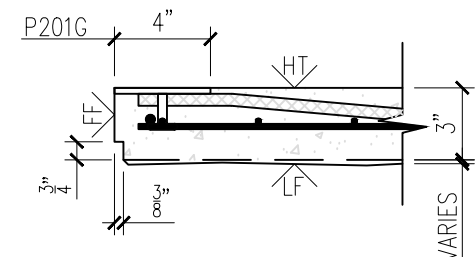
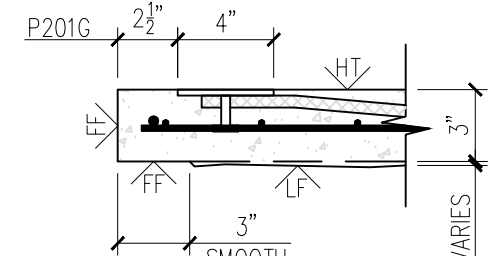
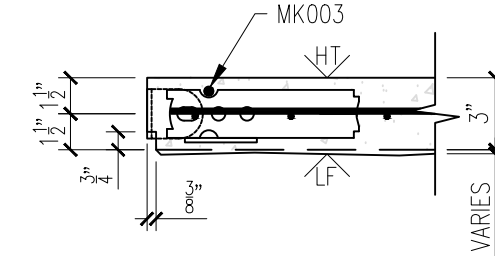
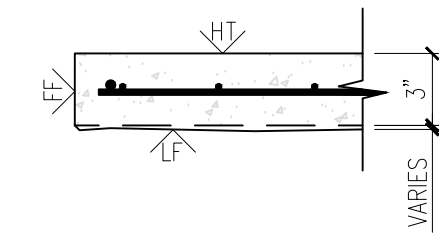
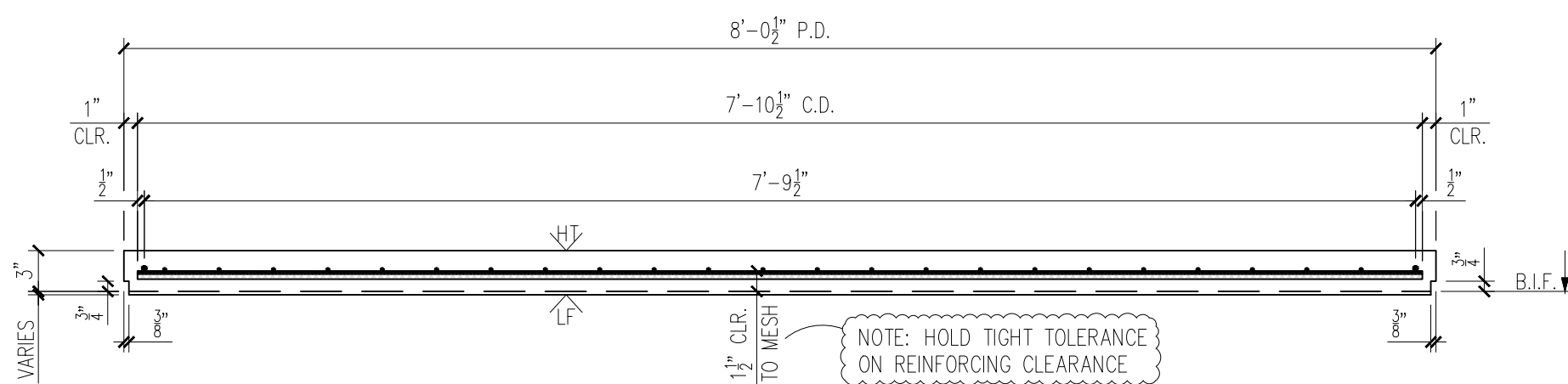
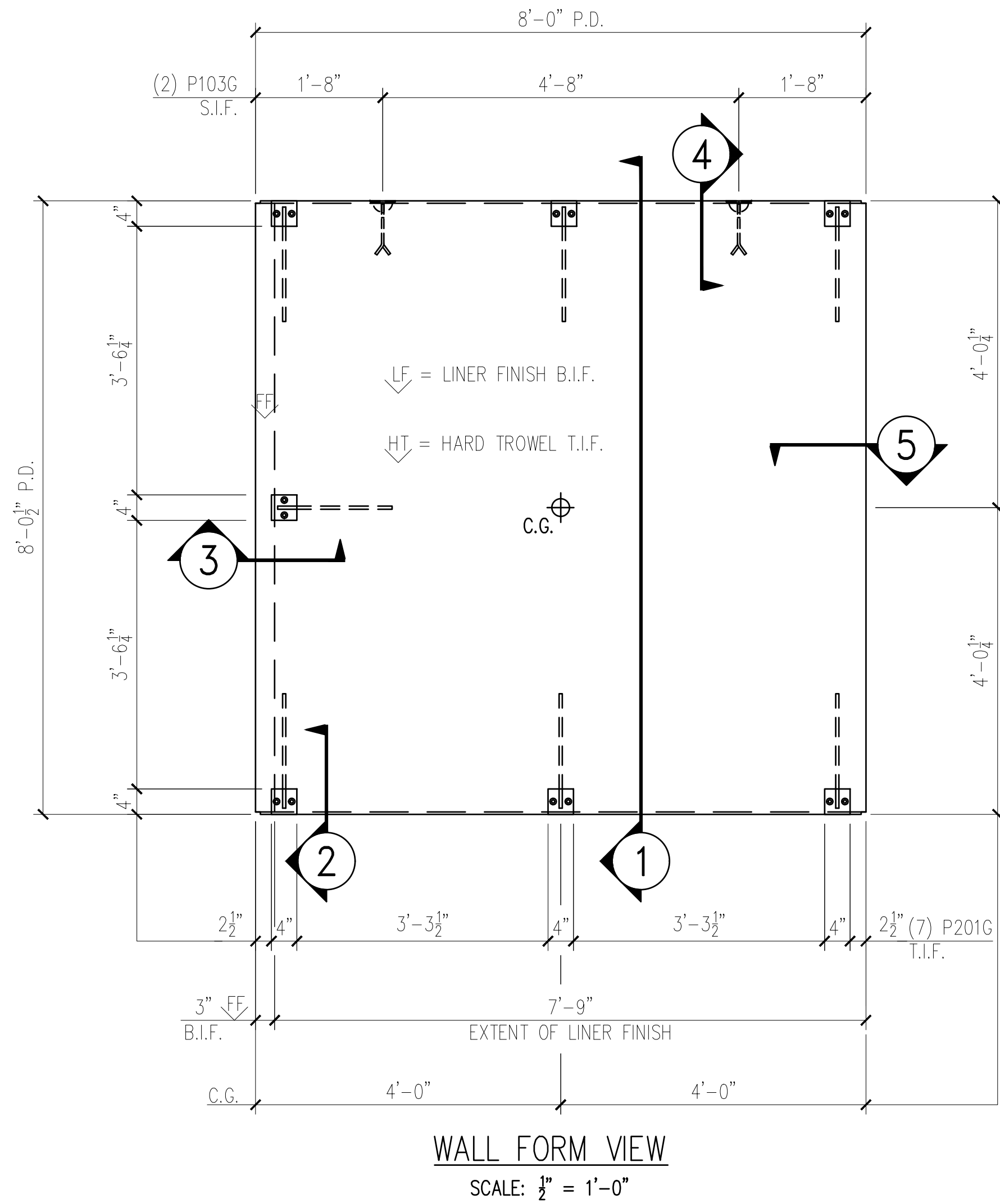


25-3415B - LEFT HAND
Fairbanks Softball & Baseball Dugouts
Product ID - CVW
Wall - WP-04
Weight - 2,615 LBS Each
1 Required



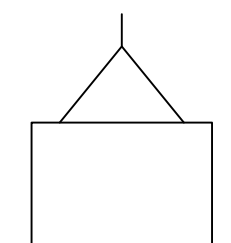
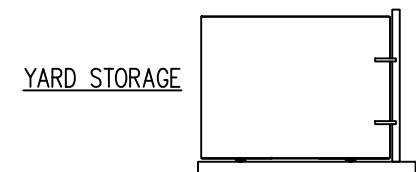
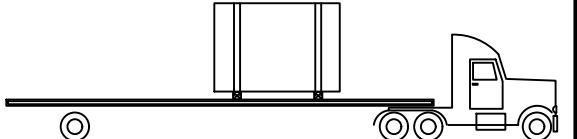
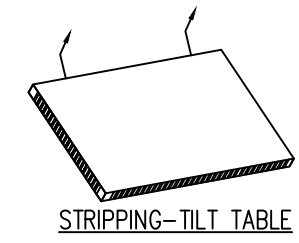
MESSAGE CENTER

- REFER TO DETAILS FOR REINFORCEMENT/CABLE PLACEMENT
- SHOP TICKET SHOWS EXTERIOR FACE OF PANEL CAST FACE DOWN

CHECKED BY: _____ DATE: _____
 APPROVED BY: _____ DATE: _____

BILL OF MATERIALS		
MARK #	DESCRIPTION	QTY
P201G	A36 STEEL 4"x4"x1/2" W/(2) 8"Øx1 1/2" HAS W/ 1'-4" BENT REBAR (GALV.)	7
P103G	2 TON RL-4 TECH ERECTION ANCHOR (79527SP) (GALV.)	2

HANDLING INSTRUCTIONS



CONCRETE INSTRUCTIONS

CONCRETE RELEASE @ 2,500 P.S.I.
 CONCRETE @ 28 DAYS: 5,000 P.S.I.
 POST-TENSION @ 3,500 P.S.I.

CONCRETE MIXES

MIX	VOLUME	C.Y.
CONCRETE - GRAY	VOLUME =	0.64 C.Y.
CONCRETE - MIX 1	VOLUME =	- C.Y.
CONCRETE - MIX 2	VOLUME =	- C.Y.
SOFT SOUND	VOLUME =	- C.Y.
TOTALS	VOLUME =	0.64 C.Y.
WEIGHT:		2,615 LBS.

FINISHING INSTRUCTIONS

LF = LINER FINISH
 HT = HARD TROWEL FINISH
 FF = FORM FINISH

Dimension	SQ.FT.(T.I.F.)
L = 8'-0"	= 64.3
W = 8'-0 1/2"	= -
D = 3"	= -

CONTROL NUMBERS:

-
 -

PRODUCT	SALES ORDER NUMBER
ESW BUILDING	-
SHEET NUMBER	NUMBER REQUIRED
1 OF 2	1

REV	INI.	DESCRIPTION	DATE
1	-	-	-
2	-	-	-
3	-	-	-
4	-	-	-
5	-	-	-

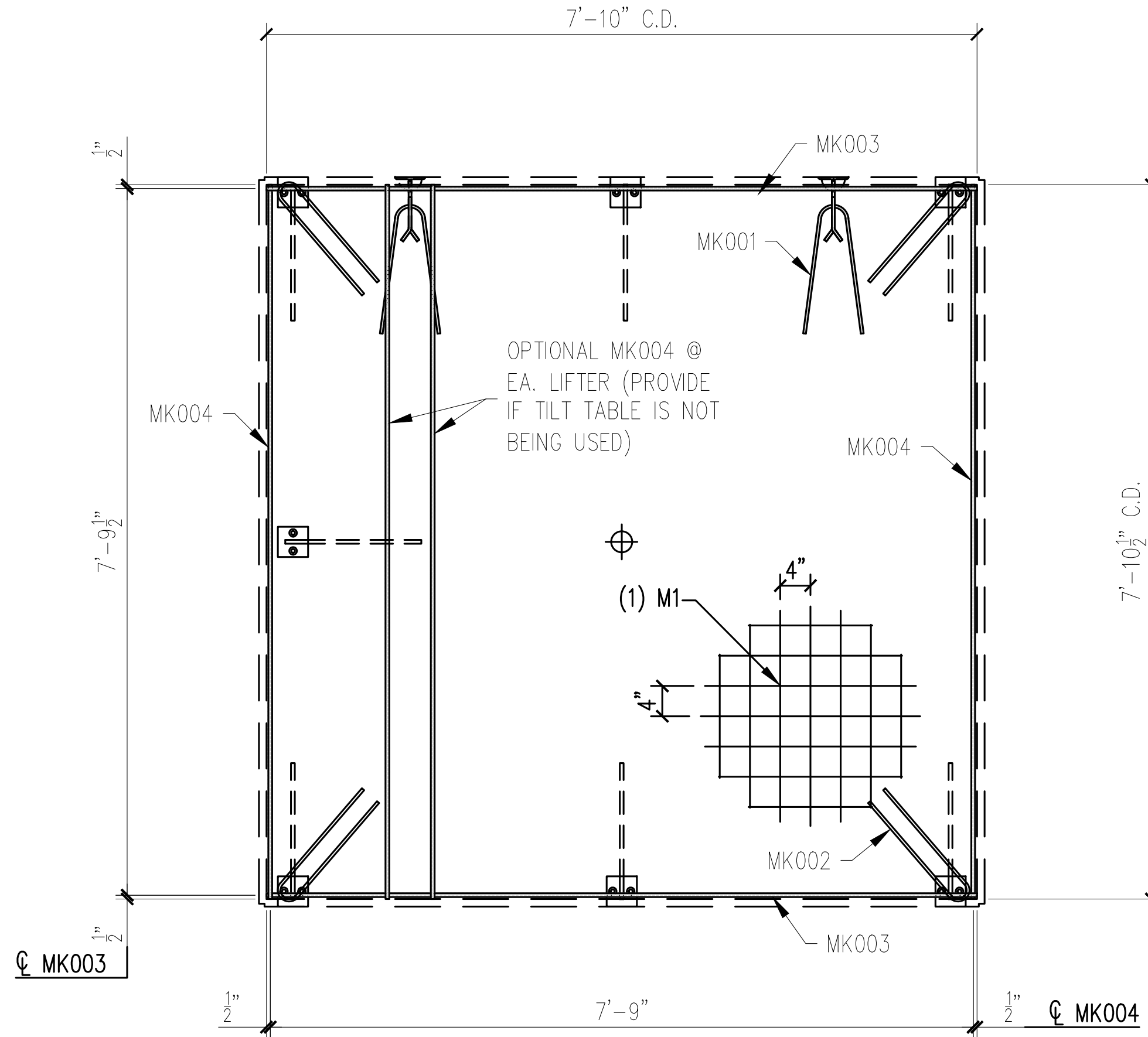
PROJECT: 38'x8'x8' EASI-SET DUGOUT
 FAIRBANKS DUGOUTS
 MILFORD CENTER, OH
 CONTRACTOR: LEVAN'S EXCAVATING, INC.

SCALE: NTS
 DRAWN BY: FTL
 CHECK BY: WCR
 ISSUE DATE: 12.11.25
 PIECE MARK: WP-04

EASI-SET® WORLDWIDE
 5119 Catlett Rd. • Midland, VA 22728 • info@EasiSet.com
 www.EasiSet.com • 800-547-4045 • Fax 540-439-2541

25-3415B - LEFT HAND
Fairbanks Softball & Baseball Dugouts
Product ID - CVW
Wall - WP-04
Weight - 2,615 LBS Each
1 Required

SHOP NOTE:
 DIMENSIONS PROVIDED ARE PULLED FROM EDGE OF
 CAGE TO CENTERLINE OF REBAR AND TO CENTER
 OF REBAR TO CENTER OF REBAR



WALL REINFORCING VIEW
 SCALE: 1/2" = 1'-0"

REINFORCING SCHEDULE		
MARK #	DESCRIPTION	QTY.
MK001	#3 X 3'-0"	2
MK002	#3 X 3'-1"	4
MK003	#3 X 7'-10"	2
MK004	#3 X 7'-10 1/2"	2
MESH SCHEDULE		
MARK #	DESCRIPTION	QTY.
M1	W4XW4 4"x4" WWF 7'-10 1/2" x 7'-10"	1

EASI-SET® WORLDWIDE
 5119 Catlett Rd. • Midland, VA 22728 • info@EasiSet.com
 www.EasiSet.com • 800-547-4045 • Fax 540-439-2541

REV	INI.	DESCRIPTION	DATE
△	-	-	-
△	-	-	-
△	-	-	-
△	-	-	-

- NOTES:
1. TRIM PLASTIC SHEATH AT BOTH ENDS OF THE PT CABLE TO FIT BETWEEN U-5 ANCHOR PLATES
 2. CONSTRUCT REBAR-MESH CAGE ACCORDING TO THE DRAWINGS. SECURE LIFTING APPARATUS TO FORM AND ADD PROPER REINFORCEMENT. PLACE REBAR-MESH CAGE AND HAIRPINS AT INSERTS WITH PROPER CLEARANCES (PER DRAWINGS).
 3. PLACE AND SECURE PT CABLE AS INDICATED ON THE DRAWINGS (REINFORCING VIEW)

MESSAGE CENTER

1. REFER TO DETAILS FOR REINFORCEMENT/CABLE PLACEMENT

2. SUPPLEMENTAL STEEL FOR STRIPPING AND HANDLING MAY BE ADDED AS REQUIRED.

CHECKED BY: DATE:
 APPROVED BY: DATE:

PRODUCT	SALES ORDER NUMBER
ESW BUILDING	-
SHEET NUMBER	NUMBER REQUIRED
2 OF 2	1

PROJECT: 38'x8' EASI-SET DUGOUT
 FAIRBANKS DUGOUTS
 MILFORD CENTER, OH
 CONTRACTOR: LEVAN'S EXCAVATING, INC.

SCALE	NTS
DRAWN BY	FTL
CHECK BY	WCR
ISSUE DATE	12.11.25
PIECE MARK	WP-04