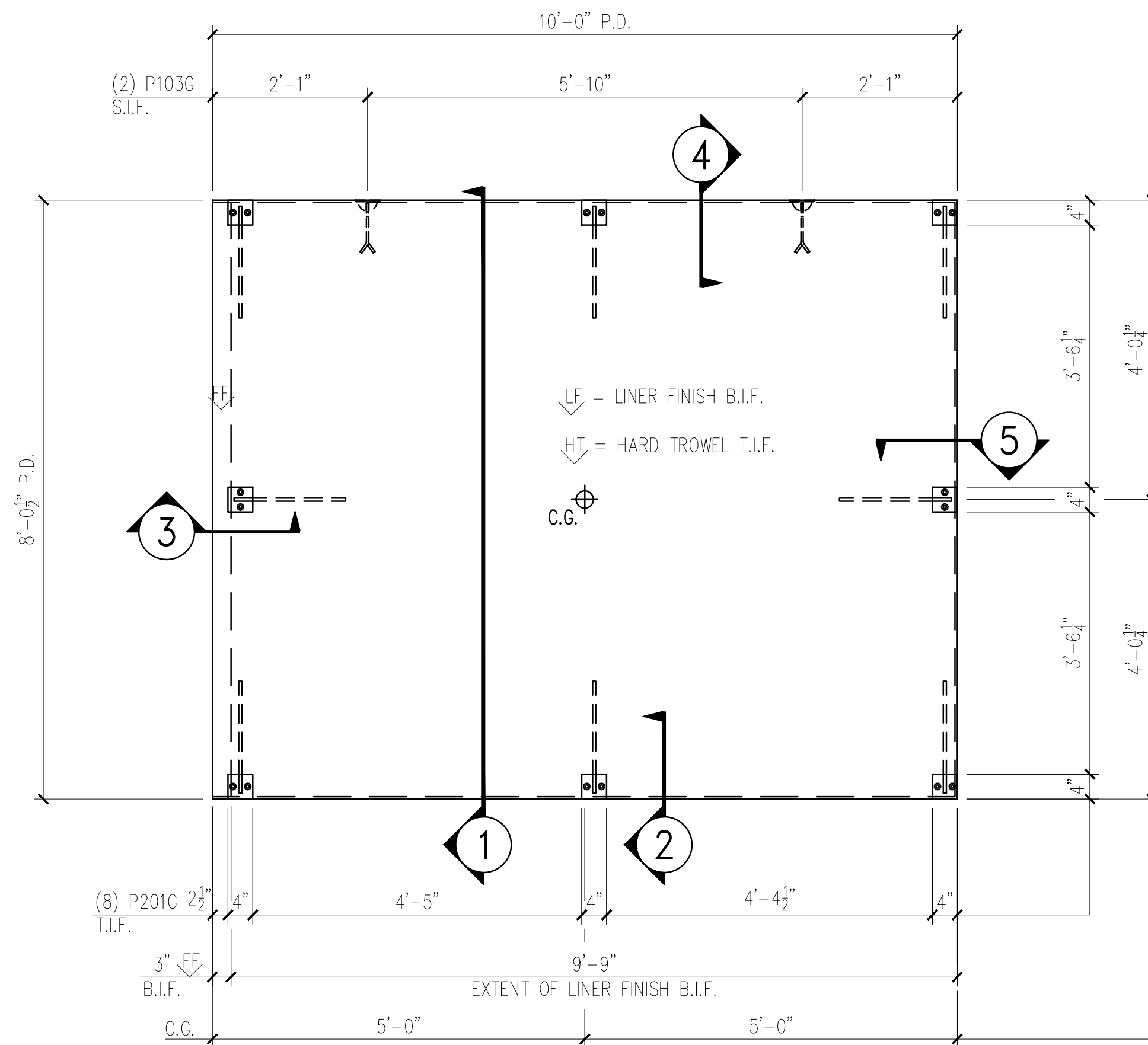


25-3415B - LEFT HAND
Fairbanks Softball & Baseball Dugouts
Product ID - CVW
Wall - WP-02
Weight - 3,260 LBS Each
1 Required



WALL FORM VIEW
 SCALE: 1/2" = 1'-0"

BILL OF MATERIALS		
MARK #	DESCRIPTION	QTY.
P201G	A36 STEEL 4"x4"x1/2" W/(2) 8"x1 1/2" HAS W/ 1'-4" BENT REBAR (GALV.)	8
P103G	2 TON RL-4 TECH ERECTION ANCHOR (79527SP) (GALV.)	2

HANDLING INSTRUCTIONS

STRIPPING-TILT TABLE

SHIPPING

YARD STORAGE

REV	INI.	DESCRIPTION	DATE
1	-	-	-
2	-	-	-
3	-	-	-
4	-	-	-

CONCRETE INSTRUCTIONS

CONCRETE RELEASE @: 2,500 P.S.I.
 CONCRETE @ 28 DAYS: 5,000 P.S.I.
 POST-TENSION @: 3,500 P.S.I.

CONCRETE MIXES

MIX	VOLUME	C.Y.
CONCRETE - GRAY	0.80	C.Y.
CONCRETE - MIX 1	-	C.Y.
CONCRETE - MIX 2	-	C.Y.
SOFT SOUND	-	C.Y.
TOTALS	0.80	C.Y.

WEIGHT: 3,260 LBS.

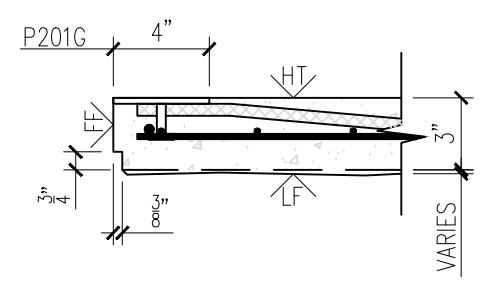
FINISHING INSTRUCTIONS

LF = LINER FINISH
 HT = HARD TROWEL FINISH
 FF = FORM FINISH

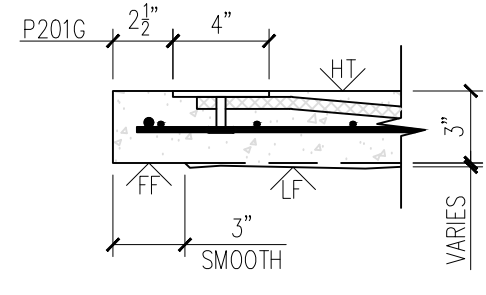
Dimension	SQ.FT.(T.I.F.)
L = 8'-0 1/2"	80.14
W = 10'-0"	-
D = 3"	-

CONTROL NUMBERS:

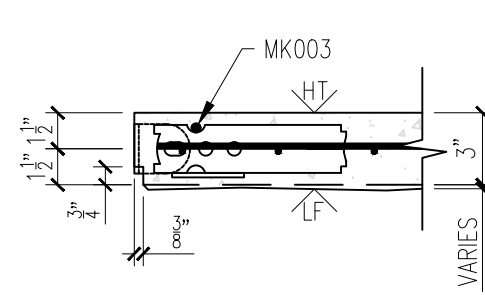
PRODUCT	SALES ORDER NUMBER
ESW BUILDING	-
SHEET NUMBER	NUMBER REQUIRED
1 OF 2	1



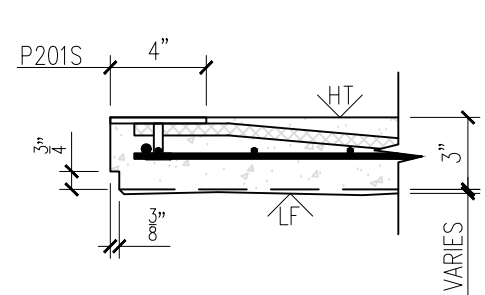
2



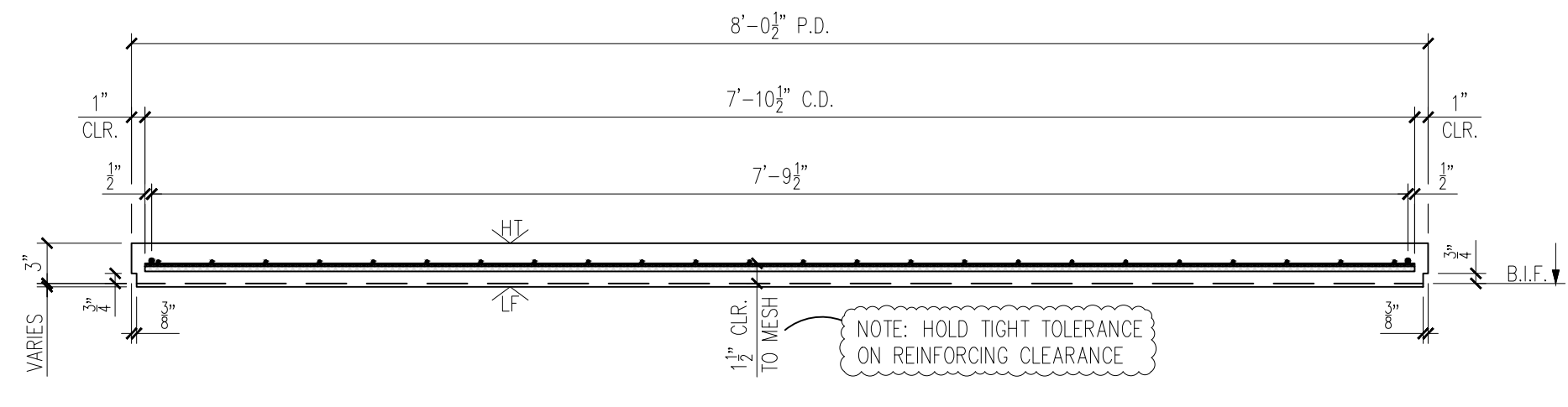
3



4



5



1

MESSAGE CENTER

1. REFER TO DETAILS FOR REINFORCEMENT/CABLE PLACEMENT

2. SHOP TICKET SHOWS EXTERIOR FACE OF PANEL CAST FACE DOWN

CHECKED BY: _____ DATE: _____

APPROVED BY: _____ DATE: _____

EASI-SET® WORLDWIDE
 5119 Catlett Rd. • Midland, VA 22728 • info@EasiSet.com
 www.EasiSet.com • 800-547-4045 • Fax 540-439-2541

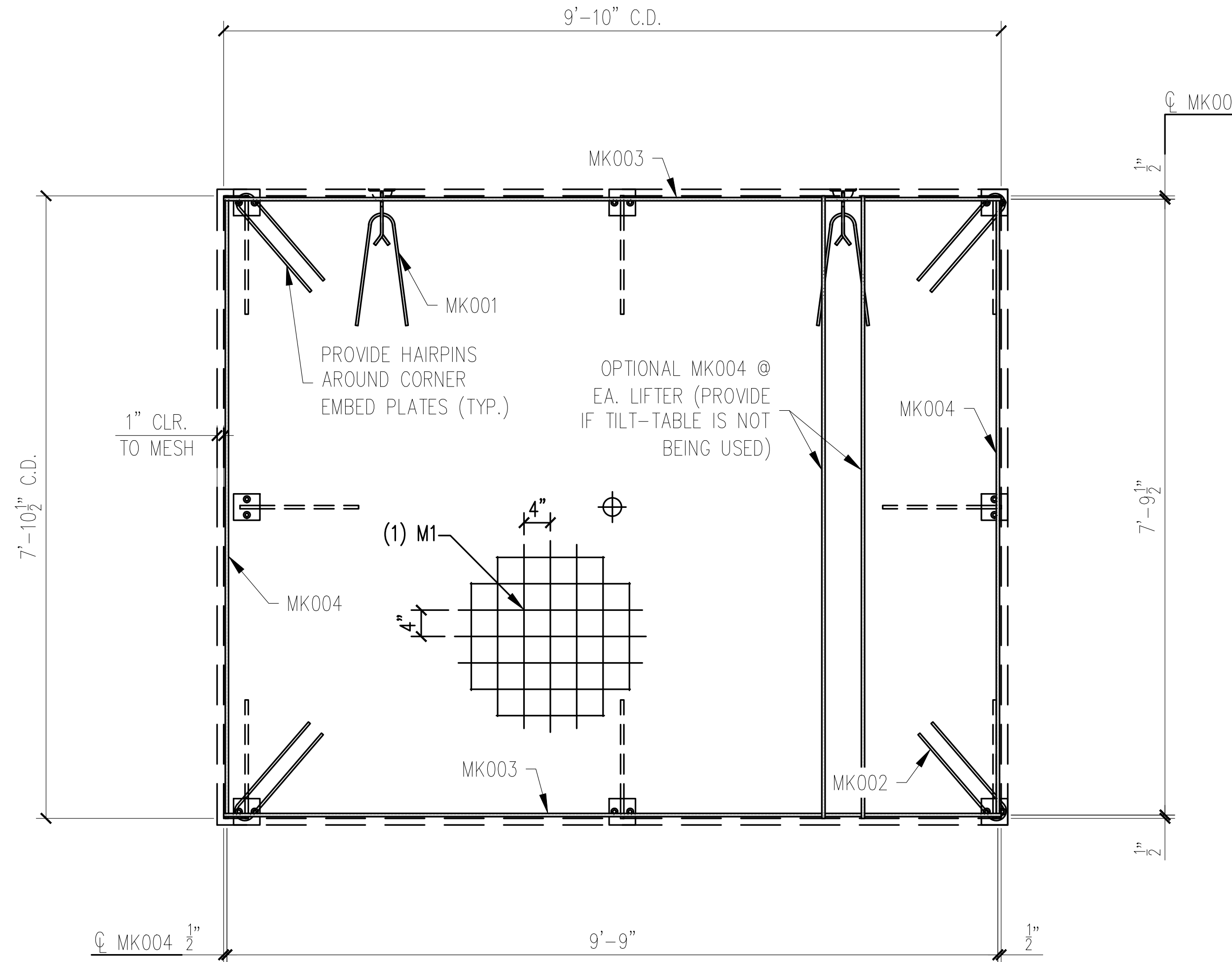
REV	INI.	DESCRIPTION	DATE
1	-	-	-
2	-	-	-
3	-	-	-
4	-	-	-

PROJECT: 38'x8'x8' EASI-SET DUGOUT
 FAIRBANKS DUGOUTS
 MILFORD CENTER, OH
 CONTRACTOR: LEVAN'S EXCAVATING, INC.

SCALE NTS
DRAWN BY FTL
CHECK BY WCR
ISSUE DATE 12.11.25
PIECE MARK WP-02

25-3415B - LEFT HAND
Fairbanks Softball & Baseball Dugouts
Product ID - CVW
Wall - WP-02
Weight - 3,260 LBS Each
1 Required

SHOP NOTE:
 DIMENSIONS PROVIDED ARE PULLED FROM EDGE OF
 CAGE TO CENTERLINE OF REBAR AND TO CENTER
 OF REBAR TO CENTER OF REBAR



WALL REINFORCING VIEW
 SCALE: $\frac{1}{2}'' = 1'-0''$

REINFORCING SCHEDULE		
MARK #	DESCRIPTION	QTY
MK001	#3 X 3'-0"	2
MK002	#3 X 3'-1"	4
MK003	#3 X 9'-10"	2
MK004	#3 X 7'-10 1/2"	2

MESH SCHEDULE		
MARK #	DESCRIPTION	QTY
M1	W4XW4 4"x4" WWF 9'-10" x 7'-10 1/2"	1

EASI-SET® WORLDWIDE
 5119 Catlett Rd. • Midland, VA 22728 • info@EasiSet.com
 www.EasiSet.com • 800-547-4045 • Fax 540-439-2541

DATE	DESCRIPTION	REV			
		INI.	1	2	3
-	-	-	-	-	-

- NOTES:
1. TRIM PLASTIC SHEATH AT BOTH ENDS OF THE PT CABLE TO FIT BETWEEN U-5 ANCHOR PLATES
 2. CONSTRUCT REBAR-MESH CAGE ACCORDING TO THE DRAWINGS. SECURE LIFTING APPARATUS TO FORM AND ADD PROPER REINFORCEMENT. PLACE REBAR-MESH CAGE AND HAIRPINS AT INSERTS WITH PROPER CLEARANCES (PER DRAWINGS).
 3. PLACE AND SECURE PT CABLE AS INDICATED ON THE DRAWINGS (REINFORCING VIEW)

MESSAGE CENTER

1. REFER TO DETAILS FOR REINFORCEMENT/CABLE PLACEMENT
2. SUPPLEMENTAL STEEL FOR STRIPPING AND HANDLING MAY BE ADDED AS REQUIRED.

CHECKED BY: _____ DATE: _____
 APPROVED BY: _____ DATE: _____

PRODUCT	SALES ORDER NUMBER
ESW BUILDING	-
SHEET NUMBER	NUMBER REQUIRED
2 OF 2	1

PROJECT: 38'x8' EASI-SET DUGOUT
 FAIRBANKS DUGOUTS
 MILFORD CENTER, OH
 CONTRACTOR: LEVAN'S EXCAVATING, INC.

SCALE: NTS

DRAWN BY: FTL

CHECK BY: WCR

ISSUE DATE: 12.11.25

PIECE MARK: WP-02