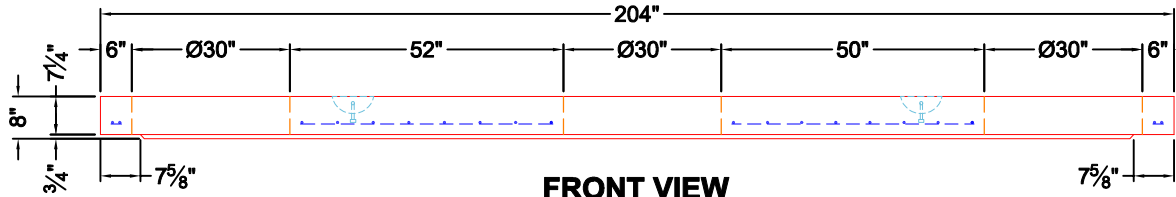


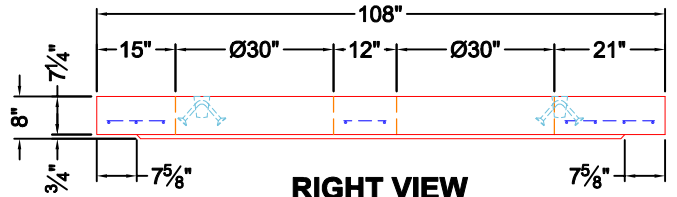
TOP VIEW

- GENERAL NOTES:**
1. DESIGN LOADING – AASHTO HS-20.
 2. DESIGN SPECIFICATIONS – ACI 318-14.
 3. CONCRETE: 5,000 PSI AT 28 DAYS.
 4. REINFORCING: AS SHOWN BELOW (GRADE 60)
SEE CONTECH DRAWING RS-05 FOR ADDITIONAL REINFORCEMENT INFORMATION.
 5. WEIGHT: 13,370 LBS.


4 EA. CONAC 5CA14 ANCHORS
CAST IN AS SHOWN.



FRONT VIEW



RIGHT VIEW

<p>PRODUCTION WORK ORDER</p>		<p>PRODUCT I.D.: CVT</p>	<p>DESCRIPTION: 108" X 204" X 8" THICK TOP SLAB</p>	
	<p>QUALITY CONTROL CHECKLIST</p> <p><input type="checkbox"/> ALL DIMENSIONS CORRECT.</p> <p><input type="checkbox"/> LIFTERS INSTALLED.</p> <p><input type="checkbox"/> OPENING CORRECT LOCATION.</p> <p><input type="checkbox"/> REINFORCING CORRECT.</p> <p><input type="checkbox"/> SURFACE QUALITY ACCEPTABLE.</p> <p><input type="checkbox"/> EDGES CHAMFERED.</p> <p><input type="checkbox"/> ALL PATCHWORK ACCEPTABLE.</p>		<p>CUSTOMER: CONTECH ENGINEERED SOLUTIONS, LLC</p>	
	<p>PRODUCT VIEW: RIGHT SIDE UP</p>		<p>PROJECT: 833965 CARLOCK DEALERSHIP</p>	
	<p>PLANT: BEAVER DAM, KY.</p>		<p>STRUCTURE: KRACKEN KVOV0816-10</p>	
	<p>WEIGHT: 13,370 LBS.</p>		<p>ORDER NO: 25-3384</p>	
	<p>TOP SECTION JOINT: N/A</p>		<p>PC: T. SEKULA DRAWING: J. COPPAGE</p>	
<p>BASE SECTION JOINT: N/A</p>		<p>DATE: 9/17/25 SCALE: NTS PG. 1 of 1</p>		
<p>QC CHECK INITIALS:</p>				

THIS DRAWING IS THE PROPERTY OF INFRASTRUCTURE PRECAST, INC. ANY USE OR DUPLICATION OF THIS DRAWING WITHOUT PRIOR AUTHORIZATION IS STRICTLY PROHIBITED.

25-3384
 833965 Carlock Dealership
 KRACKEN KVOV0816-10

DESIGN NOTES

AS PROVIDED BY EOR:

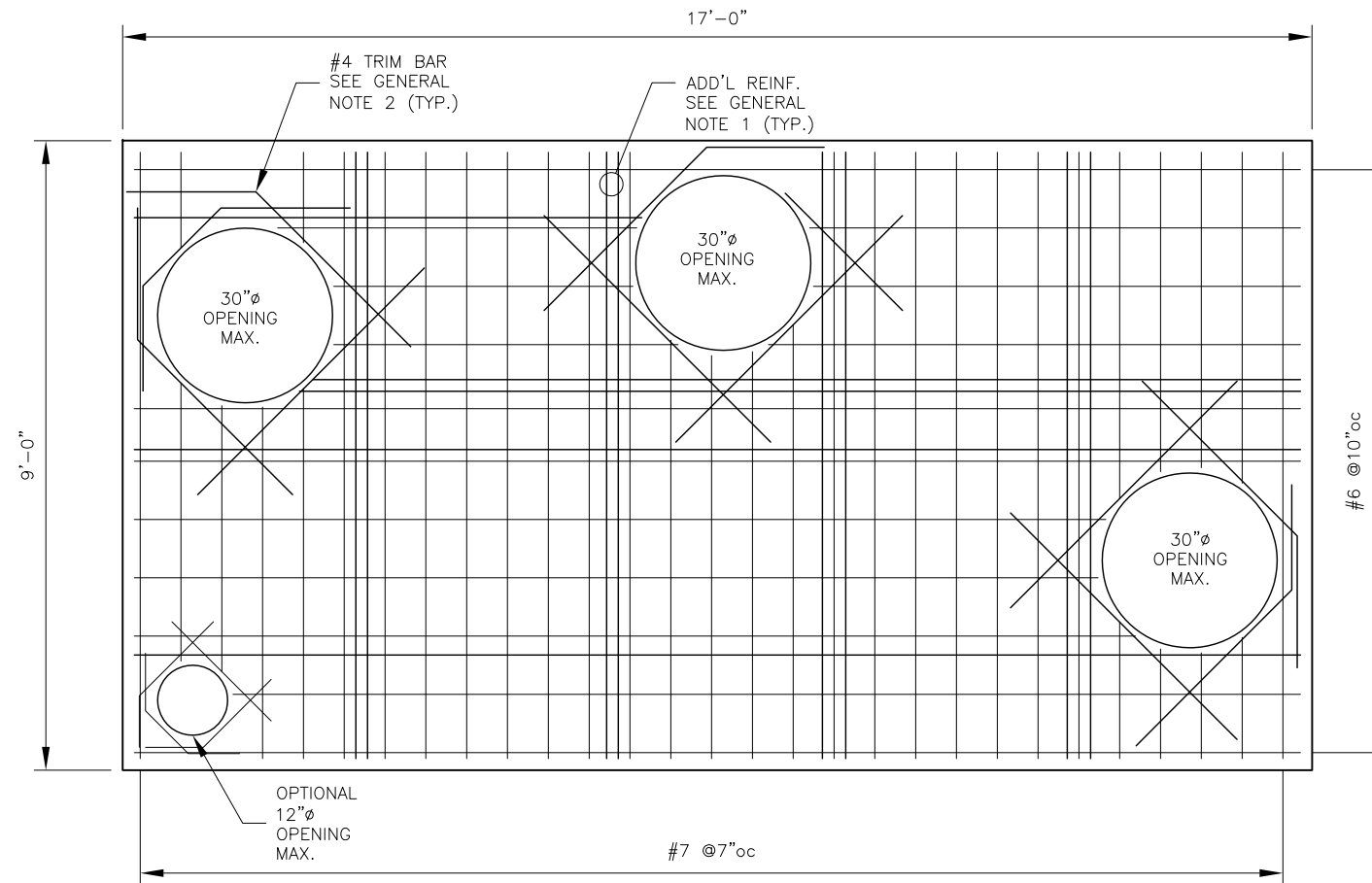
1. DESIGN IN ACCORDANCE WITH AASHTO 17TH ED. FOR HS-20 LIVE LOAD.

ASSUMPTIONS: (TO BE VERIFIED BY EOR)

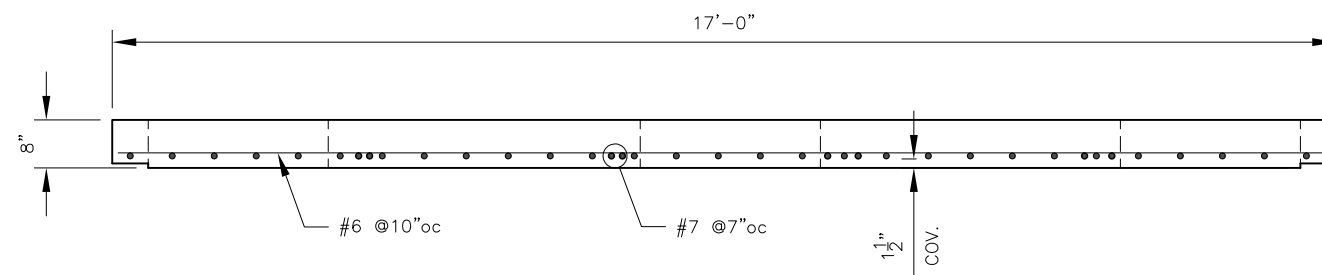
1. EARTH COVER = GREATER THAN 2'- 10'
2. UNIT WEIGHT OF SOIL = 120 PCF
3. BAR COVER = 1 1/2" U.N.O.
4. f'c @ 28 DAYS = 5,000 PSI
5. REINFORCEMENT = BAR PER ASTM A615, GRADE 60

GENERAL NOTES:

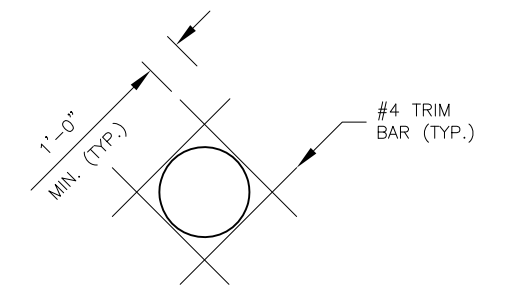
1. PROVIDE ADDITIONAL REINFORCING AROUND OPENINGS EQUAL TO THE BARS INTERRUPTED, HALF EACH SIDE. ADDITIONAL BARS TO BE IN THE SAME PLANE.
2. TRIM OPENINGS WITH DIAGONAL #4 BARS, EXTEND BARS MINIMUM 12" BEYOND OPENINGS, BEND BARS AS REQUIRED TO MAINTAIN BAR COVER.
3. THIS IS A REINFORCING SUMMARY, REFERENCE CONTECH ENGINEERED SOLUTIONS DRAWINGS FOR; OPENING SIZES, QUANTITY LOCATION AND OTHER INFORMATION.
4. LIFTING AND HANDLING BY OTHERS.



PLAN VIEW
(TOP SLAB)



TYPICAL REINFORCING SECTION



OPENING DETAIL
(ROUND SHOWN, SQUARE OR RECT. SIMILAR)

PREPARED BY: 860 HOOPER ROAD, ENDWELL, NY 13760-1564 PHONE(607)231-6600 FAX(607)231-6650			PREPARED FOR: 		
REV. NO.	DATE	REVISION	DATE: 5/12/20	SHEET TITLE: REINFORCING SUMMARY	DRWN BY: GJP
			SCALE: N.T.S.		CKD BY: RDB
			PROJECT: SFPD0816 STORMFILTER TOP SLABS		
			CONTRACTOR: DELTA PROJ. NO.: 2020.025.028	DWG. I.D.: RS-05	SHT. NO.: