

Job Name: 25-3335 Palisades Whiskey Co.  
 Job Location: Richmond, KY  
 Contractor: Buzick Construction

Plant: Beaver Dam

Tech: C.Russ

10/21/2025 12:25:40 PM

PC: C.Goff



**Structure ID: B2**

**P1 BX24240606VF**

**BOX BASE 6inW, 6inF, Variable Ht F/n**

- P2) 24" x 24" - CASTING HEIGHT - 4"
- P1) 24" x 24" - BOX BASE 6inW, 6inF, Variable Ht F/n - 20"
- 1) CASTING - HOE 280T F/G
- 1) 24" x 24" - SGL 1"x14.5' Butyl
- 1) DOGHOUSE INVRTD - 20"x20"
- 1) Hole - 6

0 lb  
 1654 lb  
 182 lb  
 0 lb  
 0 lb  
 0 lb  
 -----  
 Structure Total: 1836 lb

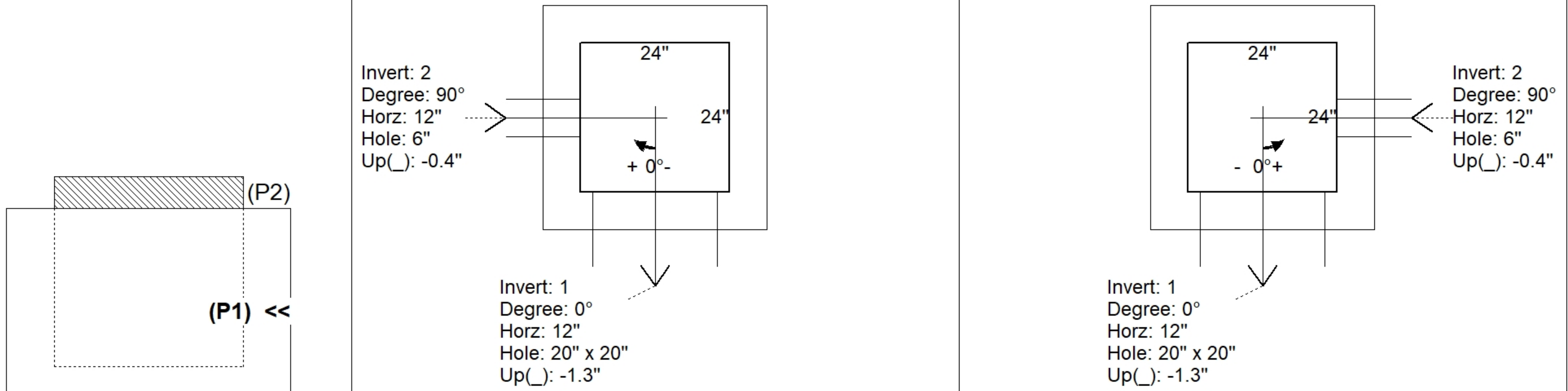
- Structure Notes:**
1. PER ASTM C913 SPECIFICATIONS.
  2. CONCRETE = 4,000 PSI AT 28 DAYS.
  3. NO INVERT CHANNEL.
  4. HOE 280T F/G BY ICAST
  5. REINFORCING PER ASTM A615 (GRADE 60).  
 - WALLS (As .12) #5 BARS AT 12" C.C.E.W.  
 - FLOOR (As .12) #5 BARS AT 12" C.C.E.W.

Rim: 791.5' Rim to Invert: 2' Slack: 0" Sump: 0" Step Position:

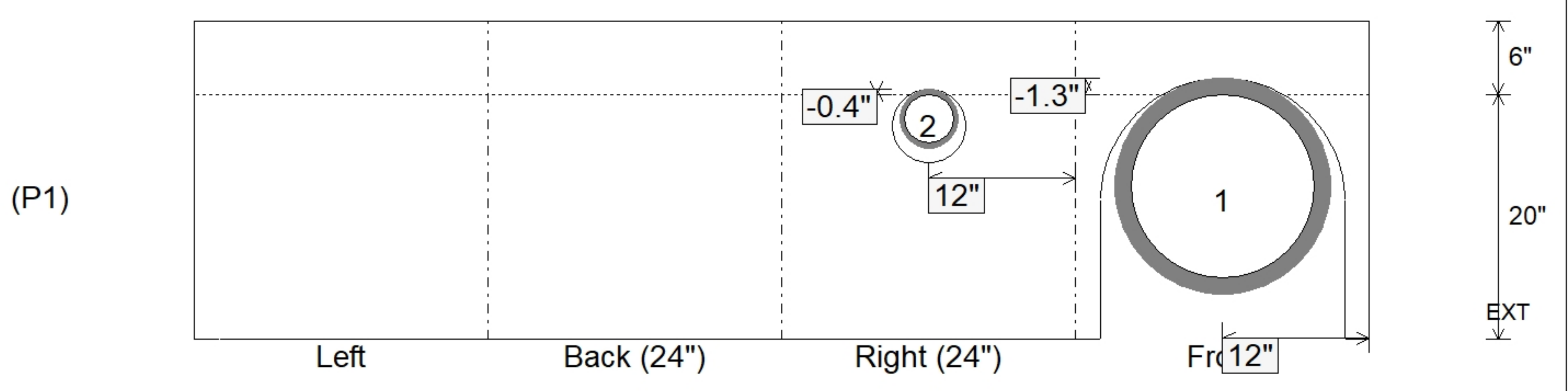
Position	Elev	Angle	Ext. (cw)	Pipe	Pipe OD	Connector	Hole	Horz Size	Up ( )	Offset
Invert 1	789.5'	0°	18"	15" HDPE	17.6"	DOGHOUSE INVRTD 20"x20"	20" x 20"	20"	-1.3"	0"
Invert 2	789.5'	90°	18"	4" HDPE	4.8"	Hole 6	6"	6"	-0.4"	0"
Invert 3										
Invert 4										
Invert 5										
Invert 6										
Invert 7										
Invert 8										

RIGHT-SIDE UP VIEW (int. dimensions)

UPSIDE-DOWN VIEW (int. dimensions)



INSIDE WALL DIMENSIONS



Coating (Int): Coating (Ext):	Seam Up: Flat Seam Dn: n/a	Wall Thickness: 6" Floor Height: 6"	Height (Int): 20" Height (Ext): 26"	Weight (Net): 1654 lb Volume (Net): 0.42cu.yd
----------------------------------	-------------------------------	--	--	--