

Structure ID: B1

P1 BX24240606VF

BOX BASE 6inW, 6inF, Variable Ht F/n

- P2) 24" x 24" - CASTING HEIGHT - 4"
- P1) 24" x 24" - BOX BASE 6inW, 6inF, Variable Ht F/n - 28"
- 1) CASTING - HOE 280T F/G
- 1) 24" x 24" - SGL 1"x14.5' Butyl
- 2) Hole - 20

0 lb
 2028 lb
 182 lb
 0 lb
 0 lb

 Structure Total: 2210 lb

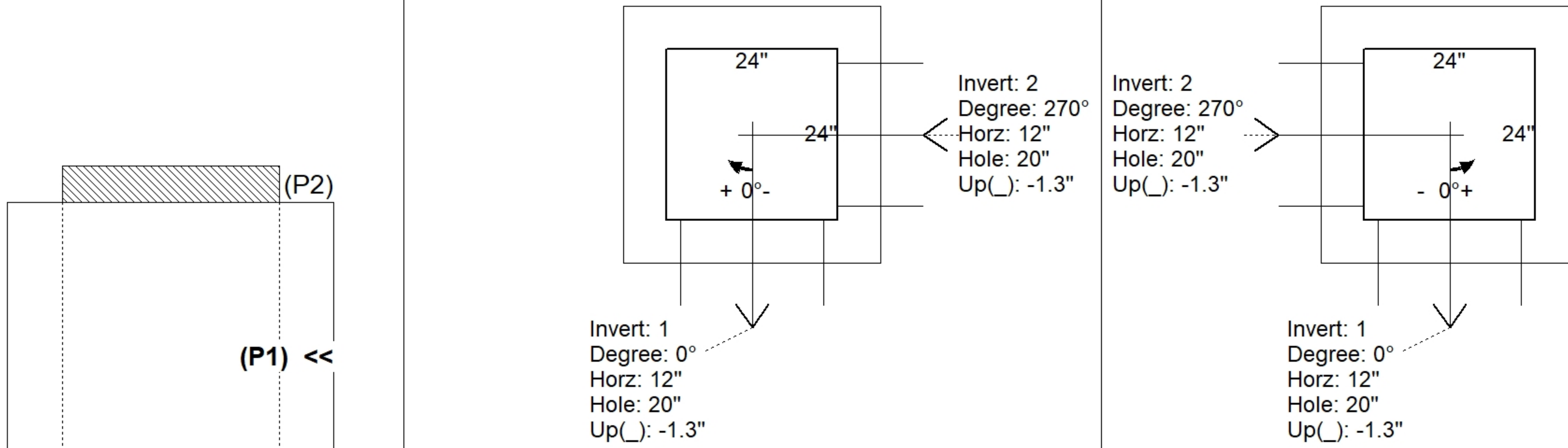
- Structure Notes:
1. PER ASTM C913 SPECIFICATIONS.
 2. CONCRETE = 4,000 PSI AT 28 DAYS.
 3. NO INVERT CHANNEL.
 4. HOE 280T F/G BY ICAST
 5. REINFORCING PER ASTM A615 (GRADE 60).
 - WALLS (As .12) #5 BARS AT 12" C.C.E.W.
 - FLOOR (As .12) #5 BARS AT 12" C.C.E.W.

Rim: 791.75' Rim to Invert: 2.67' Slack: 0.04" Sump: 0" Step Position:

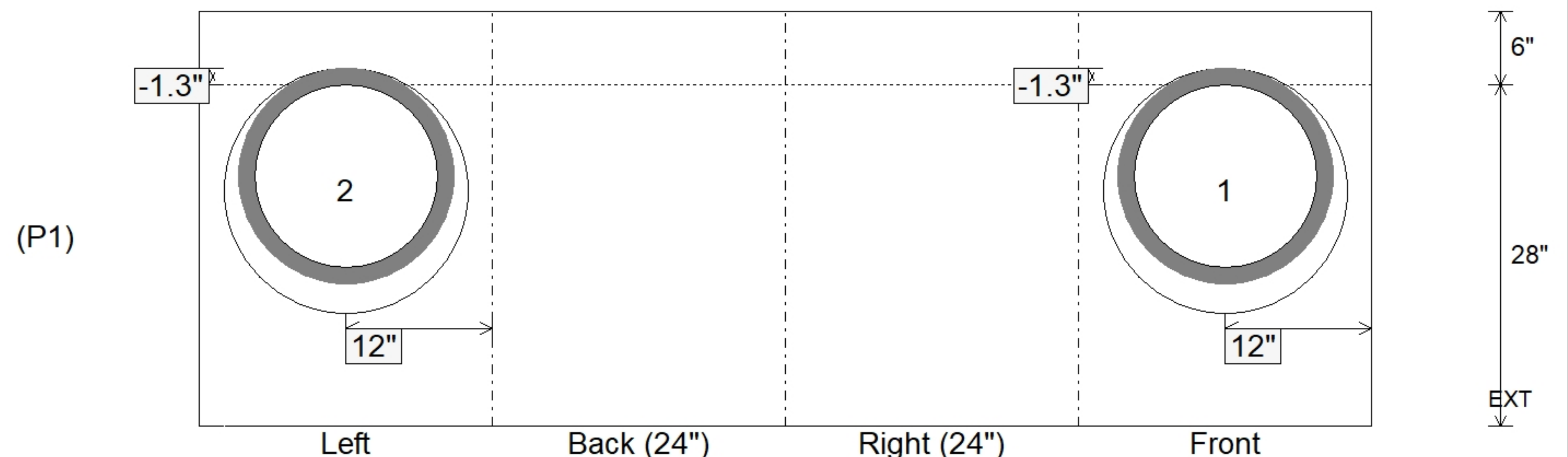
Position	Elev	Angle	Ext. (cw)	Pipe	Pipe OD	Connector	Hole	Horz Size	Up ()	Offset
Invert 1	789.08'	0°	18"	15" HDPE	17.6"	Hole 20	20"	20"	-1.3"	0"
Invert 2	789.08'	270°	18"	15" HDPE	17.6"	Hole 20	20"	20"	-1.3"	0"
Invert 3										
Invert 4										
Invert 5										
Invert 6										
Invert 7										
Invert 8										

RIGHT-SIDE UP VIEW (int. dimensions)

UPSIDE-DOWN VIEW (int. dimensions)



INSIDE WALL DIMENSIONS



Coating (Int):	Seam Up: Flat Seam Dn: n/a	Wall Thickness: 6" Floor Height: 6"	Height (Int): 28" Height (Ext): 34"	Weight (Net): 2028 lb Volume (Net): 0.52cu.yd
Coating (Ext):				