

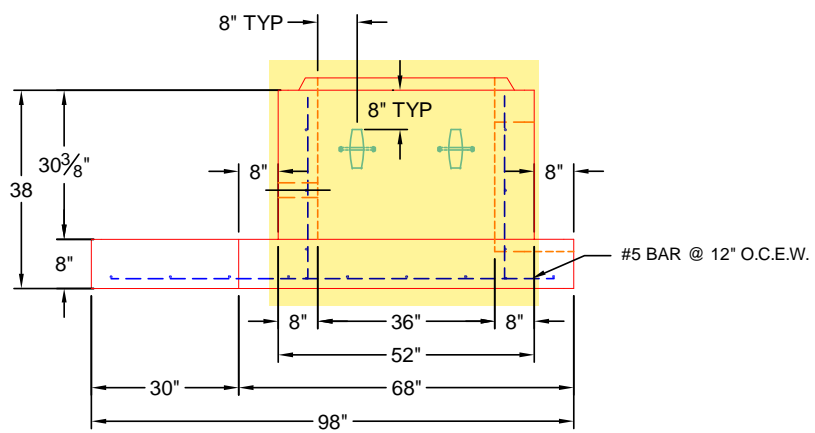
FIRST POUR 5,043 LBS

GENERAL NOTES

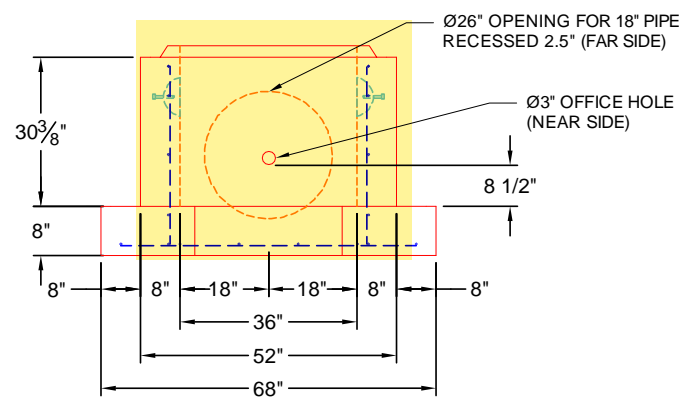
1. CONCRETE 28 DAY COMPRESSIVE STRENGTH OF 5000 PSI.
2. REINFORCING PER ASTM C-913
BASE #5 BAR @ 12" O.C.E.W.
WALLS #5 BAR @ 12" O.C.E.W.
3. VAULT JOINT TO BE SEALED WITH CONCRETE SEALANTS, INC. CS-102 ROLL BUTYL MASTIC (SUPPLIED BY ICAST).
4. WEIGHT:
BASE SECTION = 6,936 LBS
RISER SECTION = 3,903 LBS
TOTAL = 10,839 LBS
5. LVT-3636 TRASH RACK BY ICAST

TOP VIEW


DRILL & DOWEL # 5 BAR 8" C/C FOR FLANGE

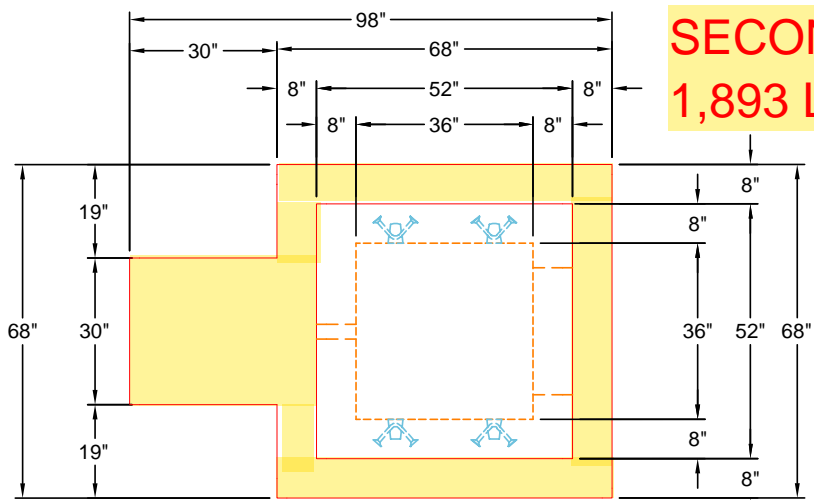


FRONT VIEW



RIGHT VIEW

PRODUCTION WORK ORDER		PRODUCT I.D.: BX3636-08	DESCRIPTION: 36" X 36" OCS BASE WITH FLANGE		
	QUALITY CONTROL CHECKLIST <input type="checkbox"/> ALL DIMENSIONS CORRECT. <input type="checkbox"/> LIFTERS INSTALLED. <input type="checkbox"/> OPENING CENTERED. <input type="checkbox"/> REINFORCING CORRECT. <input type="checkbox"/> SURFACE QUALITY ACCEPTABLE. <input type="checkbox"/> EDGES CHAMFERED. <input type="checkbox"/> ALL PATCHWORK ACCEPTABLE.	PRODUCT VIEW: RIGHT SIDE UP	CUSTOMER: BUZICK CONSTRUCTION		
		PLANT: BEAVER DAM, KY.	PROJECT: PALISADES WHISKEY COMPANY		
		WEIGHT: 6,936 LBS.	STRUCTURE: A-OCS1		
		TOP JOINT: N/A	ORDER NO: 25-3335		
		BOTTOM JOINT: BELL	PE: J.H. ROSS	DRAWING: C. RUSS	
		QC CHECK INITIALS:	DATE: 10/17/25	SCALE: NTS	PG. 1 of 1



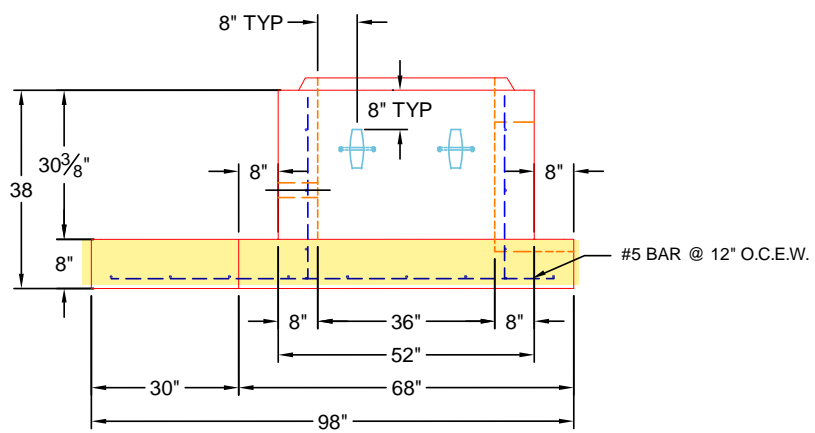
**SECONDARY POUR
1,893 LBS**

TOP VIEW

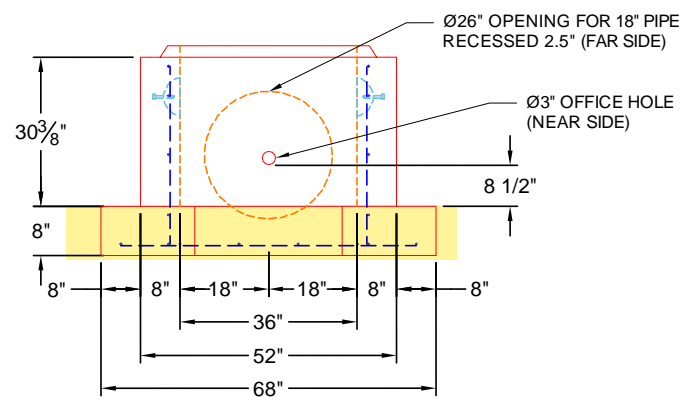
**DRILL & DOWEL # 5 BAR 8" C/C FOR
FLANGE**

GENERAL NOTES


1. CONCRETE 28 DAY COMPRESSIVE STRENGTH OF 5000 PSI.
2. REINFORCING PER ASTM C-913
BASE #5 BAR @ 12" O.C.E.W.
WALLS #5 BAR @ 12" O.C.E.W.
3. VAULT JOINT TO BE SEALED WITH CONCRETE SEALANTS, INC. CS-102 ROLL BUTYL MASTIC (SUPPLIED BY ICAST).
4. WEIGHT:
BASE SECTION = 6,936 LBS
RISER SECTION = 3,903 LBS
TOTAL = 10,839 LBS
5. LVT-3636 TRASH RACK BY ICAST



FRONT VIEW



RIGHT VIEW

PRODUCTION WORK ORDER		PRODUCT I.D.: BX3636-08	DESCRIPTION: 36" X 36" OCS BASE WITH FLANGE		
	QUALITY CONTROL CHECKLIST	PRODUCT VIEW: RIGHT SIDE UP	CUSTOMER: BUZICK CONSTRUCTION		
		PLANT: BEAVER DAM, KY.	PROJECT: PALISADES WHISKEY COMPANY		
		WEIGHT: 6,936 LBS.	STRUCTURE: A-OCS1		
		TOP JOINT: N/A	ORDER NO: 25-3335		
		BOTTOM JOINT: BELL	PE: J.H. ROSS	DRAWING: C. RUSS	
		QC CHECK INITIALS:	DATE: 10/17/25	SCALE: NTS	PG. 1 of 1