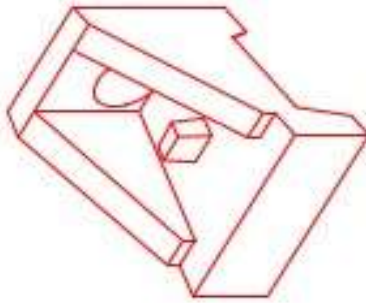


Structure ID: HW Row 1

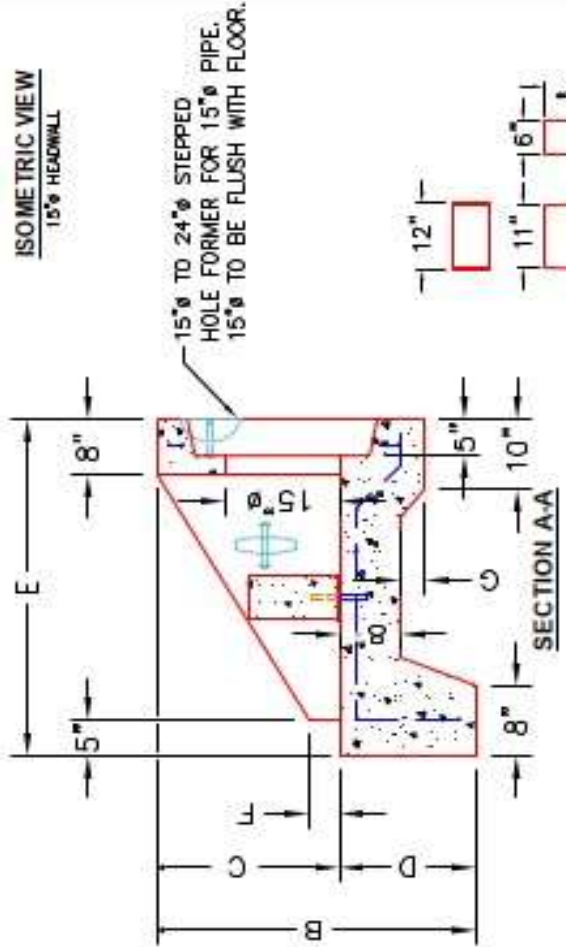
P1 HWSF15D

15" - SLOPED & FLARED HEADWALL w/DISS F/F

DIMENSIONS											
PIPE #	A	B	C	D	E	F	G	H	I	WEIGHT	DISSIPATORS
15"	2'-9"	3'-6"	2'-0"	1'-6"	4'-0"	3"	2'-8"	2'-0"	4'-9"	3,161 LBS.	1 EA.

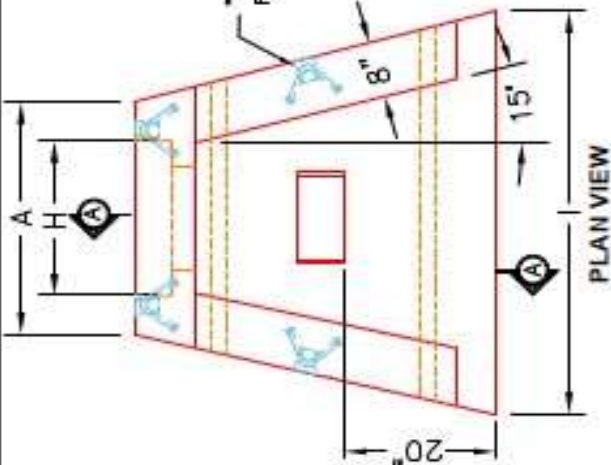


ISO METRIC VIEW
15" HEADWALL



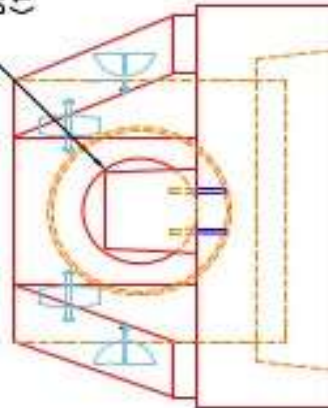
15" TO 24" STEPPED HOLE FORMER FOR 15" PIPE. 15" TO BE FLUSH WITH FLOOR.
 2-#5 BAR STUBS FOR POST MOUNTING TO HEADWALL FLOOR.
 DISSIPATOR BLOCK DETAIL

"A"-ANCHOR LIFTING SYSTEM FOR PLANT & FIELD HANDLING.



PLAN VIEW

12"x12"x6" ENERGY DISSIPATOR BLOCK (1 EA.).



FRONT ELEVATION

- NOTES:**
1. CONCRETE: 4500 PSI @ 28 DAYS.
 2. REINFORCING: #4 BAR @ 12" C/C E.W.-GRADE 60, (WITH 2" CONCRETE COVER MINIMUM)
 3. REINFORCING BARS TO BE TACK WELDED OR TIED.
 4. DRAWING TO BE USED IN CONJUNCTION WITH KYTC STD. DRAWING ROH-020-03 AND THE STANDARD SPECIFICATIONS FOR ROAD AND BRIDGE CONSTRUCTION.
 5. CHAMFER ON ALL EXPOSED EDGES.

DESCRIPTION: KYTC 15" SLOPED & FLARED HEADWALL W/DISSIPATORS	PRODUCT I.D.: HWSF15D
CUSTOMER: STOCK	PRODUCT VIEW: RIGHT SIDE UP
PROJECT: STOCK INVENTORY	PLANT: BEAVER DAM, KY.
STRUCTURE ID.: N/A	WEIGHT: 3,161 LBS.
QUOTE/SALES ORDER NO: N/A	TOP SECTION JOINT: N/A
CHECK: J.H. ROSS, PE	BASE SECTION JOINT: N/A
DRAWING: N. RICHARDS	DC CHECK INITIALS:
DATE: 09/06/22	SCALE: NTS
PG. 1 of 1	

PRODUCTION WORK ORDER	
QUALITY CONTROL CHECKLIST	
<input type="checkbox"/> ALL DIMENSIONS CORRECT.	
<input type="checkbox"/> LIFTERS INSTALLED.	
<input type="checkbox"/> STEPPED IF CORRECT SIZE.	
<input type="checkbox"/> REINFORCING CORRECT.	
<input type="checkbox"/> DISSIPATOR BLOCK INSTALLED.	
<input type="checkbox"/> EDGES CHAMFERED.	
<input type="checkbox"/> ALL PATCHWORK ACCEPTABLE.	

