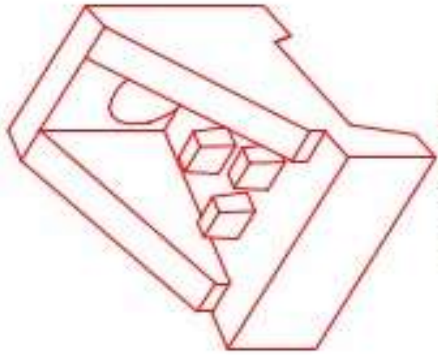


Structure ID: HW 100-1

P1 HWSF24D

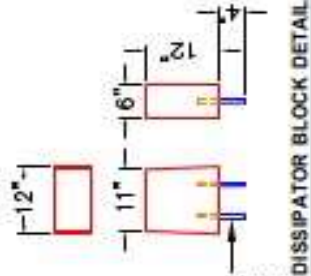
24" - SLOPED & FLARED HEADWALL w/DISS F/F

DIMENSIONS											
PIPE Ø	A	B	C	D	E	F	G	H	I	WEIGHT	DISSIPATORS
24"	3'-8"	4'-4"	2'-10"	1'-6"	5'-0"	4"	3'	2'-10"	6'-0"	5,127 LBS.	3 EA.



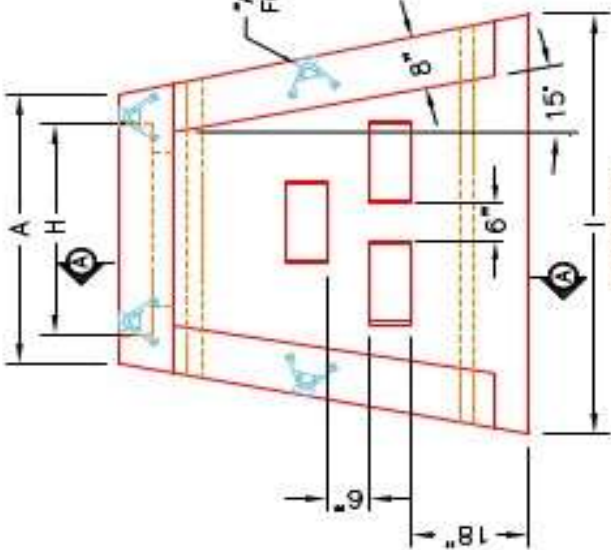
ISOMETRIC VIEW
24" HEADWALL

24"Ø TO 34"Ø STEPPED HOLE FORMER FOR 24"Ø PIPE. 24"Ø TO BE FLUSH WITH FLOOR.



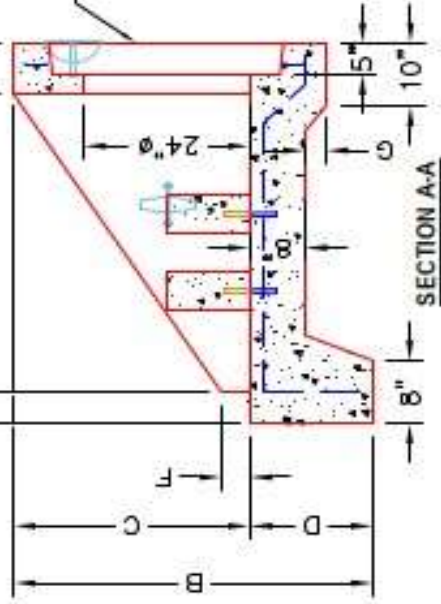
2-#5 BAR STUBS FOR POST MOUNTING TO HEADWALL FLOOR.

"A-ANCHOR" LIFTING SYSTEM FOR PLANT & FIELD HANDLING.



PLAN VIEW

12"x12"x6" ENERGY DISSIPATOR BLOCKS (3 EA.)



FRONT ELEVATION

- NOTES:
1. CONCRETE: 4500 PSI @ 28 DAYS.
 2. REINFORCING: #4 BAR @ 12" C/C E.W.-GRADE 60, (WITH 2" CONCRETE COVER MINIMUM)
 3. REINFORCING BARS TO BE TACK WELDED OR TIED.
 4. DRAWING TO BE USED IN CONJUNCTION WITH KYTC STD. DRAWING RDH-020-03 AND THE STANDARD SPECIFICATIONS FOR ROAD AND BRIDGE CONSTRUCTION.
 5. CHAMFER ON ALL EXPOSED EDGES.

PRODUCTION WORK ORDER	
PRODUCT I.D.: HWSF24D	DESCRIPTION: KYTC 24"Ø SLOPED & FLARED HEADWALL W/DISSIPATORS
PRODUCT VIEW: RIGHT SIDE UP	CUSTOMER: STOCK
PLANT: BEAVER DAM, KY.	PROJECT: STOCK INVENTORY
WEIGHT: 5,127 LBS.	STRUCTURE I.D.: N/A
TOP SECTION JOINT: N/A	QUOTE/SALES ORDER NO: N/A
BASE SECTION JOINT: N/A	CHECK: JH, ROSS, PE DRAWING: N. RICHARDS
QC CHECK INITIALS:	DATE: 09/09/22 SCALE: NTS PG. 1 of 1
QUALITY CONTROL CHECKLIST <input type="checkbox"/> ALL DIMENSIONS CORRECT. <input type="checkbox"/> LIFTERS INSTALLED. <input type="checkbox"/> STEPPED HF CORRECT SIZE. <input type="checkbox"/> REINFORCING CORRECT. <input type="checkbox"/> DISSIPATOR BLOCK INSTALLED. <input type="checkbox"/> EDGES CHAMFERED. <input type="checkbox"/> ALL PATCHWORK ACCEPTABLE.	

