

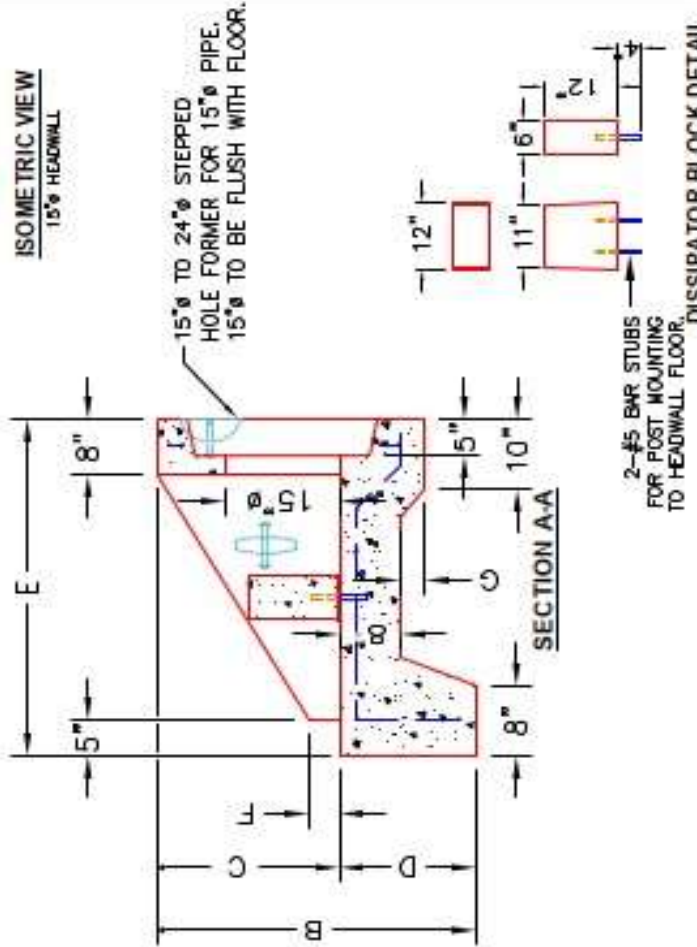
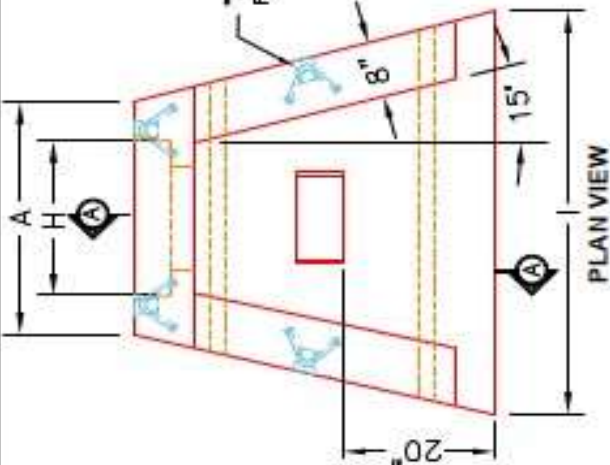
Structure ID: HW 1-1

P1 HWSF15D

15" - SLOPED & FLARED HEADWALL w/DISS F/F

DIMENSIONS											
PIPE #	A	B	C	D	E	F	G	H	I	WEIGHT	DISSIPATORS
15"	2'-9"	3'-6"	2'-0"	1'-6"	4'-0"	3"	2'	2'-0"	4'-9"	3,161 LBS.	1 EA.

"A"-ANCHOR LIFTING SYSTEM FOR PLANT & FIELD HANDLING.



12"x12"x6" ENERGY DISSIPATOR BLOCK (1 EA.).

- NOTES:**
1. CONCRETE: 4500 PSI @ 28 DAYS.
 2. REINFORCING: #4 BAR @ 12" C/C E.W.-GRADE 60, (WITH 2" CONCRETE COVER MINIMUM)
 3. REINFORCING BARS TO BE TACK WELDED OR TIED.
 4. DRAWING TO BE USED IN CONJUNCTION WITH KYTC STD. DRAWING ROH-020-03 AND THE STANDARD SPECIFICATIONS FOR ROAD AND BRIDGE CONSTRUCTION.
 5. CHAMFER ON ALL EXPOSED EDGES.

PRODUCT I.D.:	HWSF15D
PRODUCT VIEW:	RIGHT SIDE UP
PLANT:	BEAVER DAM, KY.
WEIGHT:	3,161 LBS.
TOP SECTION JOINT:	N/A
BASE SECTION JOINT:	N/A
QC CHECK INITIALS:	
DESCRIPTION:	KYTC 15" SLOPED & FLARED HEADWALL W/DISSIPATORS
CUSTOMER:	STOCK
PROJECT:	STOCK INVENTORY
STRUCTURE ID.:	N/A
QUOTE/SALES ORDER NO.:	N/A
CHECK:	J.H. ROSS, PE
DATE:	09/06/22
SCALE:	NTS
PG.	1 of 1

PRODUCTION WORK ORDER

QUALITY CONTROL CHECKLIST

- ALL DIMENSIONS CORRECT.
- LIFTERS INSTALLED.
- STEPPED IF CORRECT SIZE.
- REINFORCING CORRECT.
- DISSIPATOR BLOCK INSTALLED.
- EDGES CHAMFERED.
- ALL PATCHWORK ACCEPTABLE.