

Job Name: 25-3333 Canon Court
 Job Location: Dawson Springs, KY
 Contractor: J & J Excavating

Plant: 100

11/19/2025 6:27:04 PM

Tech: J. Horsley -F

PC: A. Chambers



Structure ID: CB 1

P2 BX036048-06LD08-30x30

CB FLAT TOP 8"W w/30"x30" HOLE F/F

- P3) 30" x 30" - CASTING HEIGHT - 4"
- P2) 36" x 48" - CB FLAT TOP 8"W w/30"x30" HOLE F/F - 6"
- P1) 36" x 48" - BOX BASE 8inW, 8inF, Variable Ht F/n - 36"
- 1) CASTING - HOE 468 F/G
- 1) 36" x 48" - SGL 1"x14.5' Butyl
- 1) Hole - 32
- 1) Hole - 30
- 1) Hole - 24

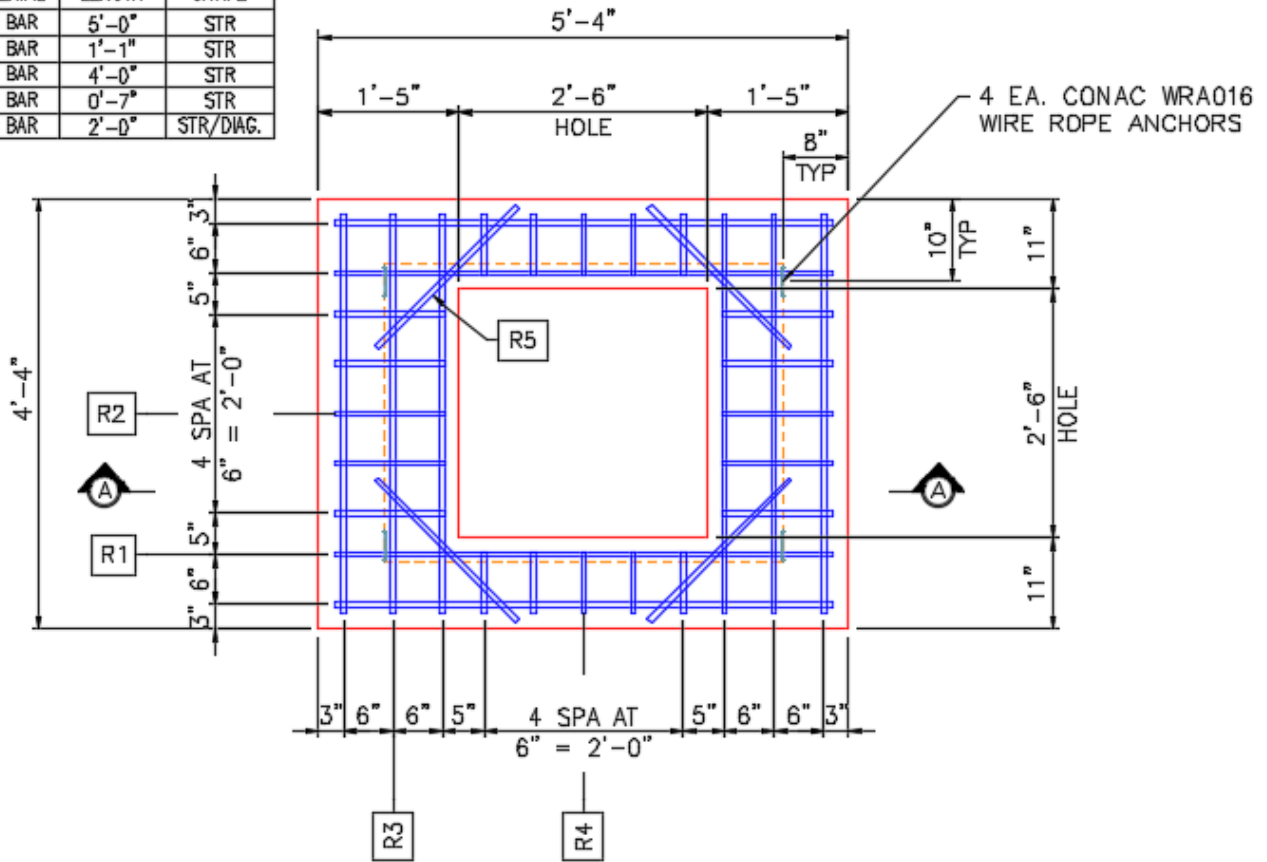
0 lb
 1222 lb
 5645 lb
 489 lb
 0 lb
 0 lb
 0 lb
 0 lb
 0 lb
 Structure Total: 7356 lb

Structure Notes:

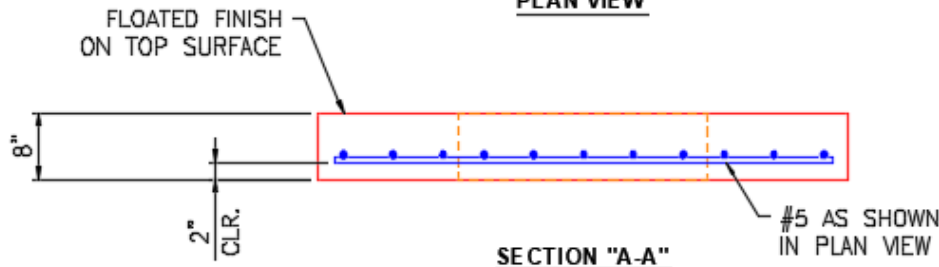
1. PER ASTM C913 SPECIFICATIONS.
2. CONCRETE = 4,000 PSI AT 28 DAYS.
3. REINFORCING PER ASTM A615 (GRADE 60).
4. CASTING BY ICAST (HOE 468 F/G).

- REINFORCING PER ASTM A615 (GRADE 60).
- TOP SLAB = H20 LOADING.
 - WALLS (As .31) #5 BARS AT 12" C.C.E.W.
 - FLOOR (As .31) #5 BARS AT 11" C.C.E.W.

REINFORCEMENT CUT LIST				
BAR	QTY	MATERIAL	LENGTH	SHAPE
R1	4	#5 BAR	5'-0"	STR
R2	10	#5 BAR	1'-1"	STR
R3	6	#5 BAR	4'-0"	STR
R4	10	#5 BAR	0'-7"	STR
R5	4	#5 BAR	2'-0"	STR/DIAG.



PLAN VIEW



SECTION "A-A"

Coating (Int):
 Coating (Ext):

Seam Up: Flat
 Seam Dn: Flat

Wall Thickness: 8"

Height (Ext): 6"

Weight (Net): 1222 lb
 Volume (Net): 0.31cu.yd