

Job Name: 25-3310 - Mammoth Cave NP-MACA 12  
 Job Location: Mammoth Cave , KY  
 Contractor: Phillips Brothers

Plant: 100

Tech: J. Horsley - F

4/2/2026 7:52:10 PM

PC: C. Goff

**Structure ID: CB4**

**P2 BX036036-06LD08-24x36**

**CB FLAT TOP 8"W w/24"x36" HOLE F/F**

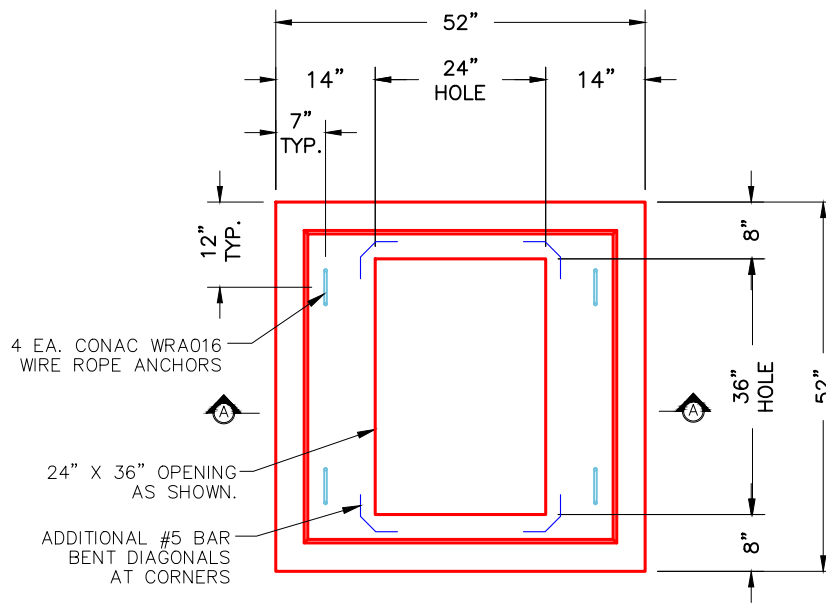
- P3) 24" x 36" - CASTING HEIGHT - 6"
- P2) 36" x 36" - CB FLAT TOP 8"W w/24"x36" HOLE F/F - 6"
- P1) 36" x 36" - BOX BASE 8inW, 8inF, Variable Ht F/n - 34"
- 1) 36" x 36" - Conseal CS-102 1.00"
- 1) 24" x 36" - Conseal CS-102 1.00"
- 2) Hole - 22

0 lb  
 926 lb  
 5216 lb  
 0 lb  
 0 lb  
 0 lb  
 -----  
 Structure Total: 6143 lb

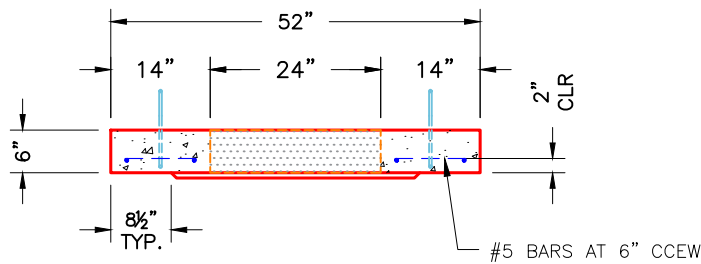
Structure Notes:

1. PER ASTM C913 SPECIFICATIONS.
2. CONCRETE = 4,000 PSI AT 28 DAYS.
3. NO INVERT CHANNEL.
4. CASTING SUPPLIED BY OTHERS (HOE-525).

REINFORCING PER ASTM A615 (GRADE 60).  
 - TOP SLAB (As .12) #5 BARS AT 6" C.C.E.W..  
 - WALLS (As .12) #5 BARS AT 6" C.C.E.W..  
 - FLOOR (As .12) #5 BARS AT 6" C.C.E.W.



**PLAN VIEW**



**SECTION A-A**

NOTES:

1. MANUFACTURED TO ASTM C-913 (LATEST REVISION).
2. CONCRETE: 4,000 PSI AT 28 DAYS.
3. REINFORCING: #5 BAR @ 6" O.C. E.W. (GRADE 60).

Coating (Int):  
 Coating (Ext):

Seam Up: Flat  
 Seam Dn: Flat

Wall Thickness: 8"

Height (Ext): 6"

Weight (Net): 926 lb  
 Volume (Net): 0.24cu.yd