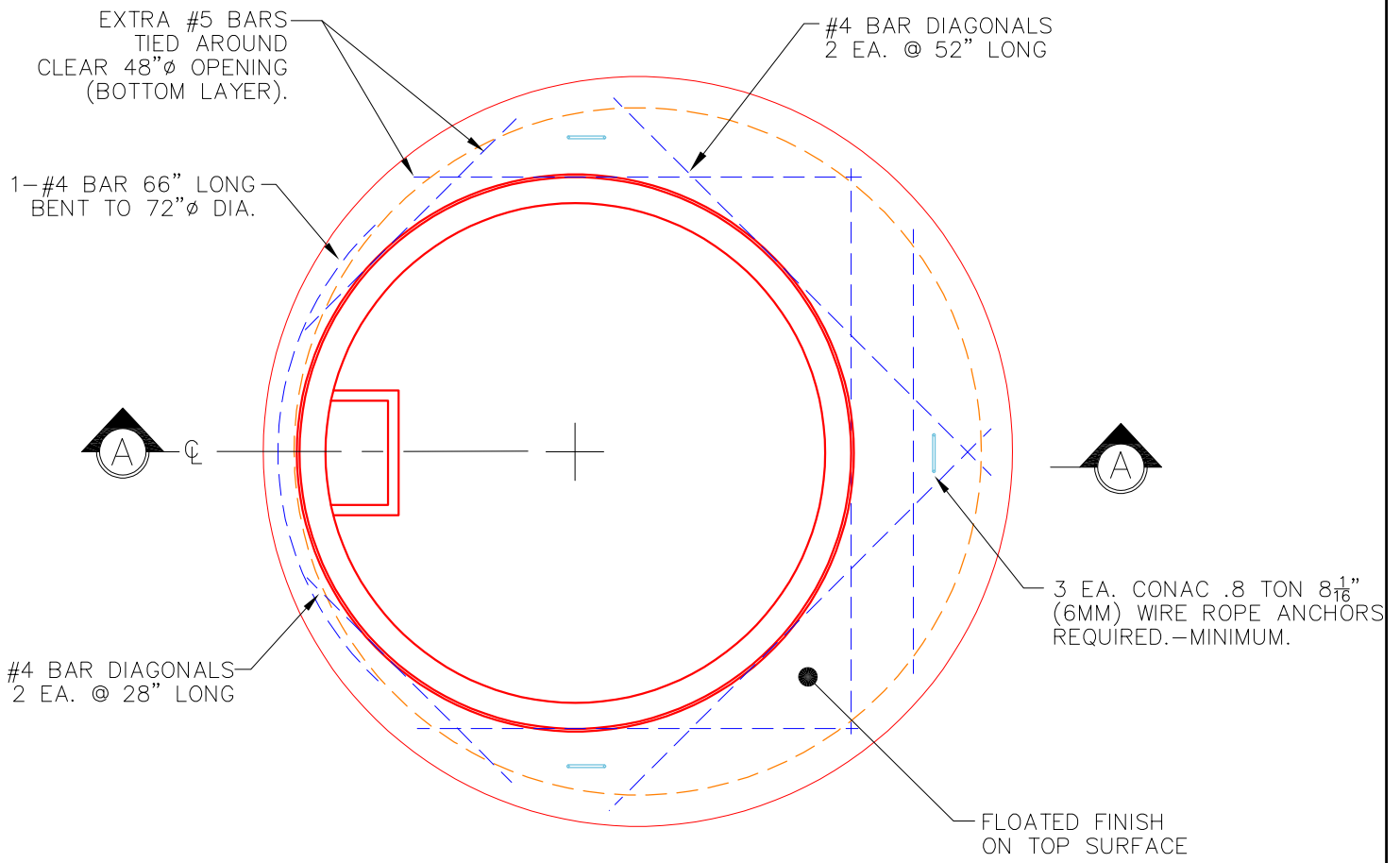
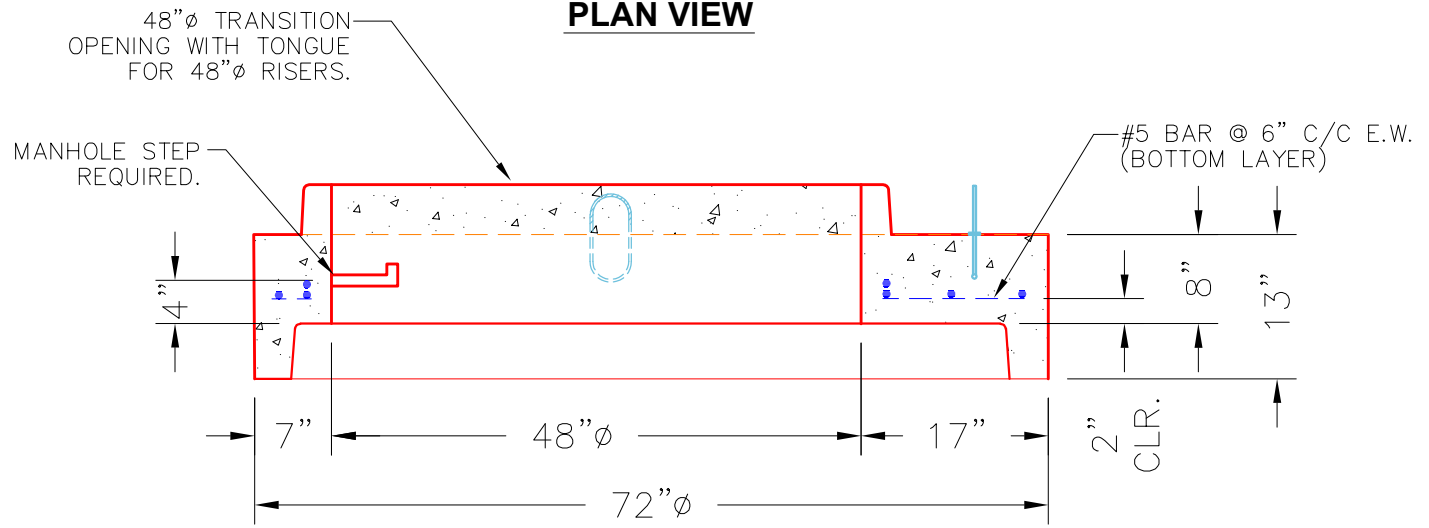


THIS DRAWING IS INTENDED TO BE PRINTED IN COLOR.




PLAN VIEW



SECTION A-A

NOTES:

1. MANUFACTURED TO ASTM C-478 (LATEST REVISION).
2. CONCRETE: 4,500 PSI AT 28 DAYS.
3. REINFORCING: #5 BAR @ 6" C/C E.W. (GRADE 60).

PRODUCTION WORK ORDER		PRODUCT I.D.: MH06048TS13	DESCRIPTION: 60"Ø X 13" TO 48"Ø ECC. TRANSITION SLAB	
	QUALITY CONTROL CHECKLIST		PRODUCT VIEW: RIGHT SIDE UP	
	<input type="checkbox"/> ALL DIMENSIONS CORRECT. <input type="checkbox"/> WIRE LIFT LOOPS INSTALLED. <input type="checkbox"/> HOLE LOCATION CORRECT. <input type="checkbox"/> REINFORCING CORRECT. <input type="checkbox"/> OUTSIDE TOP EDGE TROWELLED. <input type="checkbox"/> FLOATED FINISH ON TOP SURFACE. <input type="checkbox"/> JOINTS INSTALLED.		CUSTOMER: LAGCO INC.	
	PLANT: BEAVER DAM, KY.		PROJECT: LAXMARK SETZER	
	WEIGHT: 2,533 LBS.		STRUCTURE: MH-AA3	
	TOP SECTION JOINT: 48"Ø TONGUE		SALES ORDER NO.: 25-3308	
BASE SECTION JOINT: 60"Ø GROOVE		PE: J. ROSS	DRAWING: J. COPPAGE	
QC CHECK INITIALS:		DATE: 5/2/24	SCALE: NTS	PG. 1 of 1