

**Job Name: 25-3304 - Vuteq Warehouse Expansion**  
**Job Location: Georgetown, KY**  
**Contractor: Brown General Contractors**

PC: Erica Bradley  
 TECH: Jared - A  
 Plant: 100



Structure ID: **ST-8**

Spec: Storm  
 Type: STM.MH Transition  
 Size: 60"

Rim: 921.6'  
 Invert: 906.98'  
 Rim to Invert: 14.62'

Sump: 3.5"  
 Floor (Top): 906.688'  
 Floor Height: 8"

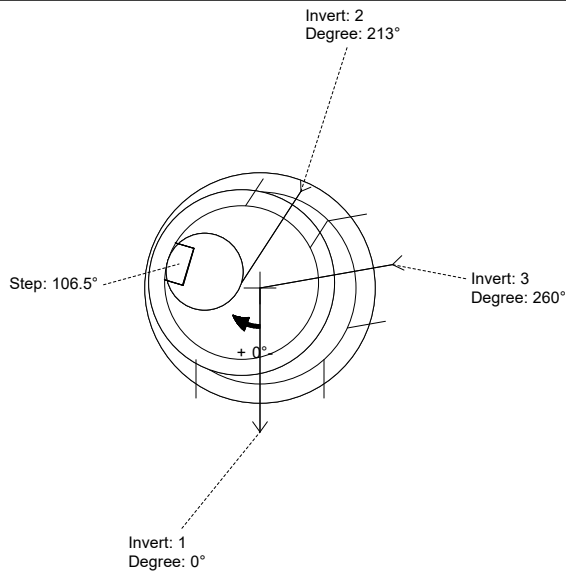
Floor (Bot): 906.022'  
 Overall Height: 15.5'  
 Slack: 0.94"

**Structure Notes:**

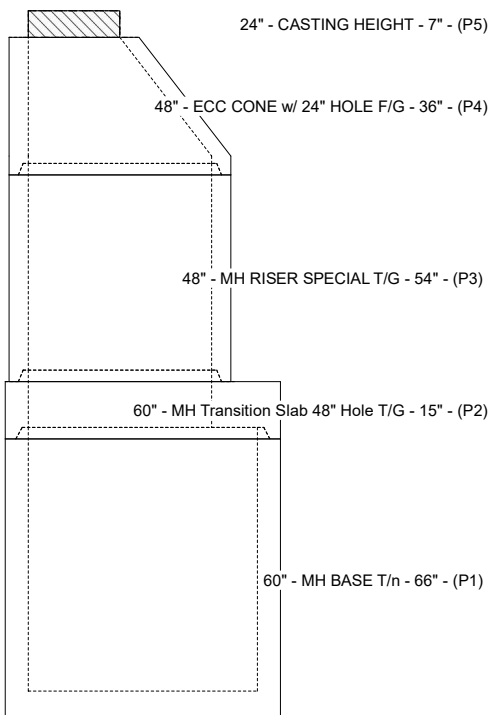
- PER ASTM C-478 SPECIFICATIONS
- CONCRETE: 4,000 PSI AT 28 DAYS
- REINFORCEMENT:  
 - CONE, RISERS, & BASE: PER ASTM A615  
 - TRANSITION SLAB: #5 BAR @ 6" C.C. E.W. (GRADE 60)
- NO STORM INVERT
- STEPS AT 106.5 DEGREES
- HOE MC-315 FRAME & COVER "STORM" SUPPLIED BY ICAST

**STRUCTURE SUMMARY:**

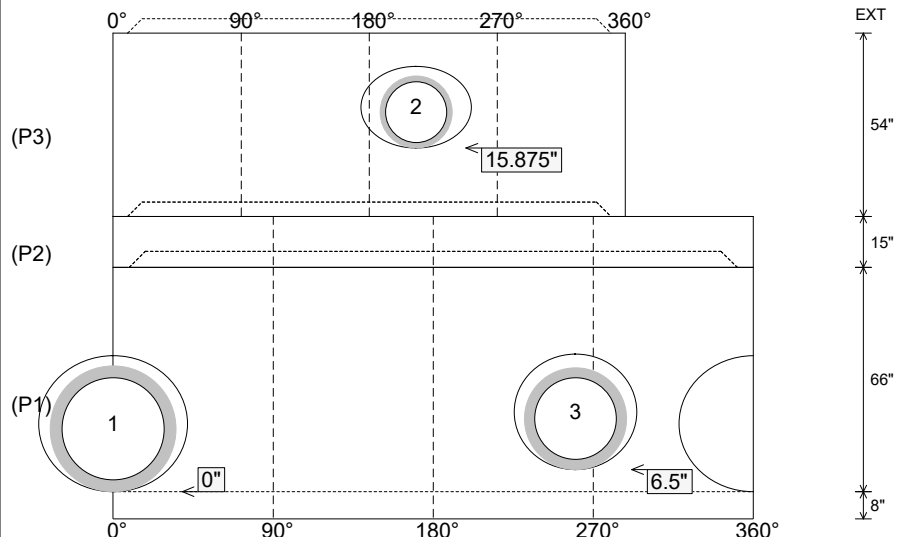
- P5) 24" - CASTING HEIGHT - 7" 0 lb
  - P4) 48" - ECC CONE w/ 24" HOLE F/G - 36" 3000 lb
  - P3) 48" - MH RISER SPECIAL T/G - 54" 3575 lb
  - P2) 60" - MH Transition Slab 48" Hole T/G - 15" 2204 lb
  - P1) 60" - MH BASE T/n - 66" 8460 lb
  - 1) CASTING - HOE MC-315 F/C Storm 258 lb
  - 1) 60" - Conseal CS-102 1.00" 0 lb
  - 2) 48" - Conseal CS-102 1.00" 0 lb
  - 1) Hole - 40 0 lb
  - 1) Hole - 24 0 lb
  - 1) Hole - 34 0 lb
  - 13) MH Step ML-10-TDS-NCR - 10" 0 lb
- Structure Total: 17498 lb



Position	Elev	Angle	Pipe	Pipe OD	Hole	Connector	Up (')	Ref
Rim	921.6'							
Reducer	912.188'							
Invert 1	906.98'	0°	30" RCP B WALL	37"	40"	Hole 40	0"	P1
Invert 2	915.25'	213°	18" HDPE	21.2"	24"	Hole 24	15.875"	P3
Invert 3	907.48'	260°	24" RCP B WALL	30"	34"	Hole 34	6.5"	P1
Invert 4								
Invert 5								
Invert 6								
Invert 7								
Invert 8								



**Cast (Int. Dim.) - Interior Dimensions**



Submittal Drawing  
 3/19/2026 10:46:24 AM

SUBMITTAL  
 APPROVED BY: