

**Structure ID: ST-8**

**P3 MH048RS54S**

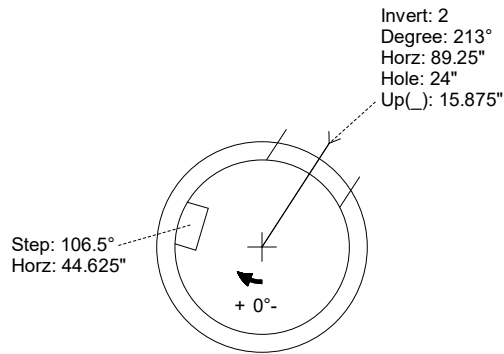
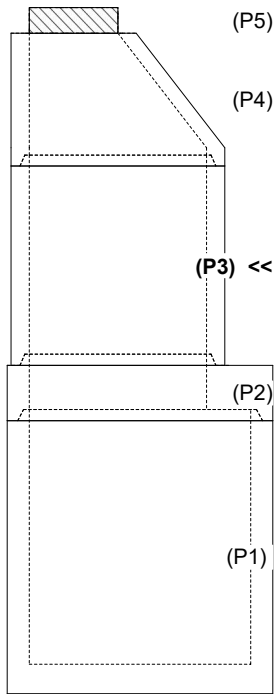
**MH RISER SPECIAL T/G**

|   |  |   |
|---|--|---|
| P5) 24" - CASTING HEIGHT - 7"<br>P4) 48" - ECC CONE w/ 24" HOLE F/G - 36"<br>P3) 48" - MH RISER SPECIAL T/G - 54"<br>P2) 60" - MH Transition Slab 48" Hole T/G - 15"<br>P1) 60" - MH BASE T/n - 66"<br>1) CASTING - HOE MC-315 F/C Storm<br>1) 60" - Conseal CS-102 1.00"<br>2) 48" - Conseal CS-102 1.00"<br>1) Hole - 40<br>1) Hole - 24<br>1) Hole - 34<br>13) MH Step ML-10-TDS-NCR - 10" | 0 lb<br>3000 lb<br>3575 lb<br>2204 lb<br>8460 lb<br>258 lb<br>0 lb<br>0 lb<br>0 lb<br>0 lb<br>0 lb<br>0 lb<br>0 lb<br>0 lb<br>-----<br>Structure Total: 17498 lb | <b>Structure Notes:</b><br>1. PER ASTM C-478 SPECIFICATIONS<br>2. CONCRETE: 4,000 PSI AT 28 DAYS<br>3. REINFORCEMENT: PER ASTM A615<br>4. STEPS AT 106.5 DEGREES<br>5. HOE MC-315 FRAME & COVER "STORM" SUPPLIED BY ICAST |
|---|--|---|

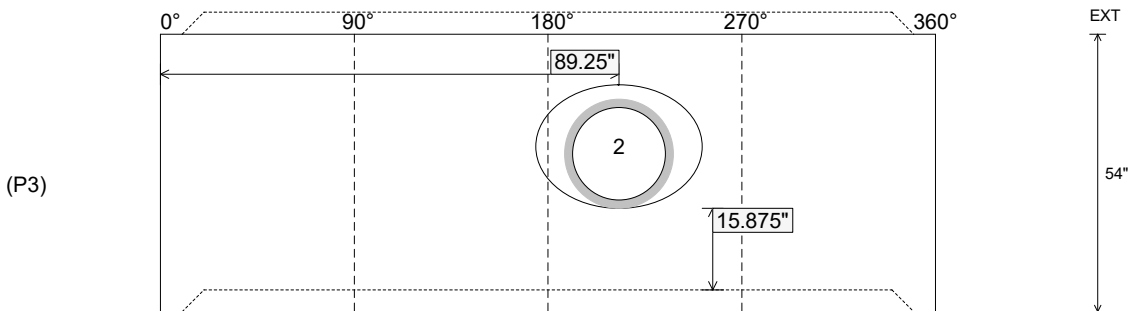
Rim: 921.6'    Rim to Invert: 14.62'    Slack: 0.94"    Sump: 3.5"    Step Position: 106.5°

| Position | Elev    | Angle | Ext. (cw) | Pipe     | Pipe OD | Connector | Hole | Horz Size | Up ( )  | Offset |
|----------|---------|-------|-----------|----------|---------|-----------|------|-----------|---------|--------|
| Invert 1 |         |       |           |          |         |           |      |           |         |        |
| Invert 2 | 915.25' | 213°  | 107.75"   | 18" HDPE | 21.2"   | Hole 24   | 24"  | 25.133"   | 15.875" | 0"     |
| Invert 3 |         |       |           |          |         |           |      |           |         |        |
| Invert 4 |         |       |           |          |         |           |      |           |         |        |
| Invert 5 |         |       |           |          |         |           |      |           |         |        |
| Invert 6 |         |       |           |          |         |           |      |           |         |        |
| Invert 7 |         |       |           |          |         |           |      |           |         |        |
| Invert 8 |         |       |           |          |         |           |      |           |         |        |

**RIGHT-SIDE UP VIEW (int. dimensions)**



**INSIDE WALL DIMENSIONS**



|                                  |                                    |  |  |  |
|----------------------------------|------------------------------------|--|--|--|
| Coating (Int):<br>Coating (Ext): | Seam Up: Tongue<br>Seam Dn: Groove | Wall Thickness: 5"<br>Floor Height: 0" | Height (Int): 54"<br>Height (Ext): 54" | Weight (Net): 3575 lb<br>Volume (Net): 0.91cu.yd |
|----------------------------------|------------------------------------|--|--|--|