

Job Name: 25-3304 - Vuteq Warehouse Expansion  
 Job Location: Georgetown, KY  
 Contractor: Brown General Contractors

Plant: 100

3/19/2026 11:42:57 AM

Tech: Jared - A

PC: Erica Bradley



**Structure ID: ST-6**

**P3 MH060TS15-48ECC**

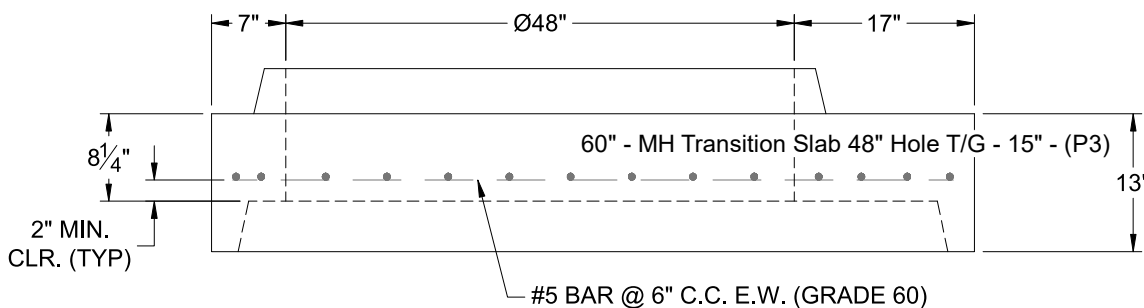
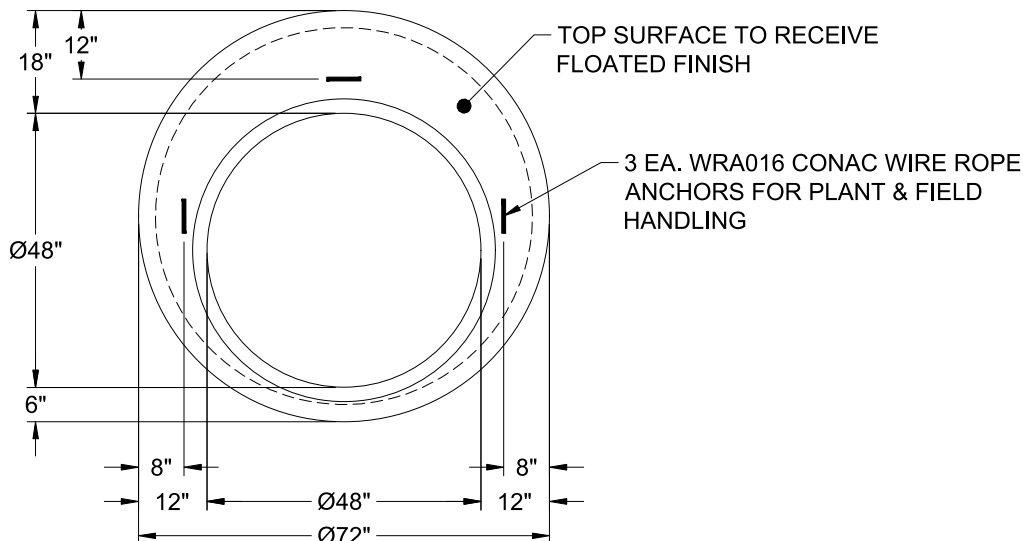
**MH Transition Slab 48" Hole T/G**

- P6) 24" - CASTING HEIGHT - 7"
- P5) 48" - ECC CONE w/ 24" HOLE F/G - 36"
- P4) 48" - MH RISER T/G - 60"
- P3) 60" - MH Transition Slab 48" Hole T/G - 15"
- P2) 60" - MH RISER SPECIAL T/G - 72"
- P1) 60" - MH BASE T/n - 60"
- 1) CASTING - HOE MC-315 F/C Storm
- 2) 60" - Conseal CS-102 1.00"
- 2) 48" - Conseal CS-102 1.00"
- 2) Hole - 40
- 19) MH Step ML-10-TDS-NCR - 10"

- 0 lb
- 3000 lb
- 4192 lb
- 2204 lb
- 6835 lb
- 8315 lb
- 258 lb
- 0 lb
- 0 lb
- 0 lb
- 0 lb
- \_\_\_\_\_ lb

Structure Total: 24803 lb

- Structure Notes:
1. PER ASTM C-478 SPECIFICATIONS
  2. CONCRETE: 4,000 PSI AT 28 DAYS
  3. REINFORCEMENT: #5 BAR @ 6" C.C. E.W. (GRADE 60) - 2" MIN. REBAR CLEARANCE (TYP)
  4. HOE MC-315 FRAME & COVER "STORM" SUPPLIED BY ICAST
  5. LIFTERS: 3 EA. WRA016 CONAC WIRE ROPE ANCHORS FOR PLANT & FIELD HANDLING
  6. TOP SURFACE TO RECEIVE FLOATED FINISH



Coating (Int): Coating (Ext):	Seam Up: Tongue Seam Dn: Groove	Wall Thickness: 6"	Height (Ext): 15"	Weight (Net): 2204 lb Volume (Net): 0.56cu.yd
----------------------------------	------------------------------------	--------------------	-------------------	--