

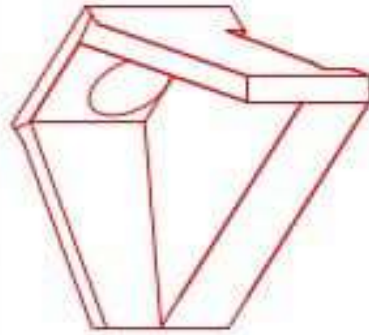


**Structure ID: ST-5**

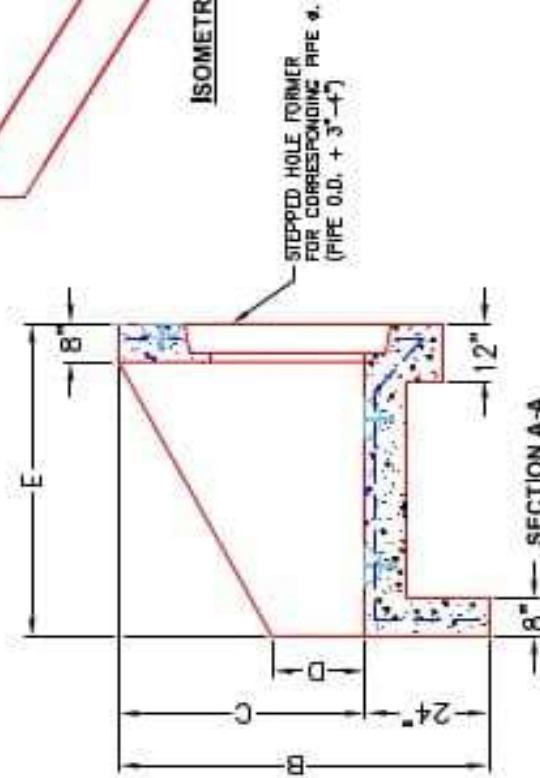
**P1 HWPC30**

**30" - PIPE CULVERT HEADWALL F/F**

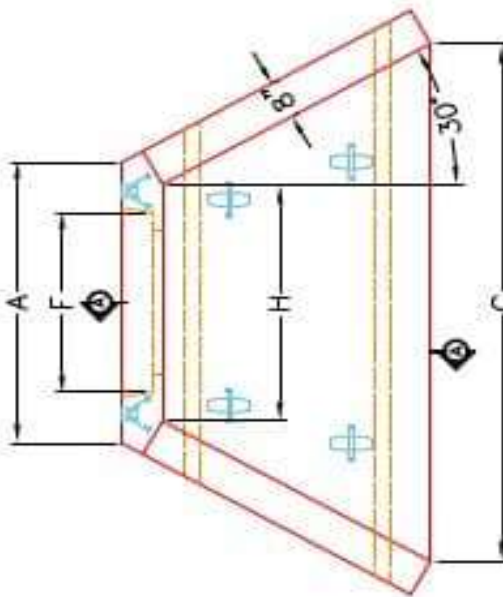
PIPE #	A	B	C	D	E	F	G	H	WEIGHT
30"	1'-4"	6'-4"	1'-4"	1'-4"	5'-0"	1'-6"	1'-8"	3'-4"	1400 lbs.
36"	1'-4"	6'-4"	1'-4"	1'-4"	5'-0"	1'-6"	1'-8"	3'-4"	1400 lbs.
42"	6'-4"	6'-4"	5'-4"	2'-4"	6'-4"	6'-4"	11'-8"	11'-8"	1420 lbs.
48"	6'-4"	6'-4"	5'-4"	2'-4"	6'-4"	6'-4"	11'-8"	11'-8"	1420 lbs.
54"	7'-4"	7'-4"	6'-4"	2'-4"	7'-4"	7'-4"	12'-8"	12'-8"	1442 lbs.
60"	7'-4"	7'-4"	6'-4"	2'-4"	7'-4"	7'-4"	12'-8"	12'-8"	1442 lbs.



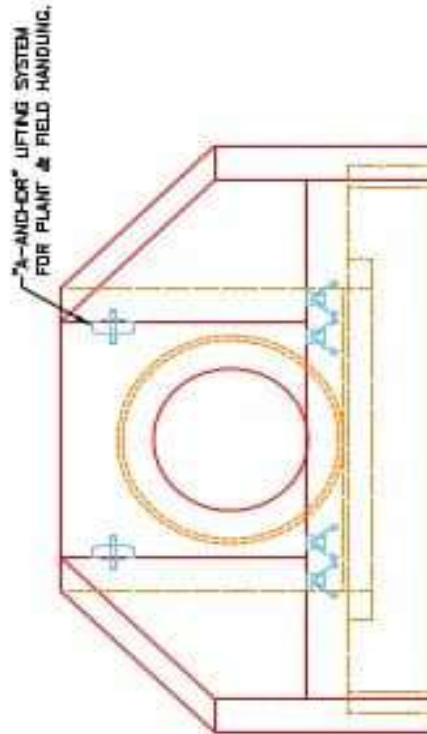
**ISOMETRIC VIEW**



**SECTION A-A**



**PLAN VIEW**



**FRONT ELEVATION**

**NOTES:**

1. CONCRETE: KYTC APPROVED.
2. REINFORCING: #5 BAR @ 12" C/C E.W.-GRADE 60, (WITH 2" CONCRETE COVER MINIMUM)
3. REINFORCING BARS TO BE TACK WELDED OR TIED.
4. PIPE AND LIFTING ANCHOR POCKETS TO BE GROUTED WITH KYTC APPROVED NON-SHRINK GROUT.
5. DRAWING TO BE USED IN CONJUNCTION WITH KYTC STD. DRAWING RDH-110-02, RDH-210-03 AND THE STANDARD SPECIFICATIONS FOR ROAD AND BRIDGE CONSTRUCTION.
6. 3" CHAMFER ON ALL EXPOSED EDGES.
7. PREFORMED STEPPED HOLE SIZED AS PER O.D. OF PIPE + 3"-4".

APPROVED FOR DESIGN ONLY

**APPROVED**  
 AS PER SPECIFICATION 1012  
 KYTC DIV. OF CONSTRUCTION

DATE: 1/20/2021 9:50 AM  
 INSTRUCTION

**ICAST**  
 INFRASTRUCTURE PRECAST, INC.  
 801 WEST 7TH ST., SUITE 200, KY.  
 PHONE: 502-238-2288, FAX: 502-238-2888

KYTC 30"-60" PIPE CULVERT HEADWALL

DRAWING NO.: KYTC PC-118 DATE: 12-14-20  
 DESIGNED BY: J.H. DAVIS, PE DRAWN BY: N. RUSSELL  
 WEB: WWW.ICAST.COM SCALE: 4/8