

Job Name: 25-3304 - Vuteq Warehouse Expansion
 Job Location: Georgetown, KY
 Contractor: Brown General Contractors

Plant: 100

3/19/2026 11:40:27 AM

Tech: Jared - A

PC: Erica Bradley



Structure ID: ST-4

P1 BX4848-08BAVF-EB

BX BASE w/FLANGE 08W/08F/12EF F/n

- P2) 48" x 48" - CASTING HEIGHT - 0"
- P1) 48" x 48" - BX BASE w/FLANGE 08W/08F/12EF F/n - 62"
- 1) SECONDARY POUR
- 1) CASTING - TRASHRACKS LFG-4848-P Flat Inlet Grate
- 1) 48" x 48" - Conseal CS-102 1.00"
- 1) Hole - 26
- 2) Orifice - 6"
- 1) Weir n/n - 12"x6"

0 lb
 14079 lb
 0 lb
 83 lb
 0 lb
 0 lb
 0 lb
 0 lb

 Structure Total: 14162 lb

- Structure Notes:
1. PER ASTM C-913 SPECIFICATIONS
 2. CONCRETE: 4,500 PSI AT 28 DAYS
 3. REINFORCEMENT: #5 BAR @ 12" C.C. E.W. (GRADE 60) - 2" MIN. REBAR CLEARANCE (TYP)
 4. NO STORM INVERT
 5. NO STEPS
 6. TRASHRACKS LFG-4848-P SQUARE FLAT INLET GRATE SUPPLIED BY ICAST
 7. WET STICK 20" X 36" #5 L-BARS SPACED @ 12" C.C. (GRADE 60) OUT OF FLOOR FOR WALL POUR TIE-IN (SEE L-BAR DETAIL)

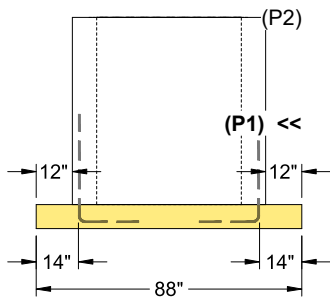
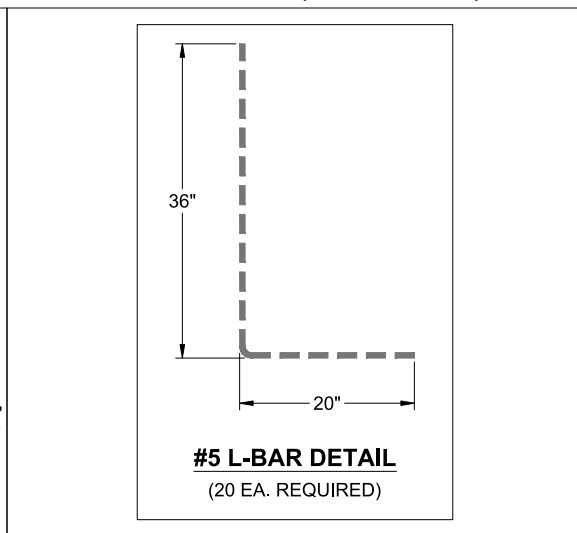
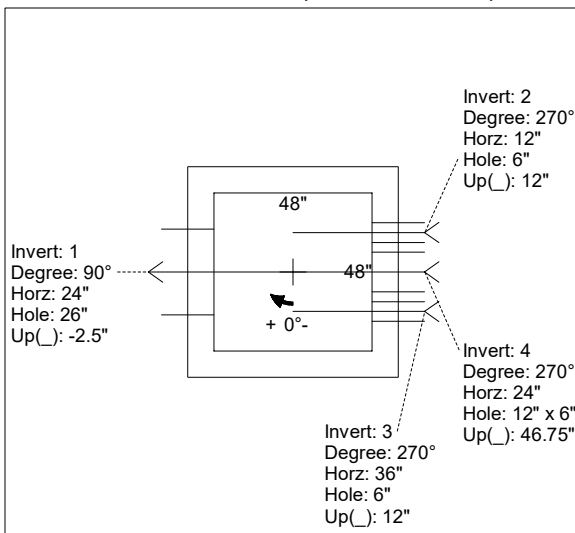
FIRST POUR (FLOOR): 5,199 LBS
SECOND POUR (WALLS): 8,880 LBS

Rim: 898' Rim to Invert: 5.2' Slack: 0.4" Sump: 0" Step Position:

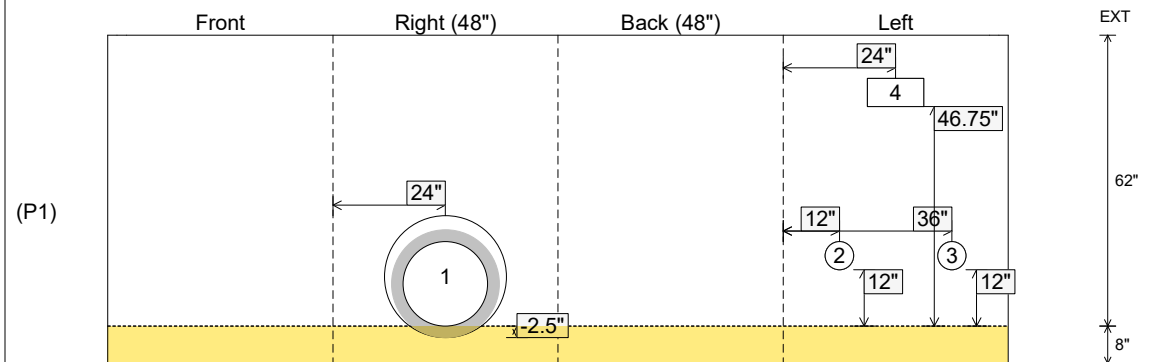
Position	Elev	Angle	Ext. (cw)	Pipe	Pipe OD	Connector	Hole	Horz Size	Up ()	Offset
Invert 1	892.8'	90°	32"	18" RCP B WALL	23"	Hole 26	26"	26"	-2.5"	0"
Invert 2	893.8'	270°	20"	6" Orifice	6"	Orifice 6"	6"	6"	12"	-12"
Invert 3	893.8'	270°	44"	6" Orifice	6"	Orifice 6"	6"	6"	12"	12"
Invert 4	896.7'	270°	32"	12" x 6" Weir	12" x 6"	Weir 12"x6"	12" x 6"	12"	46.75"	0"
Invert 5										
Invert 6										
Invert 7										
Invert 8										

RIGHT-SIDE UP VIEW (int. dimensions)

UPSIDE-DOWN VIEW (int. dimensions)



INSIDE WALL DIMENSIONS



Coating (Int):
 Coating (Ext):

Seam Up: Flat
 Seam Dn: n/a

Wall Thickness: 8"
 Floor Height: 8"

Height (Int): 62"
 Height (Ext): 70"

Weight (Net): 14079 lb
 Volume (Net): 3.6cu.yd

Job Name: 25-3304 - Vuteq Warehouse Expansion
 Job Location: Georgetown, KY
 Contractor: Brown General Contractors

Plant: 100
 3/19/2026 11:40:27 AM

Tech: Jared - A
 PC: Erica Bradley



Structure ID: ST-4

P1 BX4848-08BAVF-EB

BX BASE w/FLANGE 08W/08F/12EF F/n

- P2) 48" x 48" - CASTING HEIGHT - 0"
- P1) 48" x 48" - BX BASE w/FLANGE 08W/08F/12EF F/n - 62"
- 1) SECONDARY POUR
- 1) CASTING - TRASHRACKS LFG-4848-P Flat Inlet Grate
- 1) 48" x 48" - Conseal CS-102 1.00"
- 1) Hole - 26
- 2) Orifice - 6"
- 1) Weir n/n - 12"x6"

0 lb
 14079 lb
 0 lb
 83 lb
 0 lb
 0 lb
 0 lb
 0 lb

 Structure Total: 14162 lb

- Structure Notes:
1. PER ASTM C-913 SPECIFICATIONS
 2. CONCRETE: 4,500 PSI AT 28 DAYS
 3. REINFORCEMENT: #5 BAR @ 12" C.C. E.W. (GRADE 60) - 2" MIN. REBAR CLEARANCE (TYP)
 4. NO STORM INVERT
 5. NO STEPS
 6. TRASHRACKS LFG-4848-P SQUARE FLAT INLET GRATE SUPPLIED BY ICAST
 7. INVERTS 2 & 3 OFFSET 12" FROM CENTER (24" CENTER-TO-CENTER)
 8. LIFTERS: 4 EA. 5CA14 CONAC A-ANCHORS FOR PLANT & FIELD HANDLING - INSTALLED IN 0° & 180° WALLS, MIN. 16" FROM TOP OF WALLS

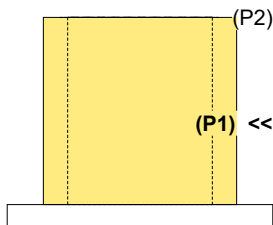
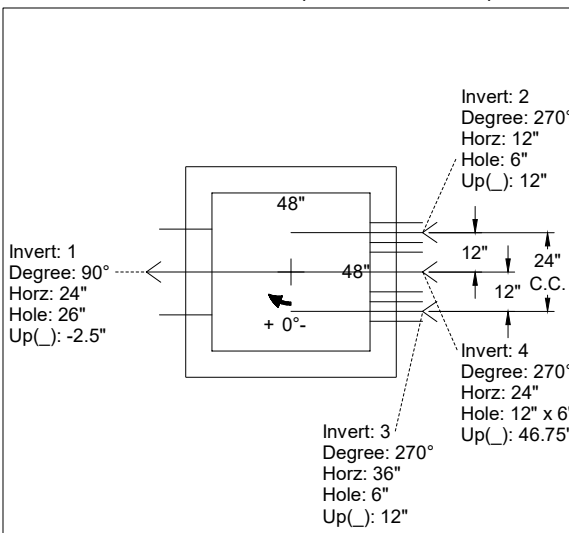
FIRST POUR (FLOOR): 5,199 LBS
SECOND POUR (WALLS): 8,880 LBS

Rim: 898' Rim to Invert: 5.2' Slack: 0.4" Sump: 0" Step Position:

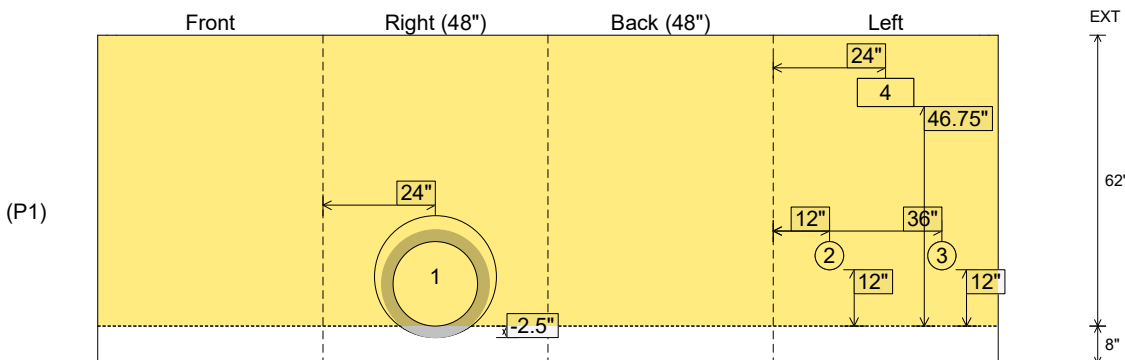
Position	Elev	Angle	Ext. (cw)	Pipe	Pipe OD	Connector	Hole	Horz Size	Up ()	Offset
Invert 1	892.8'	90°	32"	18" RCP B WALL	23"	Hole 26	26"	26"	-2.5"	0"
Invert 2	893.8'	270°	20"	6" Orifice	6"	Orifice 6"	6"	6"	12"	-12"
Invert 3	893.8'	270°	44"	6" Orifice	6"	Orifice 6"	6"	6"	12"	12"
Invert 4	896.7'	270°	32"	12" x 6" Weir	12" x 6"	Weir 12"x6"	12" x 6"	12"	46.75"	0"
Invert 5										
Invert 6										
Invert 7										
Invert 8										

RIGHT-SIDE UP VIEW (int. dimensions)

UPSIDE-DOWN VIEW (int. dimensions)



INSIDE WALL DIMENSIONS



Coating (Int):
 Coating (Ext):

Seam Up: Flat
 Seam Dn: n/a

Wall Thickness: 8"
 Floor Height: 8"

Height (Int): 62"
 Height (Ext): 70"

Weight (Net): 14079 lb
 Volume (Net): 3.6cu.yd