

Job Name: 25-3304 - Vuteq Warehouse Expansion  
 Job Location: Georgetown, KY  
 Contractor: Brown General Contractors

Plant: 100

3/19/2026 11:40:25 AM

Tech: Jared - A

PC: Erica Bradley



**Structure ID: ST-3**

**P1 BX4848-08BAVF-EB**

**BX BASE w/FLANGE 08W/08F/12EF F/n**

- P2) 48" x 48" - CASTING HEIGHT - 0"
- P1) 48" x 48" - BX BASE w/FLANGE 08W/08F/12EF F/n - 62"
- 1) SECONDARY POUR
- 1) CASTING - TRASHRACKS LFG-4848-P Flat Inlet Grate
- 1) 48" x 48" - Conseal CS-102 1.00"
- 1) Hole - 26
- 1) Orifice - 4"
- 1) Weir n/n - 12"x6"

0 lb  
 14108 lb  
 0 lb  
 83 lb  
 0 lb  
 0 lb  
 0 lb  
 0 lb  
 -----  
 14191 lb

Structure Total:

Structure Notes:

1. PER ASTM C-913 SPECIFICATIONS
2. CONCRETE: 4,500 PSI AT 28 DAYS
3. REINFORCEMENT: #5 BAR @ 12" C.C. E.W. (GRADE 60) - 2" MIN. REBAR CLEARANCE (TYP)
4. NO STORM INVERT
5. NO STEPS
6. TRASHRACKS LFG-4848-P SQUARE FLAT INLET GRATE SUPPLIED BY ICAST
7. WET STICK 20" X 36" #5 L-BARS SPACED @ 12" C.C. (GRADE 60) OUT OF FLOOR FOR WALL POUR TIE-IN (SEE L-BAR DETAIL)

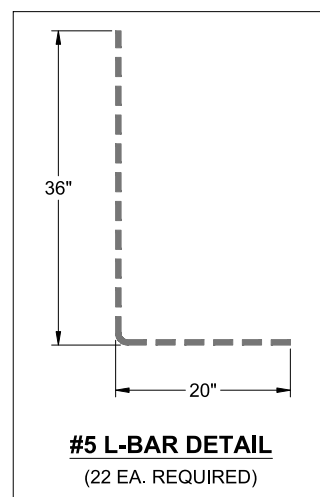
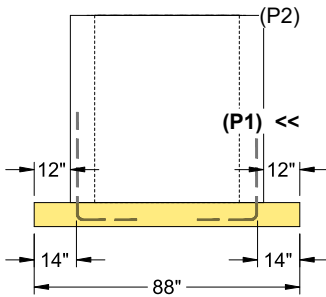
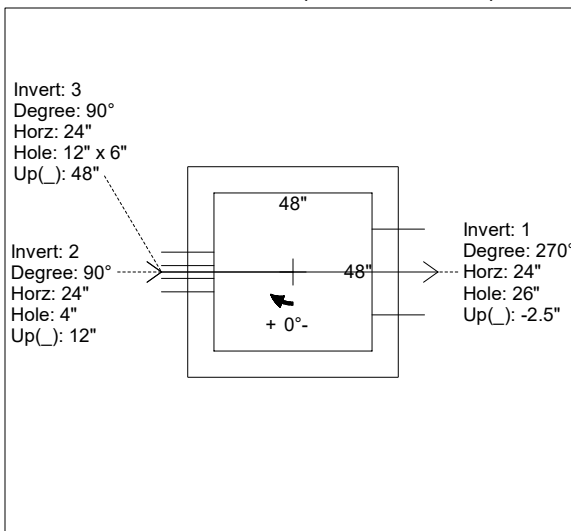
**FIRST POUR (FLOOR): 5,199 LBS**  
**SECOND POUR (WALLS): 8,909 LBS**

Rim: 901' Rim to Invert: 5.2' Slack: 0.4" Sump: 0" Step Position:

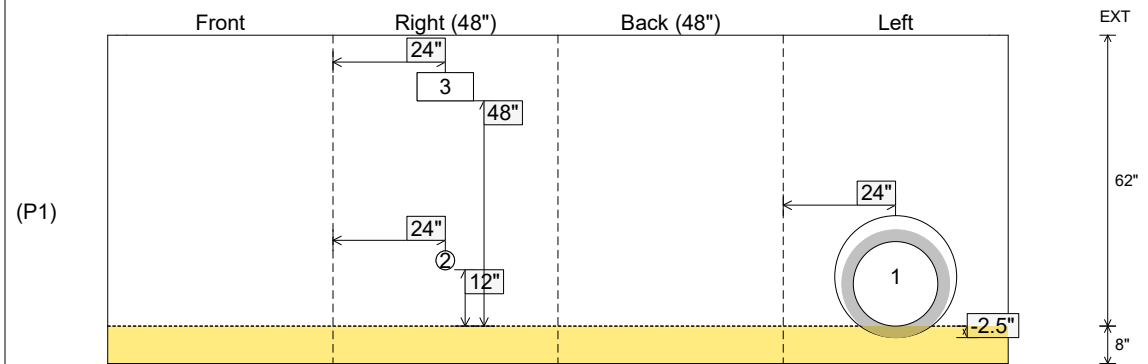
Position	Elev	Angle	Ext. (cw)	Pipe	Pipe OD	Connector	Hole	Horz Size	Up ( )	Offset
Invert 1	895.8'	270°	32"	18" RCP B WALL	23"	Hole 26	26"	26"	-2.5"	0"
Invert 2	896.8'	90°	32"	4" Orifice	4"	Orifice 4"	4"	4"	12"	0"
Invert 3	899.8'	90°	32"	12" x 6" Weir	12" x 6"	Weir 12"x6"	12" x 6"	12"	48"	0"
Invert 4										
Invert 5										
Invert 6										
Invert 7										
Invert 8										

RIGHT-SIDE UP VIEW (int. dimensions)

UPSIDE-DOWN VIEW (int. dimensions)



INSIDE WALL DIMENSIONS



Coating (Int):  
 Coating (Ext):

Seam Up: Flat  
 Seam Dn: n/a

Wall Thickness: 8"  
 Floor Height: 8"

Height (Int): 62"  
 Height (Ext): 70"

Weight (Net): 14108 lb  
 Volume (Net): 3.6cu.yd

**Structure ID: ST-3**

**P1 BX4848-08BAVF-EB**

**BX BASE w/FLANGE 08W/08F/12EF F/n**

- |                                                                                                                                                                                                                                                                              |                                                                                                         |
|------------------------------------------------------------------------------------------------------------------------------------------------------------------------------------------------------------------------------------------------------------------------------|---------------------------------------------------------------------------------------------------------|
| P2) 48" x 48" - CASTING HEIGHT - 0"<br>P1) 48" x 48" - BX BASE w/FLANGE 08W/08F/12EF F/n - 62"<br>1) SECONDARY POUR<br>1) CASTING - TRASHRACKS LFG-4848-P Flat Inlet Grate<br>1) 48" x 48" - Conseal CS-102 1.00"<br>1) Hole - 26<br>1) Orifice - 4"<br>1) Weir n/n - 12"x6" | 0 lb<br>14108 lb<br>0 lb<br>83 lb<br>0 lb<br>0 lb<br>0 lb<br>0 lb<br>-----<br>Structure Total: 14191 lb |
|------------------------------------------------------------------------------------------------------------------------------------------------------------------------------------------------------------------------------------------------------------------------------|---------------------------------------------------------------------------------------------------------|

- Structure Notes:
1. PER ASTM C-913 SPECIFICATIONS
  2. CONCRETE: 4,500 PSI AT 28 DAYS
  3. REINFORCEMENT: #5 BAR @ 12" C.C. E.W. (GRADE 60) - 2" MIN. REBAR CLEARANCE (TYP)
  4. NO STORM INVERT
  5. NO STEPS
  6. TRASHRACKS LFG-4848-P SQUARE FLAT INLET GRATE SUPPLIED BY ICAST
  7. LIFTERS: 4 EA. 5CA14 CONAC A-ANCHORS FOR PLANT & FIELD HANDLING - INSTALLED IN 0° & 180° WALLS, MIN. 16" FROM TOP OF WALLS

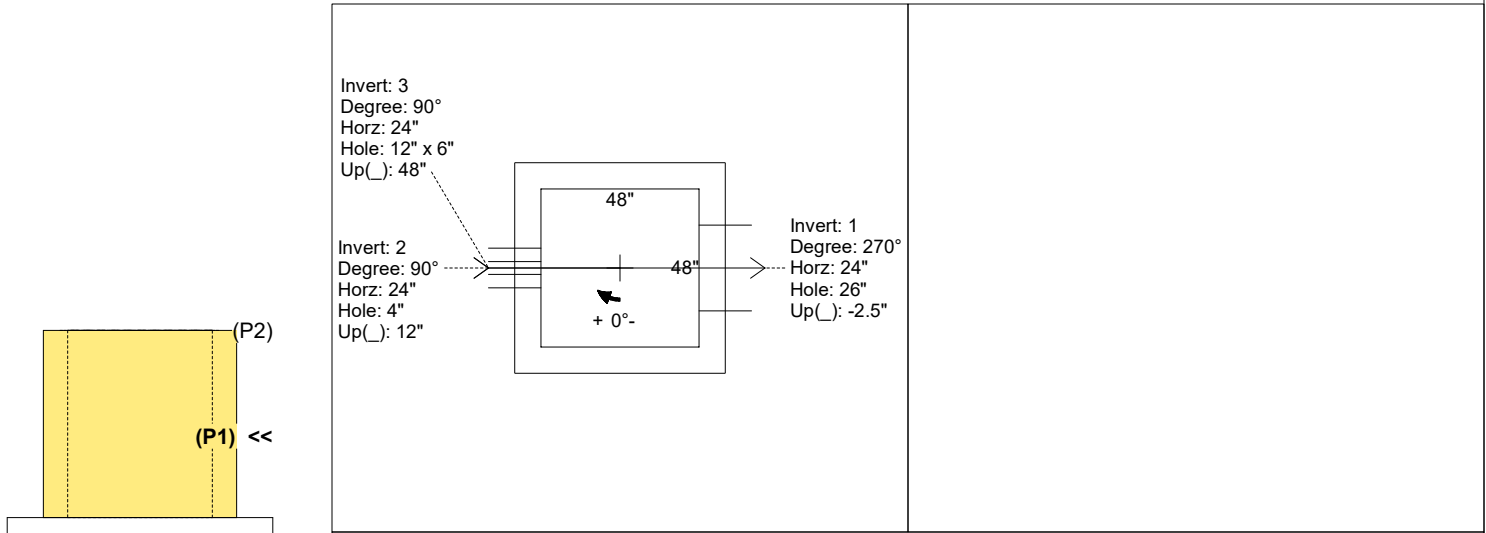
**FIRST POUR (FLOOR): 5,199 LBS**  
**SECOND POUR (WALLS): 8,909 LBS**

Rim: 901'    Rim to Invert: 5.2'    Slack: 0.4"    Sump: 0"    Step Position:

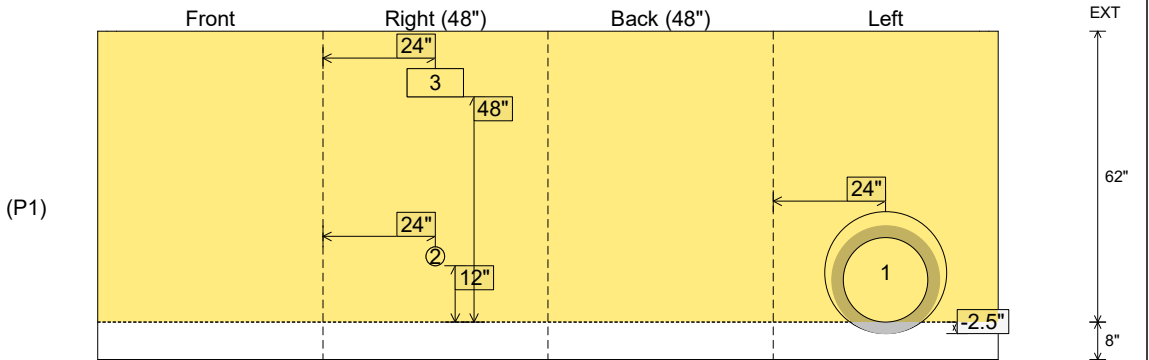
Position	Elev	Angle	Ext. (cw)	Pipe	Pipe OD	Connector	Hole	Horz Size	Up ( )	Offset
Invert 1	895.8'	270°	32"	18" RCP B WALL	23"	Hole 26	26"	26"	-2.5"	0"
Invert 2	896.8'	90°	32"	4" Orifice	4"	Orifice 4"	4"	4"	12"	0"
Invert 3	899.8'	90°	32"	12" x 6" Weir	12" x 6"	Weir 12"x6"	12" x 6"	12"	48"	0"
Invert 4										
Invert 5										
Invert 6										
Invert 7										
Invert 8										

RIGHT-SIDE UP VIEW (int. dimensions)

UPSIDE-DOWN VIEW (int. dimenions)



INSIDE WALL DIMENSIONS



Coating (Int): Coating (Ext):	Seam Up: Flat Seam Dn: n/a	Wall Thickness: 8" Floor Height: 8"	Height (Int): 62" Height (Ext): 70"	Weight (Net): 14108 lb Volume (Net): 3.6cu.yd
----------------------------------	-------------------------------	----------------------------------------	----------------------------------------	--------------------------------------------------