

**Structure ID: ST-20**

**P1 MH048BAVF**

**MH BASE Custom Ht F/n**

P3) 24" x 24" - CASTING HEIGHT - 5" P2) 48" - MH FLAT TOP w/24"x24" Hole F/F - 7" P1) 48" - MH BASE Custom Ht F/n - 27" 1) CASTING - HOE KY-465 SET (CBI TY F) 1) 48" - Conseal CS-102 1.00" 1) 24" x 24" - Conseal CS-102 1.00" 2) Hole - 20"	0 lb 1214 lb 2925 lb 465 lb 0 lb 0 lb 0 lb ----- 4603 lb	<b>Structure Notes:</b> 1. PER ASTM C-478 SPECIFICATIONS 2. CONCRETE: 4,000 PSI AT 28 DAYS 3. REINFORCEMENT: PER ASTM A615 4. NO STORM INVERT 5. NO STEPS 6. HOE KY-465 FRAME, GRATE, & CURB HOOD SUPPLIED BY ICAST
--	--	---

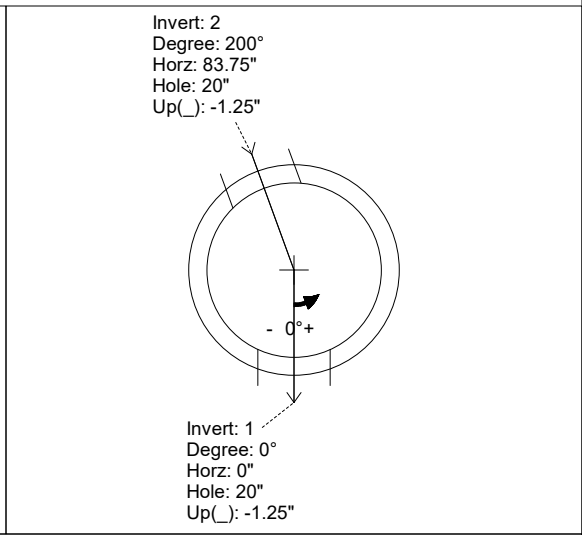
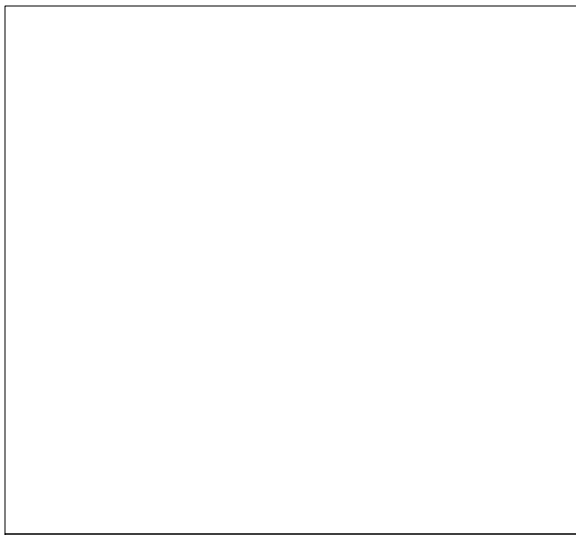
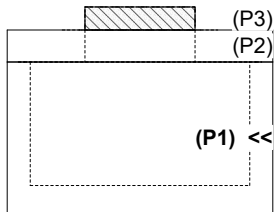
Structure Total: 4603 lb

Rim: 922.23'    Rim to Invert: 3.29'    Slack: 0.48"    Sump: 0"    Step Position:

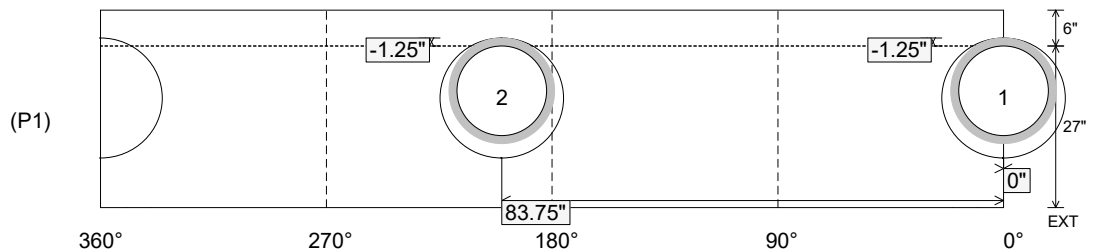
Position	Elev	Angle	Ext. (cw)	Pipe	Pipe OD	Connector	Hole	Horz Size	Up ( )	Offset
Invert 1	918.94'	0°	0"	15" HDPE	17.6"	Hole 20	20"	20.629"	-1.25"	0"
Invert 2	918.94'	200°	101.25"	15" HDPE	17.6"	Hole 20	20"	20.629", 6.431"	-1.25"	0"
Invert 3										
Invert 4										
Invert 5										
Invert 6										
Invert 7										
Invert 8										

RIGHT-SIDE UP VIEW (int. dimensions)

UPSIDE-DOWN VIEW (int. dimenions)



INSIDE WALL DIMENSIONS



Coating (Int): Coating (Ext):	Seam Up: Flat Seam Dn: n/a	Wall Thickness: 5" Floor Height: 6"	Height (Int): 27" Height (Ext): 33"	Weight (Net): 2925 lb Volume (Net): 0.75cu.yd
----------------------------------	-------------------------------	--	--	--