

Job Name: 25-3304 - Vuteq Warehouse Expansion  
 Job Location: Georgetown, KY  
 Contractor: Brown General Contractors

Plant: 100

3/19/2026 11:42:56 AM

Tech: Jared - A

PC: Erica Bradley



**Structure ID: ST-14**

**P3 MH060LD13**

**MH FLAT TOP w/ 24" ECC Hole F/G**

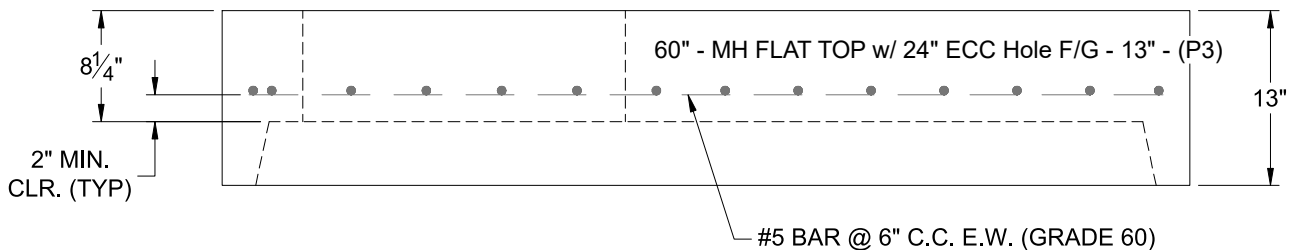
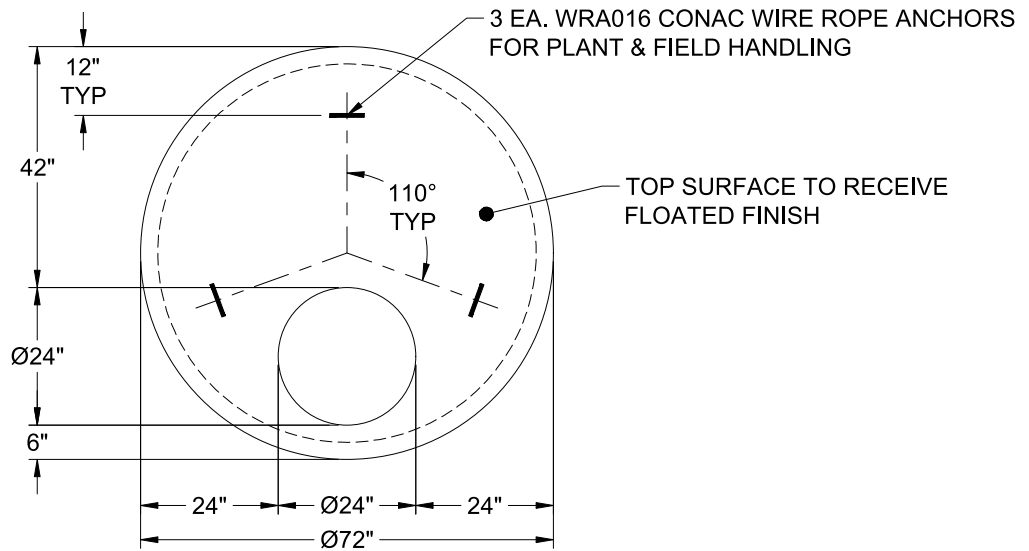
- P4) 24" - CASTING HEIGHT - 7"
- P3) 60" - MH FLAT TOP w/ 24" ECC Hole F/G - 13"
- P2) 60" - MH RISER T/G - 60"
- P1) 60" - MH BASE Custom Ht T/n - 37"
- 1) SECONDARY POUR - Weir Wall
- 1) CASTING - HOE MC-315 F/C Storm
- 2) 60" - Conseal CS-102 1.00"
- 1) Hole - 32
- 2) Hole - 18
- 1) Hole - 30
- 8) MH Step ML-10-TDS-NCR - 10"

0 lb  
 2869 lb  
 6264 lb  
 5520 lb  
 388 lb  
 258 lb  
 0 lb  
 0 lb  
 0 lb  
 0 lb  
 0 lb  
 \_\_\_\_\_  
 15299 lb

Structure Total:

Structure Notes:

1. PER ASTM C-478 SPECIFICATIONS
2. CONCRETE: 4,000 PSI AT 28 DAYS
3. REINFORCEMENT: #5 BAR @ 6" C.C. E.W. (GRADE 60) - 2" MIN. REBAR CLEARANCE (TYP)
4. HOE MC-315 FRAME & COVER "STORM" SUPPLIED BY ICAST
5. LIFTERS: 3 EA. WRA016 CONAC WIRE ROPE ANCHORS FOR PLANT & FIELD HANDLING
6. TOP SURFACE TO RECEIVE FLOATED FINISH



Coating (Int):  
 Coating (Ext):

Seam Up: Flat  
 Seam Dn: Groove

Wall Thickness: 6"

Height (Ext): 13"

Weight (Net): 2869 lb  
 Volume (Net): 0.73cu.yd