

Job Name: 25-3304 - Vuteq Warehouse Expansion  
 Job Location: Georgetown, KY  
 Contractor: Brown General Contractors

Plant: 100  
 3/19/2026 11:40:31 AM

Tech: Jared - A  
 PC: Erica Bradley



**Structure ID: ST-14**

**P1 MH060BAVF**

**MH BASE Custom Ht T/n**

- P4) 24" - CASTING HEIGHT - 7"
- P3) 60" - MH FLAT TOP w/ 24" ECC Hole F/G - 13"
- P2) 60" - MH RISER T/G - 60"
- P1) 60" - MH BASE Custom Ht T/n - 37"
- 1) SECONDARY POUR - Weir Wall
- 1) CASTING - HOE MC-315 F/C Storm
- 2) 60" - Conseal CS-102 1.00"
- 1) Hole - 32
- 2) Hole - 18
- 1) Hole - 30
- 8) MH Step ML-10-TDS-NCR - 10"

0 lb  
 2869 lb  
 6264 lb  
 5520 lb  
 388 lb  
 258 lb  
 0 lb  
 0 lb  
 0 lb  
 0 lb  
 0 lb  
 0 lb  
 \_\_\_\_\_  
 Structure Total: 15299 lb

- Structure Notes:
1. PER ASTM C-478 SPECIFICATIONS
  2. CONCRETE: 4,000 PSI AT 28 DAYS
  3. REINFORCEMENT: PER ASTM A615
  4. NO STORM INVERT
  5. STEPS AT 185 DEGREES
  6. HOE MC-315 FRAME & COVER "STORM" SUPPLIED BY ICAST
  7. THIS STRUCTURE CONTAINS A WEIR WALL - SEE WEIR WALL DRAWING (PG. 2 OF 2) FOR DETAILS
  8. INVERTS 2 & 3 OFFSET 12" FROM CENTER (24" CENTER-TO-CENTER)

**BASE POUR (PG. 1 OF 1): 5,520 LBS**

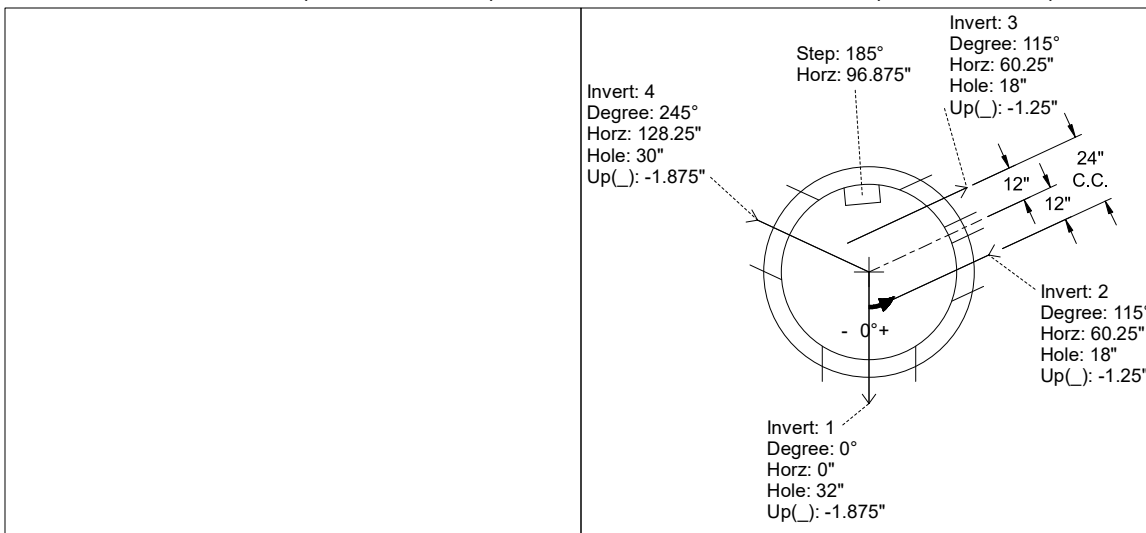
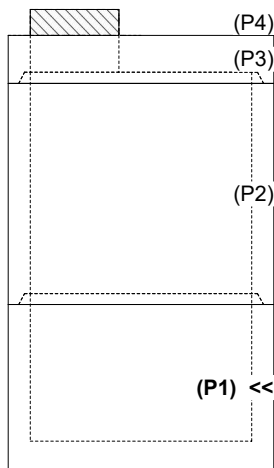
**WEIR WALL POUR (PG. 2 OF 2): 388 LBS**

Rim: 923.81' Rim to Invert: 9.83' Slack: 0.96" Sump: 0" Step Position: 185°

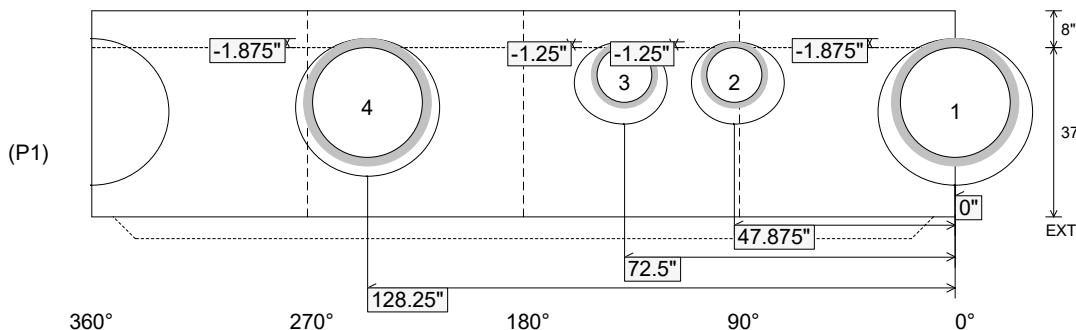
| Position | Elev    | Angle | Ext. (cw) | Pipe     | Pipe OD | Connector | Hole | Horz Size | Up ( )  | Offset |
|----------|---------|-------|-----------|----------|---------|-----------|------|-----------|---------|--------|
| Invert 1 | 913.98' | 0°    | 0"        | 24" HDPE | 27.8"   | Hole 32   | 32"  | 33.752"   | -1.875" | 0"     |
| Invert 2 | 913.98' | 115°  | 60"       | 12" HDPE | 14.5"   | Hole 18   | 18"  | 20.257"   | -1.25"  | -12"   |
| Invert 3 | 913.98' | 115°  | 84.5"     | 12" HDPE | 14.5"   | Hole 18   | 18"  | 20.257"   | -1.25"  | 12"    |
| Invert 4 | 913.98' | 245°  | 154"      | 24" HDPE | 27.8"   | Hole 30   | 30"  | 31.416"   | -1.875" | 0"     |
| Invert 5 |         |       |           |          |         |           |      |           |         |        |
| Invert 6 |         |       |           |          |         |           |      |           |         |        |
| Invert 7 |         |       |           |          |         |           |      |           |         |        |
| Invert 8 |         |       |           |          |         |           |      |           |         |        |

RIGHT-SIDE UP VIEW (int. dimensions)

UPSIDE-DOWN VIEW (int. dimensions)



INSIDE WALL DIMENSIONS



Coating (Int):  
 Coating (Ext):

Seam Up: Tongue  
 Seam Dn: n/a

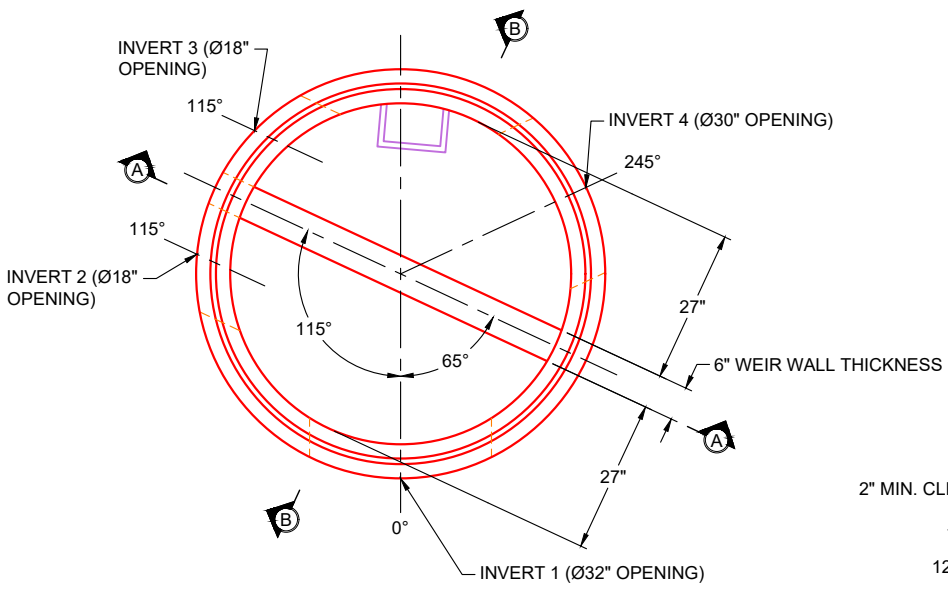
Wall Thickness: 6"  
 Floor Height: 8"

Height (Int): 37"  
 Height (Ext): 45"

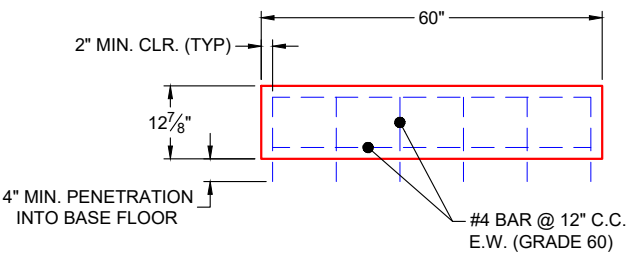
Weight (Net): 5520 lb  
 Volume (Net): 1.41cu.yd

**GENERAL NOTES:**

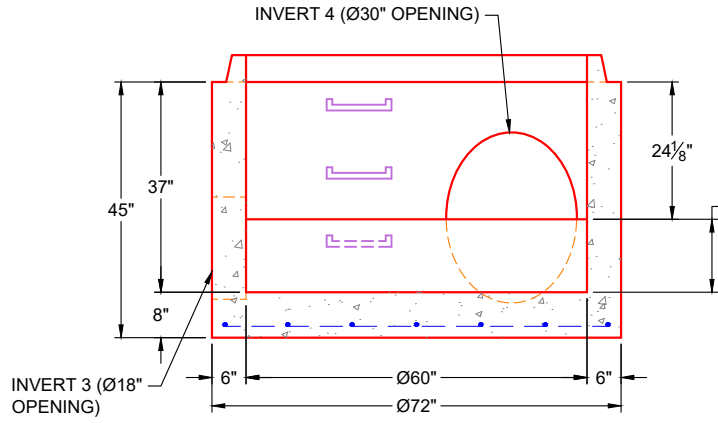
1. PER ASTM C-478 SPECIFICATIONS
2. CONCRETE: 4,000 PSI AT 28 DAYS
3. REINFORCEMENT: DRILL & DOWEL #4 BAR @ 12" C.C. E.W. (GRADE 60) INTO BASE FLOOR FOR WEIR WALL POUR TIE-IN - 2" MIN. REBAR CLEARANCE (TYP) & MIN. 4" PENETRATION INTO BASE FLOOR
4. WEIGHT: 388 LBS (5,908 LBS BASE & WEIR WALL TOTAL)
5. SEE STACK-IT DRAWING FOR "ST-14" (PG. 1 OF 2) FOR ADDITIONAL DETAILS



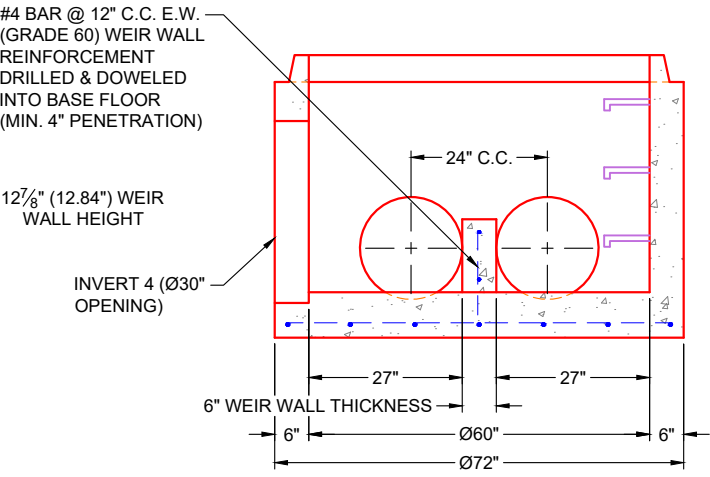
**PLAN VIEW  
(RIGHT SIDE UP)**




**WEIR WALL REINFORCEMENT  
(RIGHT SIDE UP)**



**SECTION A-A**



**SECTION B-B**

|  |  |  |  |
|--|--|--|--|
| <b>PRODUCTION WORK ORDER</b>   |  | PRODUCT I.D.:<br>WEIR                        | DESCRIPTION:<br>Ø60" X 12.84" X 6" WEIR WALL |
|  | QUALITY CONTROL CHECKLIST                                | PRODUCT VIEW: RIGHT SIDE UP                  | CUSTOMER: BROWN GENERAL CONTRACTORS          |
|  | <input type="checkbox"/> ALL DIMENSIONS CORRECT.         | PLANT: BEAVER DAM, KY                        | PROJECT: VUTEQ WAREHOUSE EXPANSION           |
|  | <input type="checkbox"/> LIFTERS INSTALLED.              | WEIGHT: 388 LBS (5908 LBS BASE & WEIR TOTAL) | STRUCTURE: ST-14                             |
|  | <input type="checkbox"/> HOLE LOCATION(S) CORRECT.       | TOP SECTION JOINT: N / A                     | QUOTE / SALES ORDER NO: 25-3304              |
|  | <input type="checkbox"/> REINFORCING CORRECT.            | BASE SECTION JOINT: N / A                    | PE: J.H. ROSS                                |
|  | <input type="checkbox"/> CASTING LOCATION & ORIENTATION. | QC CHECK INITIALS:                           | DRAWN BY: K. CARDWELL                        |
| <input type="checkbox"/> EDGES CHAMFERED.  |  | DATE: 03/19/26                               | SCALE: NTS                                   |
| <input type="checkbox"/> ALL PATCHWORK ACCEPTABLE.                                 |  |  | PG. 2 OF 2                                   |