

Job Name: 25-3304 - Vuteq Warehouse Expansion  
 Job Location: Georgetown, KY  
 Contractor: Brown General Contractors

Plant: 100

3/19/2026 11:43:02 AM

Tech: Jared - A

PC: Erica Bradley



**Structure ID: ST-13**

**P4 MH048LD07ECC**

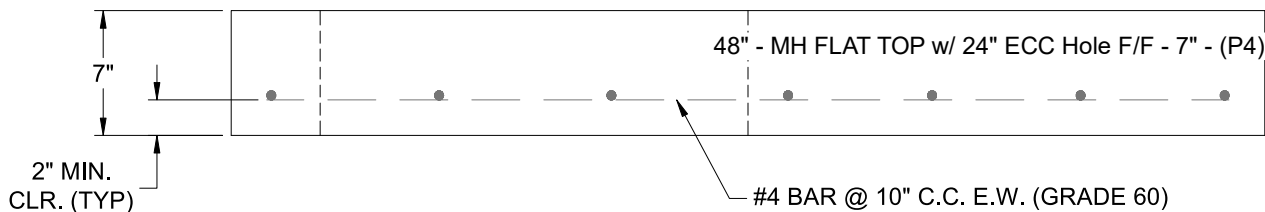
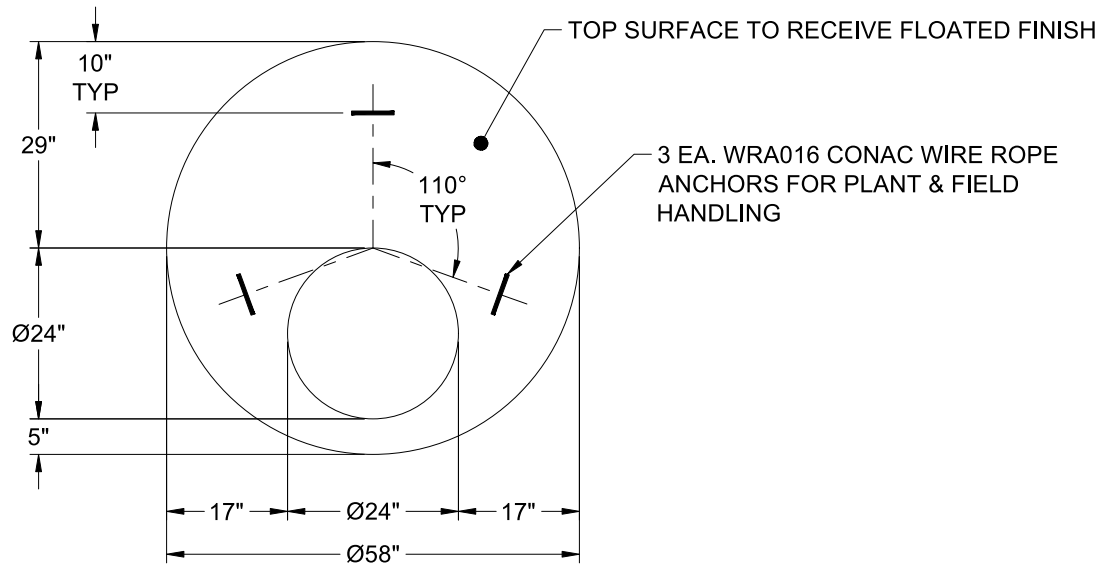
**MH FLAT TOP w/ 24" ECC Hole F/F**

- P5) 24" - CASTING HEIGHT - 7"
- P4) 48" - MH FLAT TOP w/ 24" ECC Hole F/F - 7"
- P3) 48" - MH RISER SPECIAL F/G - 48"
- P2) 48" - MH RISER T/G - 72"
- P1) 48" - MH BASE T/n - 60"
- 1) CASTING - HOE MC-315 F/C Storm
- 3) 48" - Conseal CS-102 1.00"
- 1) Hole - 34
- 1) Hole - 30
- 15) MH Step ML-10-TDS-NCR - 10"

0 lb  
 1286 lb  
 3037 lb  
 5030 lb  
 5107 lb  
 258 lb  
 0 lb  
 0 lb  
 0 lb  
 0 lb  
 Structure Total: 14718 lb

Structure Notes:

1. PER ASTM C-478 SPECIFICATIONS
2. CONCRETE: 4,000 PSI AT 28 DAYS
3. REINFORCEMENT: #4 BAR @ 10" C.C. E.W. (GRADE 60) - 2" MIN. REBAR CLEARANCE (TYP)
4. HOE MC-315 FRAME & COVER "STORM" SUPPLIED BY ICAST
5. LIFTERS: 3 EA. WRA016 CONAC WIRE ROPE ANCHORS FOR PLANT & FIELD HANDLING
6. TOP SURFACE TO RECEIVE FLOATED FINISH



Coating (Int):  
 Coating (Ext):

Seam Up: Flat  
 Seam Dn: Flat

Wall Thickness: 5"

Height (Ext): 7"

Weight (Net): 1286 lb  
 Volume (Net): 0.33cu.yd